

CG 34-31-65 + RD 1



**DUAL INDUCTION
LATEROLOG**

1" = 100'

COMPANY: NATIUNA & WYOMING ENERGY COMPANY
 WELL: BICESTON 43-31-65 (RD 1)
 FIELD: MISSI
 COUNTY: COLUMBIA STATE: OREGON
 API No: 36-009-00284
 Location: 2047.19' W 255' & 661.60' N NORTH
 OF THE SOUTHEAST CORNER OF:
 CHU/KSN/AR
 P133

Permanent Datum: 81
 Log Measured From: K3
 Drilling Measured From: K3
 Sec: 31 Twp: 6N Rge: 5W
 Elev. KB: 736.14'
 Elev. D.F.: 735.14'

Date	8-22-91		
Run No.	ONE		
Depth-Driller	1902' MD	1811' TWD	
Depth-Logger	1894' MD	1809' TWD	
Bitm Log Inter.	1892' MD	1809' TWD	
Top Log Inter.	CASING		
Casing-Driller	8.63 @ 502'	MD @	@
Casing-Logger	5.03' MD	5.03' TWD	
Bit Size	7.87"		
Type Fluid in Hole	GEL-FOAMER		
Dens. 1 Visc.	10.1 @ 49		
pH Fluid Loss	10.0 @ 5.6 ml		
Source of Sample	F1 (Q-M) LHM		
R _w @ Meas Temp	1.8 @ 68 °F	@	@
R _w @ Meas Temp	2.0 @ 66 °F	@	@
R _w @ Meas Temp	1.6 @ 66 °F	@	@
Source R _w	MWAS 1 MWAS		
R _w @ BHT	1.5 @ 85 °F	@	@
Time Since Circ	3.25 HOURS		
Time On Bottom	20:22		
Max Rec Temp	85 °F @	@	@
Equip. Location	7674 I BK17		
Recorded By	D. LKZAS		
Witnessed By	J. VANKEREN	D. HICKINGS	B. PINOITTI

Part Number 26000

Service Ticket No.: L68247 API Serial No.: PGM Version:

Change in Mud Type or Additional Samples		RESISTIVITY/RWA SCALE CHANGES			COMPUTED FROM	
Date	Sample No.	Type Log	Depth	Scale Up Hole	Scale Down Hole	a m
Depth-Driller						
Type Fluid in Hole						
Dens.	Visc					
pH	Fluid Loss					
RESISTIVITY EQUIPMENT DATA						
Source of Sample						
R _w @ Meas Temp	@ °F	@ °F	Run No.	Tool Type and No.	Pad Type	Tool Position
R _w @ Meas Temp	@ °F	@ °F	ONE	DII, #G-5512		S.O.
R _w @ Meas Temp	@ °F	@ °F				CAL #G-903
Source R _w						
R _w @ BHT	@ °F	@ °F				
R _w @ BHT	@ °F	@ °F				
Borehole Corrections						
R _w @ BHT	@ °F	@ °F	shallow	medium	deep	

GAMMA		ACOUSTIC		DENSITY		NEUTRON	
Run No.	ONE	Run No.	ONE	Run No.		Run No.	
Serial No.	G-3231	Serial No.	G-313	Serial No.		Serial No.	
Model No.	HA	Model No.	BA	Model No.		Model No.	
Diameter	3.38"	No. of Cent.	TWO	Diameter		Diameter	
Detector Model No.	NA	Spacing	TOP	Log Type		Log Type	
Type	SCINT		BOTTOM	Source Type		Source Type	
Length	4.5'	LSA	<input type="checkbox"/> Yes <input type="checkbox"/> No	Serial No.		Serial No.	
Distance to Source	NA	FWDA	<input type="checkbox"/> Yes <input type="checkbox"/> No	Strength		Strength	

LOGGING DATA											
GENERAL		GAMMA		ACOUSTIC		DENSITY		NEUTRON			
Run No.	ONE	Scale	L	R	Scale	L	R	Matrix	Scale	L	R
Depths	From To	Speed	0	150	175	275	55.6				
	CSG	45									

REMARKS: TAYLOR DRILLING

CASED HOLE PARAMETERS

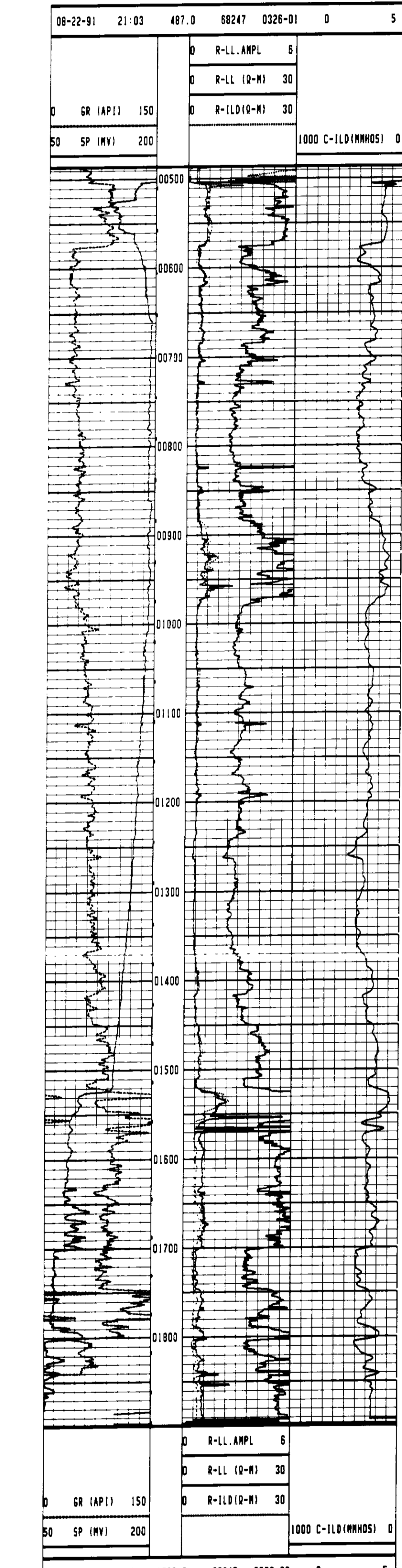
From: To:

Bit Size:

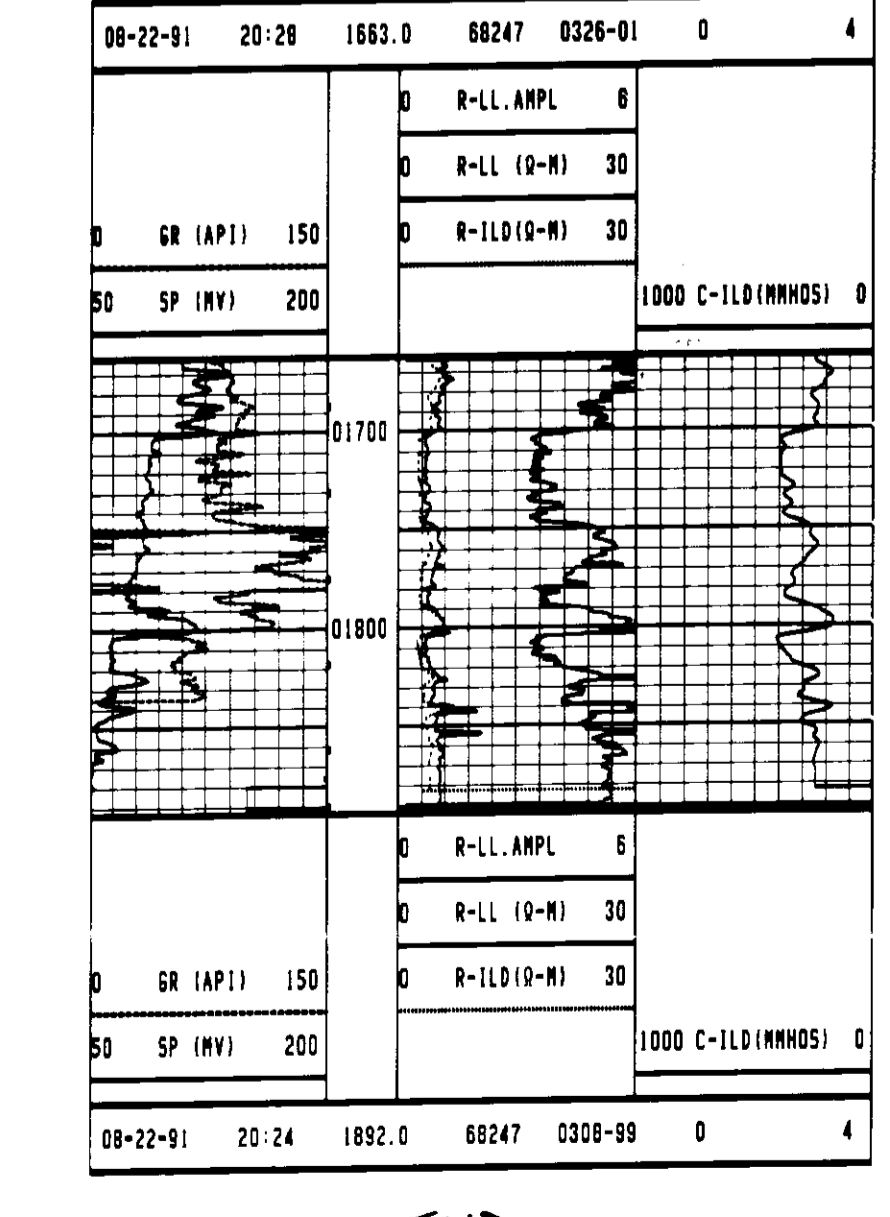
Csg. O.D.:

Csg. Wt.:

Halliburton Logging Services, Inc. does not guarantee the accuracy of any interpretation of log data, conversion of log data to physical rock parameters, or recommendations which may be given by Halliburton Logging Services, Inc. personnel or which may appear on the log or in any other form. Any user of such data, interpretations, conversions or recommendations agrees that Halliburton Logging Services, Inc. is not responsible, except where due to gross negligence or willful misconduct, for any loss, damages, or expenses resulting from the use thereof.



REPEAT SECTION



-END-