

**HALLIBURTON**  
LOGGING SERVICES, INC.

**DUAL INDUCTION  
LATEROLOG  
COMPENSATED SONIC  
LOG**

2" = 100'

**COMPANY** WASHINGTON & WISCONSIN ENERGY COMPANY  
**WELL** BRIDGEMONT 3-M-11-65  
**FIELD** MISSI  
**COUNTY** COJAHIBELA  
**STATE** OKLAHOMA  
**AP# No.** 36-009-00284  
**Location** 2072.19' W 3523' & 661.60' N 03111  
 OF THE SCOTTSBLISS CORNER OR:  
**Perm. Datum** G.L.  
**Log Measured from** S.L. R.L.  
**Logging Measured from** B.L. L.L. 21  
 D.L. 10' Ft Above Perm. Datum  
**Sec.** 31 **Twp.** 01N **Rge.** 19E  
**Elev. K.B.** 704.14' **Q.L.** 700.17'

**Run No.** 01E  
**Depth - Logger** 2072.2  
**Top Log Meter** 2072.0  
**Log Log Meter** 03111  
**Change - Logger** 03111  
**Bit Size** 7.875"  
**Type Fluid in Hole** GEL-FORMER  
**Dens. 1.196**  
**PH Fluid Loss** 9.8 - 1.47  
**Source of Sample** FIDUCIAL  
**R<sub>w</sub> @ Meas. Temp.** 3.0 @ 76 °F  
**R<sub>w</sub> @ Meas. Temp.** 2.8 @ 72 °F  
**R<sub>w</sub> @ Meas. Temp.** 3.3 @ 72 °F  
**Source R<sub>w</sub> R<sub>w</sub>** MEANS 1.0/0.5  
**R<sub>w</sub> @ BHT** 2.4 @ 98 °F  
**Time Since Circ.** 1.4:09  
**Max. Rec. Temp.** 98 °F  
**Equip. 1 Location** 7/7/11 BKRD  
**Recorded by** J. VALICIAN  
**Witnessed by** D. HICKSTINS

Part Number 26000

Service Ticket No.: \_\_\_\_\_ API Serial No.: \_\_\_\_\_ PGM Version: \_\_\_\_\_

Change in Mud Type or Additional Samples: \_\_\_\_\_ RESISTIVITY/RWA SCALE CHANGES: \_\_\_\_\_ COMPUTED FROM: \_\_\_\_\_

Date / Sample No.	Type Log	Depth	Scale Up Hole	Scale Down Hole	a	m
Depth - Driller						
Depth - Hole						

Dens. / Visc. \_\_\_\_\_

ph / Fluid Loss \_\_\_\_\_

Source of Sample \_\_\_\_\_

R<sub>w</sub> @ Meas. Temp. \_\_\_\_\_ °F

R<sub>w</sub> @ Meas. Temp. \_\_\_\_\_ °F

R<sub>w</sub> @ Meas. Temp. \_\_\_\_\_ °F

Source R<sub>w</sub> / R<sub>w</sub> \_\_\_\_\_

R<sub>w</sub> @ BHT \_\_\_\_\_ °F

R<sub>w</sub> @ BHT \_\_\_\_\_ °F

R<sub>w</sub> @ BHT \_\_\_\_\_ °F

Borehole Corrections: \_\_\_\_\_ shallow medium deep

**EQUIPMENT DATA**

GAMMA		ACOUSTIC		DENSITY		NEUTRON	
Run No.	01E	Run No.	01E	Run No.		Run No.	
Serial No.	G-3231	Serial No.	G-3037	Serial No.		Serial No.	
Model No.	HA	Model No.	BA	Model No.		Model No.	
Diameter	3.38"	No. of Cent.	TWO	Diameter		Diameter	
Detector Model No.	NA	Spacing	TOP	Log Type		Log Type	
Type	SCINT	LSA	TOP/TOP	Source Type		Source Type	
Length	4.5'	FWDA	<input type="checkbox"/> Yes <input type="checkbox"/> No	Serial No.		Serial No.	
Distance to Source	NA		<input type="checkbox"/> Yes <input type="checkbox"/> No	Strength		Strength	

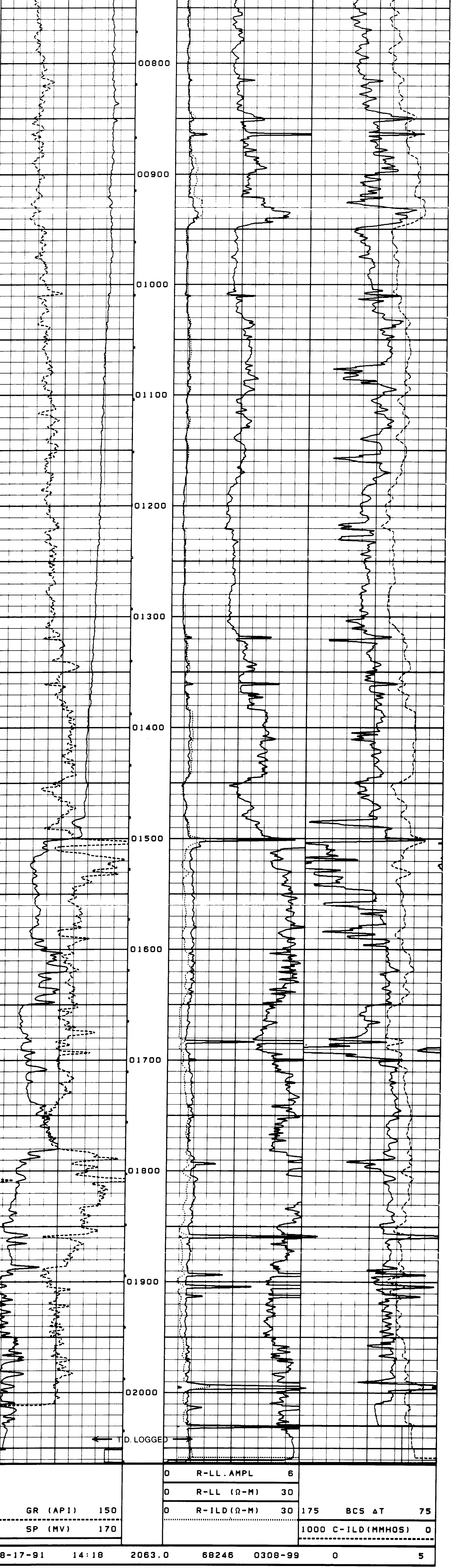
**LOGGING DATA**

Run No.	GENERAL		GAMMA		ACOUSTIC		DENSITY		NEUTRON			
	From	To	Speed Ft/Min	L	R	L	R	Scale	Matrix	L	R	Matrix
01E	TD	CSG	45	0	150	175	275	55.6				

REMARKS: TAYLOR DRILLING

Wellbore Parameters: From \_\_\_\_\_ To \_\_\_\_\_  
 Bit Size \_\_\_\_\_  
 Csg O.D. \_\_\_\_\_  
 Csg WT \_\_\_\_\_

Halliburton Logging Services, Inc. does not guarantee the accuracy of any interpretation of log data, conversion of log data to physical rock parameters, or recommendations which may be given by Halliburton Logging Services, Inc. personnel or which may appear on the log or in any other form. Any user of such data, interpretations, conversions or recommendations agrees that Halliburton Logging Services, Inc. is not responsible, except where due to gross negligence or willful misconduct, for any loss, damages, or expenses resulting from the use thereof.



**REPEAT SECTION**

