

0241-02-65 + RD1



COMPANY: REICHOLD ENERGY CORPORATION
 WELL: COLUMBIA 41-2 REDRILL NO. 1
 FIELD: MIST
 COUNTY: COLUMBIA STATE: OREGON
 Location: 1218' SOUTH AND 482' WEST OF THE NORTHEAST CORNER
 Other Services: DIP

Permanent Datum: G.L. 1182.5 Elev.: K.G. 1193.9
 Log Measured From: K.B. 0R 11.4 Ft. Above Perm. Datum
 Drilling Measured From: K.B. Elev.: 1182.5
 D.F. G.L. 1182.5

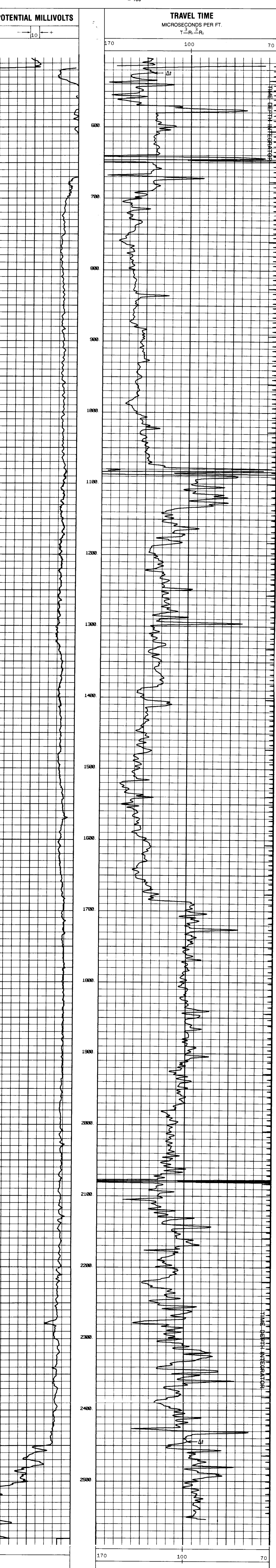
Date	2-16-82
Run No.	TW
Depth—Driller	3040
Depth—Welex	NOT LOGGED
Run Log/Driller	2655
Log Log/Driller	518
Casing—Driller	7 @ 518
Casing—Welex	518 @ 518
BM Size	6 1/4
Type Fluid in Hole	GE LCM
Dens. Visc.	6.6 @ 48
pH Fluid Loss	11.0 @ 12 ml
Source of Sample	CIRCULATED
R _m @ Meas. Temp.	2.6 @ 59 °F
R _{nc} @ Meas. Temp.	2.8 @ 59 °F
R _{nc} @ Meas. Temp.	2.9 @ 59 °F
Source R _m R _{nc}	MEASURED
R _m @ BHT	1.35 @ 115 °F
R _{nc} @ BHT	1.35 @ 115 °F
Time Since Circ.	2 HOURS
Max. Pac. Temp.	115 °F @ BHT
Equip. Location	28981 WOODLAND CENTER WISLART
Recorded By	ATCER
Witnessed By	

Service Ticket No. 116026 Remarks:

Change in Mud Type or Additional Samples		SCALE CHANGES		
Date Sample No.	Type Log	Depth	Scale Up Hole	Scale Down Hole
Type Fluid in Hole				
Dens. Visc.	ph Fluid Loss	EQUIPMENT DATA		
Source of Sample		Run No.	Tool Type and No.	Pad Type Tool Position Other
R _m @ Meas. Temp.	@ °F	DNE	AVL 29270	
R _{nc} @ Meas. Temp.	@ °F			
Source: R _m R _{nc}				
R _m @ BHT	1.53 @ 115 °F			
R _{nc} @ BHT	1.46 @ 115 °F			
R _{nc} @ BHT	1.56 @ 115 °F			

DRAFTED BY: B. CASTRO

Welex does not guarantee the accuracy of any interpretation of log data, conversion of log data to physical rock parameters, or recommendations which may be given by Welex personnel or which may appear on the log or in any other form. Any user of such data, interpretations, conversions, or recommendations agrees that Welex is not responsible, except where due to gross negligence or willful misconduct, for any loss, damages, or expenses resulting from the use thereof.



REICHOLD ENERGY CORPORATION COLUMBIA 41-2 REDRILL NO. 1 MIST COLUMBIA COUNTY, OREGON	T.D. LOGGED 2655 T.D. DRILLER 3040 T.D. WELEX NOT LOGGED ELEV. G.L. 1182.5 KB. 1193.9
---	--

