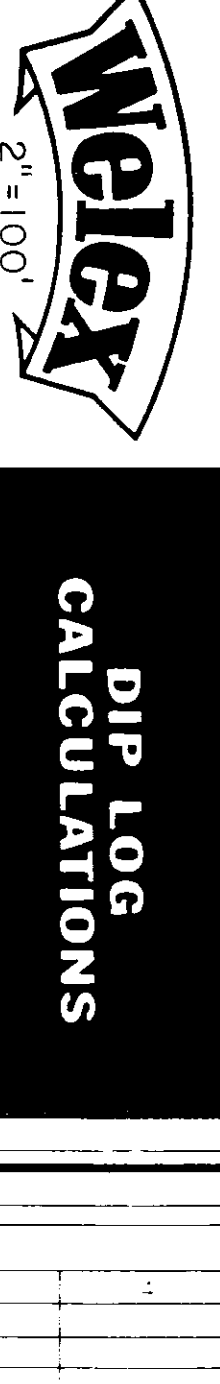


CE 41-02-65 & RD 1



DIP LOG CALCULATIONS

COMPANY REICHHOLD ENERGY CORPORATION
 WELL COLUMBIA COUNTY 41-2 REDRILL NO. 1
 FIELD MIST
 COUNTY COLUMBIA STATE OREGON

Permanent Datum: G.L., OR Elev 1182.5
 Log Measured From: K.B., 0R Elev 1182.5
 Drilling Measured From: D.I., Elev 1182.5
 Location: 1218' SOUTH AND 482' WEST OF THE NORTHEAST CORNER OF: D.I.C. C/AVL
 Section: 1 Township 6N Range 5N

Date: 2-16-82
 Run No: TW0
 Depth - Diller: 3040
 Depth - Wilcox: 3030
 Borehole Interval: 3000
 100' Log Interval: 550 @ 518
 Casting - Diller: 7 @ 518
 Casting - Wilcox: NOT LOGGED
 Bit Size: 8 1/4 INCH
 Type Fluid in Hole: 66.6 @ 1.48 ml
 Density: 11.0 @ 112 ml
 Circulated Sample: CIRCULATED
 Run @ Mass Temp: 2.6 @ 59 F
 Run @ Mass Temp: 2.85 @ 59 F
 Run @ Mass Temp: 2.90 @ 62 F
 Source Fluid Rate: MEASURED
 Time Since Circ: 1.3 @ 115 F
 Max. Rec. Temp: 2 HOURS
 Equip. Location: 115' F @ BHT
 Recorder: 289C, M00DL AND CONNER-VI-SHART
 Witnessed By: ALGER

COMPANY	REICHHOLD ENERGY CORPORATION
WELL	COLUMBIA COUNTY 41-2 REDRILL NO. 1
FIELD	MIST
COUNTY	COLUMBIA STATE OREGON
Date	2-16-82
Run No	TW0
Depth - Diller	3040
Depth - Wilcox	3030
Borehole Interval	3000
100' Log Interval	550 @ 518
Casting - Diller	7 @ 518
Casting - Wilcox	NOT LOGGED
Bit Size	8 1/4 INCH
Type Fluid in Hole	66.6 @ 1.48 ml
Density	11.0 @ 112 ml
Circulated Sample	CIRCULATED
Run @ Mass Temp	2.6 @ 59 F
Run @ Mass Temp	2.85 @ 59 F
Run @ Mass Temp	2.90 @ 62 F
Source Fluid Rate	MEASURED
Time Since Circ	1.3 @ 115 F
Max. Rec. Temp	2 HOURS
Equip. Location	115' F @ BHT
Recorder	289C, M00DL AND CONNER-VI-SHART
Witnessed By	ALGER

Service Ticket No	1106026		
Change in Mud Type or Additions			
Date	Sample No.	Run No.	DIP
Depth - Diller		Tool Type	81096
Type Fluid in Hole		Tool Number	N/A
		Conn. By	N/A
		Computed By	N/A
		Remarks	INS. 98856
			MAN. 90126
			TRANS. 81096
			DRAFTED BY: B. CASTRO

We express no guarantee as to the accuracy of any interpretation of log data, conversion of log data to physical measurements, or recommendations concerning the use of this log. We do not warrant the accuracy of any data or interpretation of data. We are not responsible for any loss or damage to equipment or other property that may result from the use of this log, or for any injury to persons or property that may result from the use of this log.

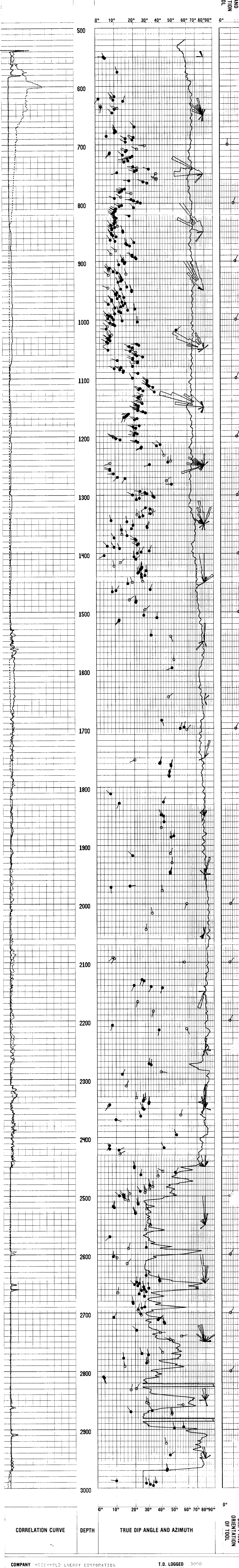
Magnetic Declination NORTH 22.5 EAST

TABLE OF CONSTANTS FOR DETERMINING VERTICAL DIFFERENCE AT VARIOUS DIP ANGLES

DIP ANGLES Degrees	CONSTANT	DIP ANGLES Degrees	CONSTANT	DIP ANGLES Degrees	CONSTANT	DIP ANGLES Degrees	CONSTANT
1	0175	11	194	21	384	35	700
2	035	12	213	22	404	40	839
3	052	13	231	23	425	45	1000
4	070	14	249	24	445	50	1192
5	088	15	268	25	466	55	1428
6	105	16	287	26	487	60	1732
7	123	17	306	27	509	65	2144
8	141	18	325	28	531	70	2748
9	158	19	344	29	554	75	3732
10	176	20	364	30	577	80	5671

Vertical difference in feet is obtained by multiplying the constant for any given dip angle by the horizontal distance in feet.
 Example: Dip angle 10°. Horizontal distance 440 ft.
 Vertical difference = .176 x 440 = 77.44

GRAPHIC PRESENTATION



COMPANY	REICHHOLD ENERGY CORPORATION	T.D. LOGGED	3090
WELL	COLUMBIA COUNTY 41-2 REDRILL NO. 1	T.O. DRILLER	3040
FIELD	MIST	T.D. WELEX	3030
COUNTY	COLUMBIA STATE OREGON	ELEV: K.B.	1193.4
		D.F.	1162.5
		G.L.	

-end-