

02-41-02-105-2RD1

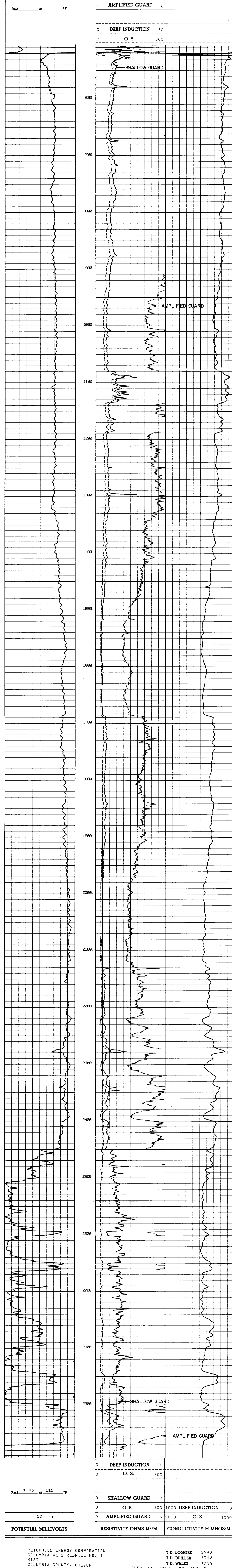


COMPANY REICHOLD ENERGY CORPORATION		COLUMBIA 41-2 REDRILL NO. 1	
WELL MIST		STATE OREGON	
FIELD MIST		COUNTY COLUMBIA	
Location 1218' SOUTH AND 482' WEST OF THE NORTHEAST CORNER OF:		City CLAVL	
Sec. 1 Twp. 6N Rge. 5W		Elev. K.B. 1193.9	
Permanent Datum G.L. OR 11.4		Elev. 1182.5	
Log Measured From K.B. 1193.9		Elev. 1182.5	
Drilling Measured From 2-16-82		D.L. 1182.5	
Date		Run No. 1	
Run No. 1		Tool Type and No. DIG 98854	
Depth - Other 3000		Pad Type	
Depth - Other 2998		Tool Position	
Dm. Log - Other 518 @ 518		Other	
Casing - Other 518 @ 518			
Case - Other 6 1/4			
Type Fluid in Hole GEL LCM			
Dens. Visc. 6.6 @ 115			
pH Fluid Loss 11.0 @ 115			
Source of Sample CIRCULATED			
R ₁ @ Meas. Temp. 2.6 @ 59			
R ₂ @ Meas. Temp. 2.8 @ 59			
R ₃ @ Meas. Temp. 2.9 @ 62			
Source R ₁ Meas. 1.3 @ 115			
F ₁ @ BHT 2.4 @ 115			
Time Since Circ. 2 @ 115			
Risk Rec. Temp. 2.0 @ 115			
Revised Location COLUMBIA 41-2 REDRILL NO. 1			
Revised By ALGER			

Service Ticket No. 16026 Remarks:

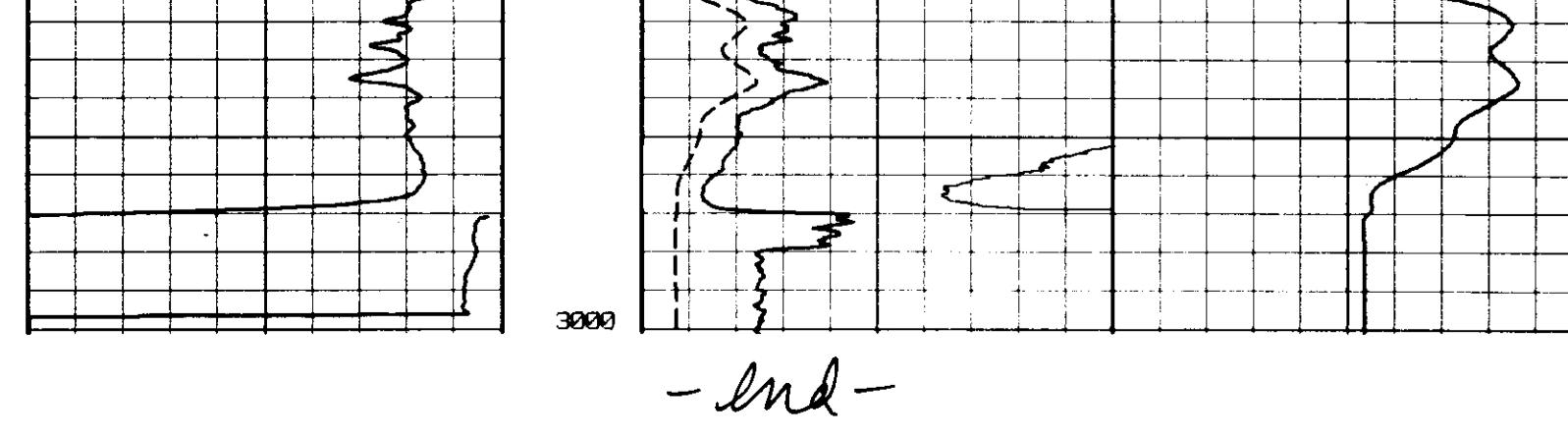
Change in Mud Type or Additional Samples		Type Log	Depth	SCALE CHANGES	
Date	Sample No.			Scale Up Hole	Scale Down Hole
Type Fluid in Hole					
Dens. Visc.					
pH Fluid Loss					
Source of Sample					
R ₁ @ Meas. Temp.					
R ₂ @ Meas. Temp.					
R ₃ @ Meas. Temp.					
Source R ₁ Meas.					
F ₁ @ BHT					
Time Since Circ.					
Risk Rec. Temp.					
Revised Location					
Revised By					

2" = 100'



REICHOLD ENERGY CORPORATION
 COLUMBIA 41-2 REDRILL NO. 1
 MIST
 COLUMBIA COUNTY, OREGON

T.D. LOGGED 2998
 T.D. DRILLER 3040
 T.D. WELEX 3000
 ELEV. GL. 1182.5 KB. 1193.9



- end -