

CL 41-02-65



# DIP LOG CALCULATIONS

COMPANY REICHOLD ENERGY CORPORATION  
 WELL COLUMBIA COUNTY 41-2  
 FIELD MIST  
 COUNTY COLUMBIA STATE OREGON  
 LOCATION 218.28 SOUTH AND 481.82 WEST OF THE NORTHEAST CORNER OF T. 6N. R. 8E. S. 16. GLOPHONI  
 DATE 2-7-82  
 PERMANENT DATUM C.L. OR 1.1-4 Ft. Above Fern Datum  
 LOG MEASURED FROM K.B. DI 1182.48  
 DRILLING MEASURED FROM K.B. DI 1182.48  
 RUN NO. 01E  
 DEPTH - WORKS 2875  
 DEPTH - DRILLER 2875  
 TOTAL LOG INTERVAL 58.2  
 CASING - DRILLER 7.5 @ 518  
 CASING - WORKS 5.8 @ 518  
 BIT SIZE 5.1/4  
 TYPES FLUID IN HOLE GEL-CM  
 DEPTH - 1 3.8 1.6-5  
 pH 10.5 110 ml  
 SOURCE OF SAMPLE CIRCULATED  
 R.M.T. @ MASS. TEMP. 9.0 @ 42 °F  
 R.M.C. @ MASS. TEMP. 6.0 @ 42 °F  
 SOURCE FLUID RISE 11.5 @ 42 °F  
 MAX. FIC TEMP. 3.6 @ 182.4  
 TEMP. SENS. CUR. 1.13 °F @ 181  
 EQUIP. LOCATION 2876 1 MOODLAND  
 RECORDED BY W. SHART  
 WITNESSED BY H. ALGER

Service Ticket No. 057029 Remarks: DRAINED BY:

Date	Sample No.	I	Run No.
			1
			2
			3
			4

Change in Mud Type or Additional Samples

Type Fluid in Hole

Dens. Visc.

pH Fluid Loss

Source of Sample

R.M.T. @ Mass. Temp.

R.M.C. @ Mass. Temp.

Source: Rmt | Rmc

R.m. @ BHT 3.35 @ 113 °F

R.mf @ BHT 3.35 @ 113 °F

R.mc @ BHT 2.23 @ 113 °F

R.M.C.

Welex does not guarantee the accuracy of any interpretation of log data, conversion of log data to physical rock parameters, or recommendations which may be given by Welex personnel or which may appear on the log or in any other form. Any user of such data, interpretations, conversions, or recommendations agrees that Welex is not responsible, except where due to gross negligence or willful misconduct, for any loss, damages, or expenses from the use thereof.

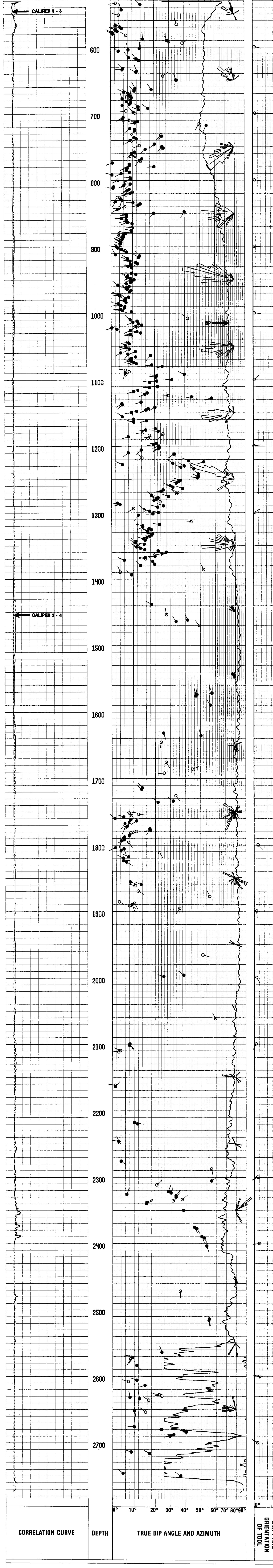
Magnetic Declination NORTH 22.5° EAST

## TABLE OF CONSTANTS FOR DETERMINING VERTICAL DIFFERENCE AT VARIOUS DIP ANGLES

DIP ANGLES Degrees	CONSTANT	DIP ANGLES Degrees	CONSTANT	DIP ANGLES Degrees	CONSTANT	DIP ANGLES Degrees	CONSTANT
1	.0175	11	.194	21	.384	35	.700
2	.035	12	.213	22	.404	40	.839
3	.052	13	.231	23	.425	45	1.000
4	.070	14	.249	24	.445	50	1.192
5	.088	15	.268	25	.466	55	1.428
6	.105	16	.287	26	.487	60	1.732
7	.123	17	.306	27	.509	65	2.144
8	.141	18	.325	28	.531	70	2.748
9	.158	19	.344	29	.554	75	3.732
10	.176	20	.364	30	.577	80	5.671

Vertical difference in feet is obtained by multiplying the constant for any given dip angle by the horizontal distance in feet.  
 Example: Dip angle 10°, Horizontal distance 440 ft.  
 Vertical difference = .176 x 440 = 77.44

## GRAPHIC PRESENTATION



COMPANY	REICHOLD ENERGY CORPORATION	T.D. LOGGED	2872
WELL	COLUMBIA COUNTY 41-2	T.D. DRILLER	2875
FIELD	MIST	T.D. WELEX	2876
COUNTY	COLUMBIA STATE CALIFORNIA	ELEV. K.B.	1193.88
		D.F.	
		G.L.	1182.48

