

CC 41-00-55

Schlumberger

2" NEUTRON-DENSITY

**CSU** Field Log

COMPANY: ARCO EXPLORATION AND TECHNOLOGY COMPANY  
 WELL: "COLUMBIA COUNTY" #41-6  
 FIELD: MIST GAS  
 COUNTY: COLUMBIA  
 STATE: OREGON  
 NATION: U.S.A.  
 LOCATION: S87D14NS45W 306.15' S2D45W  
 SEC: 6 SE 49.13' FR NE COR  
 TWP: 5N  
 RGE: 5W

PERMANENT DATUM: GL  
 ELEV. OF PERM. DATUM: 815.3 F  
 ELEVATIONS-  
 ELEV. MEASURED FROM: K81 822.3 F  
 K8 822.3 F  
 DFI 815.3 F  
 DRG. MEASURED FROM: K8  
 DFI 815.3 F

DATE: 22 JAN 86  
 RUN NO: 1

DEPTH-DRILLER: 2750.0 F  
 DEPTH-LOGGER: 2740.0 F  
 BTM. LOG INTERVAL: 2738.0 F  
 TOP LOG INTERVAL: 453.0 F  
 CASING-DRILLER: 454 F  
 CASING-LOGGER: 453 F  
 CASING: 9 5/8"  
 BIT SIZE: 8 3/4"  
 BIT DEPTH: 2750 F

OTHER SERVICES-  
 DIL-BHC  
 HOT  
 CST  
 VSP

PROGRAM  
 TAPE NO:  
 23.802  
 SERVICE  
 DRIVE NO:  
 4363117

RECEIVED - PTD  
 JAN 23 1986  
 Dept. of Geology  
 A Vertical Well Log

TYPE FLUID IN HOLE: GEL/POLYMER  
 DENSITY: 10.3 LB/G  
 VISCOSITY: 47.0 S  
 PH: 9.5  
 FLUID LOSS: 5.0 C3  
 SOURCE OF SAMPLE: FLOWLINE  
 RH: 2.870 DHMM AT 66.0 DEGF  
 RMF: 3.040 DHMM AT 42.0 DEGF  
 RMC: 3.340 DHMM AT 42.0 DEGF  
 SOURCE RMF/RMC: MEASURED/MEASURED  
 RM AT BHT: 1.790 DHMM AT 110. DEGF  
 RMF AT BHT: 1.273 DHMM AT 110. DEGF  
 RMC AT BHT: 1.398 DHMM AT 110. DEGF

TIME CIRC. STOPPED: 18:00 1-21  
 TIME LOGGER ON BTM.: 00:42 1-22

MAX. REC. TEMP: 110.0 DEGF

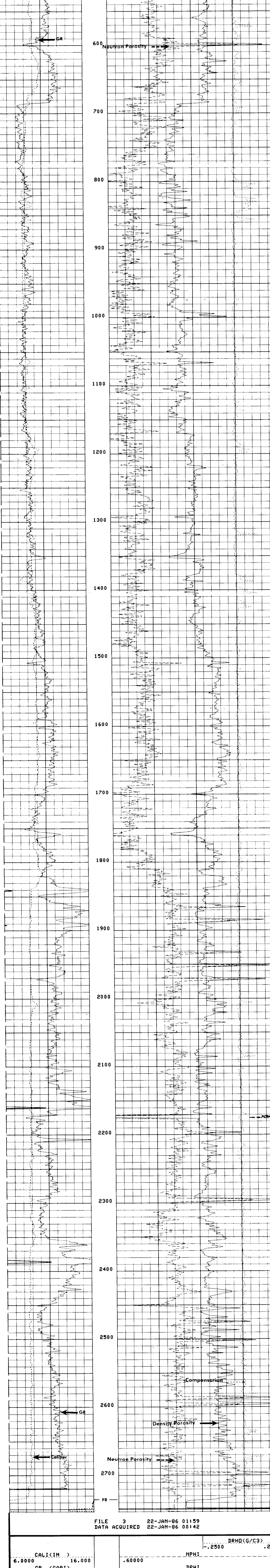
LOGGING UNIT NO: 8057  
 LOGGING UNIT LOC: SACRAMENTO  
 RECORDED BY: PILCH  
 WITNESSED BY: MCMURRY

REMARKS:  
 700PPM CHLORIDES.  
 58 DEGREES MAXIMUM DEVIATION.  
 LDT RUN BECAUSE OF PRE-JOB FDC FAILURE.

EQUIPMENT NUMBERS-  
 DRS-C 4775 NSC-D 1955 CNC-HA 1263 SGC-SA 561  
 CCSM-AB 17

ALL INTERPRETATIONS ARE OPINIONS BASED ON INFERENCES FROM ELECTRICAL OR OTHER MEASUREMENTS AND WE CANNOT, AND DO NOT GUARANTEE THE ACCURACY OR CORRECTNESS OF ANY INTERPRETATIONS, AND WE SHALL NOT, EXCEPT IN THE CASE OF GROSS OR WILLFUL NEGLIGENCE ON OUR PART, BE LIABLE OR RESPONSIBLE FOR ANY LOSS, COSTS, DAMAGES OR EXPENSES INCURRED OR SUSTAINED BY ANYONE RESULTING FROM ANY INTERPRETATION MADE BY ANY OF OUR OFFICERS, AGENTS OR EMPLOYEES. THESE INTERPRETATIONS ARE ALSO SUBJECT TO OUR GENERAL TERMS AND CONDITIONS AS SET OUT IN OUR CURRENT PRICE SCHEDULE.

CALI (IN)	DRHO (G/C3)
6.0000 16.0000	-.2500 .25000
GR (GAPI)	NPHI
0.0 150.00	.60000 0.0
	DPHI
	.60000 0.0



FILE 3 22-JAN-86 01:59  
 DATA ACQUIRED 22-JAN-86 01:42

CALI (IN)	DRHO (G/C3)
6.0000 16.0000	-.2500 .25000
GR (GAPI)	NPHI
0.0 150.00	.60000 0.0
	DPHI
	.60000 0.0

SENSOR MEASURE POINT TO TOOL ZERO

STSG 27.6 FEET	GR 32.2 FEET
NCNL 23.2 FEET	SCNL 23.2 FEET
SS2 2.0 FEET	FCNL 23.2 FEET
LITH 2.5 FEET	SS1 2.0 FEET
LU 2.5 FEET	LS 2.5 FEET
CALI 2.6 FEET	LL 2.5 FEET
NRAT 23.2 FEET	TENS -.9 FEET

PARAMETERS

NAME	VALUE	UNIT	NAME	VALUE	UNIT
BHT	95.0000	DEGF	TD	2735.00	F
PSNR	2.21200		SHT	80.0000	DEGF
MATR	SAND		FD	CALI	
MDEX	2.65000	G/C3	HC	1.00000	G/C3
LPCS	TWIN		HMUD	8.00000	LB/G
BHS	OPEN		DHC	BS	
DD	0.0	F	BS	8.75000	IN
PP	NDRM				

TAPE NOT MADE

-end-