

CO. TENNECO OIL CO. RUN #1 FIELD MIST OREGON WELLS 41-28
EFF DEPTH 2136' WELL START Static TOOL HUNG 1961'
CRISING 0 -2178' CRISING PRESS 400#/740# ON BOTTOM 12:32 9/28
LINER TUBING PRESS 400#/740# OFF BOTTOM 06:55 10/01
DATE 100185 ELEMENT RANGE 0 - 1889 ZERO POINT 11.8'
ELEVATION 100185 ZONE SHUT-IN
MAX TEMP 100.0 F PICK-UP None Made ON-PROD
PERF 2122 729.3 306.7 13.8 0:32 739.5 315.9 50.0
TUBING 2-3/8" 0 -1823' CXL SER NO. 304.8 14.2 6:55 739.5 315.9 66.4

CO. TENNECO OIL CO. RUN #1 FIELD MIST OREGON WELLS 41-28
EFF DEPTH 2136' WELL START Static TOOL HUNG 1961'
CRISING 0 -2178' CRISING PRESS 400#/740# ON BOTTOM 12:32 9/28
LINER TUBING PRESS 400#/740# OFF BOTTOM 06:55 10/01
DATE 100185 ELEMENT RANGE 0 - 1932 ZERO POINT 11.8'
ELEVATION 100185 ZONE SHUT-IN
MAX TEMP 100.0 F PICK-UP None Made ON-PROD
PERF 2122 729.3 306.7 13.8 0:32 739.5 315.9 50.0
TUBING 2-3/8" 0 -1823' CXL SER NO. 37538 14.2 6:55 739.5 315.9 66.4

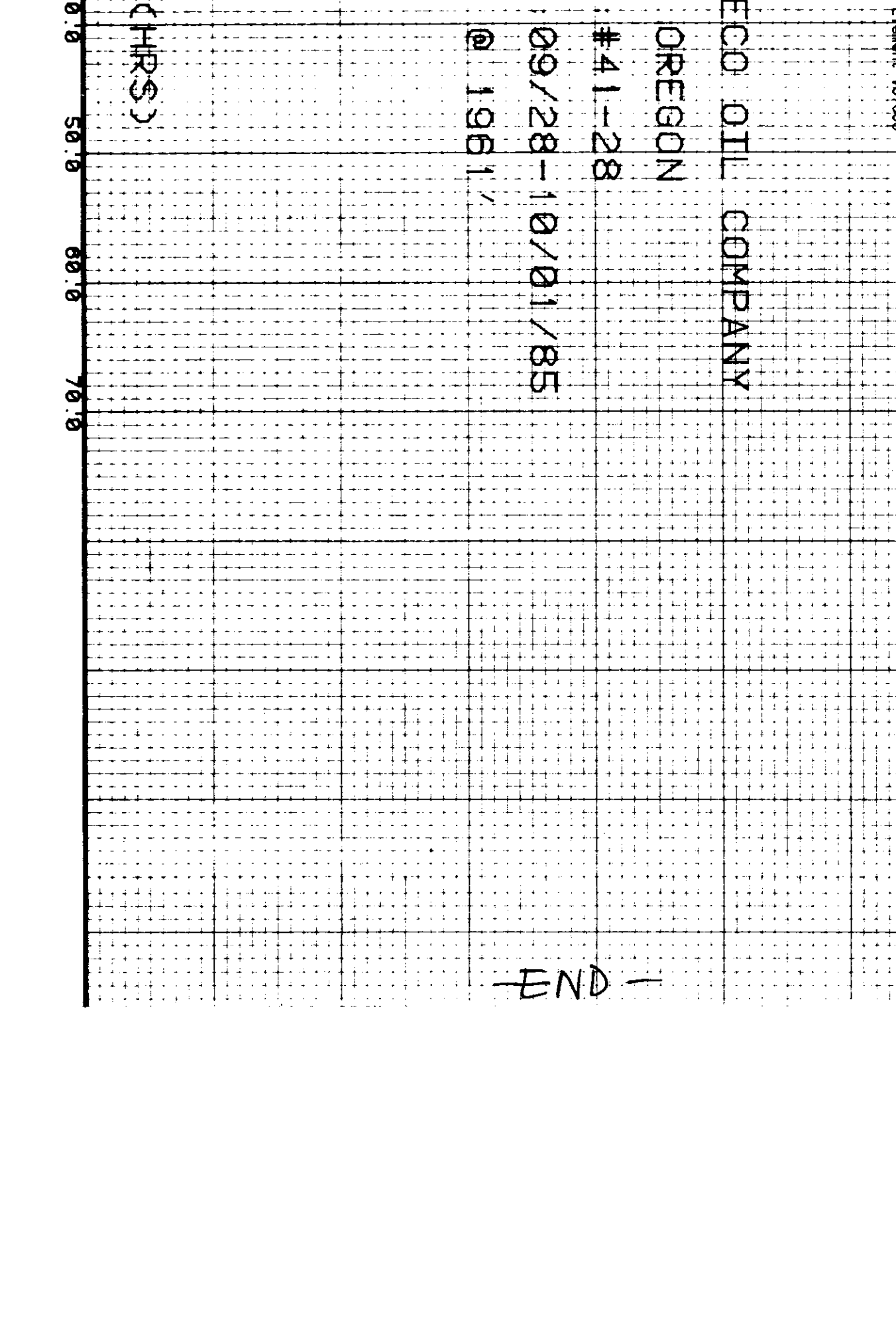
CO. TENNECO OIL CO. RUN #1 FIELD MIST OREGON WELLS 41-28
EFF DEPTH 2136' WELL START Static TOOL HUNG 1961'
CRISING 0 -2178' CRISING PRESS 400#/740# ON BOTTOM 12:32 9/28
LINER TUBING PRESS 400#/740# OFF BOTTOM 06:55 10/01
DATE 100185 ELEMENT RANGE 0 - 1932 ZERO POINT 11.8'
ELEVATION 100185 ZONE SHUT-IN
MAX TEMP 100.0 F PICK-UP None Made ON-PROD
PERF 2122 729.3 306.7 13.8 0:32 739.5 315.9 50.0
TUBING 2-3/8" 0 -1823' CXL SER NO. 37538 14.2 6:55 739.5 315.9 66.4

CO. TENNECO OIL CO. RUN #1 FIELD MIST OREGON WELLS 41-28
EFF DEPTH 2136' WELL START Static TOOL HUNG 1961'
CRISING 0 -2178' CRISING PRESS 400#/740# ON BOTTOM 12:32 9/28
LINER TUBING PRESS 400#/740# OFF BOTTOM 06:55 10/01
DATE 100185 ELEMENT RANGE 0 - 1932 ZERO POINT 11.8'
ELEVATION 100185 ZONE SHUT-IN
MAX TEMP 100.0 F PICK-UP None Made ON-PROD
PERF 2122 729.3 306.7 13.8 0:32 739.5 315.9 50.0
TUBING 2-3/8" 0 -1823' CXL SER NO. 37538 14.2 6:55 739.5 315.9 66.4

CO. TIME	P-T	DP-DT	DTIME	TIME	P-T	DP-DT	DTIME
12:32	423.6	0.0	0.0	14:42	722.2	298.6	2.2
12:39	426.6	72.0	1.1	14:47	724.1	300.5	2.2
12:49	613.9	190.3	3.3	14:50	721.3	297.7	2.3
12:55	674.5	250.9	4.4	14:55	726.0	302.4	2.4
13:03	711.4	287.8	5.5	14:59	721.3	297.7	2.5
13:10	753.1	329.5	6.6	15:05	725.1	301.5	2.5
13:13	742.7	319.1	7.7	15:17	728.0	304.4	2.7
13:16	724.7	301.1	7.7	15:19	736.5	312.9	2.8
13:19	698.2	274.6	8.8	15:22	744.1	320.5	2.8
13:23	727.6	304.0	9.9	15:32	751.7	328.1	3.0
13:30	742.7	319.1	11.0	15:47	751.7	328.1	3.2
13:32	733.3	309.7	11.0	15:53	749.9	326.3	3.5
13:33	729.5	305.9	11.0	15:58	748.0	324.4	3.8
13:37	742.8	319.2	11.1	16:10	746.2	322.6	4.2
13:40	743.7	320.1	11.1	17:15	746.3	322.7	4.7
13:43	736.2	312.6	11.2	17:55	746.5	322.9	5.4
13:45	738.5	306.9	11.2	18:12	746.5	322.9	5.7
13:51	735.2	311.6	11.3	18:18	694.1	260.5	5.8
14:00	742.8	319.2	11.5	18:29	698.4	274.8	5.9
14:05	739.1	315.5	11.5	18:39	712.6	289.0	6.1
14:10	736.3	312.7	11.6	19:05	715.6	292.0	6.6
14:14	727.2	313.6	11.7	19:31	718.4	294.8	7.0
14:21	724.9	301.3	11.7	20:01	720.4	296.8	7.5
14:21	732.5	300.9	11.8	20:29	720.5	296.9	7.9
14:26	730.6	307.0	11.9	20:59	720.6	297.0	8.4
14:31	729.5	300.9	12.0	21:11	721.6	298.0	8.6
14:32	729.7	306.1	12.0	21:17	728.3	304.7	8.7
14:35	721.2	297.6	12.0	21:41	728.3	304.7	9.1
14:37	716.5	292.9	12.1	22:12	728.5	304.9	9.7
14:38	725.0	301.4	12.1	22:50	728.6	305.0	10.3

CO. TIME	P-T	DP-DT	DTIME	TIME	P-T	DP-DT	DTIME
12:32	428.7	0.0	0.0	20:12	712.5	283.8	7.7
12:35	760.8	322.2	4.4	21:32	714.4	285.7	9.0
14:04	750.2	321.5	1.5	21:42	716.4	287.7	9.2
14:07	721.2	292.5	1.6	22:22	717.3	288.7	9.8
14:09	728.0	299.3	1.6	0:12	718.3	289.6	11.7
14:17	724.1	295.4	1.7	3:52	718.3	289.6	15.3
14:32	727.0	298.3	2.0	3:54	734.7	306.0	15.4
15:29	749.2	320.5	3.0	8:32	735.7	307.0	20.0
16:12	741.5	312.8	3.7	18:32	735.7	307.0	30.0
18:24	739.6	318.9	5.9	4:32	735.7	307.0	40.0
18:30	675.8	247.1	6.0	14:32	735.7	307.0	50.0
18:42	684.5	255.8	6.2	0:32	735.7	307.0	60.0
19:12	707.7	279.0	6.7	6:55	735.7	307.0	66.4
19:42	711.5	282.9	7.2	8:00	0.0	0.0	0.0

CO. TIME	P-T	DP-DT	DTIME	TIME	P-T	DP-DT	DTIME
12:32	428.7	0.0	0.0	20:12	712.5	283.8	7.7
12:35	760.8	322.2	4.4	21:32	714.4	285.7	9.0
14:04	750.2	321.5	1.5	21:42	716.4	287.7	9.2
14:07	721.2	292.5	1.6	22:22	717.3	288.7	9.8
14:09	728.0	299.3	1.6	0:12	718.3	289.6	11.7
14:17	724.1	295.4	1.7	3:52	718.3	289.6	15.3
14:32	727.0	298.3	2.0	3:54	734.7	306.0	15.4
15:29	749.2	320.5	3.0	8:32	735.7	307.0	20.0
16:12	741.5	312.8	3.7	18:32	735.7	307.0	30.0
18:24	739.6	318.9	5.9	4:32	735.7	307.0	40.0
18:30	675.8	247.1	6.0	14:32	735.7	307.0	50.0
18:42	684.5	255.8	6.2	0:32	735.7	307.0	60.0
19:12	707.7	279.0	6.7	6:55	735.7	307.0	66.4
19:42	711.5	282.9	7.2	8:00	0.0	0.0	0.0



DATE: 09/28-10/01/85
WELL: #41-28
MIST OREGON
TENNESCO OIL COMPANY
HUNG @ 1961'
END