

0242-08-64

Western Atlas International
 A Full Service Company
Compensated Neutron Gamma Ray Services

Compensated Denilog
 Gamma Ray

FILE NO. _____

API NO. _____

COMPANY ARC OIL & GAS COMPANY

WELL W-1

FIELD MINI

COUNTY COLLIERIA STATE OREGON

LOCATION 769 N. S. 11TH W. OIL THE S.E. CORNER OF

Other Services PHYSICIAN

SEC X TWP 3N RGE 1W

Permanent Datum GL Elev. 916'

Log Measured from NH Elev. 916'

Drilling Measured from NH Ft. Above Permanent Datum 0'

Date 6-28-88

Run No. 001

Service Order 158811

Depth-Driller 2237

Depth-Logger 2248

Bottom Logged Interval 1810'

Top Logged Interval 1810'

Casing-Driller 181' @ 1810'

Casing-Logger 181' @ 1810'

Bit Size 5 1/2"

Type Fluid in Hole LC MUD

Density and Viscosity 10.1 11

pH and Fluid Loss 8.3 1.1 cc

Source of Sample FLOWLINE

Rm @ Meas. Temp 321 @ 60 °F

Rm @ Meas. Temp 336 @ 70 °F

Rm @ Meas. Temp 110 @ 70 °F

Source of Rm and Rmc VI @ 108 °F

Rm @ BHT 186 @ 108 °F

Time Since Circ 1 HRS.

Max. Rec. Temp Deg. F. 108 °F

Equip. No. and Location 64100 SVC.

Recorded By W. WILSON

Witnessed By W. WILSON

FOLD HERE

In making interpretations of logs our employees will give Customer the benefit of their best judgment, but since all interpretations are opinions based on inferences from electrical or other measurements, we cannot and we do not guarantee the accuracy or the correctness of any interpretation. We shall not be liable or responsible for any loss, cost, damages, or expenses whatsoever incurred or sustained by the Customer resulting from any interpretation made by any of our employees.

Remarks

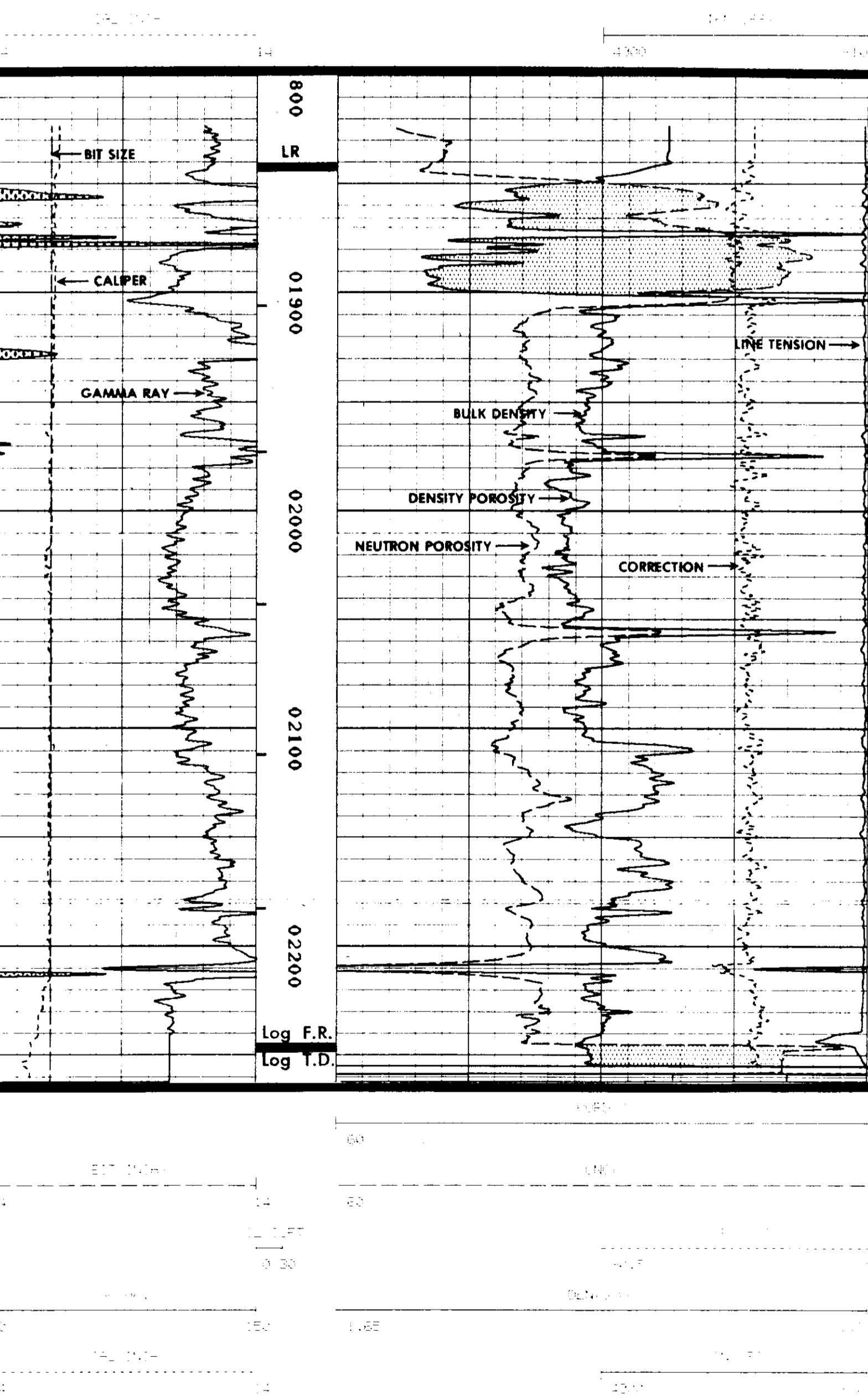
EQUIPMENT DATA

Tool Series No.	RUN NO. 1			RUN NO. 2			RUN NO. 3		
	CDL	CNLog	GR	CDL	CNLog	GR	CDL	CNLog	GR
Sera No.	158811	158811	158811						

APPENDIX

NAME	DEPTH	INTERVAL	VALUE	UNITS
R	2262	T0 - 1245	0.000	
CAL PER	2262	T0 - 1245	6.150	INCH
DEPTH	2262	T0 - 1245		FT/IN
R	2262	T0 - 1245	0.000	
DEPTH	2262	T0 - 1245		SHOULDER
R	2262	T0 - 1245	2.500	INCH
R	2262	T0 - 1245	0.950	G. CC
R	2262	T0 - 1245	2.650	G. CC
R	2262	T0 - 1245	0.000	FPI

REPORT MADE BY: W. WILSON
 DATE: 6-28-88
 FILE: 5
 DATE: 6-28-88
 TIME: 04:10 PM
 PAGE: 10/11



- End -