

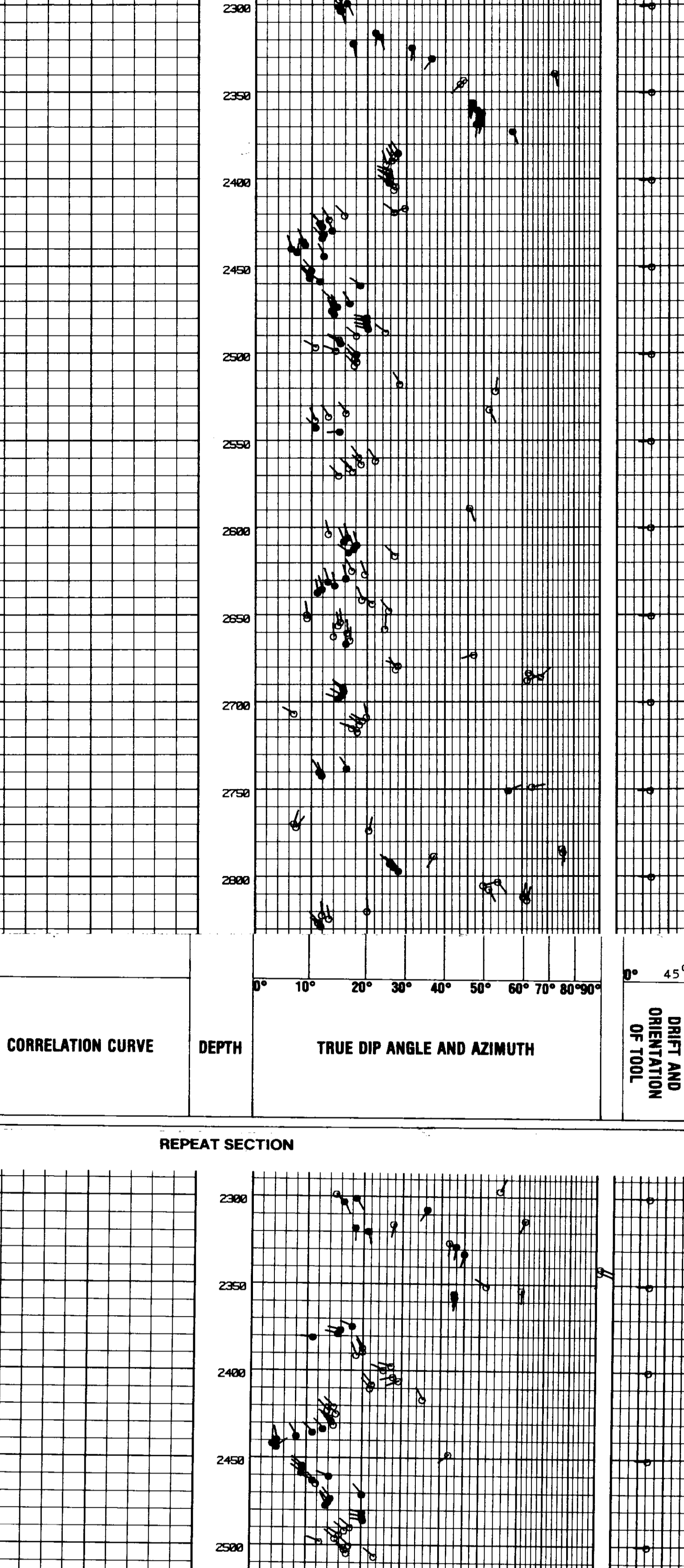


Company: ARCO OIL AND GAS CO. Well: COLUMBIA COUNTY 42-3-65. Field: MIST. Log No.: 2829. Log Date: 03/29/57. Log Type: ME. Log Length: 2230. Other Services: ME.

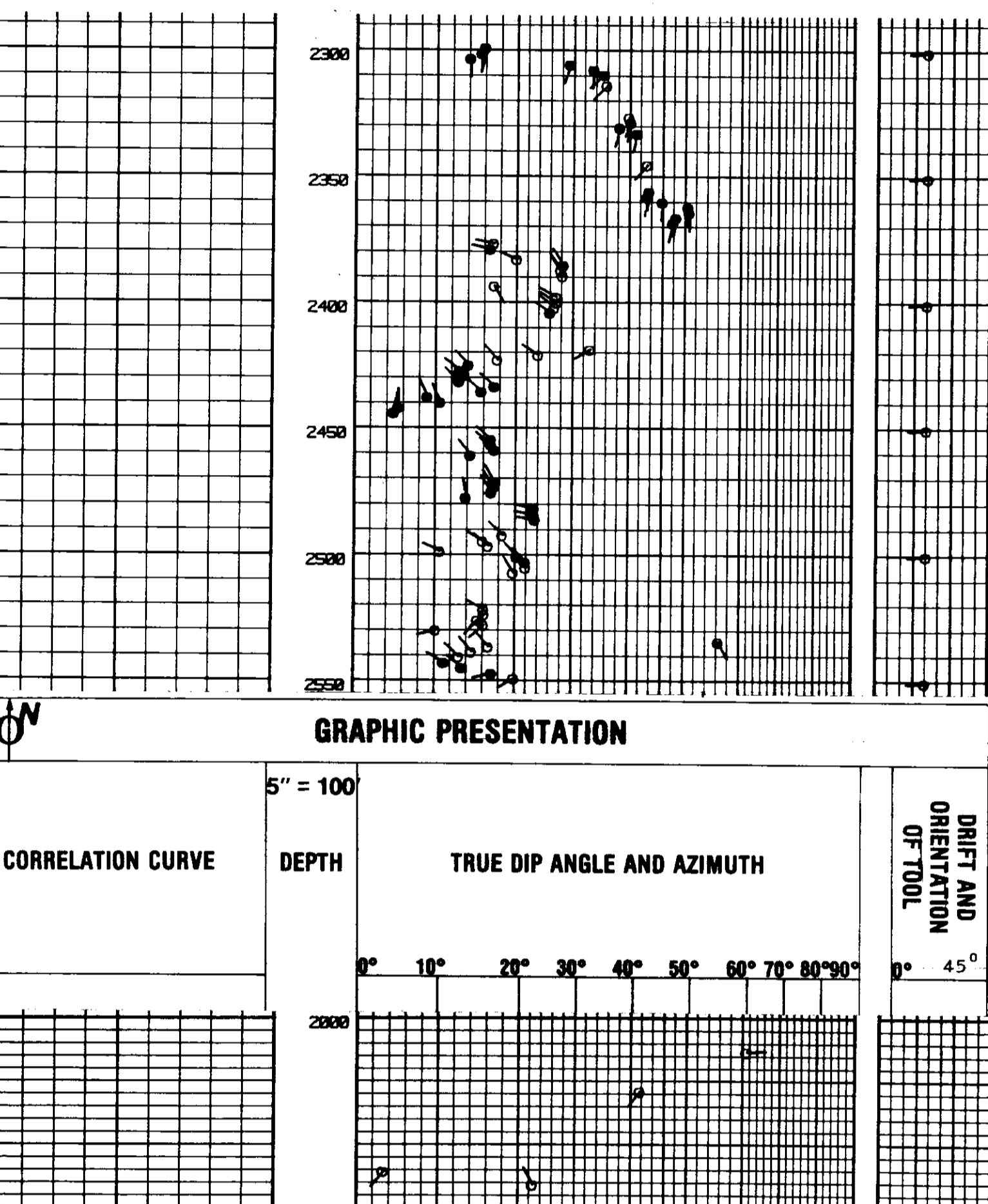
Table with columns: SERVICE TICKET NO., RP1 SERIAL NO., POR VERSION, CHANGE IN MUD TYPE OF ADDITIONAL SAMPLES, DATE, TYPE LOG, DEPTH, SCALE UP HOLE, SCALE DOWN HOLE.

MELEX DOES NOT GUARANTEE THE ACCURACY OF ANY INTERPRETATION OF LOG DATA, CONVERSION OF LOG DATA TO PHYSICAL ROCK PARAMETERS, OR RECOMMENDATIONS WHICH MAY BE GIVEN BY MELEX PERSONNEL OR WHICH MAY APPEAR ON THE LOG OR IN ANY OTHER FORM.

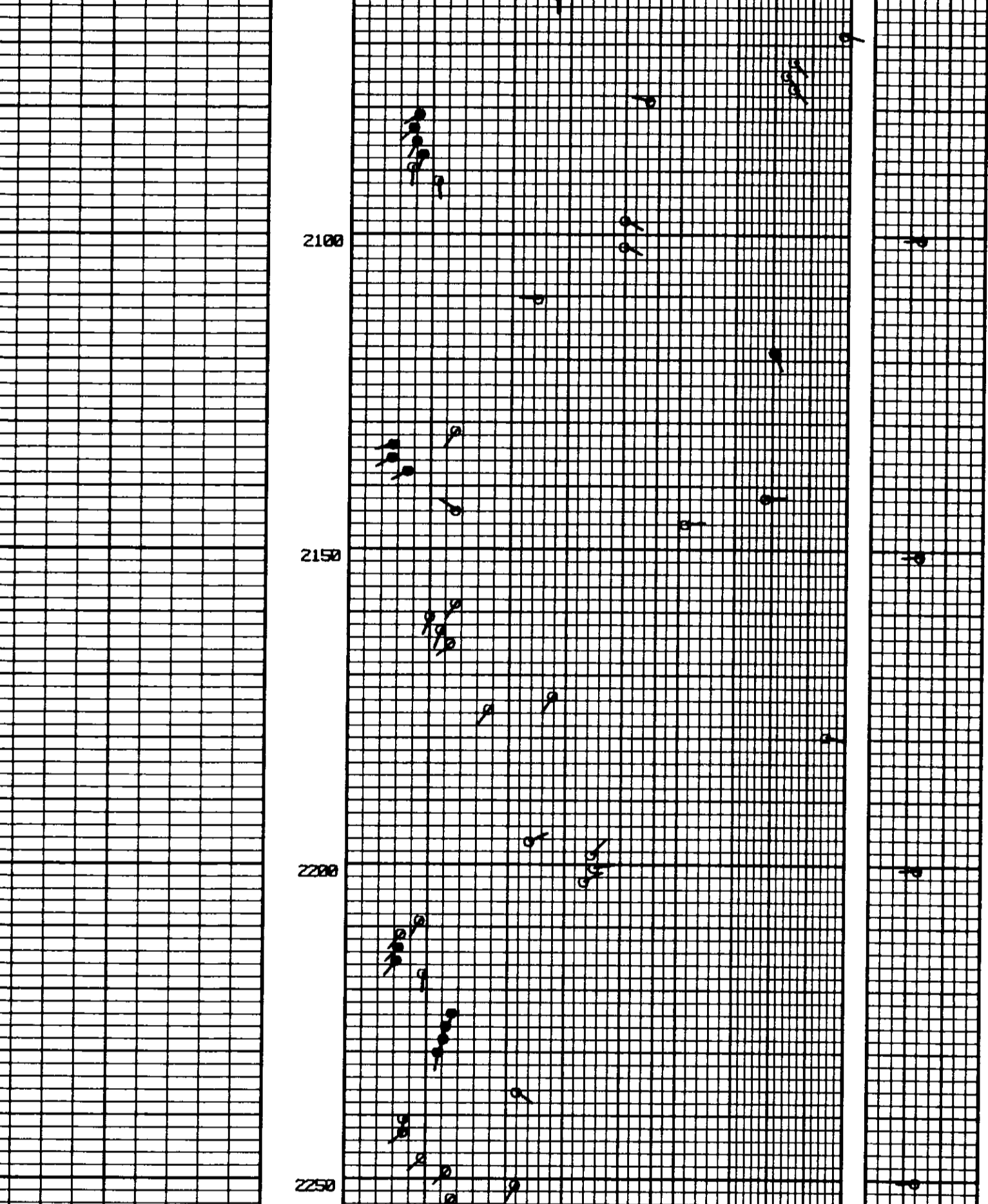
GRAPHIC PRESENTATION



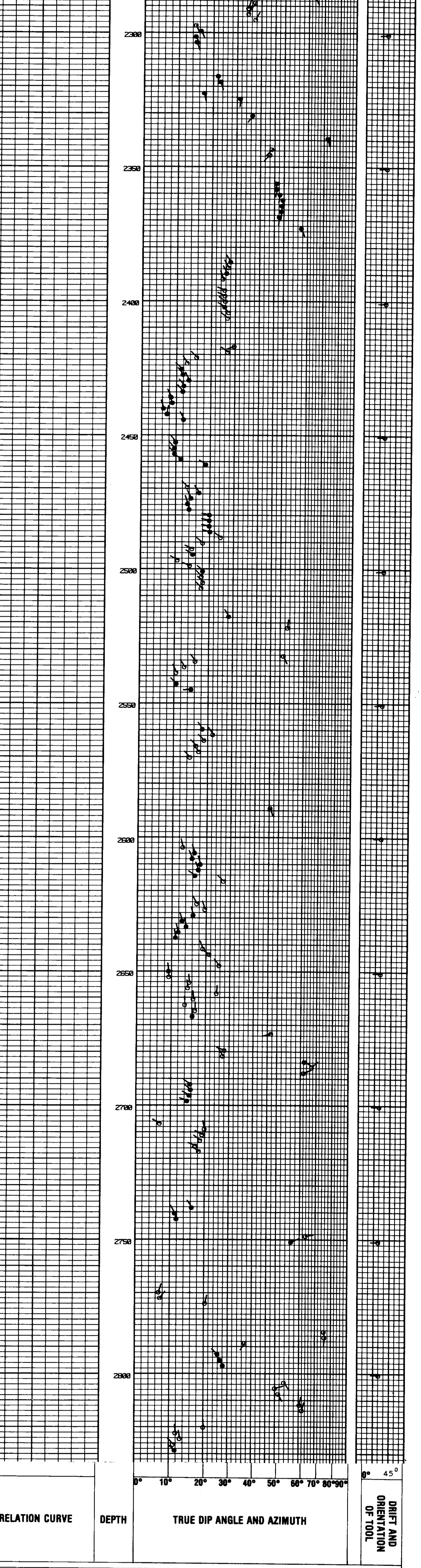
REPEAT SECTION



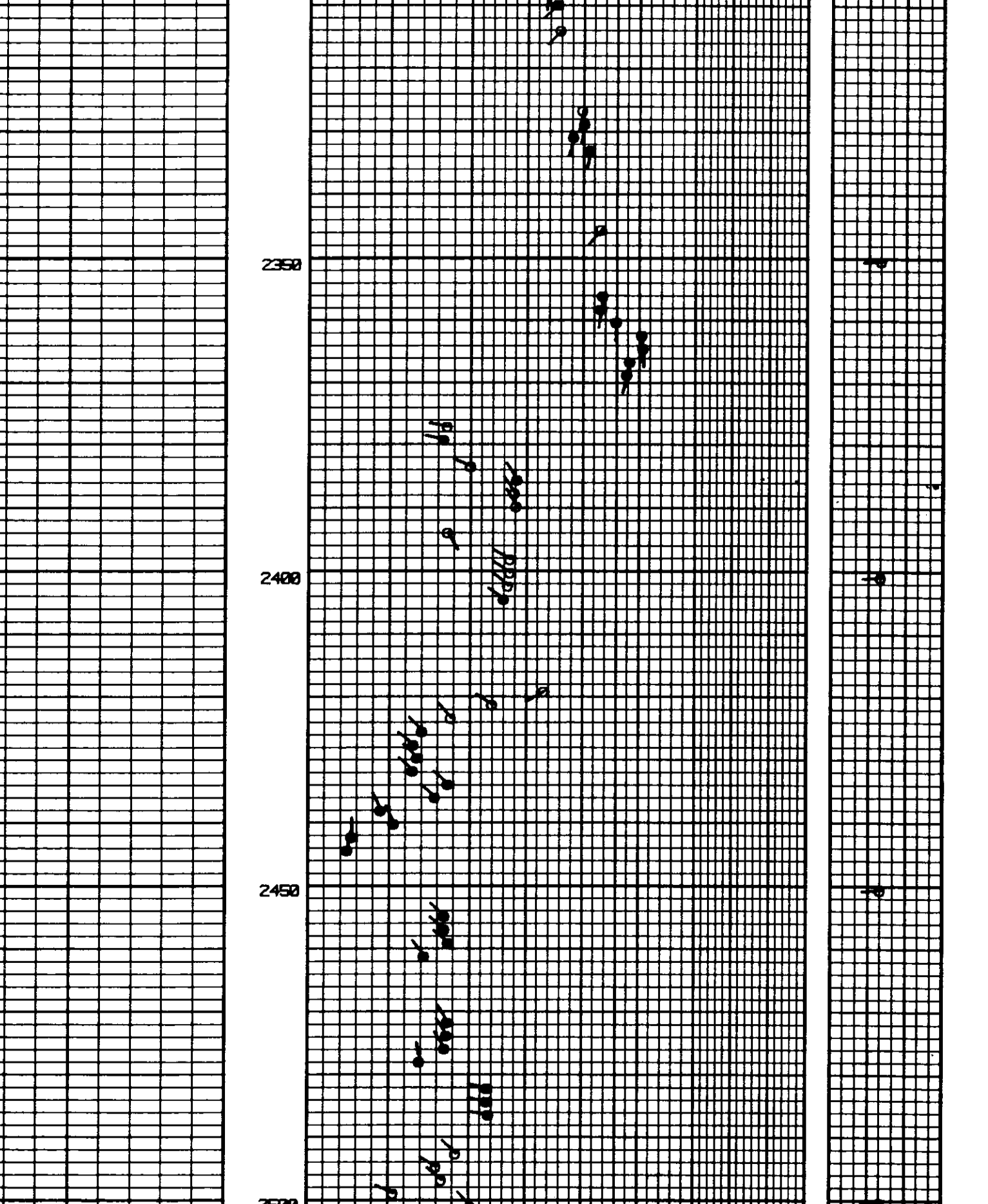
REPEAT SECTION



GRAPHIC PRESENTATION



REPEAT SECTION



- End -