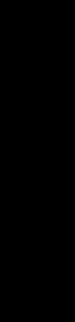


DUAL INDUCTION SFL-2



COMPANY: REICHOLD ENERGY
 WELL: COLUMBIA COUNTY 45-3
 RECEIVED: JUL 2 1982

FIELD: MIST
 COUNTY: COLUMBIA
 STATE: OREGON
 NATION: USA
 LOCATION: 1366' N & 303' E DF
 SECT: SE CORNER TWP. 6N
 RGT: 5M

PERMANENT DATUM: GL
 ELEV. OF PERM. DATUM: 615.4'
 LOG MEASURED FROM: KB
 DRG. MEASURED FROM: KB
 DATE: 15 JUN 1982

DEPTH-DRILLER: 3099.0'
 DEPTH-LOGGER: 3100.0'
 BTM. LOG INTERVAL: 3094.0'
 TOP LOG INTERVAL: 594.0'
 CASING-DRILLER: 620'
 CASING-LOGGER: 594'
 CASING LOGS: 2
 BIT SIZE: 6.25 LB/F
 BIT DEPTH: 3099'

OTHER SERVICES-
 NFI
 CIS

PROGRAM
 TAPE NO:
 20.2
 SERVICE
 ORDER NO:
 205615

TYPE FLUID IN HOLE: LIGNO
 DENSITY: 10.3 LB/G
 VISCOSITY: 42.0 S
 PH: 8.5
 FLUID LOSS: 4.7 C3
 SOURCE OF SAMPLE: CIRC
 RM: 1.190 DHMM AT 82.0 DF
 RMF: 1.210 DHMM AT 59.0 DF
 RMC: 2.000 DHMM AT 62.0 DF
 SOURCE RMF/RMC: MEAS/HEAS
 RM AT BHT: 0.937 DHM AT 106. DF
 RMF AT BHT: 0.706 DHM AT 106. DF
 RMC AT BHT: 1.221 DHM AT 106. DF
 TIME CIRC. STOPPED: 0800
 TIME LOGGER ON BTH.: 1030
 MAX. REC. TEMP: 106.0 DF
 LOGGING UNIT NO: 8128
 RECORDED BY: SACRAMENTO
 WITNESSED BY: ANDERSEN
 ALGER

REMARKS:

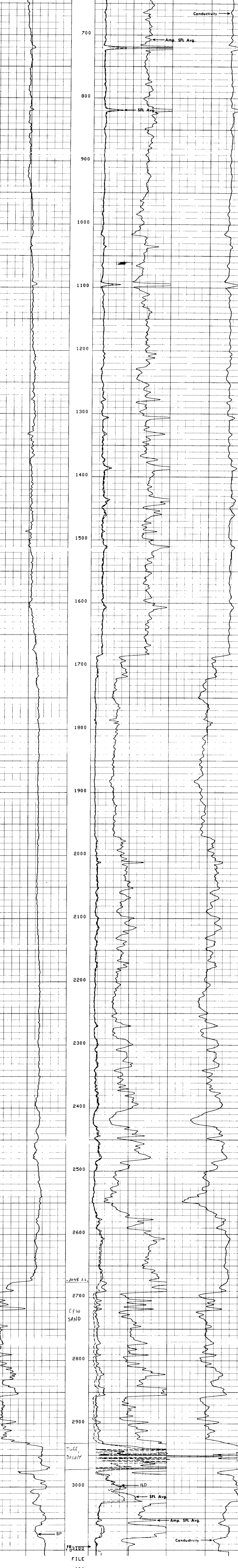
EQUIPMENT NUMBERS-
 DIS-EC 1181 DIC-DA 1149 SLS WA 1082 SLC-FA 1589
 MCD-D 290

ALL INTERPRETATIONS ARE OPINIONS BASED ON INFERENCES FROM ELECTRICAL OR OTHER MEASUREMENTS AND WE CAN NOT GUARANTEE THE ACCURACY OR CORRECTNESS OF ANY INTERPRETATIONS, AND WE SHALL NOT, EXCEPT IN THE CASE OF GROSS OR WILLFUL NEGLIGENCE ON OUR PART, BE LIABLE OR RESPONSIBLE FOR ANY LOSS, COSTS, DAMAGES OR EXPENSES INCURRED OR SUSTAINED BY ANYONE RESULTING FROM ANY INTERPRETATION MADE BY ANY OF OUR OFFICERS, AGENTS OR EMPLOYEES. THESE INTERPRETATIONS ARE ALSO SUBJECT TO OUR GENERAL TERMS AND CONDITIONS AS SET OUT IN OUR CURRENT PRICE SCHEDULE.

FILE

12

SP (MV)	0.0	ILD (DHMM)	30.00	CILD (MMHD)	0.0
		SFLA (DHMM)	6.000		
		SFLA (DHMM)	30.00	1000.	



SP (MV)	0.0	ILD (DHMM)	30.00	CILD (MMHD)	0.0
		SFLA (DHMM)	6.000		
		SFLA (DHMM)	30.00	1000.	

SENSDR MEASURE POINT TO TENSION REFERENCE POINT

AMPL	43.9	FEET	DT	41.4	FEET
SRAT	41.4	FEET	DTL	43.9	FEET
CALI	31.8	FEET	TT	43.9	FEET
SFL	6.4	FEET	ILM	9.4	FEET
SP	2.5	FEET	ILD	5.8	FEET
TENS	.0	FEET	SPAR	2.5	FEET
NOIS	35.7	FEET			

PARAMETERS

NAME	VALUE	UNIT	NAME	VALUE	UNIT
DTS	100.0		BS	6.250	IN
DTF	189.0	US/F	DTM	56.000	US/F
SBR	1.000	DHMM	DSEC	6.600	MMHD
FPHI	SPHI		MSEC	0.3000	MMHD
DD	0.0		BHS	OPEN	

COMPANY: REICHOLD ENERGY
 WELL: COLUMBIA COUNTY 45-3
 FIELD: MIST
 COUNTY: COLUMBIA STATE: OREGON
 SCHL. FR: 43-05-65
 SCHL. TD: 3100
 DRLR. TD: 3099
 Elev: KB 626.8
 DF: 615.4
 GL: 615.4

-END-