

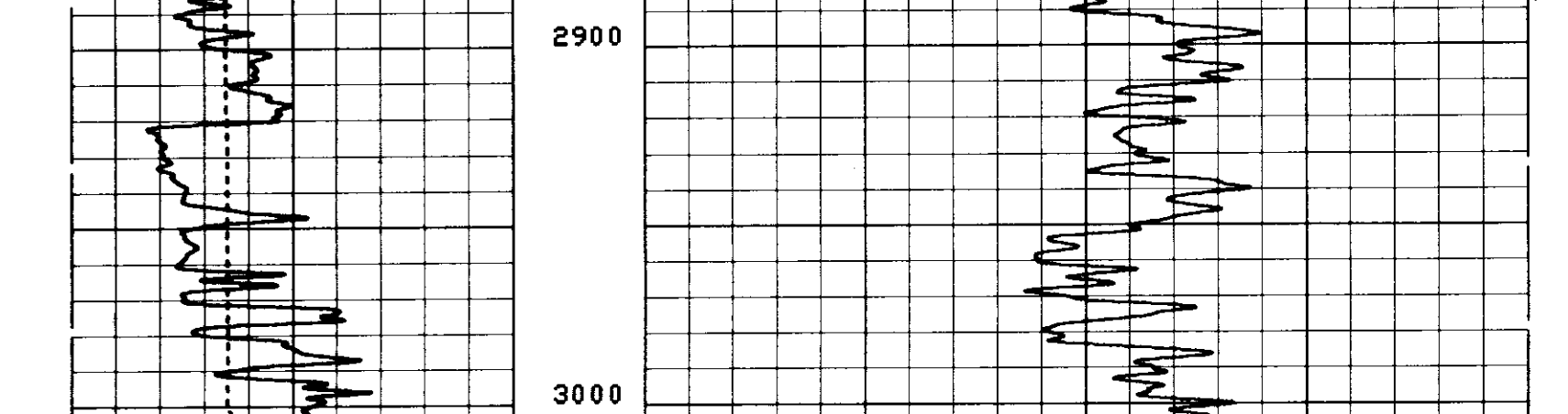
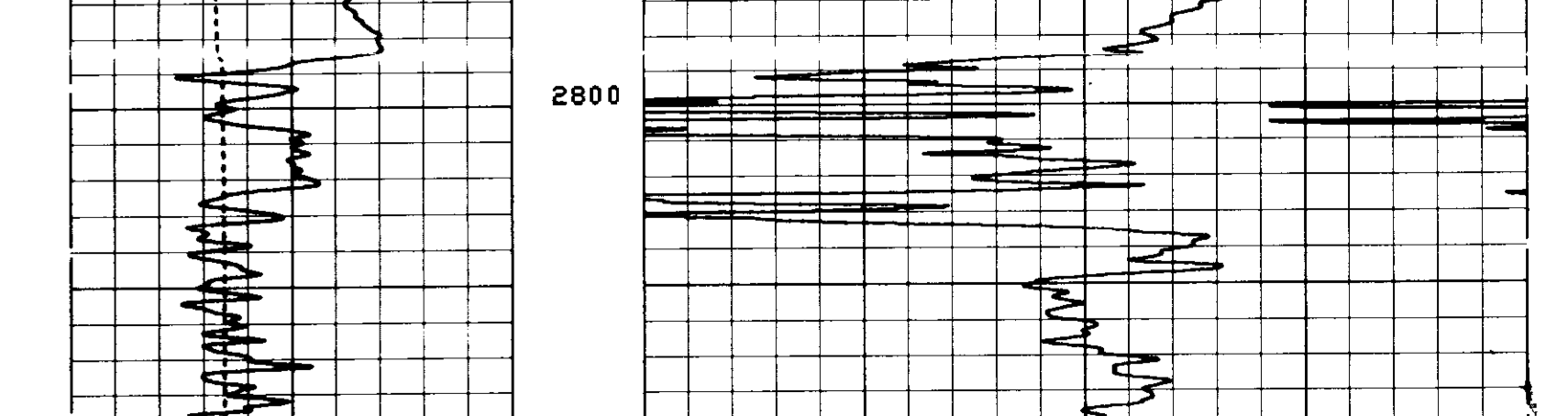
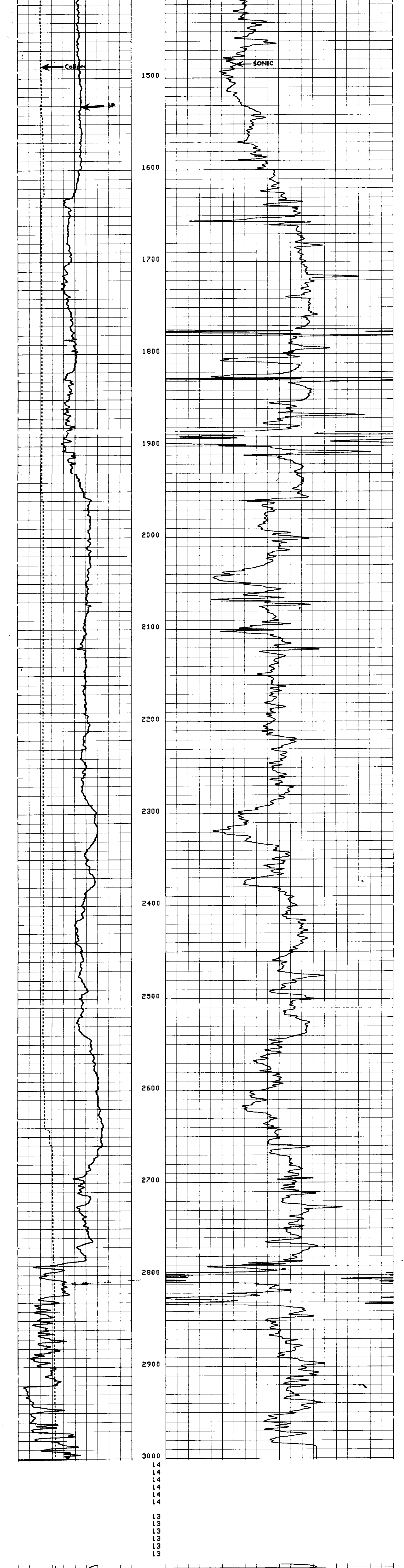
COMPANY	REICHOLD ENERGY CORPORATION
WELL	COLUMBIA COUNTY NO. 43-11 RD #1
FIELD	MIST NEHALEM BASIN
COUNTY	COLUMBIA STATE OREGON
LOCATION	11-6N-5W EAST 1/4 OF SECTION 6, T11N, R11E, S10E
DATE	6-21-80
LOG MEASURED FROM	KB 0.55 ft. Above Perm. Datum
PERMANENT DATUM	DL 787.34
DRILLING MEASURED FROM	KB
DATE	6-21-80
DEPTH - DILLER	3415
DEPTH - LOGGER (S&H)	3409
DEPTH - LOG INTERVAL	3396
DEPTH - LOG DILLER	1,400 @ 405
CONTINGENT LOGGER	--
BIT SIZE	6 1/2
TYPE FLUID IN HOLE	L. GANDESULFONATE
DENSITY	9.5
VISC.	37
PH	7.5
SOURCE OF SAMPLE	C. BRILLIATION
RM @ MEAN TEMP.	2.7 @ 60 F
RM @ MAX. TEMP.	2.8 @ 60 F
RM @ MIN. TEMP.	2.8 @ 60 F
SOURCE KNOB	M
RM @ BHT	1.58 @ 103 F
RM @ LOGGER	1.50 @ 103 F
CALCULATION STOPPED	1500
LOGGER ON BOTTOM	0100
MAX. MEAS. TEMP.	6.22
LOGGER ON BOTTOM	8128
LOGGER ON BOTTOM	BRIDGE
LOGGER ON BOTTOM	BRIDGE

FOLD HERE The well name, location and borehole reference data were furnished by the customer.

Run No.	ONE	SCALE CHANGES	Type Log	Depth	Scale Up Hole	Scale Down Hole
Service Order No.	123896					
Fluid Level	FULL					
EQUIPMENT DATA			LOGGING DATA			
Sonic Panel No.	443		Porosity Selectors	Depth		
Sonic Cart No.	1002		Δtm	Δt	Cp	Scale
Sonic Sonde No.	346					
Mem. Panel No.	CSJ					
G.R. Cart. No.	--					
G.R. Panel No.	--					
Caliper No.	1237					
TTR No.	--					
Centralizers: No.	--					
Standoffs: No.	--					
Time Const.-Sec.	--					
Speed - F.P.M.	50					
CALIBRATION DATA			REMARKS			
BKG. CPS	--		REPEAT INTERVAL FROM 2800' TO 3000'			
Source CPS	--		INTERMITTENT NOISE FROM 1760' TO 1900' ON SONIC.			
Tc Sec	--		Velocity (ft/sec) = 1,000,000 / Interval Transit Time (microseconds per foot)			

All interpretations are opinions based on inferences from electrical or other measurements and we cannot, and do not guarantee the accuracy or correctness of any interpretations, and we shall not, except in the case of gross or willful negligence on our part, be liable or responsible for any loss, costs, damages or expenses incurred or sustained by anyone resulting from any interpretation made by any of our officers, agents or employees. These interpretations are also subject to Clause A of our General Terms and Conditions as set out in our current Price Schedule.

CALIPER	DIAM. IN INCHES	5"	15"
SPONTANEOUS-POTENTIAL	MILLIVOLTS	-	+



5.000 CALIPER	15.00	175.0	DT (US/F)	75.00
-100.0 SP (MV)	0.0			

PARAMETERS					
NAME	UNIT	VALUE	NAME	UNIT	VALUE
DD		0.0	BHS	DPEN	FPHI
DTF	US/F	189.0	DTM	US/F	55.60
BS	INCH	6.250		CDTS	SPHI
					100.0

SPONTANEOUS-POTENTIAL	10	MILLIVOLTS
CALIPER	DIAM. IN INCHES	5" 15"
INTERVAL TRANSIT TIME	MICROSECONDS PER FOOT	175 75

COMPANY	REICHOLD ENERGY CORPORATION	SCHL. FR	3396
WELL	COLUMBIA COUNTY NO. 43-11 REDRILL NO. 1	SCHL. TO	3409
FIELD	MIST NEHALEM BASIN	DRLR. TO	3415
COUNTY	COLUMBIA STATE OREGON	Elev.	KB 797.89
		DF	--
		GL	787.34

DETAIL LOG			
CALIPER	DIAM. IN INCHES	5"	15"
SPONTANEOUS-POTENTIAL	MILLIVOLTS	-	+
INTERVAL TRANSIT TIME	MICROSECONDS PER FOOT	175	75
INTEGRATED TRAVEL TIME			