

CC 43-27-65

REICHOLD ENERGY CORP.
 COLUMBIA CO #43-27
 MIST FIELD
 COLUMBIA COUNTY, OREGON
 RUN NO. ONE 19-AUG-84
 PCCC
 ARROW PLOT FROM CLUSTER PROGRAM

106 2 6

CORRELATION LENGTH 4 FT.
 STEP LENGTH 2 FT.
 SEARCH ANGLE 30 DEGREES X2
 HOT-G CSU VAX 11/780

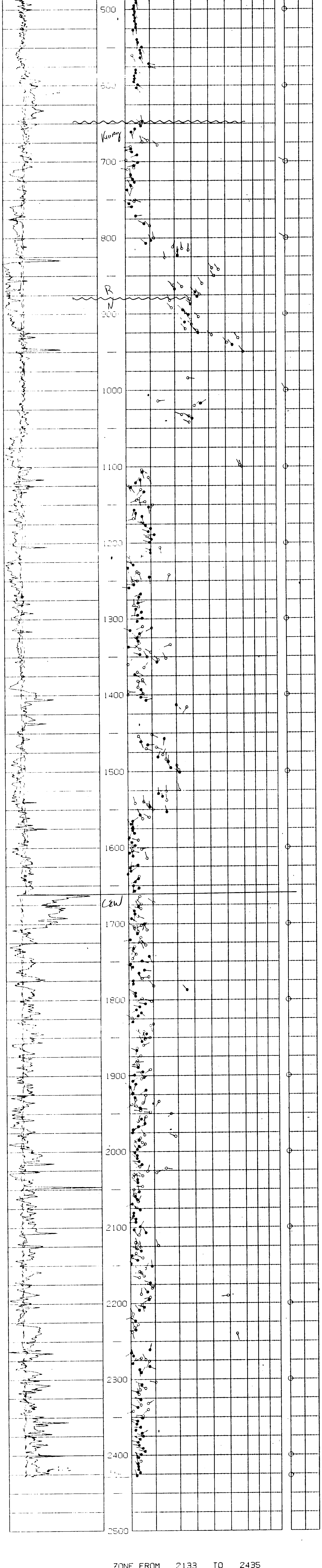
BPB 105894 001

POOLED ARROW PLOT
 2 LEVELS POOLED WHEN WITHIN
 3.5 DEGREES SOLID ANGLE
 BLACK ARROWS ARE POOLED RESULTS

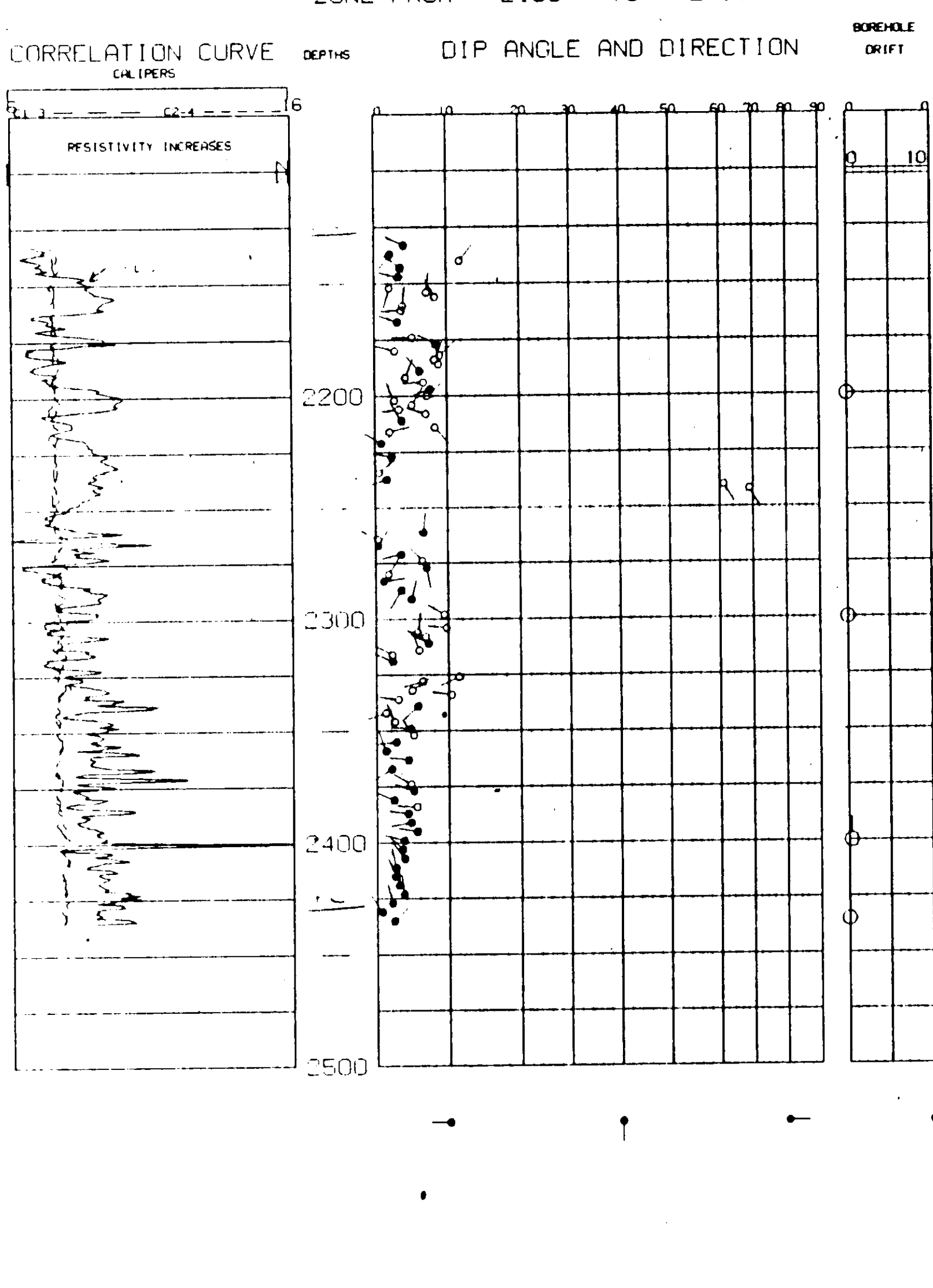
CORRELATION LENGTH 4 FT.
 STEP LENGTH 2 FT.
 SEARCH ANGLE 30 DEGREES X2

PC0130023518307001020420

ZONE FROM 415 TO 2427



ZONE FROM 2133 TO 2435



- | | | | |
|---------------|-------------------------|--------|-------|
| AREA1 [10689] | 23-AUG-1984 19:07:26.88 | USERS1 | 10689 |
| AREA1 [10689] | 23-AUG-1984 19:07:26.88 | USERS1 | 10689 |
| AREA1 [10689] | 23-AUG-1984 19:07:26.88 | USERS1 | 10689 |
| AREA1 [10689] | 23-AUG-1984 19:07:26.88 | USERS1 | 10689 |
| AREA1 [10689] | 23-AUG-1984 19:07:26.88 | USERS1 | 10689 |
| AREA1 [10689] | 23-AUG-1984 19:07:26.88 | USERS1 | 10689 |
| AREA1 [10689] | 23-AUG-1984 19:07:26.88 | USERS1 | 10689 |
| AREA1 [10689] | 23-AUG-1984 19:07:26.88 | USERS1 | 10689 |
| AREA1 [10689] | 23-AUG-1984 19:07:26.88 | USERS1 | 10689 |
| AREA1 [10689] | 23-AUG-1984 19:07:26.88 | USERS1 | 10689 |
| AREA1 [10689] | 23-AUG-1984 19:07:26.88 | USERS1 | 10689 |
| AREA1 [10689] | 23-AUG-1984 19:07:26.88 | USERS1 | 10689 |
| AREA1 [10689] | 23-AUG-1984 19:07:26.88 | USERS1 | 10689 |
| AREA1 [10689] | 23-AUG-1984 19:07:26.88 | USERS1 | 10689 |
| AREA1 [10689] | 23-AUG-1984 19:07:26.88 | USERS1 | 10689 |
| AREA1 [10689] | 23-AUG-1984 19:07:26.88 | USERS1 | 10689 |
| AREA1 [10689] | 23-AUG-1984 19:07:26.88 | USERS1 | 10689 |
| AREA1 [10689] | 23-AUG-1984 19:07:26.88 | USERS1 | 10689 |
| AREA1 [10689] | 23-AUG-1984 19:07:26.88 | USERS1 | 10689 |
| AREA1 [10689] | 23-AUG-1984 19:07:26.88 | USERS1 | 10689 |
| AREA1 [10689] | 23-AUG-1984 19:07:26.88 | USERS1 | 10689 |

-END-