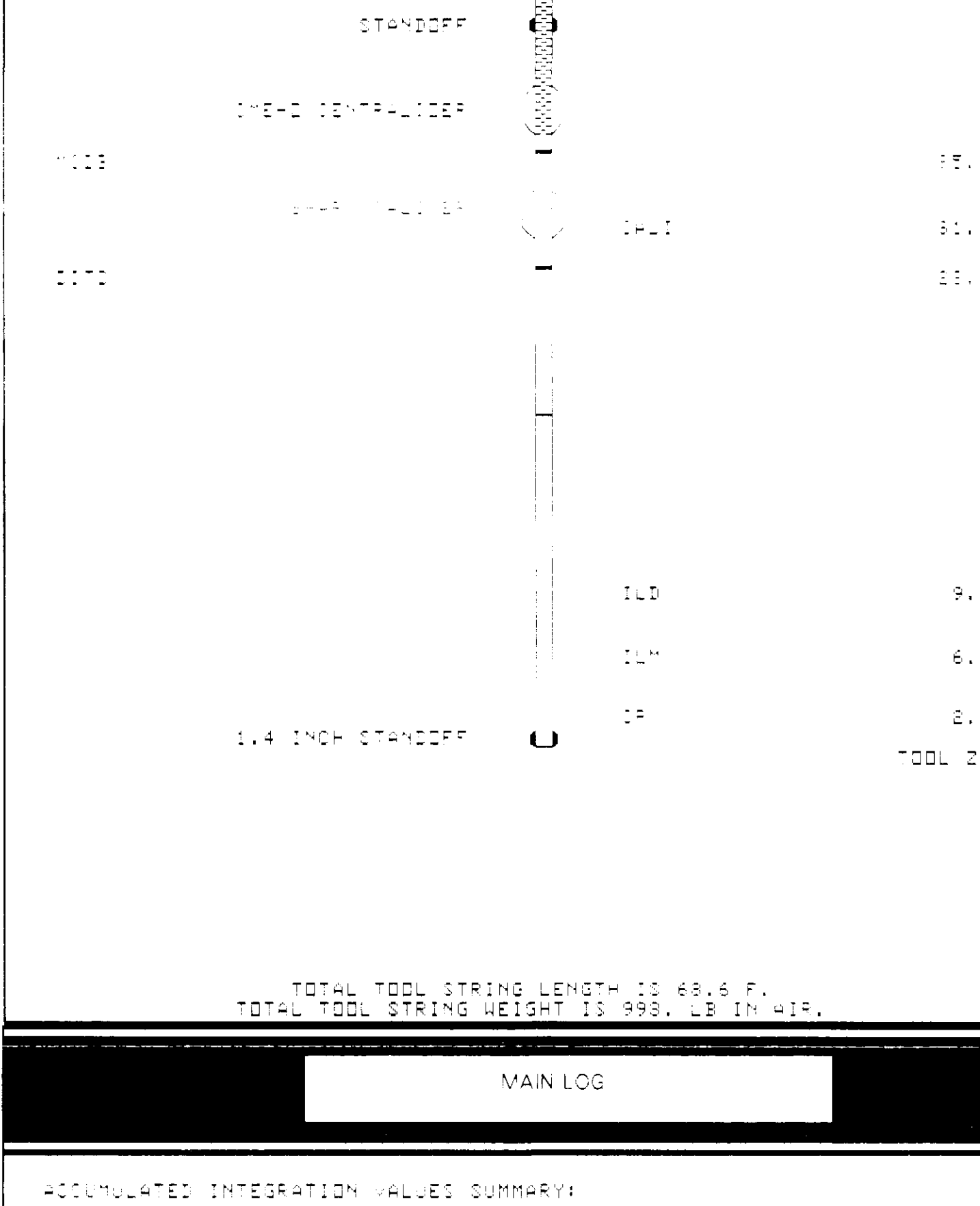


COMPANY: NAHAMA & WEAGANT ENERGY CO.
 WELL: "STEELHEAD" #43-33-75
 FIELD: MIST
 COUNTY: COLUMBIA
 STATE: OREGON
 DATE: 17 JUN 1997
 TIME: 10:00:01
 LOG MEASURED FROM: KII
 ABOVE FROM: DUMM
 OTHER SERVICES: NONE

Run No. ONE
 Service Order No. 56928
 Drilling Fluid Level 5.0 F
 Salinity 9500 PPM
 Rmt @ BHT 3675 CHMM @ 880 DEG F
 Rmc @ BHT 2324 CHMM @ 880 DEG F
 Logging Speed 36000 CF/HR

EQUIPMENT DATA
 Tool Number 1 DIS-EC 298
 Tool Number 2 DIC-DA 1078
 Tool Number 3 MCD-DA 237
 Tool Number 4 SLS-WA 335
 Tool Number 5 SLC-MA 78
 Tool Number 6 SGC-C 3504
 Tool Number 7 EM-BC 324
 Tool Number 8 SLM-CA 443
 Tool Number 9 NLM-BC 456
 Tool Number 10
 Tool Number 11
 Tool Number 12

REMARKS:
 3 INCH STANDOFFS USED ON DIL
 SONIC CENTRALIZED WITH CME-Z'S AND STANDOFFS
 CALIPER NOT PRESENTED ON REPEATS - JAMMED WITH SHALE
 CALIPER SUPPRESSED DUE TO HIGH DEVIATION
 MAXIMUM HOLE DEVIATION IS 38 DEGREES AT 1778 FT



TOTAL TOOL STRING LENGTH IS 68.6 F.
 TOTAL TOOL STRING HEIGHT IS 99.9 F IN H2O.

MAIN LOG

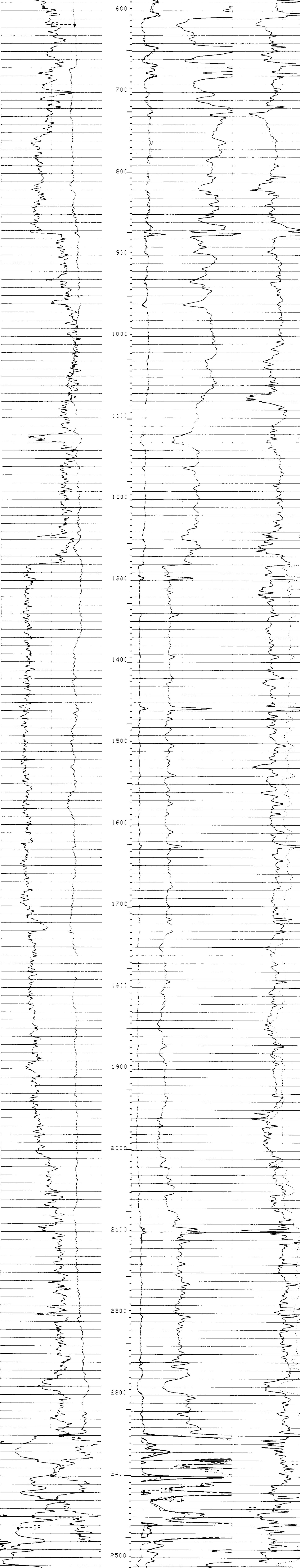
ACCUMULATED INTEGRATION VALUES SUMMARY:

Integr	Depth	Volume	Area	Perf	Flow	Temp	Pressure	Velocity	Time
Integr	Depth	Volume	Area	Perf	Flow	Temp	Pressure	Velocity	Time

ELEMENT MARK SUMMARY:

OUTPUT	IN	MIN	MAX	Avg	STDEV
Integr	Depth	Volume	Area	Perf	Flow

GR(GAP)	5000	SFLA(CHMM)	30000	OLD(MM/M)	00
SP(MV)	3000	SFLA(CHMM)	30000	DT(US/F)	75000



CP 32.6 FILE 14 17-JUN-1997 13:57
 INPUT FILE(S): 00-0000.DMP
 9 17-1997-01:15

GR(GAP)	5000	SFLA(CHMM)	30000	OLD(MM/M)	00
SP(MV)	3000	SFLA(CHMM)	30000	DT(US/F)	75000

SENSOR MEASURE POINT TO TOOL ZERO

SR	4.7	PERF	44.1	PERF	44.1
TR	4.1	PERF	44.1	PERF	44.1
TT	4.1	PERF	44.1	PERF	44.1
TT	4.1	PERF	44.1	PERF	44.1
CP	44.1	PERF	44.1	PERF	44.1
CALL	31.0	PERF	44.1	PERF	44.1
ILR	0.1	PERF	44.1	PERF	44.1
SP	30.0	PERF	44.1	PERF	44.1
TENS	30.0	PERF	44.1	PERF	44.1
NDIS	2.0	PERF	44.1	PERF	44.1

PARAMETERS

PARAMETER	VALUE	UNIT
SMB	DISH	
TODP	DISH	
RAT	15	HZ
DD	100.0000	
DEL	100.0000	
AMP	100.0000	
CBL	100.0000	
RFM	100.0000	
SS	100.0000	
TOD	100.0000	
DTF	100.0000	US/F
CDT	100.0000	US/F
SPT	100.0000	
FP	100.0000	
DD	100.0000	
UMUS	100.0000	

COMPANY NAHAMA & WEAGANT ENERGY CO. SCHL FR 2540.0 F
 WELL "STEELHEAD" #43-33-75 SCHL TD 2547.0 F
 FIELD MIST DPLR TD 2548.0 F
 COUNTY COLUMBIA STATE OREGON Elev: KB 1051.0 F
 GL 1041.0 F