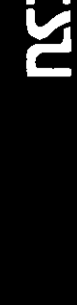


2" DUAL INDUCTION-SFL



COMPANY: REICHHOLD ENERGY CORPORATION
 WELL: "COLUMBIA COUNTY" #43-34 REBRILL #1
 FIELD: MIST
 COUNTY: COLUMBIA
 STATE: OREGON
 NATION: U.S.A.
 LOCATION: 21.6"N AND 107.9"W FROM SE CORNER OF TWP: 6N
 SEC: 34
 RECEIVED: PILD
 MAY 15 1985
 DEPT. OF GEOLOGY
 ASTORIA, OREGON

PERMANENT DATUM: GL
 ELEV. OF PERM. DATUM: 807.6 F
 LOG MEASURED FROM: K3
 DRLG. MEASURED FROM: K3
 ELEVATIONS:-
 K1: 819.1 F
 D1: 819.1 F
 K2: 807.6 F
 K3: 807.6 F

DATE: 26 MAR 85
 RUN NO: 1

DEPTH-DRILLER: 2225.0 F
 DEPTH-LOGGER: 2220.0 F
 BTM, LOG INTERVAL: 2214.0 F
 TOP LOG INTERVAL: 431.0 F

CASING-DRILLER: 431 F
 CASING-LOGGER: 8 5/8"
 CASING: 7 7/8"
 BIT SIZE: 2225 F
 DEPTH: 2225 F

OTHER SERVICES:-
 DMC
 HDT

PROGRAM
 TAPE NO: 26.8
 SERVICE ORDER NO: 432435

TYPE FLUID IN HOLE: GEL/LIGNO
 DENSITY: 11.0 LB/G
 VISCOSITY: 47.0 S
 PH: 9.5
 FLUID LOSS: 6.0 C3
 SOURCE OF SAMPLE: MUDDPIT
 RM: 2.120 DHMM AT 60.0 DEGF
 RMF: 1.740 DHMM AT 45.0 DEGF
 RMC: 5.660 DHMM AT 45.0 DEGF
 SOURCE RMF/RMC: MEASURED/MEASURED
 RM AT BHT: 1.406 DHMM AT 94.0 DEGF
 RMF AT BHT: .895 DHMM AT 94.0 DEGF
 RMC AT BHT: 2.914 DHMM AT 94.0 DEGF

TIME CIRC. STOPPED: 04:00 3-26
 TIME LOGGER ON BTH.: 07:15 3-26

MAX. REC. TEMP: 94.0 DEGF

LOGGING UNIT NO: 8128
 LOGGING UNIT LOC: SACRAMENTO
 RECORDED BY: PILCH
 WITNESSED BY: THOMAS/ALGER

REMARKS:
 950 PPM CHLORIDES
 DUAL AND SONIC RUN IN COMBINATION.
 CHE-2 AND STANDOFFS USED FOR DENTRALIZATION.
 CALIPER RESPONSE AFFECTED BY 25 DEGREE KICKOFF AT 480'.

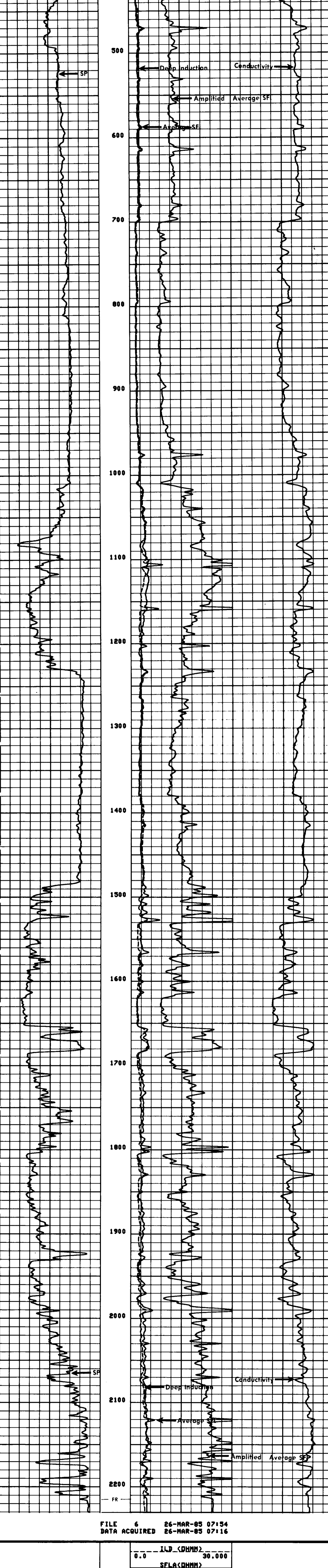
EQUIPMENT NUMBERS-
 BIS-EC 691 DIC-DA 342 SLS-RC 252 SLC-FA 1321
 MCB-DA 1237 IEM-BD 232 SLM-CA 138

ALL INTERPRETATIONS ARE OPINIONS BASED ON INFERENCES FROM ELECTRICAL OR OTHER MEASUREMENTS AND WE CANNOT, AND DO NOT GUARANTEE THE ACCURACY OR CORRECTNESS OF ANY INTERPRETATIONS, AND WE SHALL NOT, EXCEPT IN THE CASE OF GROSS OR WILLFUL NEGLIGENCE ON OUR PART, BE LIABLE OR RESPONSIBLE FOR ANY LOSS, COSTS, DAMAGES OR EXPENSES INCURRED OR SUSTAINED BY ANYONE RESULTING FROM ANY INTERPRETATION MADE BY ANY OF OUR OFFICERS, AGENTS OR EMPLOYEES. THESE INTERPRETATIONS ARE ALSO SUBJECT TO OUR GENERAL TERMS AND CONDITIONS AS SET OUT IN OUR CURRENT PRICE SCHEDULE.

FILE 6 26-MAR-85 07:159
 DATA ACQUIRED 26-MAR-85 07:146

SP (MV)	JLD (DHMM)	SFLA (DHMM)	SFLA (DHMM)	CILD (MHMM)
-100.0	0.0	0.0	0.0	0.0
	30.000	6.0000	30.000	1000.0

FILE 6 26-MAR-85 07:157
 DATA ACQUIRED 26-MAR-85 07:146



FILE 6 26-MAR-85 07:154
 DATA ACQUIRED 26-MAR-85 07:116

SP (MV)	ILD (DHMM)	SFLA (DHMM)	SFLA (DHMM)	CILD (MHMM)
-100.0	0.0	0.0	0.0	0.0
	30.000	6.0000	30.000	1000.0

SENSOR MEASURE POINT TO TOOL ZERO

CBL 43.9 FEET	AMPL 43.9 FEET
TT3 40.1 FEET	TT4 39.1 FEET
TT1 42.9 FEET	TT2 43.9 FEET
CALI 31.8 FEET	SRAT 41.4 FEET
SFL 6.4 FEET	ILD 9.4 FEET
SP 2.5 FEET	ILM 5.7 FEET
TENS 2.3 FEET	SPAR 2.5 FEET
NOIS 35.6 FEET	

PARAMETERS

NAME	VALUE	UNIT	NAME	VALUE	UNIT
MSV1	HF1		DWS	16	
DSIN	5	US	DDEL	200	US
CBTS	100.000		DMCO	512	
DTF	189.000	US/F	DTM	56.0000	US/F
SBR	1.00000	DHMM	DSEC	5.70000	MHMM
FPHI	SPHI		MSEC	7.00000	MHMM
BS	7.07500	IN	BWS	OPEN	
PP	NDRM		DD	0.0	F

TAPE NOT MADE