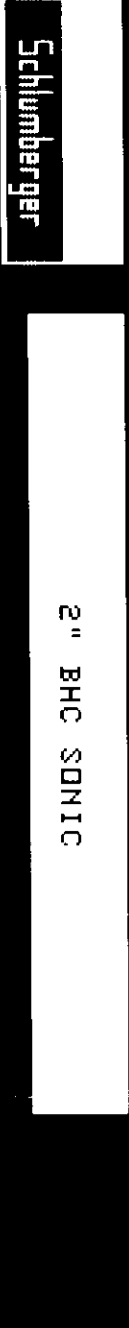


PC 43-34-65 & RD 1



CSU

COMPANY: REICHHOLD ENERGY CORPORATION

WELL: "COLUMBIA COUNTY" #43-34 REDRILL #1

FIELD: MIST  
 COUNTY: COLUMBIA  
 STATE: OREGON  
 NATION: U.S.-A.  
 LOCATION: 2116'N AND 1079'W FROM SE CORNER OF TWP: 6N  
 SEC: 34 RGE: 5W

RECEIVED: PILD  
 MAY 15 1985  
 DEPT. OF GEOLOGY  
 A GENERAL SERVICE

PERMANENT DATUM: GL ELEVATIONS-  
 ELEV. OF PERM. DATUM: 807.6 F  
 LOG MEASURED FROM: KB DF: 819.1 F  
 11.5 F ABOVE PERM. DATUM GL: 807.6 F  
 DRLG. MEASURED FROM: KB

DATE: 26 MAR 85  
 RUN NO: 1

DEPTH-DRILLER: 2225.0 F  
 DEPTH-LOGGER: 2220.0 F  
 BITM. LOG INTERVAL: 2178.0 F  
 TOP LOG INTERVAL: 431.0 F

CASING-DRILLER: 431 F  
 CASING-LOGGER: 431 F  
 CASING: 8 5/8"

BIT SIZE: 7 7/8"  
 BIT DEPTH: 2225 F

OTHER SERVICES-  
 DIL  
 HDT

PROGRAM  
 TAPE NO:  
 26.2  
 SERVICE  
 ORDER NO:  
 432435

TYPE FLUID IN HOLE: GEL/LIGNO  
 DENSITY: 11.0 LB/G  
 VISCOSITY: 47.0 S  
 PH: 9.5  
 FLUID LOSS: 6.0 C3  
 SOURCE OF SAMPLE: MUDPIT  
 RM: 2.120 OHMM AT 60.0 DEGF  
 RMF: 1.740 OHMM AT 45.0 DEGF  
 RMC: 5.660 OHMM AT 45.0 DEGF  
 SOURCE RMF/RMC: MEASURED/MEASURED  
 RM AT BHT: 1.406 OHMM AT 94.0 DEGF  
 RMC AT BHT: .895 OHMM AT 94.0 DEGF  
 RMC AT BHT: 2.914 OHMM AT 94.0 DEGF

TIME CIRC. STOPPED: 04:00 3-26  
 TIME LOGGER ON BTM.: 07:15 3-26

MAX. REC. TEMP: 94.0 DEGF

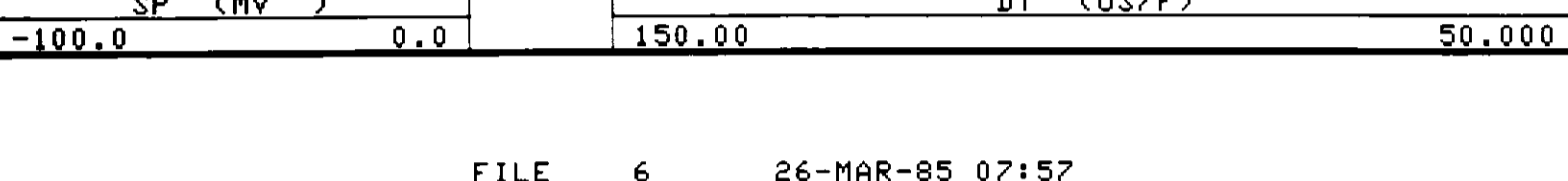
LOGGING UNIT NO: 8128  
 LOGGING UNIT LOC: SACRAMENTO  
 RECORDED BY: FILCH  
 WITNESSED BY: TMDMAS/ALGER

REMARKS:  
 950 PPM CHLORIDES  
 DUAL AND SONIC RUN IN COMBINATION.  
 CME-2 AND STANDOFFS USED FOR DENTRALIZATION.  
 CALIPER RESPONSE AFFECTED BY 25 DEGREE KICKOFF AT 480'.

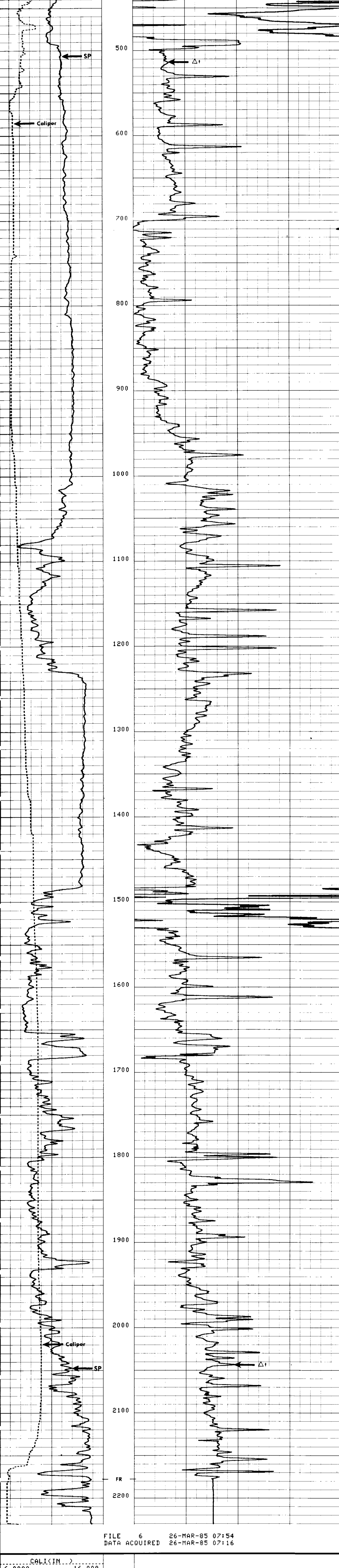
EQUIPMENT NUMBERS-  
 DIS-EC 691 DIC-DA 342 SLS-RC 252 SLC-FA 1321  
 MCD-DA 1237 IEM-BD 232 SLM-CA 138

ALL INTERPRETATIONS ARE OPINIONS BASED ON INFERENCES FROM ELECTRICAL OR OTHER MEASUREMENTS AND WE CANNOT, AND DO NOT GUARANTEE THE ACCURACY OR CORRECTNESS OF ANY INTERPRETATIONS, AND WE SHALL NOT, EXCEPT IN THE CASE OF GROSS OR WILLFUL NEGLIGENCE ON OUR PART, BE LIABLE OR RESPONSIBLE FOR ANY LOSS, COSTS, DAMAGES OR EXPENSES INCURRED OR SUSTAINED BY ANYONE RESULTING FROM ANY INTERPRETATION MADE BY ANY OF OUR OFFICERS, AGENTS OR EMPLOYEES. THESE INTERPRETATIONS ARE ALSO SUBJECT TO OUR GENERAL TERMS AND CONDITIONS AS SET OUT IN OUR CURRENT PRICE SCHEDULE.

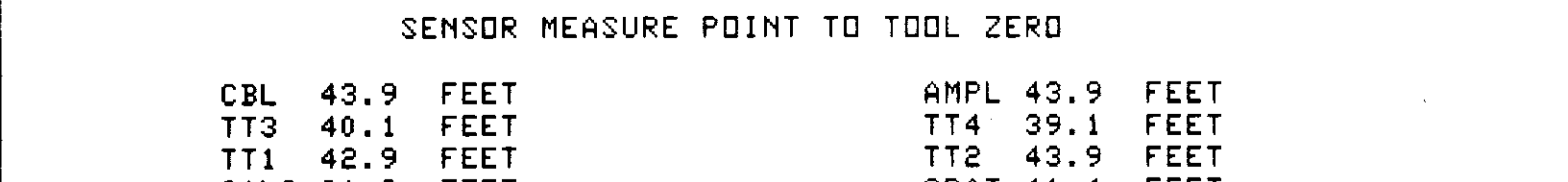
FILE 6 26-MAR-85 08:01  
 DATA ACQUIRED 26-MAR-85 07:46



FILE 6 26-MAR-85 07:57  
 DATA ACQUIRED 26-MAR-85 07:46



FILE 6 26-MAR-85 07:54  
 DATA ACQUIRED 26-MAR-85 07:16



SENSOR MEASURE POINT TO TOOL ZERO

CBL 43.9 FEET	AMPL 43.9 FEET
TT3 40.1 FEET	TT4 39.1 FEET
TT1 42.9 FEET	TT2 43.9 FEET
CALI 31.8 FEET	SRAT 41.4 FEET
SFL 6.4 FEET	ILD 9.4 FEET
SP 2.5 FEET	ILM 5.7 FEET
TENS 2.5 FEET	SPAR 2.5 FEET
NDIS 35.6 FEET	

PARAMETERS

NAME	VALUE	UNIT	NAME	VALUE	UNIT
HSV1	WF1		DWS	16	
DSIN	5	US	DDEL	200	US
CDTS	100.000		DWCO	512	
DTF	189.000	US/F	DTM	56.0000	US/F
SBR	1.00000	OHMM	DSEC	5.70000	MMHO
FPHI	SPHI		MSEC	7.00000	MMHO
BS	7.87500	IN	BHS	OPEN	
PP	NORM		DO	0.0	F

TAPE NOT MADE