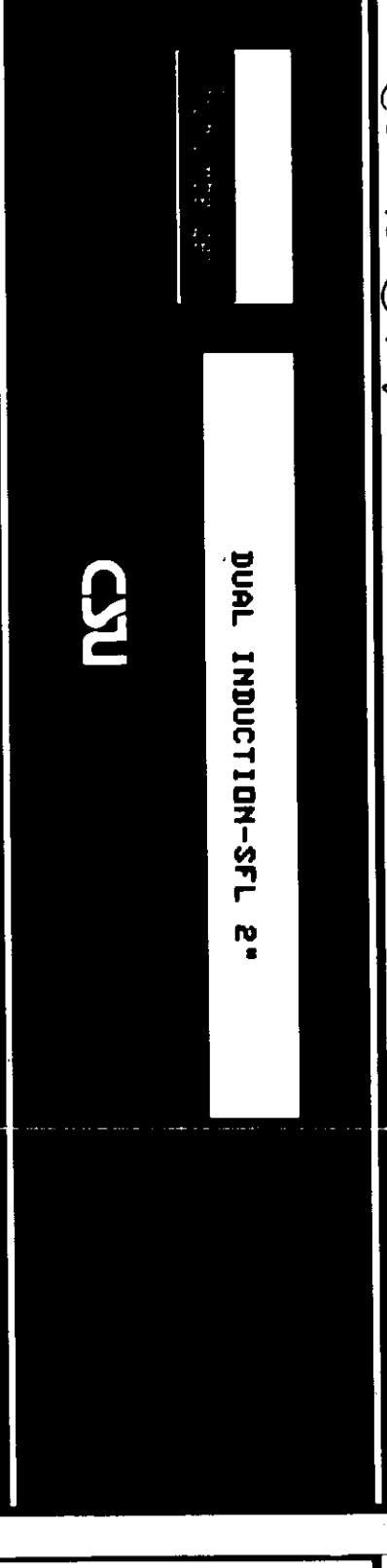


02 43-34105



COMPANY: REICHOLD ENERGY CORPORATION
 WELL: COLUMBIA COUNTY 43-34
 FIELD: MIST
 COUNTY: COLUMBIA
 STATE: OREGON
 LOCATION: 2116' N & 1079' W FR SE COR
 SECT: 34 TWP: 6N RGE: 5W
 PERMANT DATUM: GL ELEVATIONS-
 ELEV. OF PERM. DATUM: 807.6 F KBI 819.1 F
 LOG MEASURED FROM: KB SERVICE
 DRLG. MEASURED FROM: KB DFI: 807.6 F
 DATE: 18 MAR 85
 RUN NO: 1
 DEPTH-DRILLER: 2100.0 F
 DEPTH-LOGGER: 2098.0 F
 BTH. LOG INTERVAL: 2092.0 F
 TOP LOG INTERVAL: 431.0 F
 CASING-DRILLER: 431 F
 CASING-LOGGER: 431 F
 CASING: 8 5/8"
 BIT SIZE: 7 7/8"
 DEPTH: 2100 F

OTHER SERVICES-
 BHC
 HDT
 LDT/CNL/GR
 PROGRAM
 TAPE NO:
 26.2
 SERVICE
 ORDER NO:
 432410

TYPE FLUID IN HOLE: LIGNSULFONATE
 DENSITY: 10.4 LB/G
 VISCOSITY: 50.0 S
 PHI: 9.5
 FLUID LOSS: 5.4 C3
 SOURCE OF SAMPLE: FLOWLINE
 RM: 2.090 OHMM AT 57.0 DEGF
 RMF: 1.680 OHMM AT 49.0 DEGF
 RMC: 5.760 OHMM AT 50.0 DEGF
 SOURCE RMF/RMC: MEASURED/MEASURED
 RM AT BHT: 1.378 OHMM AT 90.0 DEGF
 RMF AT BHT: .969 OHMM AT 90.0 DEGF
 RMC AT BHT: 3.384 OHMM AT 90.0 DEGF
 TIME CIRC. STOPPED: 13:00 3/18
 TIME LOGGER ON BTH.: 15:00 3/18
 MAX. REC. TEMP: 90.0 DEGF
 LOGGING UNIT NO: 8128
 LOGGING UNIT LOC: SACRAMENTO
 RECORDED BY: MAYER
 WITNESSED BY: THOMAS

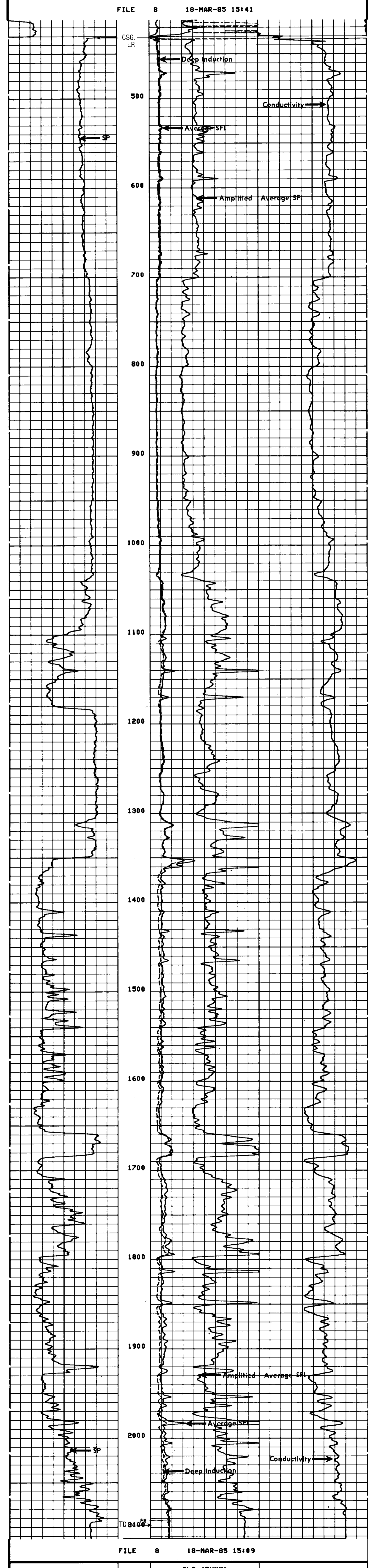
REMARKS:
 CHLORIDES: 700PPM
 DIL AND SONIC WERE RUN IN COMBINATION.
 FINS AND CHEZ WERE USED FOR CENTRALIZATION.

EQUIPMENT NUMBERS-
 DIS 691 DIC 658 MCD 1237 SLS 252
 SLC 1472 IEM 232 SLM 138

ALL INTERPRETATIONS ARE OPINIONS BASED ON INFERENCES FROM ELECTRICAL OR OTHER MEASUREMENTS AND WE CANNOT, AND DO NOT GUARANTEE THE ACCURACY OR CORRECTNESS OF ANY INTERPRETATIONS, AND WE SHALL NOT, EXCEPT IN THE CASE OF GROSS OR WILLFUL NEGLIGENCE ON OUR PART, BE LIABLE OR RESPONSIBLE FOR ANY LOSS, COSTS, DAMAGES OR EXPENSES INCURRED OR SUSTAINED BY ANYONE RESULTING FROM ANY INTERPRETATION MADE BY ANY OF OUR OFFICERS, AGENTS OR EMPLOYEES. THESE INTERPRETATIONS ARE ALSO SUBJECT TO OUR GENERAL TERMS AND CONDITIONS AS SET OUT IN OUR CURRENT PRICE SCHEDULE.

FILE 103 18-MAR-85 16:32
 DATA ACQUIRED 18-MAR-85 15:41

SP (MV)	ILD (OHMM)	SFLA(OHMM)	CILD(MMHQ)
-100.0	0.0	30.000	1000.0
0.0	0.0	6.0000	0.0
	0.0	30.000	0.0



SP (MV)	ILD (OHMM)	SFLA(OHMM)	CILD(MMHQ)
-100.0	0.0	30.000	1000.0
0.0	0.0	6.0000	0.0
	0.0	30.000	0.0

SENSOR MEASURE POINT TO TOOL ZERO

CBL 43.9 FEET	AMPL 43.9 FEET
TT3 40.1 FEET	TT4 39.1 FEET
TT1 42.9 FEET	TT2 43.9 FEET
CALI 31.8 FEET	SRAT 41.4 FEET
SFL 6.4 FEET	ILD 9.4 FEET
SP 2.5 FEET	ILM 5.7 FEET
TENS 2.5 FEET	SPAR 2.5 FEET
NOIS 35.6 FEET	

PARAMETERS

NAME	VALUE	UNIT	NAME	VALUE	UNIT
MSV1	WF1		DWS	16	
DSIN	5	US	DDEL	200	US
CDTS	140.000		DMCO	512	
DTF	189.000	US/F	DTM	56.0000	MM/F
SBR	1.00000	OHMM	DSEC	5.70000	MMHO
FPHI	SPHI		MSEC	7.00000	MMHO
BS	7.87500	IN	BHS	OPEN	
SPDR	0.100000				