

20 44-08-04



2" = 100'

**DUAL INDUCTION
LATEROLOG
COMPENSATED SONIC
LOG**

COMPANY _____
WELL _____
FIELD _____ STATE _____
COUNTY _____

ART No. 36-009-00285
Location 830.81' WEST & 869.75' NORTH
FROM THE SOUTHWEST CORNER OF:
CBL/NEW/38
P192

Other Services _____

Permanent Datum _____ Elev. _____
Log Measured From _____ Elev. _____
Drilling Measured From _____ Elev. _____

Date 7-29-91
Run No. 001
Depth-Driller 1810'
Depth-Logger 1810'
Btm Log Inter. 1808'

Top Log Inter. _____
Casing-Driller 8.63' @ 507'
Casing-Logger 507'
Bit Size 7.875"

Type Fluid in Hole DRILLING
Dens. Visc. _____
pH Fluid Loss _____
HT Fluid Loss _____
Source of Sample _____
F_w @ Meas. Temp. _____
R_w @ Meas. Temp. _____
Source R_w _____
F_w @ BHT _____
R_w @ BHT _____
Time Since Circ. _____
Main. Freq. Temp. _____
Casing Location _____
Witnessed By J. VANDERMAN

Part Number 26000

Service Ticket No. 68242 API Serial No. _____ PGM Version: _____

Change in Mud Type or Additional Samples		RESISTIVITY/RWA SCALE CHANGES				COMPUTED FROM	
Date	Sample No.	Type Log	Depth	Scale Up Hole	Scale Down Hole	a	m

RESISTIVITY EQUIPMENT DATA							
Run No.	Tool Type and No.	Pad Type	Tool Position	Other			
001	DIT #G-5512		1.5 3.0.				

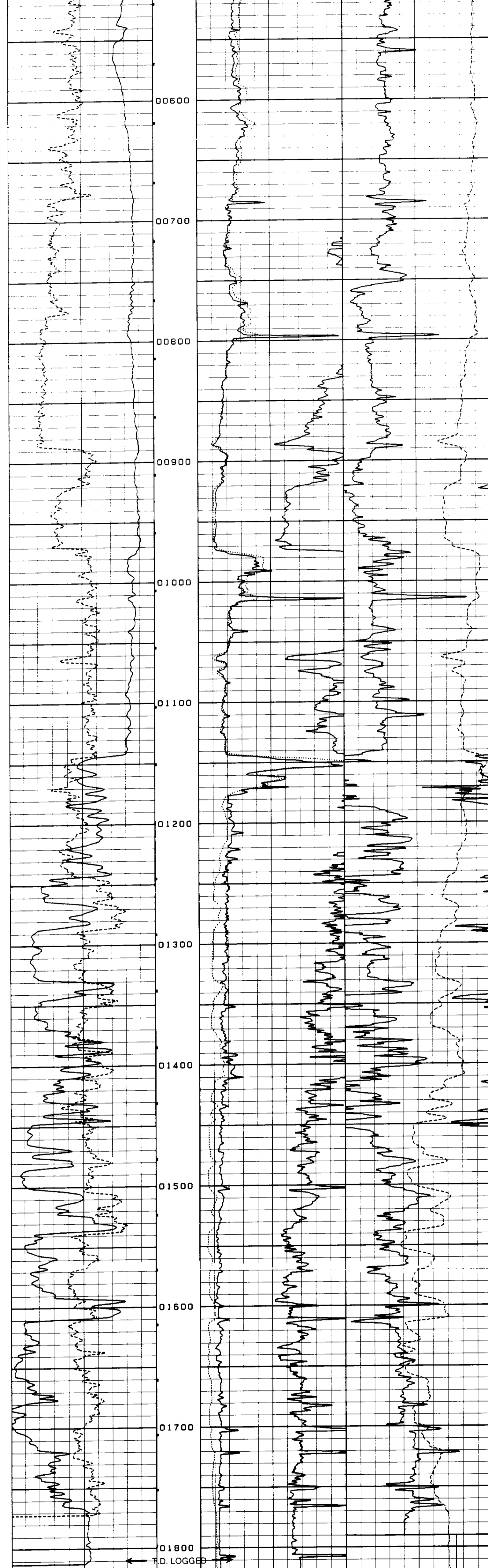
EQUIPMENT DATA							
GAMMA		ACOUSTIC		DENSITY		NEUTRON	
Run No.	Serial No.	Run No.	Serial No.	Run No.	Serial No.	Run No.	Serial No.
001	C-2231						
Model No.	HA	Model No.		Model No.		Model No.	
Diameter	2.28"	No. of Cent.		Diameter		Diameter	
Detector Model No.	NA	Spacing		Log Type		Log Type	
Type	SCM			Source Type		Source Type	
Length	1.5'	LSA	<input type="checkbox"/> Yes <input type="checkbox"/> No	Serial No.		Serial No.	
Distance to Source	NA	FWDA	<input type="checkbox"/> Yes <input type="checkbox"/> No	Strength		Strength	

LOGGING DATA												
Run No.	GENERAL		Speed Ft./Min.	GAMMA Scale		ACOUSTIC Scale		Matrix	DENSITY Scale		NEUTRON Scale	
	From	To		L	R	L	R		L	R	L	R
001	TD	CSC	45	0	150							

REMARKS: RIG: TAYLOR DRILLING

07-29-91 07:42 489.5 68242 0326-01 0 5

0	GR (API)	150	0	R-LL (Ω-M)	30	0	R-LL (Ω-M)	6	175	BCS ΔT	75	0	1000 C-ILD (MMHOS)
0	SP (MV)	100	0	R-ILD (Ω-M)	30	0	R-ILD (Ω-M)	30					

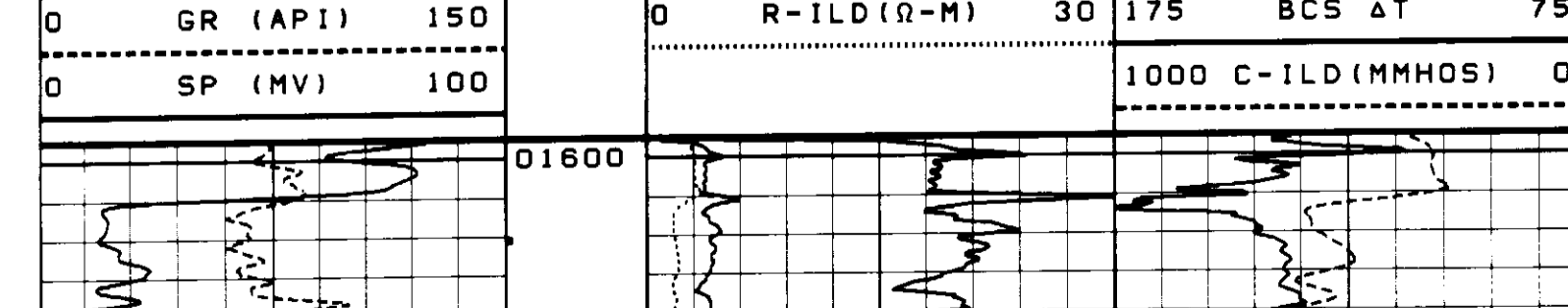


0	GR (API)	150	0	R-LL (Ω-M)	30	0	R-LL (Ω-M)	6	175	BCS ΔT	75	0	1000 C-ILD (MMHOS)
0	SP (MV)	100	0	R-ILD (Ω-M)	30	0	R-ILD (Ω-M)	30					

07-29-91 07:14 1824.0 68242 0308-99 0 5

REPEAT SECTION

0	GR (API)	150	0	R-LL (Ω-M)	30	0	R-LL (Ω-M)	6	175	BCS ΔT	75	0	1000 C-ILD (MMHOS)
0	SP (MV)	100	0	R-ILD (Ω-M)	30	0	R-ILD (Ω-M)	30					



0	GR (API)	150	0	R-LL (Ω-M)	30	0	R-LL (Ω-M)	6	175	BCS ΔT	75	0	1000 C-ILD (MMHOS)
0	SP (MV)	100	0	R-ILD (Ω-M)	30	0	R-ILD (Ω-M)	30					

07-29-91 07:07 1824.0 68242 0308-99 0 4