



COMPANY: ARCO EXPLORATION COMPANY
 WELL: "COLUMBIA COUNTY" 044-21
 FIELD: SUTRY MIST
 STATE: U.S.A.
 LOCATION: 22°N AND 42°W FROM
 SECT: 21
 DEPTH: 21' 6H

RECEIVED - PILD
 M/V 2/11/85
 DATE OF RECEIPT
 RECEIVED BY
 RGE: SM

PERMANENT BATHY: GL
 ELEVATIONS: KPI 880.0 F
 KBI 880.0 F
 KLI 863.6 F
 KLI 863.6 F
 LDB MEASURED FROM PERM. BATHY: KLI 863.6 F
 BRG. MEASURED FROM: KB

DATE: 1 FEB 85
 CONFIDENTIAL
 DEPTH-MILLER: 4500.0 F
 DEPTH-LOGGER: 4500.0 F
 BTR. LOG INTERVAL: 4494.0 F
 LDB LOG INTERVAL: 590.0 F
 CASING-MILLER: 990 F
 CASING-LOGGER: 990 F
 CASING: 9 5/8"
 BIT SIZE: 8 3/4"
 BIT DEPTH: 4500 F

OTHER SERVICES-
 FBC-OM-GR
 HST
 CST
 MCI SERIAL NO:
 36 009 001

PROGRAM:
 TYPE NO:
 26.2
 328
 DEPTH NO:
 4328289

TYPE FLUID IN HOLE: GEL/LIGHT
 DENSITY: 11.6 LB/G
 VISCOSITY: 51.0 S
 PH: 6.0
 FLUID LOSS: 6.1 CC
 SOURCE OF SAMPLE: HUBBIT
 RNF: 2.640 DMMH AT 64.0 DEGF
 RNF: 2.790 DMMH AT 40.0 DEGF
 RNC: 3.590 DMMH AT 40.0 DEGF
 SOURCE RNF/RNC: MEASURED/MEASURED
 RH AT BHT: 1.629 DMMH AT 100. DEGF
 RHF AT BHT: 1.291 DMMH AT 100. DEGF
 RHC AT BHT: 1.716 DMMH AT 100. DEGF

TIME CIRC. STOPPED: 03100 2-5
 TIME LOGGER ON BTH.: 21110 2-6
 MAX. REC. TEMP: 100.0 DEGF
 LOGGING UNIT NO: 0128
 LOGGING UNIT LOC: SACRAMENTO
 RECORDED BY: PILCH
 WITNESSED BY: AMBERSON

REMARKS:
 550 PPM CHLORIDES
 DUAL AND SONIC RUN IN COMBINATION.
 CHE-2 AND FINIS USED FOR SONIC CENTRALIZATION.

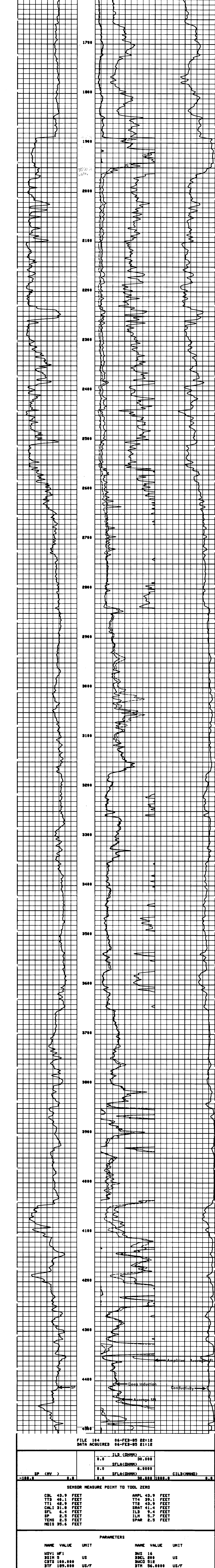
EQUIPMENT NUMBERS-
 BIS-EC 567 DIC-DA 552 MCD-DA 1237 SLS-RC 525
 SLC-FA 1460 IEN-DB 304 SLN-DA 420

ALL INTERPRETATIONS AND OPINIONS BASED ON INFERENCE FROM ELECTRICAL OR OTHER MEASUREMENTS AND WE CANNOT AND DO NOT GUARANTEE THE ACCURACY OR CORRECTNESS OF ANY INTERPRETATIONS AND WE SHALL NOT, EXCEPT IN THE CASE OF GROSS OR WILLFUL NEGLIGENCE ON OUR PART, BE LIABLE OR RESPONSIBLE FOR ANY LOSS, COSTS, DAMAGES OR EXPENSES INCURRED OR SUSTAINED BY ANYONE RESULTING FROM ANY INTERPRETATION MADE BY ANY OF OUR OFFICERS, AGENTS OR EMPLOYEES. THESE INTERPRETATIONS ARE ALSO SUBJECT TO OUR GENERAL TERMS AND CONDITIONS AS SET OUT IN OUR CURRENT PRICE SCHEDULE.

FILE 105 06-FEB-85 22:26
 DATA ACQUIRED 06-FEB-85 22:02

ILR (DMMH)	30.000	CILR (MMH)	0.0
SFLA (DMMH)	6.0000		
SFLA (DMMH)	30.000	1000.0	0.0

FILE 104 06-FEB-85 22:10
 DATA ACQUIRED 06-FEB-85 22:02



FILE 104 06-FEB-85 22:12
 DATA ACQUIRED 06-FEB-85 22:12

ILR (DMMH)	30.000	CILR (MMH)	0.0
SFLA (DMMH)	6.0000		
SFLA (DMMH)	30.000	1000.0	0.0

SENSOR MEASURE POINT TO TOOL ZERO

CBL 43.9 FEET	ANPL 43.9 FEET
TT1 49.1 FEET	TTA 39.1 FEET
TT2 43.9 FEET	SRAT 41.4 FEET
CALI 31.0 FEET	ILD 9.4 FEET
SFL 6.4 FEET	ILM 5.7 FEET
SP 2.5 FEET	SPAR 2.5 FEET
TEHS 2.5 FEET	
HOIS 35.6 FEET	

PARAMETERS

NAME	VALUE	UNIT	NAME	VALUE	UNIT
MSV1	MF1		BMS	16	
BSIM	5	US	BACL	200	US
CBTS	100.000		BWCD	512	
BTF	109.000	US/F	BTH	56.0000	US/F
SDR	1.00000	DMMH	BSEC	7.60000	MMH
BHS	OPEN	F	BSEC	7.40000	MMH
BQ	0.0	F	BS	0.75000	IN
SP	WCH				