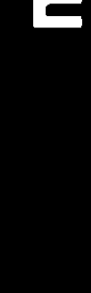


694

Schlumberger
2" DUAL INDUCTION SFL GR



COMPANY: ARCO EXPLORATION AND TECH.
WELL: CROWN ZELLERBACH 23-15
FIELD: PITTSBURG
COUNTY: COLUMBIA
STATE: OREGON
NATION: USA
LOCATION: DF W 1/4 CDR
SEC: 15 TWP: 5N RGE: 5E

PERMANENT DATUM: SL
ELEV. MEASUREMENT: 750.9 F
LOG MEASURED FROM: 750.9 F
DRUG. MEASURED FROM: 720.9 F

DATE: 7 DEC 85
RUN NO: 1

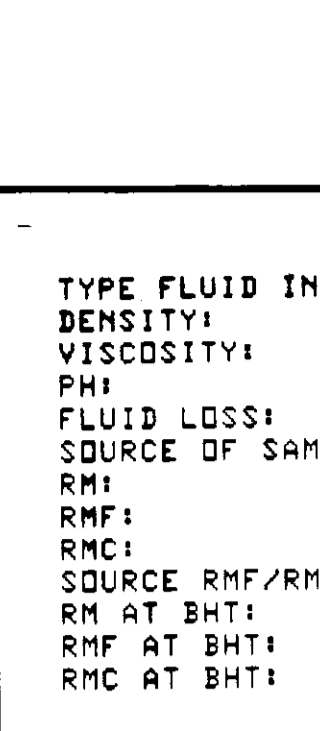
DEPTH-DRILLER: 2270.0 F
DEPTH-LOGGER: 2251.0 F
BIT. LOG INTERVAL: 2245.0 F
TOP LOG INTERVAL: 420.0 F
CASING-DRILLER: 420.0 F
CASING-LOGGER: 420.0 F
CASING: 9 5/8
MEIGHT: 8 3/4
BIT SIZE: 8 3/4

PERMANENT DATUM: SL
ELEVATIONS: SL 750.9 F
ELEVATIONS: NB 740.9 F
ELEVATIONS: DL 720.9 F

PROGRAM: TAPED
SERIAL NO: 2812A
SERVICE ORDER NO: 436363

OTHER SERVICES-
FDC
HDI
SILT

TYPE FLUID IN HOLE: MULTI DESCO
DENSITY: 9.00 LB/G
VISCOSITY: 40.0 S
PHI: 8.5
FLUID LOSS: 8.0 C3
SOURCE OF SAMPLE: FLOWLINE
RM: 2.330 DHMM AT 60.0 DEGF
RMF: 2.950 DHMM AT 44.0 DEGF
RMC: 3.090 DHMM AT 49.0 DEGF
SOURCE RMF/RMC: MEAS/MEAS
RM AT BHT: 1.609 DHMM AT 90.0 DEGF
RMF AT BHT: 1.551 DHMM AT 90.0 DEGF
RMC AT BHT: 1.784 DHMM AT 90.0 DEGF



TIME CIRC. STOPPED: 20:00 12/6
TIME LOGGER ON BTM.: 0230 12/7
MAX. REC. TEMP: 90.0 DEGF
LOGGING UNIT NO: 8126
LOGGING UNIT LOC: SACRAMENTO
RECORDED BY: KUNKLER
WITNESSED BY: ANDERSON

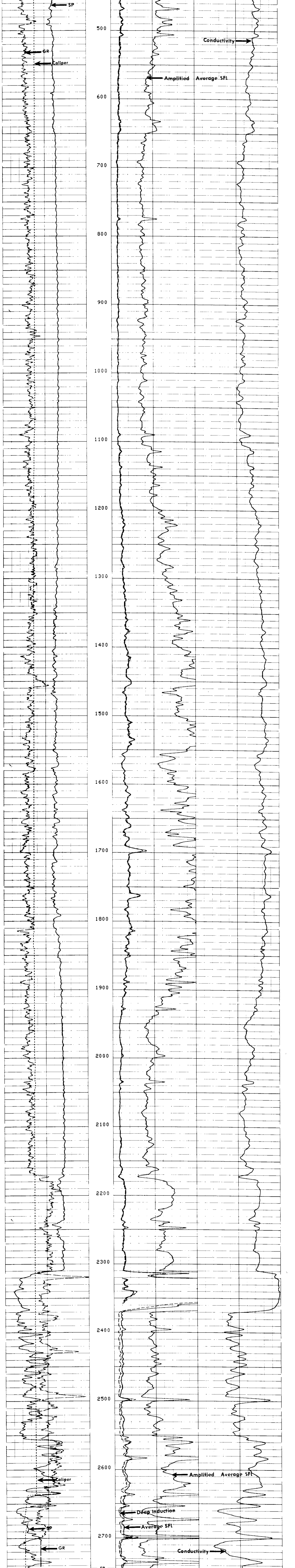
REMARKS:
CHLORIDES: 300 PPM
1.5 IN. STANDOFFS USED ON DIL
2 CHEZ'S USED ON SONIC
REPEAT TAKEN OVER ZONE OF INTEREST AT 2300'.

EQUIPMENT NUMBERS-
DIS 1422 DIC 1149 SLS 375 SLC 1259
MCD 1186 SGT 466

ALL INTERPRETATIONS ARE OPINIONS BASED ON INFERENCES FROM ELECTRICAL OR OTHER MEASUREMENTS AND WE CANNOT, AND DO NOT GUARANTEE THE ACCURACY OR CORRECTNESS OF ANY INTERPRETATIONS, AND WE SHALL NOT, EXCEPT IN THE CASE OF GROSS OR WILLFUL NEGLIGENCE ON OUR PART, BE LIABLE OR RESPONSIBLE FOR ANY LOSS, COSTS, DAMAGES OR EXPENSES INCURRED OR SUSTAINED BY ANYONE RESULTING FROM ANY INTERPRETATION MADE BY ANY OF OUR OFFICERS, AGENTS OR EMPLOYEES. THESE INTERPRETATIONS ARE ALSO SUBJECT TO OUR GENERAL TERMS AND CONDITIONS AS SET OUT IN OUR CURRENT PRICE SCHEDULE.

CP 28.2A FILE 13 07-DEC-85 03:47
DATA ACQUIRED NA

CALC(IN) 6.0000 16.000
GR (GAPI) 0.0 150.00
SP (MV) -100.0 0.0
ILD (DHMM) 0.0 30.000
SFLA(DHMM) 0.0 6.0000
SFLA(DHMM) 0.0 30.000 1000.0
CILD(MMHD) 0.0



CP 28.2A FILE 9 07-DEC-85 03:54
DATA ACQUIRED 07-DEC-85 02:29

CALC(IN) 6.0000 16.000
GR (GAPI) 0.0 150.00
SP (MV) -100.0 0.0
ILD (DHMM) 0.0 30.000
SFLA(DHMM) 0.0 6.0000
SFLA(DHMM) 0.0 30.000 1000.0
CILD(MMHD) 0.0

SENSOR MEASURE POINT TO TOOL ZERO

| | | | | | |
|------|------|------|------|------|------|
| SRAT | 34.6 | FEET | AMPL | 37.1 | FEET |
| TT1 | 36.1 | FEET | CBL | 37.1 | FEET |
| TT2 | 39.3 | FEET | TT2 | 37.1 | FEET |
| TT3 | 37.1 | FEET | TT4 | 37.1 | FEET |
| SLTT | 37.1 | FEET | TT | 37.1 | FEET |
| GR | 64.1 | FEET | SCBL | 37.1 | FEET |
| ILD | 9.4 | FEET | CALC | 37.1 | FEET |
| SFL | 9.4 | FEET | ILM | 37.1 | FEET |
| SPAR | 2.5 | FEET | SP | 37.1 | FEET |
| NOIS | 2.5 | FEET | TENS | 37.1 | FEET |

PARAMETERS

| NAME | VALUE | UNIT | NAME | VALUE | UNIT |
|------|---------|------|------|---------|------|
| CDTS | 100.000 | | SPFS | R-H | |
| DTF | 189.000 | US/F | DTM | 56.0000 | US/F |
| DSIN | 5 | US | DDEL | 200 | US |
| WMUD | 8.00000 | LB/G | DSEC | 512 | |
| SBR | 1.00000 | DHMM | DSEC | 4.50000 | MMHG |
| BHS | OPEN | | MSEC | 4.50000 | MMHG |
| DO | 0.0 | F | BS | 8.00000 | IN |
| PP | NORM | | | | |

TAPE NOT MADE