

BHC ACOUSTILLOG®
GAMMA RAY

FILE NO. 2926

COMPANY RRCO OIL & GAS

WELL CEX (C. E. R.) 23-16-64

FIELD MIST

COUNTY COLUMBIA

STATE OREGON

API NO. 2-100

LOCATION: 1644 B. NORTH & 2110 4' EAST OF THE
SOUTHWEST CORNER OF:

SECT 16 T1P2N RGE 4N

PERMITS: K. B. 10 FT. ABOVE P.D.

LOGGING MEASURED FROM K. B.

DRILLING MEASURED FROM K. B.

DATE 10/25/88

RUN 1

SERVICE ORDER 159110

DEPTH-DRILLER 1775

DEPTH-LOGGER 1773

BOTTOM LOGGED INTERVAL 1144

TOP LOGGED INTERVAL 817

CASING - DRILLER 9 5/8" Ø 820'

CASING - LOGGER 8 1/2" Ø 817'

BLT SIZE Ø 1 1/2" E - Z HUD

TYPE FLUID IN HOLE 10.0 45

DENSITY / VISCOSITY 9.0 5.0

PH / FLUID LOSS FLOWLINE

SOURCE OF SPH/MT
RH RT MEAS. 11MP Ø 65
RMC RT MEAS. 11MP Ø 65
RMC RT MEAS. 11MP 4.91 Ø 65
SOURCE OF RHT / HHT
RT RT MEAS. 11MP Ø 65
RT RT MEAS. 11MP Ø 65
TIME SINCE CIRCULATION 2 HRS.
MAX. REC. TEMP. IN C. 1
EQUIP. NO. / 100
LOGS RUN 1 SURVEY NO. 1083
RECORDED BY J. H. THOMPSON

IN MAKING INTERPRETATIONS OF LOGS, OUR EMPLOYEES WILL GIVE CUSTOMER THE BEST FIT OF THE LOG BEST AVAILABLE, BUT SINCE WE CAN NOT GUARANTEE THE ACCURACY OF OUR INTERPRETATIONS, WE CANNOT BE HELD LIABLE OR RESPONSIBLE FOR ANY LOSS, COST, DAMAGES, OR EXPENSES WHATSOEVER INCURRED OR SUSTAINED BY THE CUSTOMER RESULTING FROM ANY INTERPRETATION MADE BY ANY OF OUR EMPLOYEES.

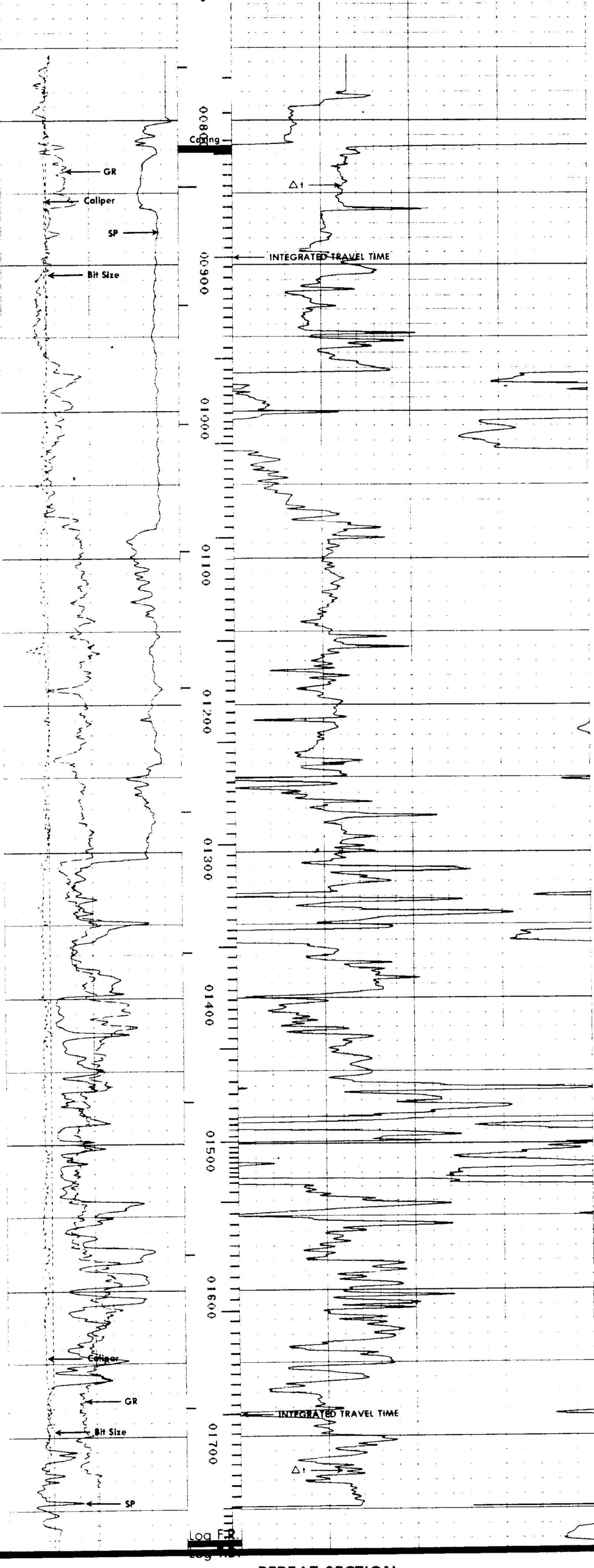
FINAL PRINT

FOUR HERE

REMARKS RUN (1)
VOLUME COMPUTED FOR 7" CASING

EQUIPMENT DATA

RUN	TRIP	TOOL	SERIAL NO.	SERIES NO.	POSITION
1	1	DIFL	33304	1503XA	1.5" S.O.
1	1	AC	79726	1609-1603	CENT.
1	1	GR	60484	1309XA	CENT.
1	1	CAL	79092	4209XA	CENT.



REPEAT SECTION

