

SCANNED

COMPANY: REICHHOLD ENERGY CORPORATION
 WELL: C2 31-16
 FIELD: PITTSBURGH
 COUNTY: COLUMBIA
 STATE: OREGON
 NATION: USA
 LOCATION: 948.63 'S & 2479.46 'W
 SECT: 16
 DEPT: DE CDR
 TAPI: SN
 RGT: 4M

PERMANENT DATUM: GL
 ELEV. OF PERM. DATUM: 838.2 F
 LOG MEASURED FROM: KB
 11.4 F ABOVE PERM. DATUM
 DRLG. MEASURED FROM: KB
 GLI: 838.2 F

DATE: 26 JUL 85
 RUN NO: 1

DEPTH-DRILLER: 2867.0 F
 DEPTH-LOGGER: 2860.0 F
 BTP, LOG INTERVAL: 2894.0 F
 TOP LOG INTERVAL: 408.0 F
 CASING-DRILLER: 403 F
 CASING-LOGGER: 408 F
 CASING: 8 5/8
 BIT SIZE: 7 7/8 F
 DEPTH: 2867 F

OTHER SERVICES-
 FDC
 HDT
 SLT

PROGRAM
 TAPE NO: 26.2
 SERVICE: DRU45338
 453338

TYPE FLUID IN HOLE: GELL LIGNO
 DENSITY: 10.0 LB/G
 VISCOSITY: 56.0 S
 PH: 9.0
 FLUID LOSS: 6.2 C3
 SOURCE OF SAMPLE: FLOWLINE
 RM: 1.720 OHMM AT 80.0 DEGF
 RMF: 1.370 OHMM AT 81.0 DEGF
 RMC: 1.580 OHMM AT 85.0 DEGF
 SOURCE RMF/RMC: MEAS/MEAS
 RM AT BHT: 1.398 OHMM AT 100. DEGF
 RMF AT BHT: 1.126 OHMM AT 100. DEGF
 RMC AT BHT: 1.358 OHMM AT 100. DEGF

TIME CIRC. STOPPED: 0530 7/26
 TIME LOGGER ON BTM.: 8:40 7/26

MAX. REC. TEMP: 100.0 DEGF

LOGGING UNIT NO: 8126
 LOGGING UNIT LOC: SACRAMENTO
 RECORDED BY: KUNKLER
 WITNESSED BY: THOMAS

REMARKS:
 CENTRALIZERS AND STANDOFFS USED
 DIL AND SLT RUN IN COMBO

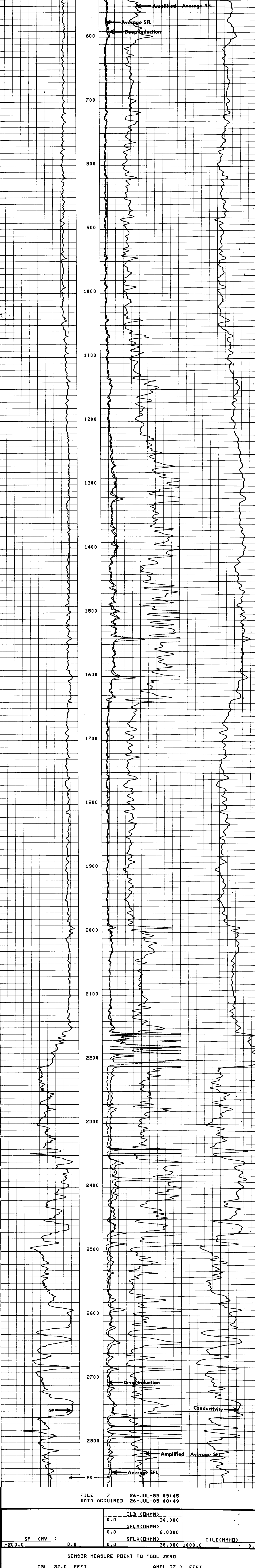
EQUIPMENT NUMBERS-
 DIS 1422 DIC 1149 SLS 1082 SLC 1259
 MCD 1186

ALL INTERPRETATIONS ARE OPINIONS BASED ON INFERENCES FROM ELECTRICAL OR OTHER MEASUREMENTS AND WE CANNOT, AND DO NOT GUARANTEE THE ACCURACY OR CORRECTNESS OF ANY INTERPRETATIONS, AND WE SHALL NOT, EXCEPT IN THE CASE OF GROSS OR WILLFUL NEGLIGENCE ON OUR PART, BE LIABLE OR RESPONSIBLE FOR ANY LOSS, COSTS, DAMAGES OR EXPENSES INCURRED OR SUSTAINED BY ANYONE RESULTING FROM ANY INTERPRETATION MADE BY ANY OF OUR OFFICERS, AGENTS OR EMPLOYEES. THESE INTERPRETATIONS ARE ALSO SUBJECT TO OUR GENERAL TERMS AND CONDITIONS AS SET OUT IN OUR CURRENT PRICE SCHEDULE.

FILE 7 26-JUL-85 10:26
 DATA ACQUIRED 26-JUL-85 09:35

| | | | |
|-------------|--------|-------------|-----|
| ILD (OHMM) | 30.000 | CILD (MMHO) | 0.0 |
| SFLA (OHMM) | 6.0000 | | |
| SFLA (OHMM) | 30.000 | 1000.0 | 0.0 |

SP (MV) -200.0 0.0



FILE 7 26-JUL-85 09:45
 DATA ACQUIRED 26-JUL-85 08:49

| | | | |
|-------------|--------|-------------|-----|
| ILD (OHMM) | 30.000 | CILD (MMHO) | 0.0 |
| SFLA (OHMM) | 6.0000 | | |
| SFLA (OHMM) | 30.000 | 1000.0 | 0.0 |

SP (MV) -200.0 0.0

SENSOR MEASURE POINT TO TOOL ZERO

| | | | | | |
|------|------|------|------|------|------|
| CBL | 37.0 | FEET | AMPL | 37.0 | FEET |
| TT3 | 33.3 | FEET | TT4 | 32.3 | FEET |
| TT1 | 36.0 | FEET | TT2 | 37.0 | FEET |
| CALI | 56.1 | FEET | SRAT | 34.5 | FEET |
| SFL | 6.4 | FEET | ILD | 9.4 | FEET |
| SP | 2.5 | FEET | ILM | 5.7 | FEET |
| TENS | 2.5 | FEET | SPAR | 2.5 | FEET |
| NDIS | 28.8 | FEET | | | |

PARAMETERS

| | | | | | |
|------|---------|------|------|---------|------|
| NAME | VALUE | UNIT | NAME | VALUE | UNIT |
| MSV1 | WF1 | | DWS | 16 | |
| DSIN | 5 | US | DDEL | 200 | US |
| CDTS | 100.000 | | DWCD | 512 | |
| DTF | 189.000 | US/F | DTM | 56.0000 | US/F |
| SBR | 1.00000 | OHMM | DSEC | 4.30000 | MMHO |
| FPHI | SPHI | | MSEC | 6.20000 | MMHO |
| BS | 7.87500 | IN | BHS | DPEN | |
| PP | NDRM | | DD | 0.0 | F |

TAPE NOT MADE