



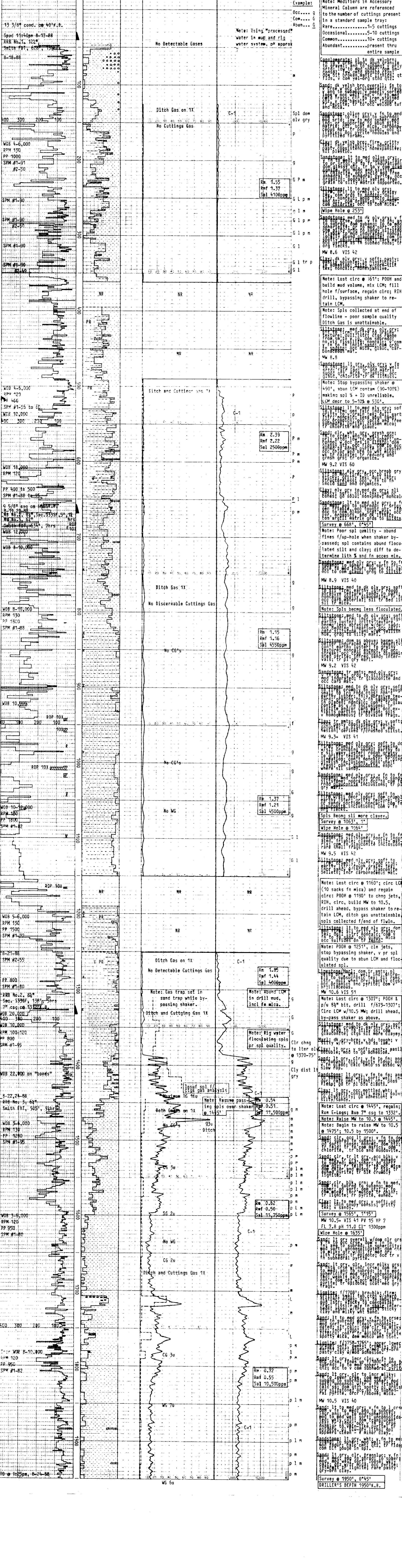
WELL LOGGING, INC.

COMPANY ARCO OIL AND GAS CO.
WELL CFW # 12-15-64
FIELD Mist
LOCATION 1999'S and 350'E from the NW corner of section 15, T5N-R5W
COUNTY, STATE Columbia, Oregon
API WELL INDEX NO.
ELEVATION 1363' C.L. 1373' K.B.
DATES FROM 8-17-88 TO 8-24-88
DEPTHS FROM 45' K.B. TO 1950' K.B.
SPUD DATE 8-17-88
DRILLING CONTRACTOR Paul Graham, Rig #4
MUD COMPANY Baroid
LOGGING GEOLOGISTS John Day Jim Eastes Dave Deatherage

Table with 2 columns: ABBREVIATIONS and CASING RECORD. Includes rows for NB BIT, RRB RETURN BIT, RTB RE-TIP BIT, etc.

Legend table with symbols for SAND/SANDSTONE, CLAY, LIMESTONE, TUFF, LIGNITE, SHALE, DIATOMITE, DOLOMITE, FOSSIL, GLAUCONITE, SILTSTONE, CONGLOMERATE, BASALT, MICA, PYRITE.

OIL: BASED ON LIVE OIL IN UNWASHED CUTTINGS AND PERCENT STAINING AND FLUORESCENCE OF WASHED SAMPLES.



DRILLING DATA: 13 3/8" cond. to 40' K.B. Spud 11:40pm 8-17-88. Includes WOB, RPM, PP, SPM values for various depths.

LITHOLOGY: Column with symbols representing different rock types such as sandstone, shale, siltstone, etc.

OIL, GAS - UNITS, CHROMATOGRAPH - PPM: Columns showing gas analysis results and chromatogram data.

REMARKS: Detailed lithological descriptions and notes for each depth interval, including mineralogy and survey data.