



**DUAL INDUCTION - SONIC
TRUE VERTICAL DEPTH**

COMPANY	Nahama & Weagent Energy Company
WELL	"Golden" Everson #41-35-75
FIELD	Mist
COUNTY	Columbia
STATE	Oregon
Other Services:	
COUNTY	Columbia
FIELD	Mist
WELL	"Golden" Everson #41-35-75
LOCATION	912.87'S AND 1267.93'W
COMPANY	Nahama & Weagent Energy Company
FROM NE CORNER	
API SERIAL NO.	36 009 00308
EXV.	15217 F
LOG MEASURED FROM	KB
LOG MEASURED TO	KB
DATE	22 JUN 1993
DRILLING MEASURED FROM	KB
DRILLING MEASURED TO	KB
DATE	22 JUN 1993
RUN NO.	ONE
DIPHT DRIFTER	33310 F
DIPHT LOGGER (S&H)	33270 F
BIT LOG INTERVAL	33270 F
TOP LOG INTERVAL	3020 F
CALIBRATION	3020 F
CALIBRATION	3020 F
DATE	22 JUN 1993
LOGGED BY	SCHEMANN
RECORDED BY	SCHEMANN
REVISION	NO. 11/03

The well name, location and borehole reference data were furnished by the customer.

All interpretations are opinions based on inferences from electrical or other measurements and we cannot, and do not guarantee the accuracy or correctness of any interpretation, and we shall not, except in the case of gross or willful negligence on our part, be liable or responsible for any loss, costs, damages or expenses incurred or sustained by anyone resulting from any interpretation made by any of our officers, agents or employees. These interpretations are also subject to Clause 4 of our General Terms and Conditions as set out in our current Price Schedule.

Run No.	ONE
Service Order No.	024453
Drilling Fluid Level	5.0 F
Salinity	200.0 PPM
Rmt @ BHT	3.984 CHMM @ 86.0 DEGF
Rmo @ BHT	2.578 CHMM @ 86.0 DEGF
Logging Speed	3600.0 F/HR

Tool Number 1	DI6-EC 1342
Tool Number 2	DIC-DA 1386
Tool Number 3	MCD-DA 668
Tool Number 4	SLC-MA 88
Tool Number 5	SLS-WC 1336
Tool Number 6	SGC-JC 3206
Tool Number 7	IEM-8D 304
Tool Number 8	SLM-DA 443
Tool Number 9	NLM-BC 418
Tool Number 10	
Tool Number 11	
Tool Number 12	

REMARKS:

INCLINOMETRY LIST

TIE DEPTH	MEAS. DEPTH	DEVI	TVD
502.0 FEET	585.0 FEET	1.25 DEG	585.0 FEET
	895.0 FEET	1.25 DEG	894.9 FEET
	1021.0 FEET	1.75 DEG	1020.9 FEET
	1083.0 FEET	3.25 DEG	1082.9 FEET
	1145.0 FEET	5.00 DEG	1144.7 FEET
	1177.0 FEET	6.00 DEG	1176.6 FEET
	1240.0 FEET	8.00 DEG	1239.1 FEET
	1406.0 FEET	8.00 DEG	1403.4 FEET
	1530.0 FEET	8.50 DEG	1526.1 FEET
	1724.0 FEET	8.50 DEG	1718.0 FEET
	1910.0 FEET	7.75 DEG	1902.1 FEET
	2039.0 FEET	7.50 DEG	2024.0 FEET
	2251.0 FEET	7.25 DEG	2249.2 FEET
	2500.0 FEET	6.25 DEG	2478.5 FEET
	2807.0 FEET	5.75 DEG	2829.8 FEET
	2872.0 FEET	5.75 DEG	2857.5 FEET
	3331.0 FEET	5.00 DEG	3314.5 FEET

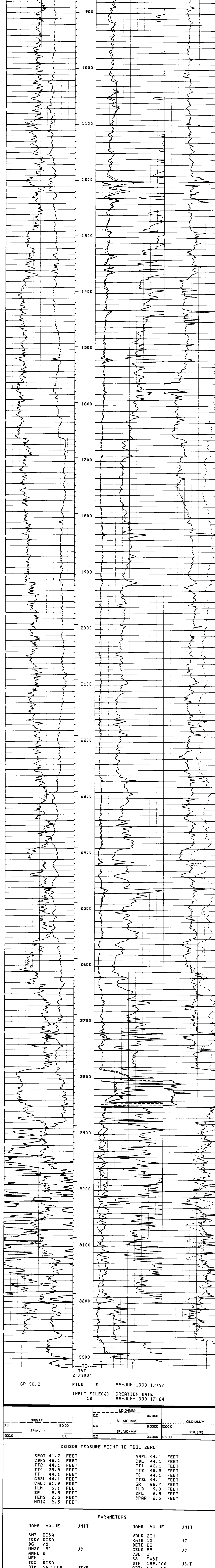
CP 38.2 FILE 0 22-JUN-1993 17:17

MAIN LOG

GR(GAPI)	0.0	LD(CHMM)	0.0	30.000
SP(MV)	0.0	SFLA(CHMM)	0.0	6.0000
			1000.0	CILD(MM/M)
			30.000	176.00
				DT(US/F)
				76.000

CP 38.2 FILE 2 22-JUN-1993 17:42

INPUT FILE(S) 12 CREATION DATE 22-JUN-1993 17:24



CP 38.2 FILE 2 22-JUN-1993 17:37

INPUT FILE(S) 12 CREATION DATE 22-JUN-1993 17:24

GR(GAPI)	0.0	LD(CHMM)	0.0	30.000
SP(MV)	0.0	SFLA(CHMM)	0.0	6.0000
			1000.0	CILD(MM/M)
			30.000	176.00
				DT(US/F)
				76.000

SENSOR MEASURE POINT TO TOOL ZERO

SRAT	41.7 FEET	AMPL	44.1 FEET
CBFS	43.1 FEET	CBL	44.1 FEET
TT2	44.1 FEET	TT1	43.1 FEET
TT4	39.3 FEET	TT3	40.9 FEET
TT	44.1 FEET	TT0	44.1 FEET
CBSL	44.1 FEET	TTSL	44.1 FEET
CAL1	31.9 FEET	GR	62.7 FEET
ILM	6.1 FEET	ILD	9.9 FEET
SP	2.5 FEET	SFL	6.8 FEET
TENS	2.5 FEET	SPAR	2.5 FEET
NDIS	2.5 FEET		

PARAMETERS

NAME	VALUE	UNIT	NAME	VALUE	UNIT
SMB	DISA		VDLR	2IN	
TOCA	DISA		RATE	15	HZ
DG	75		DETE	E2	
NMSG	180	US	CBLG	35	US
AMPL	1		CBL	UT	
WFM	1		SS	FAST	
TOD	DISA		DTF	189.000	US/F
DTM	56.0000	US/F	CDTS	100.000	
SFHS	R-H		PP	NDRH	
DD	0.0	F	MMUD	9.40000	LB/G
MSEC	7.90000	MM/M	SBR	1.00000	CHMM
DSEC	6.40000	MM/M	FCD	4.50000	IN
NJCT	GSRY		FPHI	SPHI	
DMCO	512		DSIN	5	US
DDCL	200	US	SPVD	0.0	F
SINT	10.0000	M	BS	7.87500	IN
BHS	OPEN				

COMPANY Nahama & Weagent Energy Company

WELL "Golden" Everson #41-35-75

FIELD Mist

COUNTY Columbia

STAT Oregon

8SCHL. FR 3321.0 F

8SCHL. TD 3327.0 F

DRLR. TD 3331.0 F

Elev. KB 1532.2 F

DF

QL 1521.7 F

**DUAL INDUCTION - SONIC
TRUE VERTICAL DEPTH**