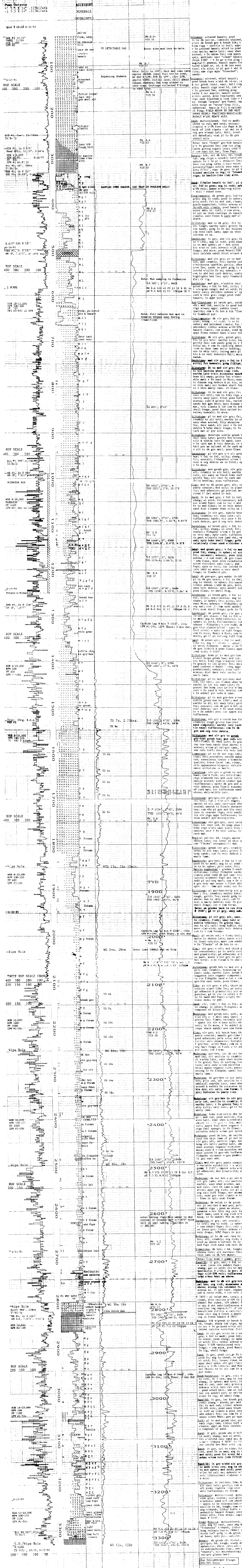


HORIZON

WELL LOGGING

COMPANY: NAHAMA & WEAGANT ENERGY CO.
 WELL: "GOLDEN" 126333
 LOCATION: 912.87'S and 1263.33'W of Sec. 35, 17N, R5W, 14E
 ELEVATION: 1521.74' G.L.
 FIELD: COLUMBIA
 COUNTY: MISSOURI
 API NUMBER: # 36-009-00308
 SPUD DATE: 6-14-93
 LOGGING DATES: 6-14-93 to 6-19-93
 LOGGING DEPTH: 40' K.B. to 3331'
 GEOLOGIST: JEFF VAUGHAN
 COMPANY MAN: ROB LUCAS
 CONTRACTOR: Taylor Drilling
 RIG:
 LOGGING GEOLOGISTS: Jim Eastes, Dan Corcoran
 BIT SIZE: 12.25" to 10.25"
 7.875" to 3331"
 CASING: 20" at 502'

ABBREVIATIONS		SYMBOLS	
CO	Circulate Out	PEBBLES >2mm	□
LAT	Logged After Trip	SAND	□
LAS	Logged After Survey	SANDSTONE	□
CG	Connected Gas	SILTSTONE	□
KC	Kelly Cut Gas	MUDSTONE	□
NG	Nisiper Gas	SHALE	□
TG	Trip Gas	MARL	□
SG	Survey Gas	CLAY	□
NR	Nisiper Run	CHERT	□
CORE INTERVAL		DOLOSTONE	□
TRIP (100.000's full scale)		LIMESTONE	□
		VOLCANICS	□
		TUFF	□
		BASALT	□



DRILL RATE	LITHOLOGY	MIN	GASES	CHROMATOGRAPH	REMARKS
ROP			DITCH GAS OFFSCALE CUTTINGS GAS OFFSCALE	METHANE ETHANE PROPANE BUTANE	DESCRIPTIONS SURVEYS MUD SEPARATORS MISCELLANEOUS
100K			20 40 60 80	100 1000 10000 100K	