

WELL CADENZA 34-1

COMPANY REICHOLD ENERGY CORP.

AREA MIST

LOCATION 651.83'N & 788.42'E OF 8 CNT
Sec 1; 16N; R5W W6&M

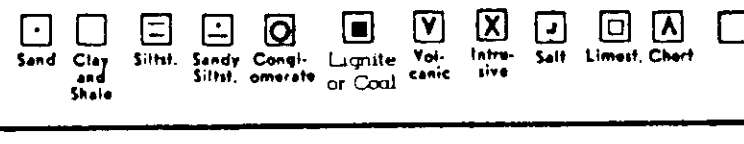
COUNTY, STATE COLUMBIA, OREGON

- W E G E -

WESTERN GEO-ENGINEERS

"A SERVICE TO THE OIL AND GAS INDUSTRY"

LITHOLOGY SYMBOLS



REMARKS

WELL ELEV. GL. 1166.84'
KB. 1178.34'
SALINITY IN PPM CL-
FILTRATE IN CC/30 MIN.
GAS TRAP AGITATOR TYPE
MUD LIGNOSULFONATE
(BARIOD)
TAYLOR DRILLING RIG #5

CASING

7" TO 634'
TO

MUD DATA

W WEIGHT
V VISCOSITY
F FILTRATE
FC FILTER CAKE
SD SAND IN %

LEGEND

S SALINITY
R RESISTIVITY
RF FILTRATE RESISTIVITY
BIT DATA
NB NEW BIT
RRB RERUN BIT

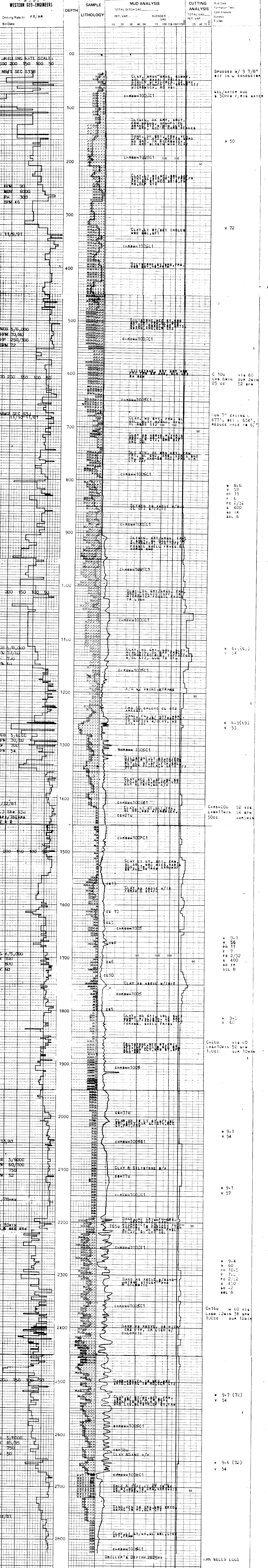
OTHER DATA

CB CORE BIT
WLCB WIRE LINE CB
TC TRIP GAS
CG CONNECTION GAS
C CARBIDE GAS

CR CIRCULATE RETURNS

NR NO RETURN
DR DRILL STEM TEST
DST INTERVAL
CORE INTERVAL

DATE 11/6/81 TO 11-14-81 DEPTH 37' TO 2825' ENGINEERS HANDEE



REICHOLD ENERGY CORP. MIST, OR Sec 1; 16N; R5W W6&M CADENZA 34-1