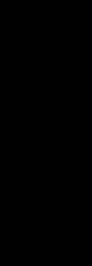


5/11/83

DUWL INDUCTION SFL 2'



COMPANY: DIAMOND SHAMROCK CORPORATION

WELL: CLATSOP COUNTY 93-11

FIELD: WEST MIST

COUNTY: CLATSOP

STATE: OREGON

LOCATION: 1898' N & 1845' W

SEC: 11

PERMANENT DATUM: GL

ELEV. OF PERM. DATUM: 928.0

LOG MEASURED FROM: KB

DRLG. MEASURED FROM: KB

DATE: 1 JUN 1983

DEPTH-DRILLER: 4223.0

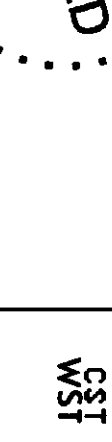
DEPTH-LOG INTERVAL: 4223.0

CASING-DRILLER: 1083.0

CASING-LOGGER: 9.683

BIT SIZE: 8.25

BIT DEPTH: 4223.0



OTHER SERVICES-
FAC
FHT
MST

PROGRAM
TYPE: 4
SERIES: 4
SERVICE: 4
DATE: 08/25/84

TYPE FLUID IN HOLE: KCL POLYMER
 DENSITY: 10.0 LB/G
 VISCOSITY: 45.0 S
 PH: 7.5
 FLUID LOSS: 6.8 C3
 SOURCE OF SAMPLE: CIRC
 RH: 0.170 DHMM AT 80.0 DEGF
 RMF: 0.164 DHMM AT 62.0 DEGF
 RMC: 0.533 DHMM AT 62.0 DEGF
 SOURCE RMF/RMC: MEAS. /MEAS.
 RM AT BHT: 0.118 DHMM AT 118. DEGF
 RMF AT BHT: 0.090 DHMM AT 118. DEGF
 RMC AT BHT: 0.294 DHMM AT 118. DEGF

TIME CIRC. STOPPED: 1300
 TIME LOGGER DN BTH.: 1650

MAX. REC. TEMP: 118.0 DEGF

LOGGING UNIT NO: 8128
 LOGGING UNIT LDC: SACRAMENTO
 RECORDED BY: ANDERSEN
 WITNESSED BY: SEELING

REMARKS:

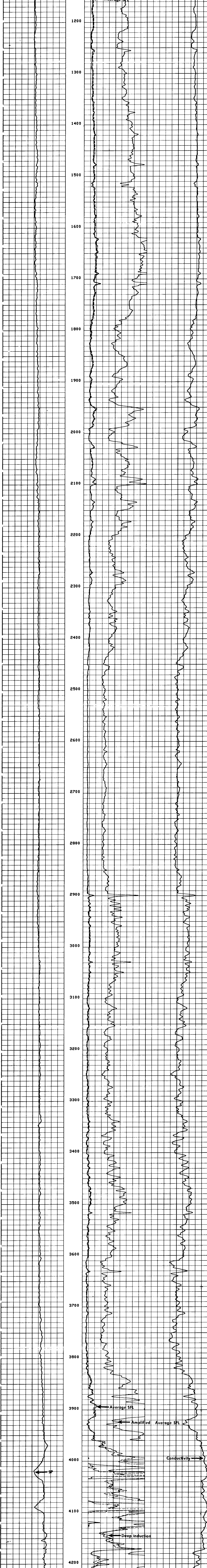
EQUIPMENT NUMBERS-

IS 1422 ISC 47 SLM 383 IEM 686
 SLS 1082 SLC 1589 MCD 663

ALL INTERPRETATIONS ARE OPINIONS BASED ON INFERENCES FROM ELECTRICAL OR OTHER MEASUREMENTS AND WE CANNOT, AND DO NOT GUARANTEE THE ACCURACY OR CORRECTNESS OF ANY INTERPRETATIONS, AND WE SHALL NOT, EXCEPT IN THE CASE OF GROSS OR WILLFUL NEGLIGENCE ON OUR PART, BE LIABLE OR RESPONSIBLE FOR ANY LOSS, COSTS, DAMAGES OR EXPENSES INCURRED OR SUSTAINED BY ANYONE RESULTING FROM ANY INTERPRETATION MADE BY ANY OF OUR OFFICERS, AGENTS OR EMPLOYEES. THESE INTERPRETATIONS ARE ALSO SUBJECT TO OUR GENERAL TERMS AND CONDITIONS AS SET OUT IN OUR CURRENT PRICE SCHEDULE.

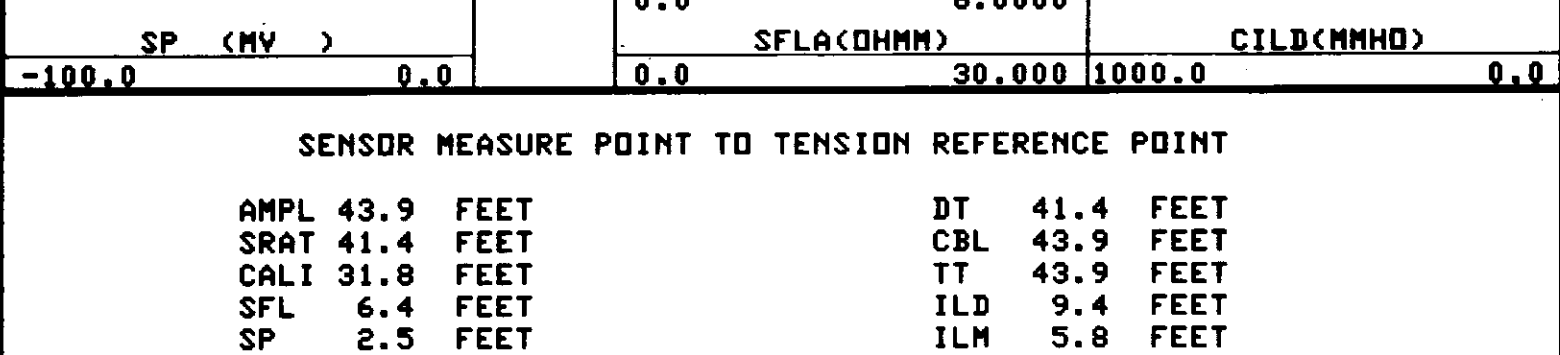
FILE

103



FILE

101



SENSOR MEASURE POINT TO TENSION REFERENCE POINT

AMPL 43.9 FEET	DT 41.4 FEET
SRAT 41.4 FEET	CBL 43.9 FEET
CALI 31.8 FEET	TT 43.9 FEET
SFL 6.4 FEET	ILD 9.4 FEET
SP 2.5 FEET	ILM 5.8 FEET
TENS .0 FEET	SPAR 2.5 FEET
NDIS 35.7 FEET	

PARAMETERS

NAME	VALUE	UNIT	NAME	VALUE	UNIT
CDTS	140.000		BS	8.75000	IN
DTF	189.000	US/F	DTM	56.0000	US/F
SBR	1.00000	DHMM	DSEC	4.40000	MMHO
FPHI	SPHI		MSEC	6.60000	MMHO
DD	0.0	F	BMS	OPEN	

COMPANY: DIAMOND SHAMROCK CORPORATION
 WELL: CLATSOP COUNTY NO. 33-11
 FIELD: WEST MIST
 COUNTY: CLATSOP STATE: OREGON

SCHL. FR: 4213
 SCHL. TD: 4213
 DRLR. TD: 4223
 Elev: KB 940
 DF -
 GL 928