

COMPANY: SOFREGAZ US INC.

WELL: Jefferson Gas LLC "Clayton" well #1

FIELD: Wildcat

COUNTY: Linn

STATE: Oregon

FIELD DATA ONLY

BHC Soine

Gamma Ray

Schlumberger

COUNTY: Linn
 Field: Wildcat
 Location: 2235 FEL & 2486 FNL of Section 28
 Well: Jefferson Gas LLC "Clayton" well #1
 Company: SOFREGAZ US INC
 LOCATION: 2235 FEL & 2486 FNL of Section 28
 Permanent Datum: Ground Level
 Log Measured from: Kelly Bushing
 Drilling Measured from: Kelly Bushing
 AFI Serial No: 008-04400019
 30-SEP-1998
 SECTION: 38
 TOWNSHIP: T05
 RANGE: 3W
 Logging Date: 30-SEP-1998
 Run Number: 1
 Logging Interval: 1348 F
 Bottom Log Interval: 1348 F
 Schlumberger Depth: 900 F
 Top Log Interval: 900 F
 Casing Driller Size @ Depth: 9.625 IN
 Casing Schlumberger: 800 IN
 Bit Size: 6.75 IN
 Type Fluid in Hole: Viscosity: 9.5
 Density: 8.63
 Spud Loss: PH
 Source Of Sample: Tank
 RM @ Measured Temperature: 2780 OHMM @ 69
 RM @ Measured Temperature: 2500 OHMM @ 69
 RM @ Measured Temperature: 2500 OHMM @ 69
 Source RMC: RMC @ Measured Temperature: 69
 Source RMC: RMC @ Measured Temperature: 69
 RM @ MFT: RMF @ MFT: 1.201 @ 71 2.43 @ 71
 Maximum Recorded Temperature: 30-SEP-1998
 Circulation Stopped: 30-SEP-1998
 Lagged On Station: Time: 12:30
 Lagged On Station: Location: 69
 Logged By: Jeff Taylor
 Witnessed By: Jeff Taylor

Run 1	Run 2	Run 3	Run 4
6008856	6008856		
8C1-205	8C1-205		
LOGGED INTERVAL	LOGGED INTERVAL		
START	START		
STOP	STOP		

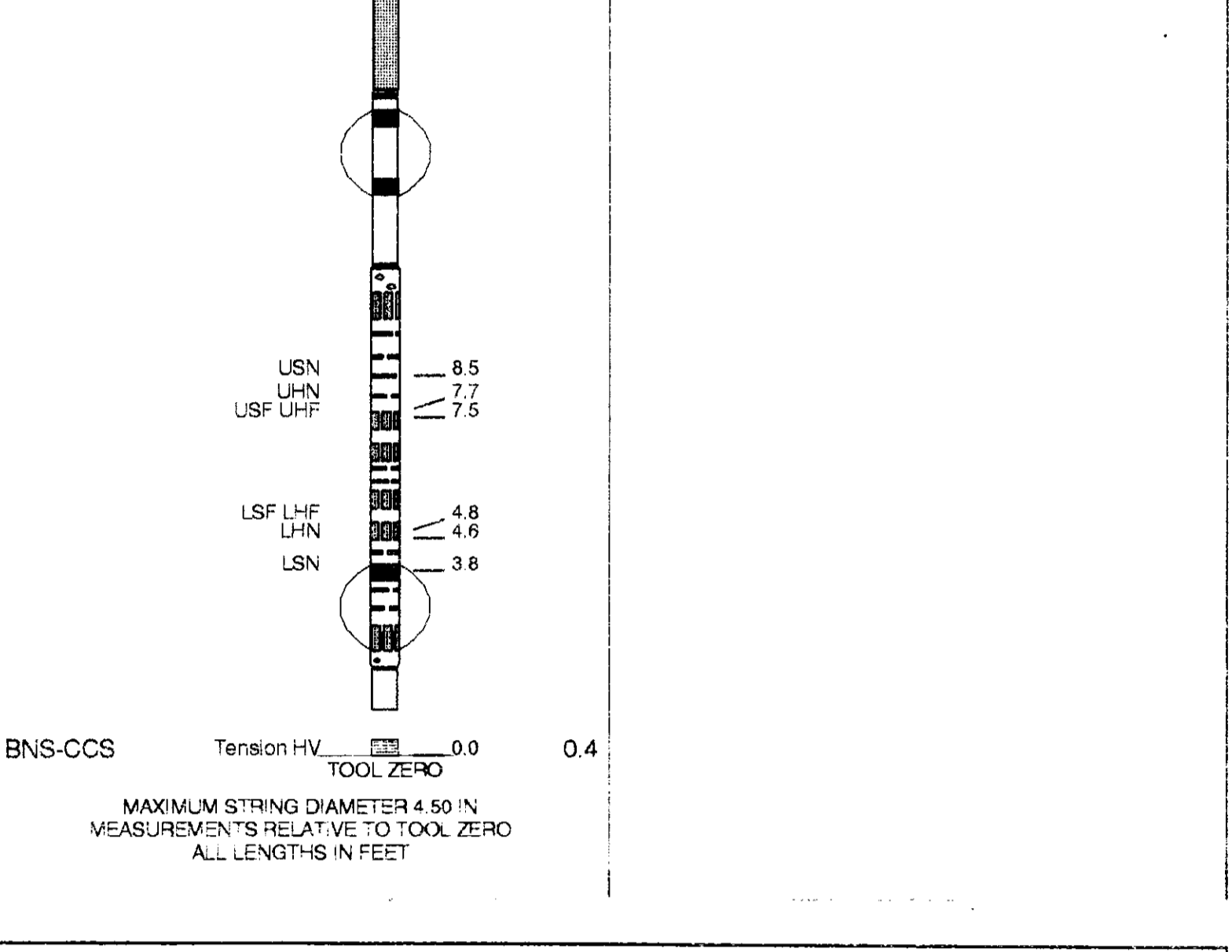
ALL INTERPRETATIONS ARE OPINIONS BASED ON INFERENCE FROM ELECTRICAL OR OTHER MEASUREMENTS AND WE CANNOT AND DO NOT GUARANTEE THE ACCURACY OR CORRECTNESS OF ANY INTERPRETATIONS, AND WE SHALL NOT, EXCEPT IN THE CASE OF GROSS OR WILLFUL NEGLIGENCE ON OUR PART, BE LIABLE OR RESPONSIBLE FOR ANY LOSS, COSTS, DAMAGES OR EXPENSES INCURRED OR SUSTAINED BY ANYONE RESULTING FROM ANY INTERPRETATION MADE BY ANY OF OUR OFFICERS, AGENTS OR EMPLOYEES. THESE INTERPRETATIONS ARE ALSO SUBJECT TO CLAUSE 4 OF OUR GENERAL TERMS AND CONDITIONS AS SET OUT IN OUR CURRENT PRICE SCHEDULE.

OTHER SERVICES1	OTHER SERVICES2
OS1: Array Induction	OS1:
OS2: Neutron	OS2:
OS3: Density	OS3:
OS4:	OS4:
OS5:	OS5:

REMARKS	RUN NUMBER 1	REMARKS	RUN NUMBER 2
1.0 inch standoffs used on array induction			
Big: John Taylor 7190			
Dispatch ID7190			

SERVICE ORDER #:	PROGRAM VERSION:	FLUID LEVEL:	LOGGED INTERVAL:	START:	STOP:

EQUIPMENT DESCRIPTION



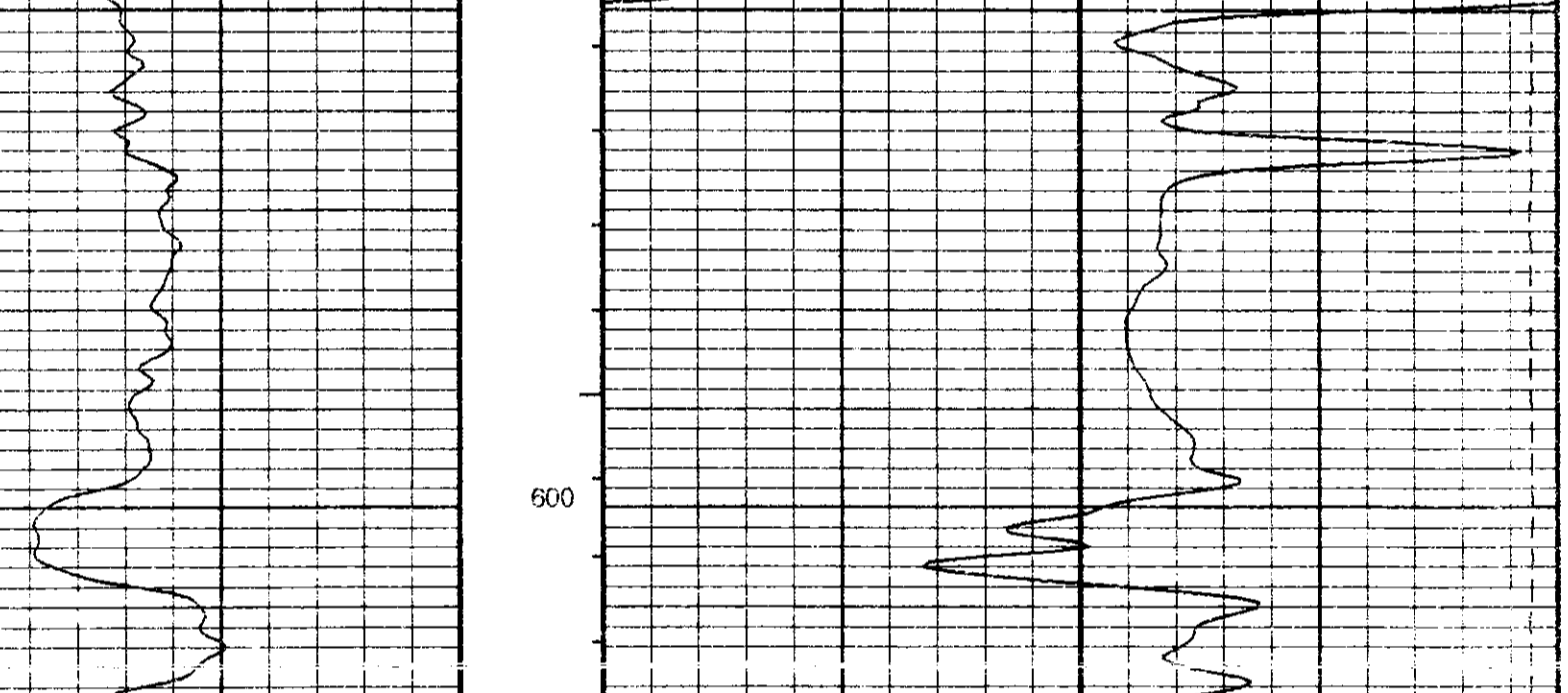
Input DLIS Files	Output DLIS Files
DEFAULT DSLTBA.038 FN:1 FIELD 30-Sep-1998 22:06 1357.5 FT 449.5 FT	DEFAULT DSLTBA.039 FN:32 FIELD 30-Sep-1998 22:10 1357.5 FT 450.0 FT

OP System Version: 8C1-205 MCM

DSLT-TCC	8C1-205	SGT-L	APCW-98Q1
TCC-BF	APCW-98Q1		

PIP SUMMARY
 - Integrated Transit Time Minor Pip Every 1 MS
 - Integrated Transit Time Major Pip Every 10 MS

Time Mark Every 60 S



NOT FINAL DATA

FIELD PRINT MAIN PASS

NOT FINAL DATA

NOT FINAL DATA

NOT FINAL DATA

NOT FINAL DATA

NOT FINAL DATA

NOT FINAL DATA

NOT FINAL DATA

NOT FINAL DATA

NOT FINAL DATA

NOT FINAL DATA

NOT FINAL DATA

NOT FINAL DATA

NOT FINAL DATA

NOT FINAL DATA

NOT FINAL DATA

NOT FINAL DATA

NOT FINAL DATA

NOT FINAL DATA

NOT FINAL DATA

NOT FINAL DATA

NOT FINAL DATA

NOT FINAL DATA

NOT FINAL DATA