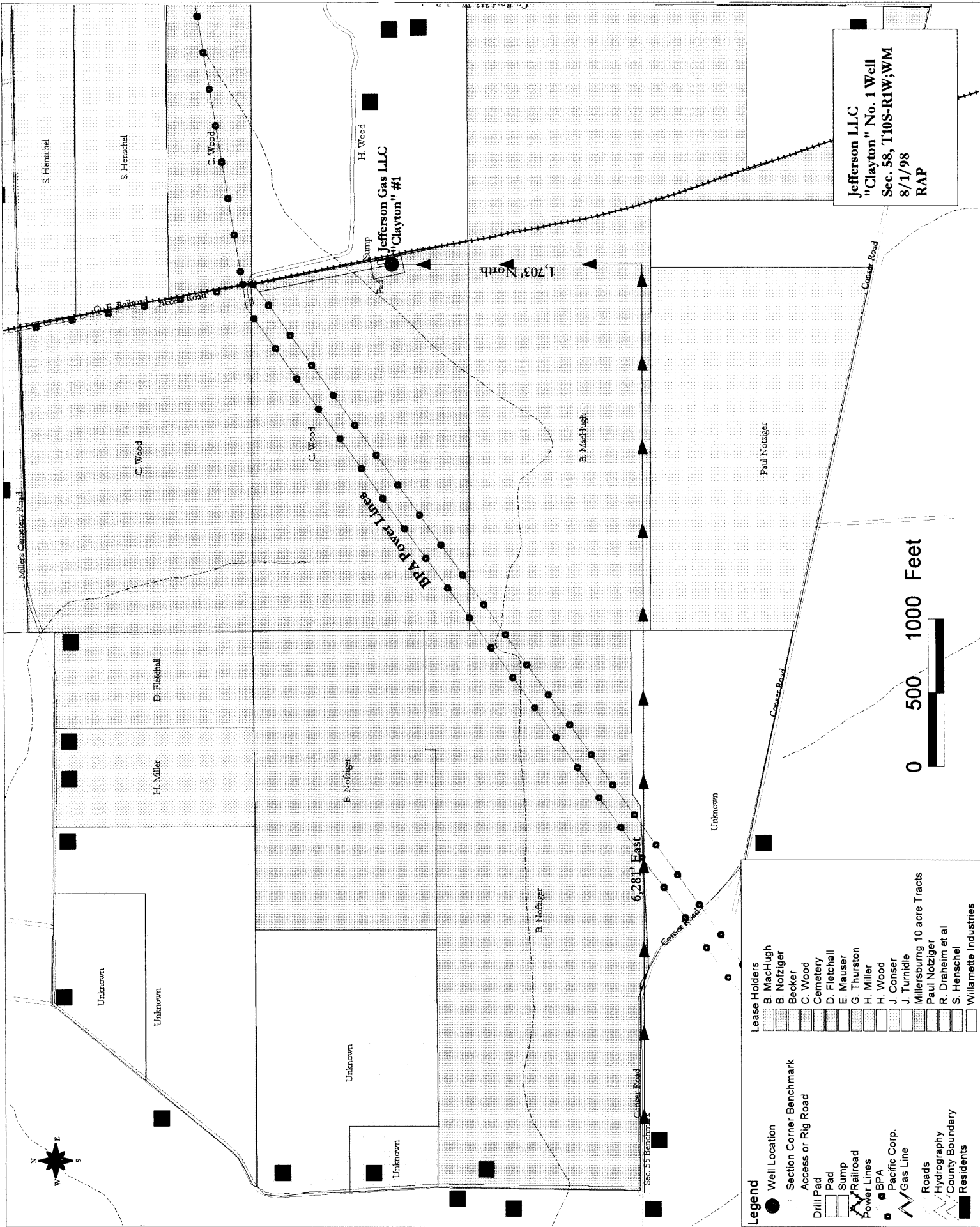


**Legend**

- Water Well
- ▲ PVC Pipe
- Albany City Hydrants
- Well Location

Water Testing Facilities  
 Jefferson Gas LLC  
 "Clayton" No. 1  
 Sec. 58, T10S-R1W, WM  
 8/1/98 (RAP)

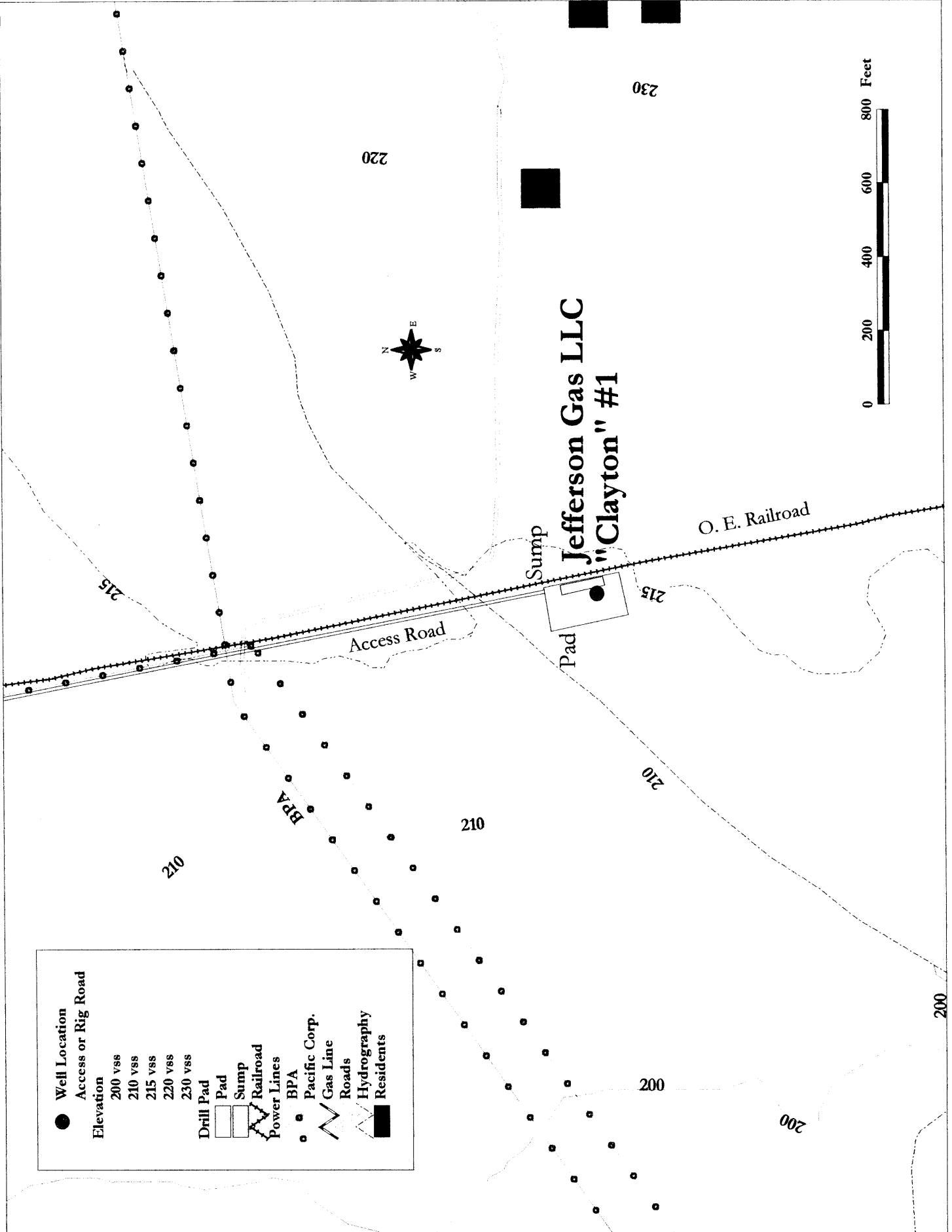




Jefferson LLC  
 "Clayton" No. 1 Well  
 Sec. 58, T10S-R1W;WM  
 8/1/98  
 RAP

- Legend**
- Well Location
  - Section Corner Benchmark
  - Access or Rig Road
  - Drill Pad
  - Pad
  - Railroad
  - Power Lines
  - BPA
  - Pacific Corp.
  - Gas Line
  - Roads
  - Hydrography
  - County Boundary
  - Residents
- Lease Holders**
- B. MacHugh
  - B. Noziger
  - Becker
  - C. Wood
  - Cemetery
  - D. Fitchall
  - E. Mauser
  - G. Thurston
  - H. Miller
  - H. Wood
  - J. Conser
  - J. Turnidge
  - Millersburg 10 acre Tracts
  - Paul Noziger
  - R. Draheim et al
  - S. Henschel
  - Willamette Industries

0 500 1000 Feet



●	Well Location
—	Access or Rig Road
200 vss	Elevation
210 vss	
215 vss	
220 vss	
230 vss	
□	Drill Pad
□	Pad
□	Sump
—	Railroad
—	Power Lines
○	BPA
—	Pacific Corp.
—	Gas Line
—	Roads
—	Hydrography
■	Residents

Jefferson Gas LLC "Clayton" No. 1, Sec. 58, T10S-R1W;WM  
8/1/98 (RAP)