

WELL: Coos County Forest #7-1  
 FIELD: Wildcat  
 COUNTY: Coos  
 STATE: Oregon

COMPANY: Carbon Energy International  
 SCHL FR 3350.0 F  
 SCHL TD 3350.0 F  
 DRILL TD 3450.0 F  
 Elev: KB 548.0 F  
 DF 547.0 F  
 ML 530.0 F

DATE: 15 FEB 1994  
 TIME: 16:01 (UP)

LOGGING SPEED: 3600 FHR

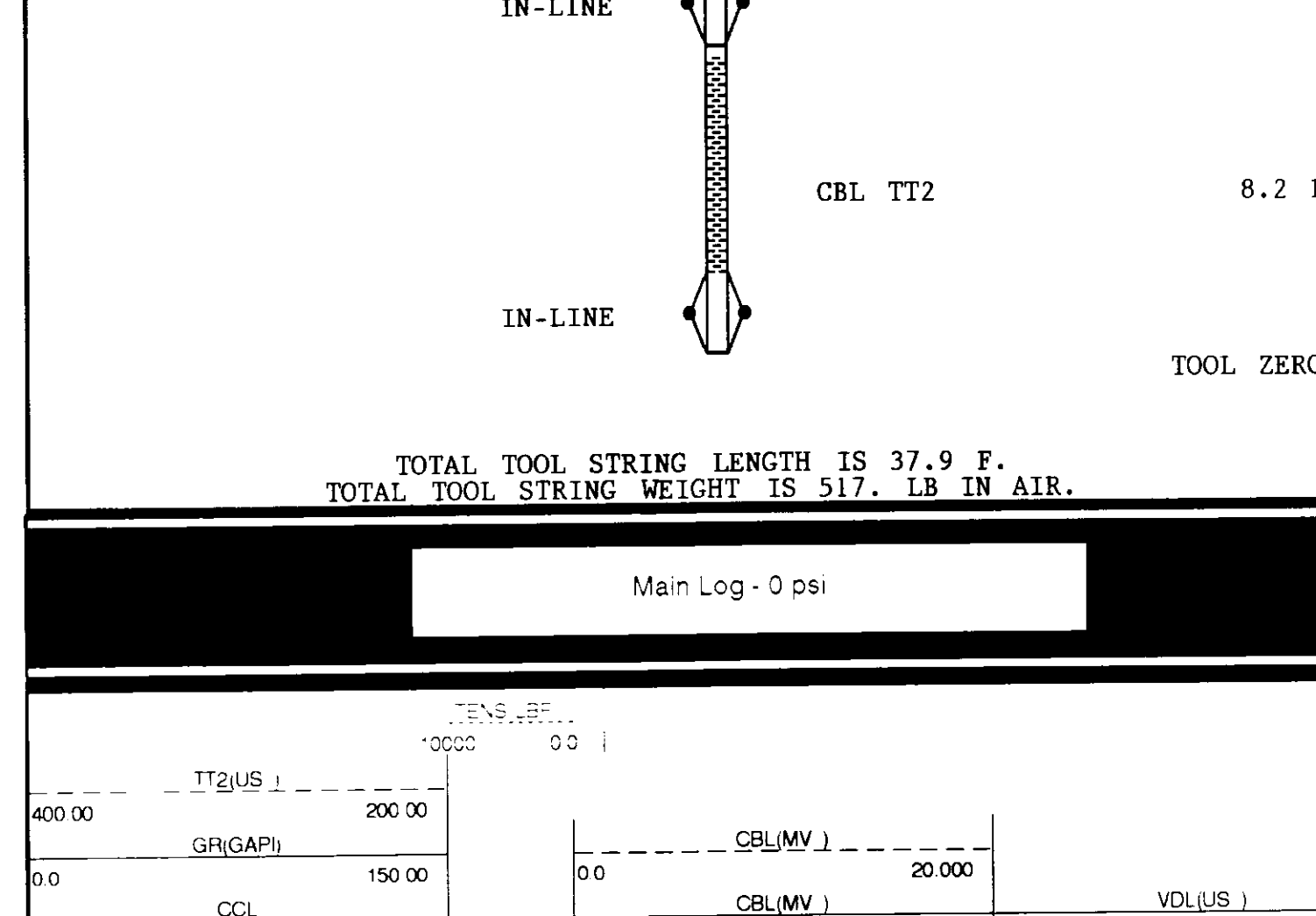
Run No: ONE  
 Service Order No: 454650

EQUIPMENT DATA

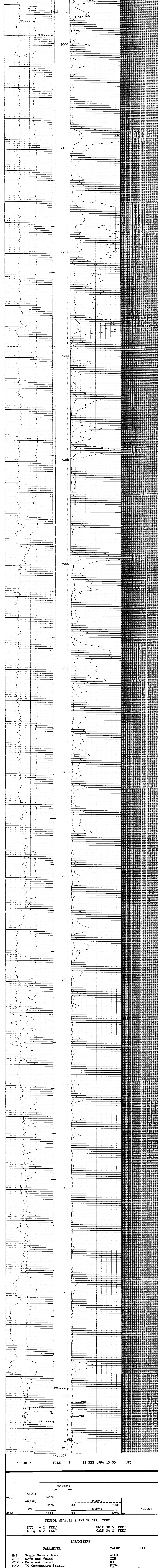
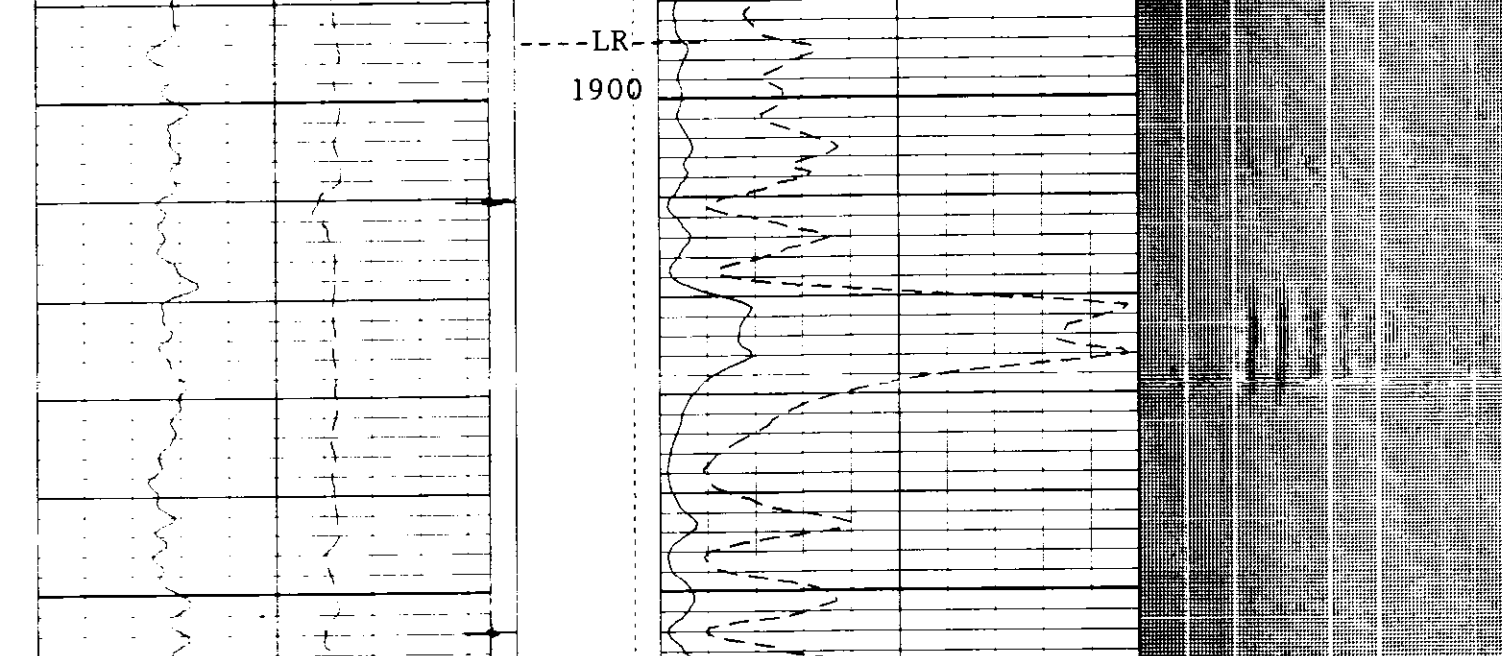
Tool Number 1	SLSWA 2012
Tool Number 2	SICMA 86
Tool Number 3	SGC JA 3545
Tool Number 4	CAL R 1083
Tool Number 5	SILM CA 1329
Tool Number 6	NLM-BC 456
Tool Number 7	
Tool Number 8	
Tool Number 9	
Tool Number 10	
Tool Number 11	
Tool Number 12	

REMARKS:  
 Correlated to SWIS LDT-CNL-GR run 15 Oct 1994  
 Top of fish at approximately 3450

The well name, location and borehole reference data were furnished by the customer. All interpretations are opinions based on inferences from electrical or other measurements and we cannot and do not guarantee the accuracy or correctness of any interpretations and we shall not be liable or responsible for any loss, costs, damages or expenses incurred or sustained by anyone resulting from any interpretations made by any of our officers, agents or employees. These interpretations are also subject to Clause 4 of our General Terms and Conditions as set out in our current Price Schedule.



Main Log - 0 psi



CP 38.2 FILE 8 23-FEB-1994 15:35 (UP)

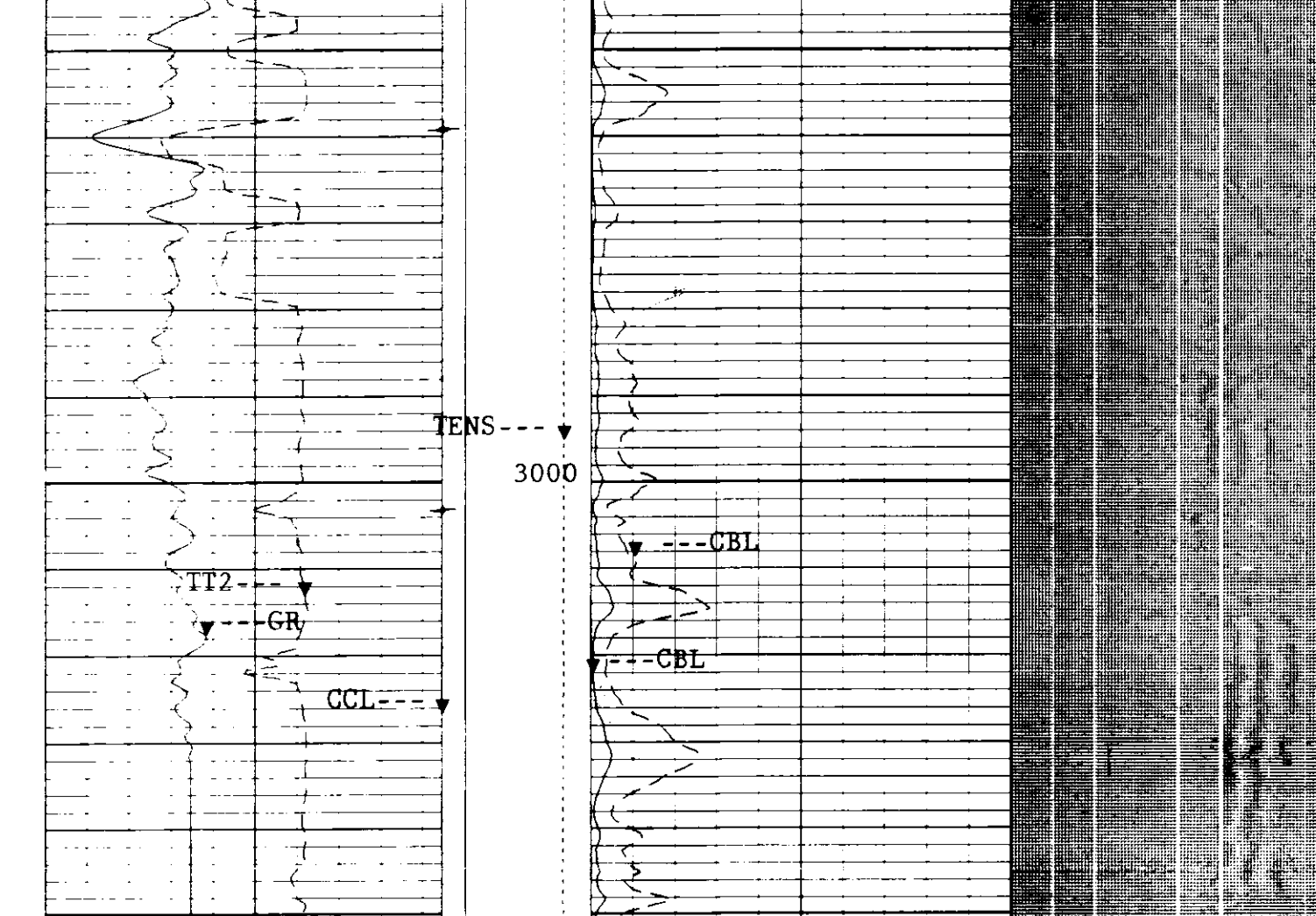
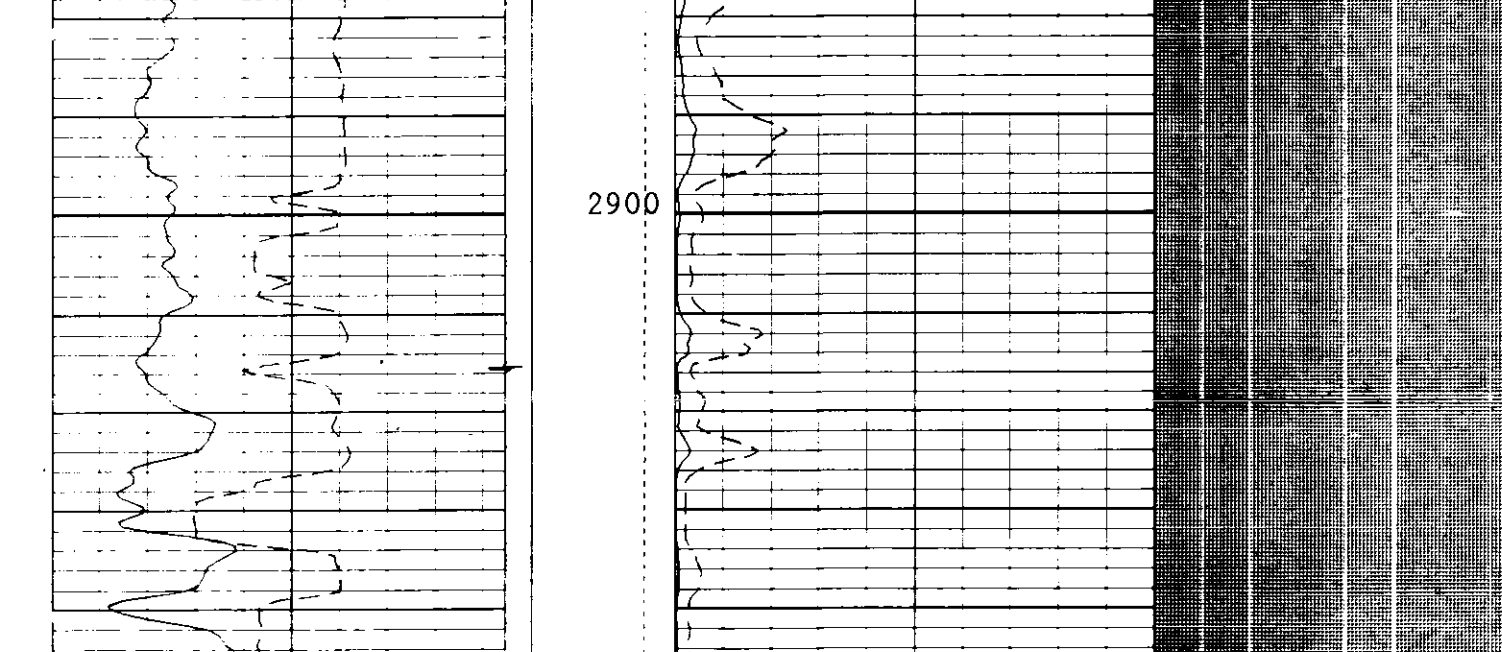
SENSOR MEASURE POINT TO TOOL ZERO

DTI 6.2 FEET  
 SLTQ 8.2 FEET

SGTE 30.5 FEET  
 CALR 34.2 FEET

PARAMETERS

PARAMETER	VALUE	UNIT
SMB - Sonic Memory Board	ALLO	
VDLR - Defn not found	2IN	
VDLQ - Defn not found	D3	
TOCA - TO Correction Status	DISA	
RATE - Firing Rate	15	HZ
DC - Downhole Gain	1/20	
DETE - Detection	E1	
WNSC - Near Minimum Sliding Gate	265	US
CBLG - CBL Gate Width	35	US
AMPL - Sonic Amplitude	2	
CBL - Cement Bond Log	UT	
WFM - Waveform Mode	ALLO	
SS - Sweep Speed	MEDI	
TOD - TO Delay	ALLO	
DTF - Delta-T Fluid	189.000	US/F
DTM - Delta-T Matrix	56.0000	US/F
CDTS - Correction for	100.000	
Formula Select	R-H	
WUMD - Weight of Mud	8.50000	LB/G
NCJT - NGT Calibration	GSRV	
Jig Type	100.000	
Compressive Strength of Cement	23.0000	PSIA
CWEI - Casing Weight	23.0000	LB/F
DWCC - Digitizer Word Count	512	
DSIN - Digitizer Sample Interval	200	US
DDI - Digitizing Delay	8.75000	IN
BS - Bit Size	CASE	
BHS - Borehole Status (Open or Cased)	CASE	
CSIZ - Casing Size	7.00000	IN



CP 38.2 FILE 7 23-FEB-1994 15:31 (UP)

SENSOR MEASURE POINT TO TOOL ZERO

DTI 6.2 FEET  
 SLTQ 8.2 FEET

SGTE 30.5 FEET  
 CALR 34.2 FEET

PARAMETERS

PARAMETER	VALUE	UNIT
SMB - Sonic Memory Board	ALLO	
VDLR - Defn not found	2IN	
VDLQ - Defn not found	D3	
TOCA - TO Correction Status	DISA	
RATE - Firing Rate	15	HZ
DC - Downhole Gain	1/20	
DETE - Detection	E1	
WNSC - Near Minimum Sliding Gate	265	US
CBLG - CBL Gate Width	35	US
AMPL - Sonic Amplitude	2	
CBL - Cement Bond Log	UT	
WFM - Waveform Mode	ALLO	
SS - Sweep Speed	MEDI	
TOD - TO Delay	ALLO	
DTF - Delta-T Fluid	189.000	US/F
DTM - Delta-T Matrix	56.0000	US/F
CDTS - Correction for	100.000	
Formula Select	R-H	
WUMD - Weight of Mud	8.50000	LB/G
NCJT - NGT Calibration	GSRV	
Jig Type	100.000	
Compressive Strength of Cement	23.0000	PSIA
CWEI - Casing Weight	23.0000	LB/F
DWCC - Digitizer Word Count	512	
DSIN - Digitizer Sample Interval	200	US
DDI - Digitizing Delay	8.75000	IN
BS - Bit Size	CASE	
BHS - Borehole Status (Open or Cased)	CASE	
CSIZ - Casing Size	7.00000	IN