



COMPANY: AMERICAN QUASAR PETROLEUM COMPANY
 WELL: QUASAR 29-14 CROWN ZELLERBACH
 FIELD: WILDCAT
 COUNTY: COLUMBIA STATE: OREGON
 LOCATION: 29-14 NSL & 8191 EWL
 DATE: JAN 23 1980

PERMITS: 251 NSL & 8191 EWL
 LOCATION: 29-14 NSL & 8191 EWL
 COUNTY: COLUMBIA STATE: OREGON
 FIELD: WILDCAT
 WELL: QUASAR 29-14 CROWN ZELLERBACH
 COMPANY: AMERICAN QUASAR

Log Measured From: KB
 Drilling Measured From: KB
 Permanent Datum: KB
 Elevation: 566.9
 Run No.: 011-1-79

Depth-Logger: 2880
 Depth-Driller: 2865
 Bm Log Interval: 508
 Casing-Driller: 508
 Casing-Logger: 508
 Bit Size: 6 1/2
 Type Fluid in Hole: GEL
 Density: 9.4
 pH: 10.8
 Source of Sample: CIRCULATED
 Run (at) Meas. Temp.: 2.55 @ 6 F
 Run (at) Rest Temp.: 3.20 @ 36 F
 Run (at) Rm Temp.: 3.31 @ 60 F
 Run (at) Rm Temp.: 2.00 @ 93 F
 Run (at) Rm Temp.: 1.00 @ 11-1
 Circulation Stopped: 1400
 Circulation on Bottom: 2030
 Max Bar Temp: 92 F
 Equipment Location: 8192 SAC
 Recorded By: ANGESEN
 Witnessed By: LANC

WILDCAT
 QUASAR 29-14 CROWN ZELLERBACH
 COLUMBIA STATE OREGON

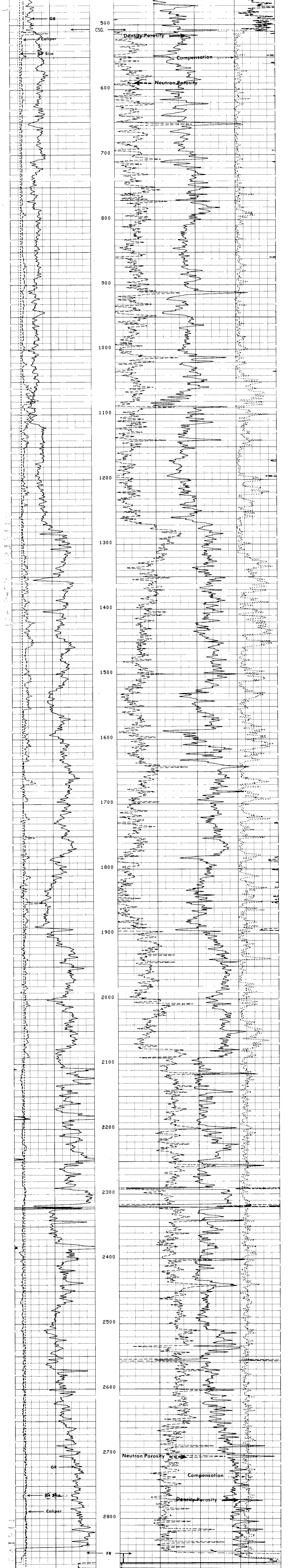
FOLD HERE The well name, location and borehole reference data were furnished by the customer.

RUN NO.	ONE	Type Log	Depth
Service Order No.	21611		
Fluid Level	FULL		
Salinity, PPM CL			
Speed - F.P.M.	30		
EQUIPMENT DATA		REMARKS:	
Dens. Panel	CSU		
Dens. Card	260		
Dens. Skid	253		
Dens. Sonde	426		
Dens. Source	5159		
Dens. Calibrator	1241		
Neuf. Panel	--		
Neuf. Cart.	1208		
Neuf. Source	708		
Neuf. Calibrator	1192		
GR Cart.	1172		
Memorizer Panel	--		
Tape Recorder (TR)	--		
Depth Encoder (DRE)	--		
Pressure Wheel (CPW)	--		
Centralizer	Type		
Enter Spring	No.		
Standoffs	In-line, or None	S. O. - Inches	
CALIBRATION DATA			
GR	BKG. CPS	87	
	Source CPS	233	
	Sens. - Cal	--	
	T. C. - Cal	--	
	Short Spacing - Before Log	2708	
	Long Spacing - Before Log	1163	
	Short Spacing - After Log	--	
	Long Spacing - After Log	--	
	P1 - Before Log	479	
	P2 - Before Log	804	
	P1 - After Log	--	
	P2 - After Log	--	

LOGGING DATA									
DEPTH		CNP		FDC		GR		Scale	
Top	Bottom	Porosity Scale	Matrix	Auto Corr. or Hole Size Setting	Porosity Scale	Grain Density	Liquid Density	Hole Fluid	Sens. Logged
508	2865	60-0	SS+OH	AUTO	60-0	2.65	1.00	L1Q	150
									T. C. Zero Div Left 100 Div. Scale Per 150

All interpretations are opinions based on inferences from electrical or other measurements and we cannot, and do not guarantee the accuracy or correctness of any interpretation, and we shall not, except in the case of gross or willful negligence on our part, be liable or responsible for any loss, costs, damages or expenses incurred or sustained by anyone resulting from any interpretation made by any of our officers, agents or employees. These interpretations are also subject to Clause 4 of our General Terms and Conditions as set out in our current Price Schedule.

CALIPER DIAM. IN INCHES 5" 15"	POROSITY INDEX % SANDSTONE MATRIX COMPENSATED FORMATION DENSITY POROSITY 60 45 30 15 0
GAMMA RAY API UNITS 0 150	COMPENSATED NEUTRON POROSITY 60 45 30 15 0
	CORRECTION GRAMS CC -25 0 -25
	BULK DENSITY GRAMS CC 1.65 2.15 2.65



CALIPER DIAM. IN INCHES 5" 15"	CORRECTION GRAMS CC -25 0 -25
GAMMA RAY API UNITS 0 150	BULK DENSITY GRAMS CC 1.65 2.15 2.65
	COMPENSATED NEUTRON SANDSTONE MATRIX POROSITY 60 45 30 15 0
	DENSITY POROSITY INDEX % SANDSTONE MATRIX 60 45 30 15 0

COMPANY: AMERICAN QUASAR PETROLEUM COMPANY
 WELL: QUASAR 29-14 CROWN ZELLERBACH
 FIELD: WILDCAT
 COUNTY: COLUMBIA STATE: OREGON
 SCHL. FR: 2865
 SCHL. TD: 2865
 DRLR. TD: 2880
 Elev.: KB 576.9
 DF: --
 GL: 566.9