

Schlumberger

DUAL INDUCTION-SFL 2"

CSU

COMPANY: OREGON NATURAL GAS DEVELOPMENT CORP.

WELL: "DESHAZER" 13-22

FIELD: ST. LOUIS

COUNTY: MARION

STATE: OREGON

NATION: USA

LOCATION: 1860' N & 560' E FR SM CDR

SECT: 22 TWP: 5S RGE: 2W

PERMANENT DATUM: GL ELEVATIONS-

ELEV. OF PERM. DATUM: 182.1 F KB: 193.2 F

LOG MEASURED FROM: 11.1 F ABOVE PERM. DATUM DF: 182.1 F

DRLG. MEASURED FROM: KB GL: 182.1 F

DATE: 17 FEB 85

RUN NO: 1

DEPTH-DRILLER: 2511.0 F

DEPTH-LOGGER: 2511.0 F

BTM. LOG INTERVAL: 2505.0 F

TOP LOG INTERVAL: 507.0 F

CASING-DRILLER: 506 F

CASING-LOGGER: 507 F

CASING: 8 5/8"

WEIGHT: 24.00 LB/F

BIT SIZE: 7 7/8"

BIT DEPTH: 2511 F

OTHER SERVICES-
BHC
HDTPROGRAM
TAPE NO:
SERV NO:
ORDER NO:
432406

TYPE FLUID IN HOLE: GEL/LIGNO
 DENSITY: 8.9 LB/G
 VISCOSITY: 59.0 S
 PH: 8.5
 FLUID LOSS: 7.8 C3
 SOURCE OF SAMPLE: FLOWLINE
 RM: 2.530 OHMM AT 60.0 DEGF
 RMF: 3.520 OHMM AT 49.0 DEGF
 RMC: 2.690 OHMM AT 55.0 DEGF
 SOURCE RMF/RMC: MEASURED/MEASURED
 RM AT BHT: 1.926 OHMM AT 81.0 DEGF
 RMF AT BHT: 2.240 OHMM AT 81.0 DEGF
 RMC AT BHT: 1.895 OHMM AT 81.0 DEGF

TIME CIRC. STOPPED: 11:00 2/17
 TIME LOGGER ON BTM.: 13:45 2/17

MAX. REC. TEMP: 81.0 DEGF

LOGGING UNIT NO: 8126
 LOGGING UNIT LOC: SACRAMENTO
 RECORDED BY: MAVER
 WITNESSED BY: MEYER/BRUER

REMARKS:

CHLORIDES: 850PPM
 DIL AND SONIC WERE RUN IN COMBINATION.
 CMEZ'S AND FINS WERE USED FOR CENTRALIZATION.

EQUIPMENT NUMBERS-

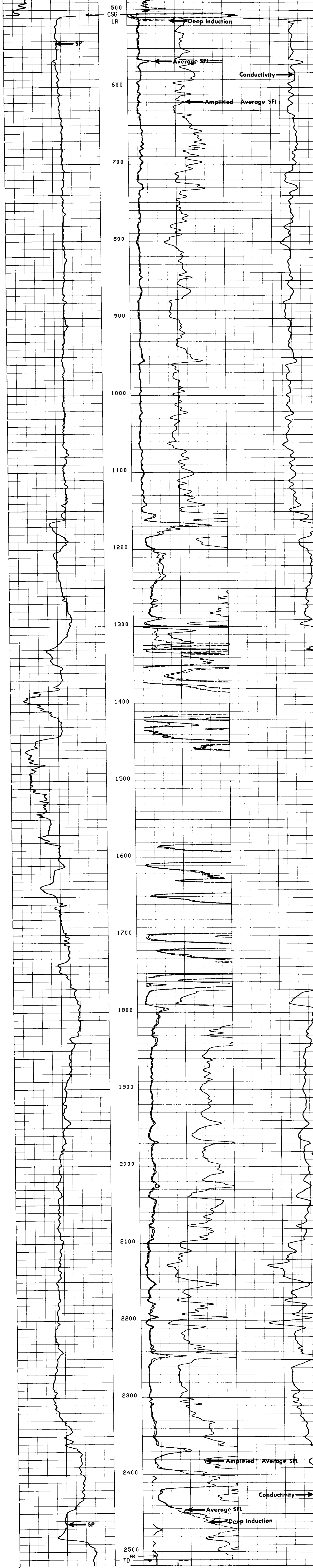
DIS 1342 DIC 1386 SLS 375 SLC 1259
 MCD 1186 IEM 162 SLM 443

ALL INTERPRETATIONS ARE OPINIONS BASED ON INFERENCES FROM ELECTRICAL OR OTHER MEASUREMENTS AND WE CANNOT, AND DO NOT GUARANTEE THE ACCURACY OR CORRECTNESS OF ANY INTERPRETATIONS, AND WE SHALL NOT, EXCEPT IN THE CASE OF GROSS OR WILLFUL NEGLIGENCE ON OUR PART, BE LIABLE OR RESPONSIBLE FOR ANY LOSS, COSTS, DAMAGES OR EXPENSES INCURRED OR SUSTAINED BY ANYONE RESULTING FROM ANY INTERPRETATION MADE BY ANY OF OUR OFFICERS, AGENTS OR EMPLOYEES. THESE INTERPRETATIONS ARE ALSO SUBJECT TO OUR GENERAL TERMS AND CONDITIONS AS SET OUT IN OUR CURRENT PRICE SCHEDULE.

FILE 9 17-FEB-85 15:04
 DATA ACQUIRED 17-FEB-85 14:30

SP (MV)	ILD (OHMM)	30.000	CILD(MMHO)
	SFLA(OHMM)	6.0000	
-100.0	0.0	0.0	0.0

FILE 9 17-FEB-85 14:30



FILE 9 17-FEB-85 13:54

SP (MV)	ILD (OHMM)	30.000	CILD(MMHO)
	SFLA(OHMM)	6.0000	
-100.0	0.0	0.0	0.0

SENSOR MEASURE POINT TO TOOL ZERO

CBL 37.0 FEET	AMPL 37.0 FEET
TT3 33.3 FEET	TT4 32.3 FEET
TT1 36.0 FEET	TT2 37.0 FEET
CALI 56.1 FEET	SRAT 34.5 FEET
SFL 6.4 FEET	ILD 9.4 FEET
SP 2.5 FEET	ILM 5.7 FEET
TENS 2.5 FEET	SPAR 2.5 FEET
NOIS 28.8 FEET	

PARAMETERS

NAME	VALUE	UNIT	NAME	VALUE	UNIT
HSV1	WF1		DWS	16	
DSIN	5	US	DDEL	200	US
CDTS	140.000		DWCD	512	
DTF	189.000	US/F	DTC	56.0000	US/F
SBR	1.00000	OHMM	DSEC	6.20000	MMHO
FPHI	SPHI		MSEC	7.30000	MMHO
RS	7.87500	IN	BHS	OPEN	
SPDR	.0100000				