

Schlumberger
DUAL INDUCTION-SFL-SONIC
LINEAR CORRELATION LOG

COMPANY: NAHAMA AND WEAGANT ENERGY CO.
 WELL: SALMON BERRY H.N.R. #24-22-64
 FIELD: MIST
 COUNTY: COLUMBIA
 STATE: OREGON

LOG MEASUREMENT FROM: 21-OCT-1993
 PERMANENT DATUM: KB
 ELEV: 1107.0 F
 ABOVE PERM DATUM: 10.0 F

LOG MEASUREMENT FROM: 21-OCT-1993
 PERMANENT DATUM: KB
 ELEV: 1107.0 F
 ABOVE PERM DATUM: 10.0 F

DATE: 21-OCT-1993
 RUN NO.: ONE
 DEPTH (DRILLER): 2547.0 F
 DEPTH (LOG): 2547.0 F
 BIT LOG INTERVAL: 2541.0 F
 TOP LOG INTERVAL: 902.0 F
 Casing-Driller: 8.98 @ 902.0 F
 Casing-Logger: 8.98 @ 902.0 F
 Bit Size: 7.75 @ 2543.0 F

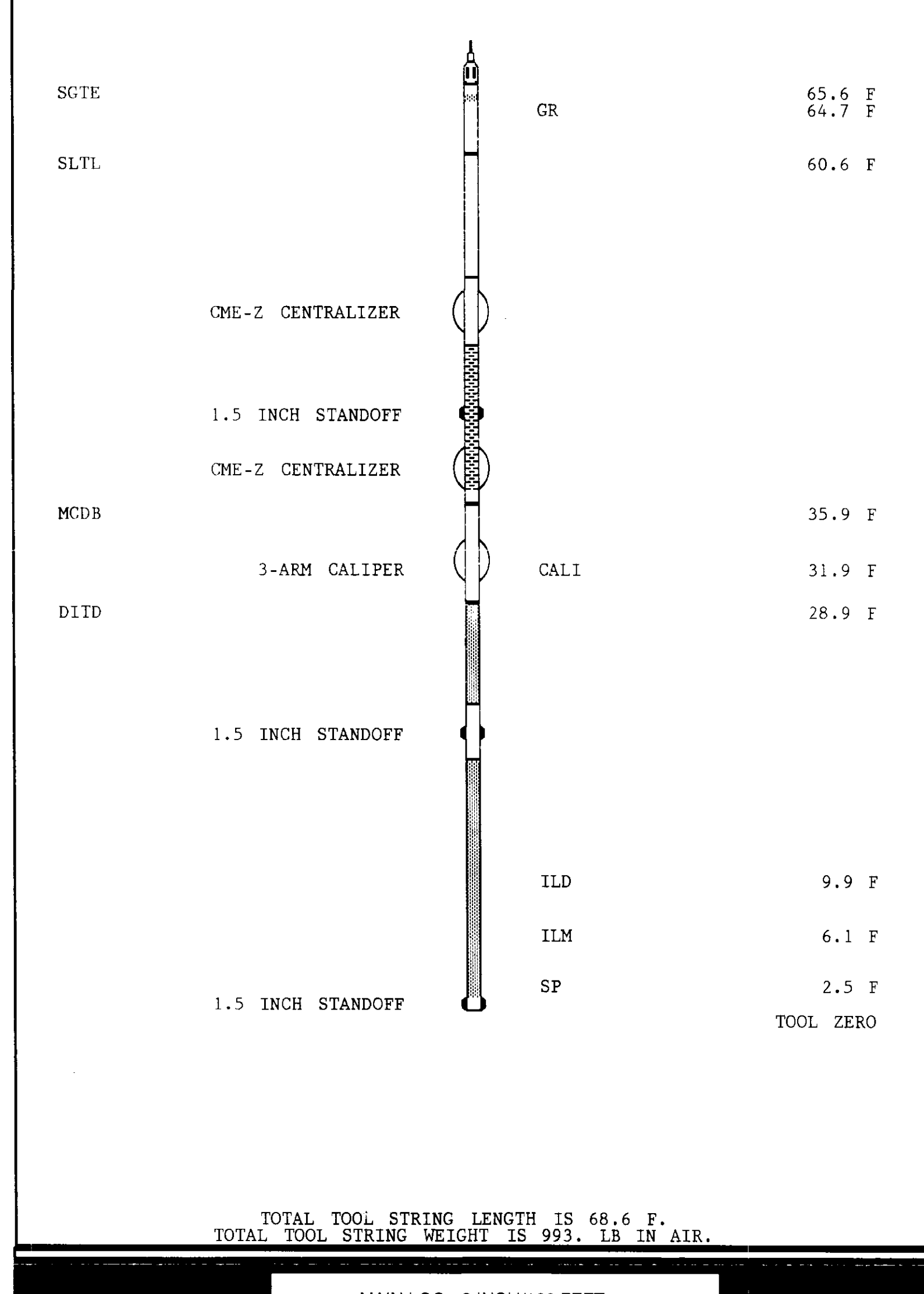
TYPE FLUID IN HOLE: GEL
 DEN: 8.98 LB/G
 VISC: 38.0 S
 PH: 7.0
 FIC: 0.0
 SOURCE OF SAMPLE: FLOWLINE
 Fm @ Meas. Temp.: 4.610 CHMM @ 64.0 DEGF
 Fm @ Meas. Temp.: 2.750 CHMM @ 60.0 DEGF
 Fm @ Meas. Temp.: 3.210 CHMM @ 60.0 DEGF
 Fm @ Meas. Temp.: 3.97 CHMM @ 64.0 DEGF
 Fm @ BHT: MEASURED @ 64.0 DEGF
 CIRCULATION EFFECT: 15.30 21-OCT-93
 LAGGER ON BOTTOM: 18.30 21-OCT-93
 MAX. REC. TEMP.: 64.0 DEGF
 EQUIP.: 5604
 LOCATION: SACHAMENTO
 RECORDED BY: M. LEWIS
 FILED BY: B. FINCH/TH. LUCAS

The well name, location and borehole reference data were furnished by the customer.

All interpretations are opinions based on inferences from electrical or other measurements and we cannot and do not guarantee the accuracy or correctness of any interpretations and we shall not be held responsible for any loss, damage or expense sustained by anyone resulting from any interpretations made by any of our officers, agents or employees. These interpretations are also subject to Clause 4 of our General Terms and Conditions as set out in our current Price Schedule.

Run No.	ONE
Service Order No.	624382
Drilling Fluid Level	5.0 F
Salinity	400.0 PPM
Rmf @ BHT	2.025 OHMM @ 84.0 DEGF
Rmc @ BHT	2.363 OHMM @ 84.0 DEGF
Logging Speed	3600.0 F/HR
EQUIPMENT DATA	
Tool Number 1	DIS-EC 1422
Tool Number 2	DIC-DA 1149
Tool Number 3	MCD-DA 853
Tool Number 4	SLS-WAC 389
Tool Number 5	SLS-MA 159
Tool Number 6	SGC-JC 3206
Tool Number 7	
Tool Number 8	
Tool Number 9	
Tool Number 10	
Tool Number 11	
Tool Number 12	

REMARKS:
 TWO 1.5 INCH STANDOFFS RUN ON DIL
 TWO CMEZ CENTRALIZERS RUN ON SONIC
 ONE 1.5" STANDOFF RUN ON SONIC



MAIN LOG - 2 INCH/100 FEET

ACCUMULATED INTEGRATION VALUES SUMMARY:

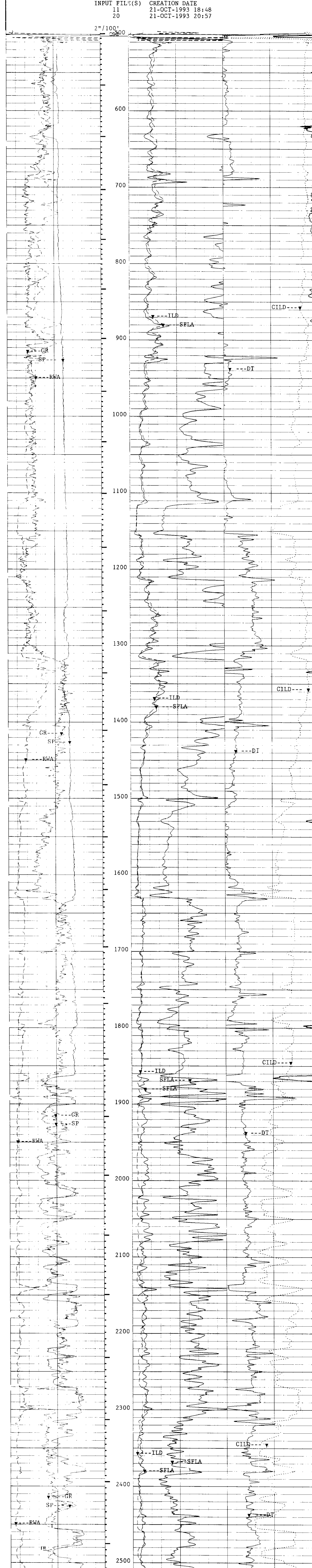
Integrated Hole Volume:	690.891 F3	FROM 2547.00 F	TO 502.000 F
Integrated Cement Volume:	465.029 F3	FROM 2547.00 F	TO 502.000 F
(ASSUMING 4.50000 IN O.D. CASING)			
Integrated Transit Time:	.280366 S	FROM 2556.00 F	TO 494.500 F

EVENT MARK SUMMARY:

OUTPUT	INTERVAL BETWEEN PIPS	DEPTH TRACK EDGE
Integrated Transit Time	.00100000 S	LEFT EDGE

GR(GAPI)	150.00	LD(OHMM)	30.000	CILD(M/M)	0.0
SP(MV)	0.0	SFLA(OHMM)	6.0000	1000.0	DT(US/F)
FWA(OHMM)	3.0000	SFLA(OHMM)	30.000	150.00	50.000

CP 38.2 FILE 23 21-OCT-1993 21:51
 INPUT FILE(S) CREATION DATE
 11 21-OCT-1993 18:48
 20 21-OCT-1993 20:57



CP 38.2 FILE 23 21-OCT-1993 21:39
 INPUT FILE(S) CREATION DATE
 11 21-OCT-1993 18:48
 20 21-OCT-1993 20:57

GR(GAPI)	150.00	LD(OHMM)	30.000	CILD(M/M)	0.0
SP(MV)	0.0	SFLA(OHMM)	6.0000	1000.0	DT(US/F)
FWA(OHMM)	3.0000	SFLA(OHMM)	30.000	150.00	50.000

PARAMETERS

PARAMETER	VALUE	UNIT
SMB	-	DISA
VDLR	-	DISA
TOCA	-	DISA
RATE	15	HZ
DG	-	AUTO
DETE	180	E2
NMSG	2	US
CBLG	3	US
AMPL	25	
CBL	-	UT
WFM	1	
SS	-	FAST
TOD	-	DISA
DTF	189.0000	US/F
DTM	56.0000	US/F
CDTS	100.0000	
SPFS	-	R-H
PP	-	RECO
DO	0.0	IN
DO2	0.0	IN
WMUD	8.900000	LB/G
MSEC	8.000000	MM/M
SBR	1.000000	OHMM
DSEC	6.700000	MM/M
FCD	4.500000	IN
NCJT	-	GSRY
FPHI	-	SPHI
DWCO	512	
DSIN	5	US
DDEL	200	US
RS	7.875000	IN
BHS	-	OPEN

COMPANY: NAHAMA AND WEAGANT ENERGY CO. SCHL FR 2541.0 F
 WELL: SALMON BERRY H.N.R. #24-22-64 SCHL TD 2547.0 F
 FIELD: MIST Elev: KB 1117.0 F
 COUNTY: COLUMBIA STATE: OREGON DF 1116.0 F
 GL 1107.0 F