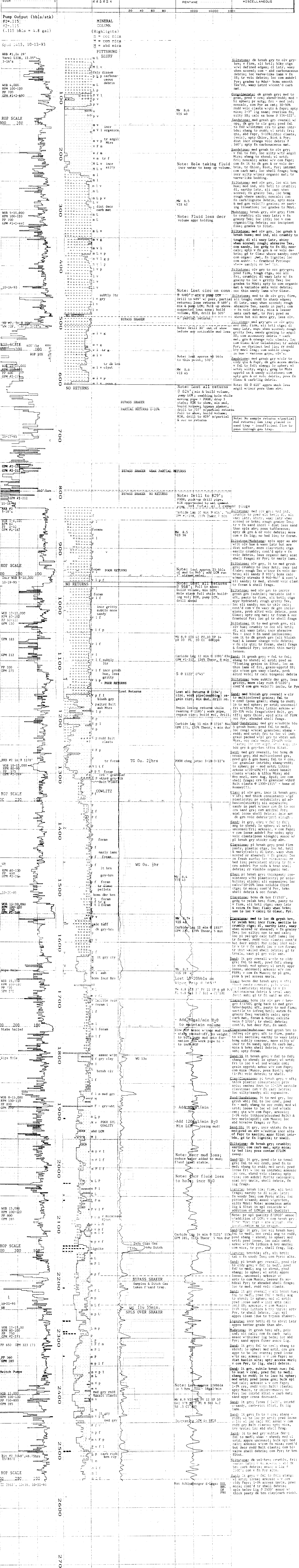


HORIZON

WELL LOGGING

COMPANY: NAHAMA & BEAGANT ENERGY CO.
 WELL: "SALMON WERRY" H.N.R. #24-22-64
 LOCATION: 2208.6' E and 384.4' N from the SW corner of Sec. 22, T6N, R4W, W. 1, W. M.
 ELEVATION: 1107' G.L. 1117' K.B.
 FIELD: MIST
 COUNTY: Columbia, Oregon
 API NUMBER: 36-009-00312
 LOGGING DATE: 10-13-93
 LOGGING DEPTHS: 10-13-93
 LOGGING DATES: 30' to 2553'
 GEOLOGIST: Jeff Vaughan
 COMPANY MAN: Taylor
 CONTRACTOR: Taylor Drilling Inc.
 RIG:
 LOGGING GEOLOGISTS: Dan Cross, Jim Eastes
 BIT SIZE: 12.25" to 505', 7.875" to 2553'
 CASING: 8.625" @ 505'
 DRILLING FLUID: Enterprise
 Engineer: Rick Jones
 CALIBRATION BY METHANE - 100 UNITS

ABBREVIATIONS		SYMBOLS	
CO	Circulate Out	PEBBLES >2mm	[Symbol]
LAT	Logged After Trap	SAND	[Symbol]
LAS	Logged After Survey	SANDSTONE	[Symbol]
CS	Connection Gas	SILTSTONE	[Symbol]
KC	Kelly Cut gas	MUDSTONE	[Symbol]
WG	Wider Gas	SHALE	[Symbol]
TG	Trap Gas	MARL	[Symbol]
SG	Survey Gas	CLAY	[Symbol]
NR	None	CHERT	[Symbol]
WE	Wider Run	DOLOSTONE	[Symbol]
DOPE	IN-EVAL	LIMESTONE	[Symbol]
MOB	1000.000* (full scale)	VOLCANICS	[Symbol]
---	---	TUFF	[Symbol]
---	---	BASALT	[Symbol]



Run Schlumberger 5-Legs: DIL, BHG, GR, PMS