



DUAL INDUCTION GUARD LOG

WITH 2" LINEAR CORRELATION LOG

2" 100'
COMPANY: AMERICAN BUASAR PETROLEUM COMPANY
WELL: HICKEY No. 9-12
FIELD: LEBANON
COUNTY: LINN
STATE: OREGON
LOCATION: SOUTH 4 000' EAST OF THE
HIGHEST CORNER
CIVIL
DIP: 2°

PERMITS: 322.6
DATE: 10-27-83
DIP: 2-5-81
DIP: 2-10-81
DIP: 4-692
DIP: 4-692
DIP: 4-692
DIP: 4-692

DATE: 10-27-83
DIP: 2-5-81
DIP: 2-10-81
DIP: 4-692
DIP: 4-692
DIP: 4-692
DIP: 4-692

DATE: 10-27-83
DIP: 2-5-81
DIP: 2-10-81
DIP: 4-692
DIP: 4-692
DIP: 4-692
DIP: 4-692

DATE: 10-27-83
DIP: 2-5-81
DIP: 2-10-81
DIP: 4-692
DIP: 4-692
DIP: 4-692
DIP: 4-692

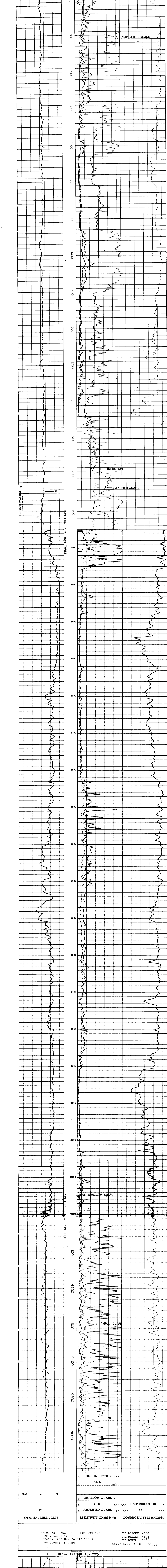
DATE: 10-27-83
DIP: 2-5-81
DIP: 2-10-81
DIP: 4-692
DIP: 4-692
DIP: 4-692
DIP: 4-692

Service Ticket No. 035112 Remarks: RUN TWO: 055110, RUN THREE: 055114, RUN FOUR: 055267

Change in Mud Type or Additional Samples	Type Log	Depth	Scale Up Hole	Scale Down Hole
Date Sample No.				
Depth Core				
Type Fluid in Hole				

Dens	Visc	Other
1	1	
Source of Sample	DNL	TWO
R. @ Meas. Temp.	N/A @ N/A F	Run No.
R. @ Meas. Temp.	N/A @ N/A F	Tool Type and No.
R. @ Meas. Temp.	N/A @ N/A F	Pad Type
R. @ Meas. Temp.	N/A @ N/A F	Tool Position
R. @ Meas. Temp.	N/A @ N/A F	Other

Well logs do not guarantee the accuracy of any interpretation of log data, conversion of log data to physical rock parameters or recommendations which may be given by Well personnel or which may appear on the log or any other log derived therefrom. The user of such data releases the American Buasar Petroleum Company, its employees and agents from all liability and responsibility for any damages, losses or expenses resulting from the use thereof.



POTENTIAL MILLIVOLTS: -10 to +10

RESISTIVITY OHMS M/M: SHALLOW GUARD 50, 500 DEEP INDUCTION; O.S. 500, 1000, O.S. 500

CONDUCTIVITY M MHOS/M: SHALLOW GUARD 10; O.S. 50, 100

AMERICAN BUASAR PETROLEUM COMPANY
HICKEY No. 9-12
LEBANON (API No. 36-043-00013)
LINN COUNTY, OREGON

T.D. LOGGED 4690
T.D. DRILLER 4692
T.D. WELEX 4692
ELEV. K.B. 340 G.L. 329.6

