



ATLAS WIRELINE SERVICES
 COMPLETED **DENSLOG**
 COMPLETED **NEUTRON**

COMPANY: NORTHWEST NATURAL GAS COMPANY
WELL: I. N. 136-11
FIELD: MIST
COUNTY: COLUMBIA
STATE: OREGON

LE NO.: 3947
I. NO.: 6-898-98287
LOCATION: 2122 1/2 WEST 1/4 CORNER OF SECTION 14 T11N R11E S1E DISTRICT 11

REMARKS: RECORDING FROM K. B. 11.4 FT. ABOVE P.D. OF WELL HEADS FROM 29 SEPT 91 TO 29 SEPT 91.

IN THE EVENT OF AN EMERGENCY, THE OPERATOR SHALL BE RESPONSIBLE FOR THE PROTECTION OF THE WELL. THE OPERATOR SHALL BE RESPONSIBLE FOR THE PROTECTION OF THE WELL. THE OPERATOR SHALL BE RESPONSIBLE FOR THE PROTECTION OF THE WELL.

REMARKS RUN (1)

TAYLOR RIG 4
 BHT 122 F & 123 F
 VOLUME COMPUTED FOR 8 1/2" CASING
 REPORT SECTION RECORD ON MAIN LOG DUE TO NEUTRON ACTIVATION
 GAMMA RAY SP LOG 2105

REMARKS RUN (2)

TAYLOR RIG 4
 BHT 103 F & 103 F
 TOTAL BOREHOLE VOLUME RECORDED = 230 FT³
 VOLUME COMPUTED FOR 5 1/2" LINER = 120 FT³

EQUIPMENT DATA

RUN	TRIP	TOOL	SERIAL NO.	SERIES NO.	POSITION
1	1	CDL	7417B	2227XA	DECENT.
1	1	CDL	7417B	2227XA	DECENT.
1	1	CN	5b06b	1309XA	DECENT.
1	1	GR	78b07		
1	1	TEMP			
1	1	PCM	73007	3506XA	DECENT.

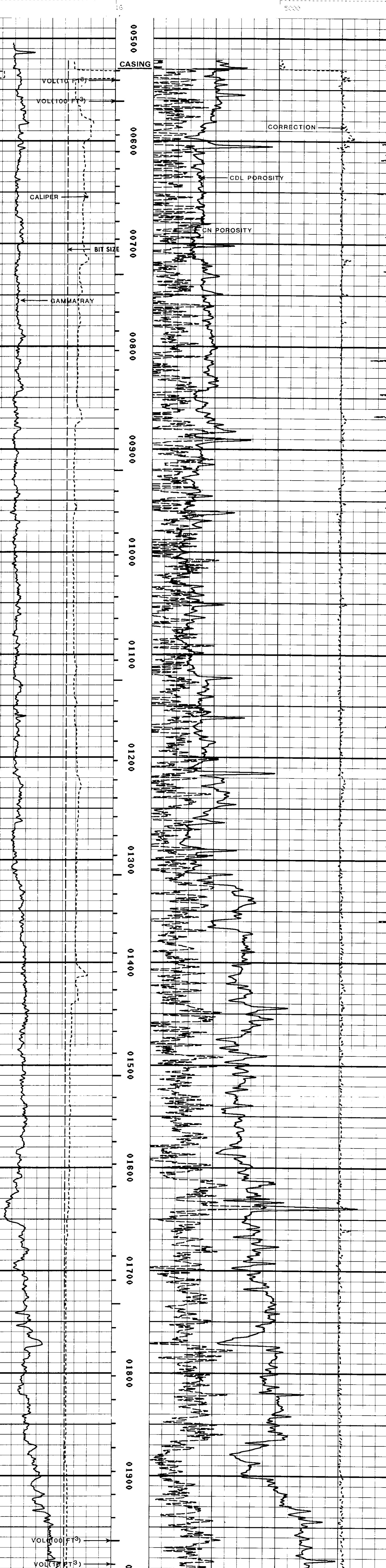
EQUIPMENT DATA

RUN	TRIP	TOOL	SERIAL NO.	SERIES NO.	POSITION
2	1	CDL	7417B	2227XA	DECENT.
2	1	CDL	7417B	2227XA	DECENT.
2	1	CN	5b06b	2435XA	DECENT.
2	1	GR	78b07	1309XA	DECENT.
2	1	TEMP			
2	1	PCM	73007	3506XA	DECENT.

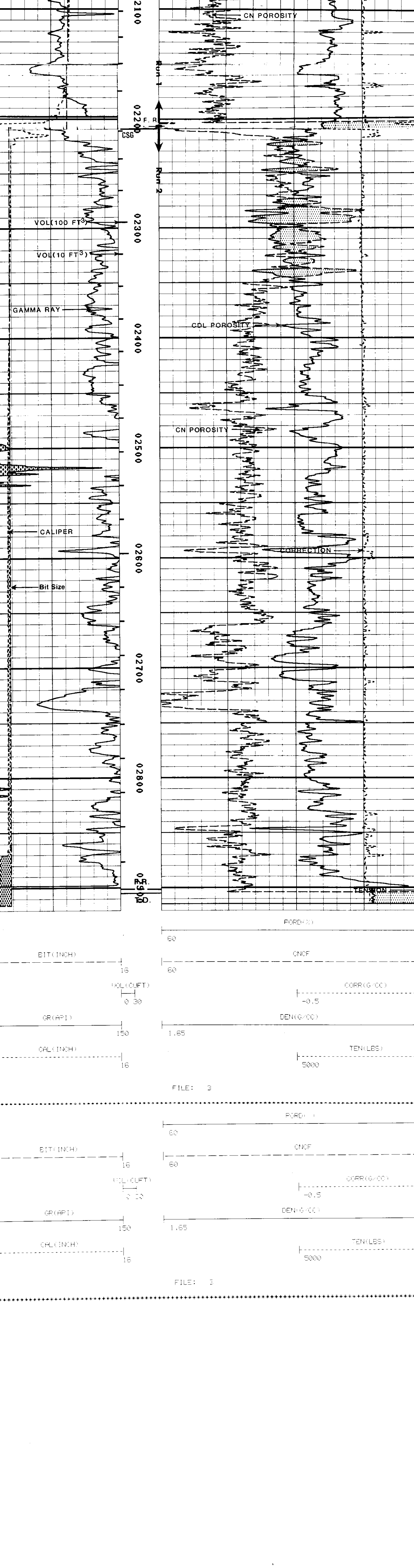
2" = 100'

COMPANY: OREGON NATURAL GAS DEVELOPMENT CORP. RUN: 1
 WELL NAME: I. N. 136-11 TRIP: 1
 SERVICE: EN1094 FILE: 3 DATE: 09 24 91 TIME: 03:13:12
 REVISION: F51556 REV:0002 VER:2.0 MODE: RECORD

BIT (INCH) 60
 COR (INCH) 0
 CORR (G/CC) -0.5 0.5
 DEN (G/CC) 1.65 2.65
 TEN (LBS) 5000



BIT (INCH) 60
 COR (INCH) 0
 CORR (G/CC) -0.5 0.5
 DEN (G/CC) 1.65 2.65
 TEN (LBS) 5000



BIT (INCH) 60
 COR (INCH) 0
 CORR (G/CC) -0.5 0.5
 DEN (G/CC) 1.65 2.65
 TEN (LBS) 5000