



4-ARM CALIPER LOG

FILE NO. _____ COMPANY OREGON NATURAL GAS CORP
 WELL IW 22D-10
 FIELD MIST
 COUNTY COLUMBIA STATE OR.
 LOCATION: 285' N. & 2816' E. OF W4 CORNER
 5" = 100'
 LOCATION: SEC 10 T14P14 R3E34 OTHER SERVICES _____
 PERFORMED DURING Q. ELEVATIONS
 LOGGING MEASURED FROM WB 11.5' FT. ABOVE P.O. WB 798.8'
 DRILLING MEASURED FROM WB IF 787.3'

DATE	8/30/88
RUN	15995
SERVICE ORDER	2157
DEPTH-TRAILER	2157
DEPTH-LOADER	2157
BOTTOM LOADED INTERVAL	2152'
TOP LOADED INTERVAL	2186'
CRSING - DRILLER	8.5/8" @ 2185'
CRSING - LOADER	2185'
BIT SIZE	15"
TYPE FLUID IN HOLE	CEALUMER
DENSITY / VISCOSITY	9.4 38
PH / FLUID LOSS	11.1 6.4
SOURCE OF SPURGE	FLUOLINE
REL. HT MESS. TEMP.	1.25 @ 70 F
REL. HT MESS. TEMP.	1.65 @ 70 F
REL. HT MESS. TEMP.	1.90 @ 70 F
SOURCE OF RHT / RMC	HEBS
PH AT BIT	0.8
TIME SINCE CIRCULATION	1.5 HRS
HEAT. RET. TEMP. DEG. F	110 F
EQUIP. NO. / LOC.	HL 6406 SACRAMENTO
RECORDED BY	B. HEDON
WITNESSED BY	RR. THOMAS

REMARKS RUN (1)
 BHV COMPUTED FOR 5.5" LINER

EQUIPMENT DATA				
RUN	TRIP	TOOL	SERIAL NO.	SERIES NO.
1	1	4CAL	42216	1925
1	1	GR		
POSITION				
CENT				

CURVE DELAYS

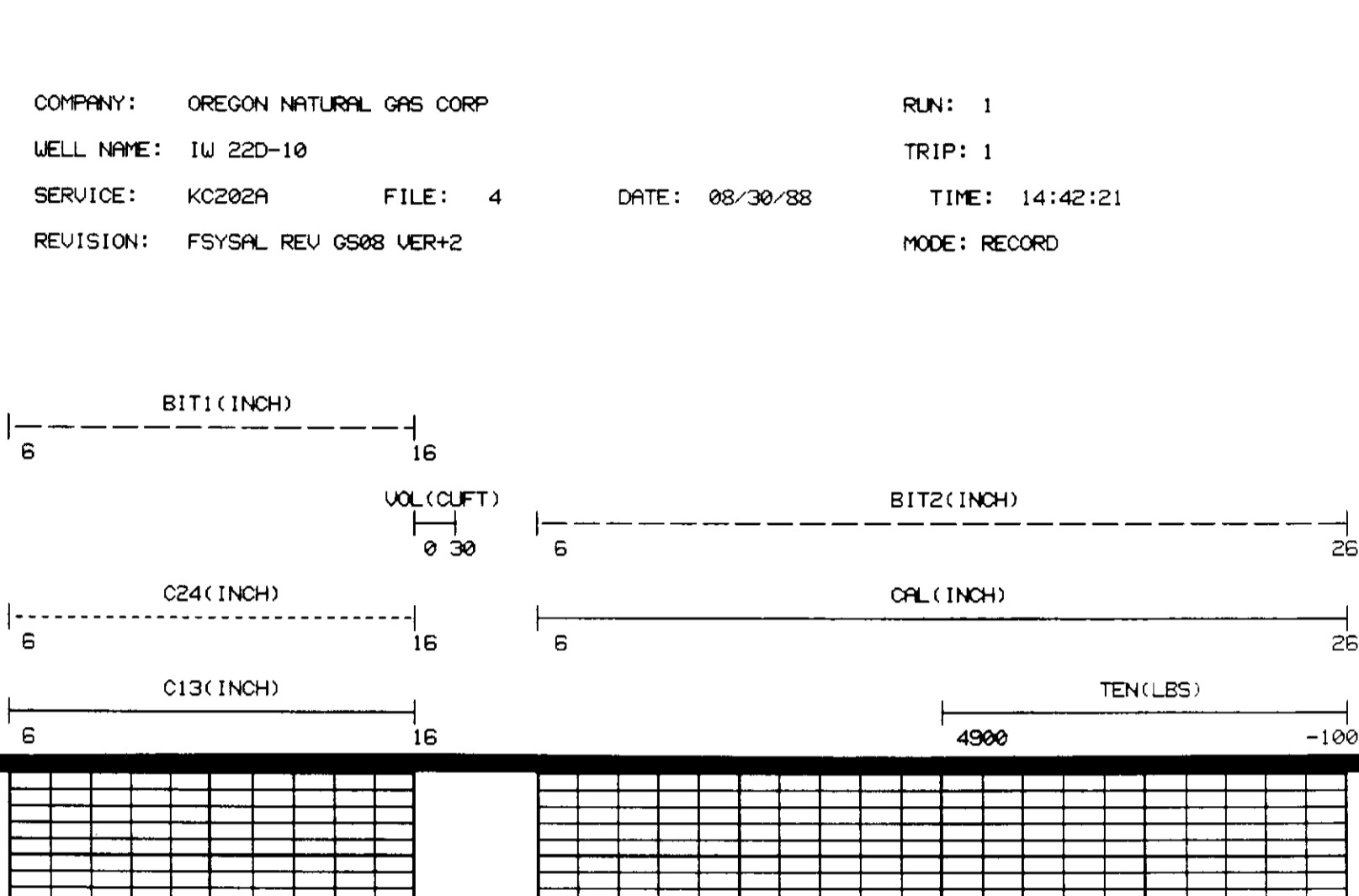
CURVE	DELAY	UNITS
C13	0.9	FT, IN
C24	0	FT, IN
GR	10.0	FT, IN

PARAMETERS

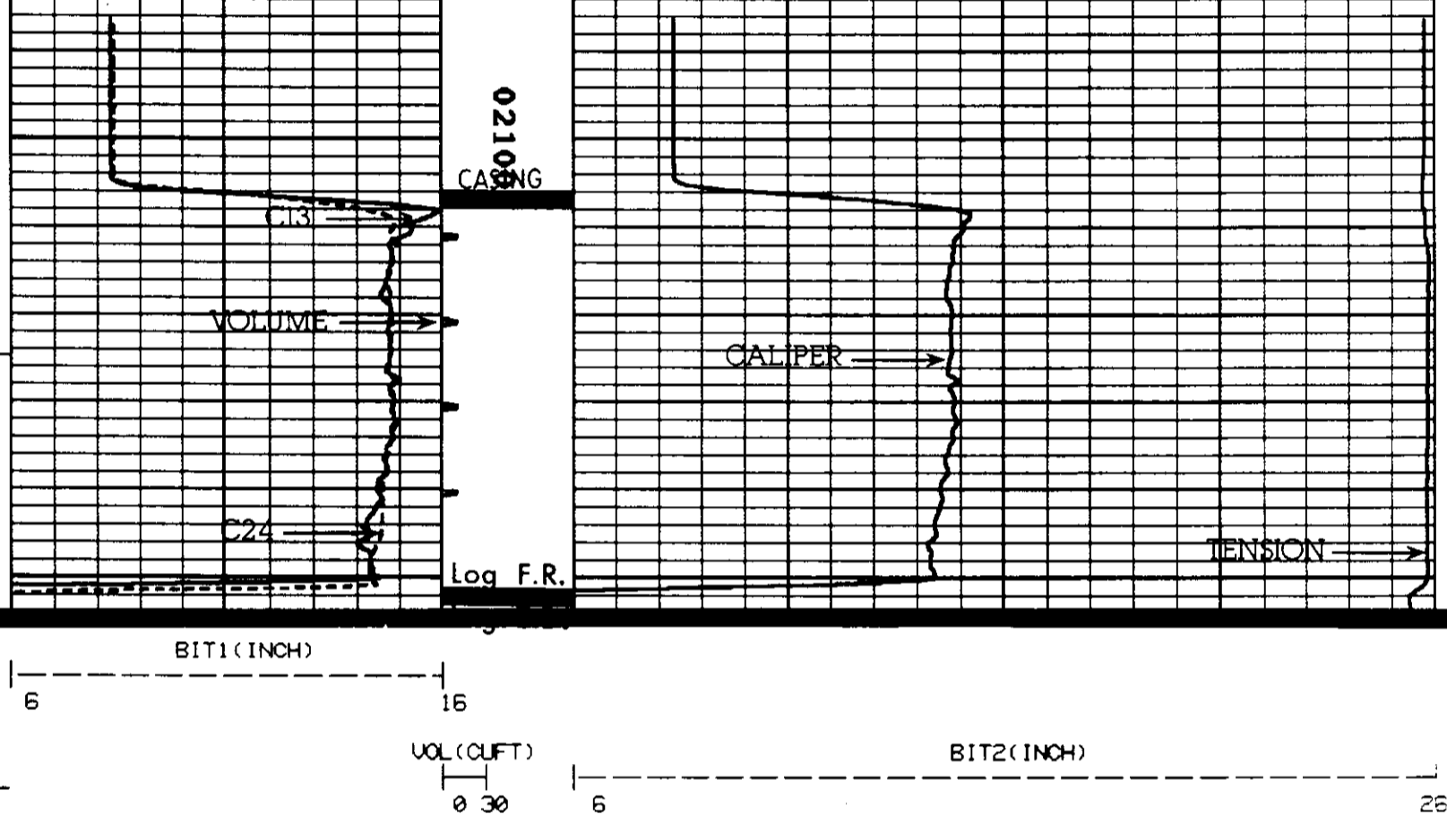
NAME	DEPTH INTERVAL	VALUE	UNITS
O.D.	2154 TO 2097	5.500	INCH

DISPLAY SCALE CHANGES
 *** NONE ***

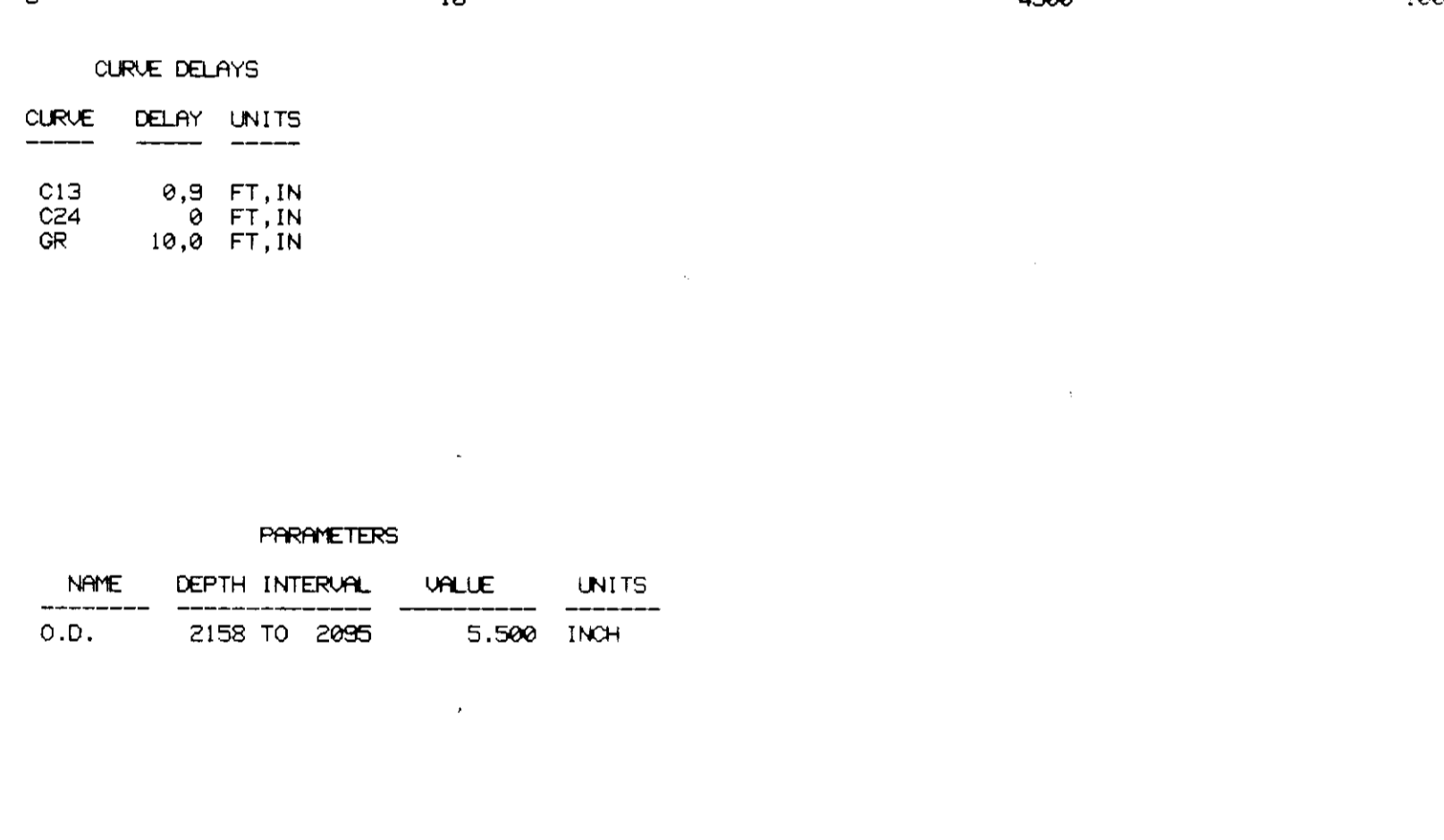
COMPANY: OREGON NATURAL GAS CORP RUN: 1
 WELL NAME: IW 22D-10 TRIP: 1
 SERVICE: KC202A FILE: 4 DATE: 08/30/88 TIME: 14:42:21
 REVISION: FSYSL REV GS08 VER+2 MODE: RECORD



02108



02100



02100

 * CALIBRATION/VERIFICATION SUMMARIES *
 * DATE 08/30/88 TIME 14:46:36 *
 * RUN 1 TRIP 1 *

LOG NAME 4CAL ASSET NO. 42216 UNIT NO. HL 6406
 CALIBRATION ENTERED ON 08/30/88 AT 14:25:50

CURVE	MILLIVOLTS LOW	MILLIVOLTS HIGH	SCALING FACTORS ADD.	MULT.	ENGINEERING VALUES LOW	ENGINEERING VALUES HIGH	UNITS
C13	916.0	2552.2	0.362	0.0134	6.000	15.000	INCH
C24	979.2	2527.4	0.308	0.0142	6.000	15.000	INCH

DATE 08/30/88 CALIBRATION TIME 14:25:50

PRIMARY VERIFICATION NOT DONE

DATE 08/30/88 BEFORE LOG VERIFICATION TIME 14:39:44

CURVE	E	VALUE	SCALING FACTORS ADD.	MULT.	ENGINEERING VALUES LOW	ENGINEERING VALUES HIGH	UNITS
C13	E	1311.7	1.062	0.0134	E	8.277	INCH
C24	E	1385.9	0.308	0.0142	E	8.365	INCH

DATE 08/30/88 AFTER LOG VERIFICATION TIME 14:46:10

CURVE	E	VALUE	SCALING FACTORS ADD.	MULT.	ENGINEERING VALUES LOW	ENGINEERING VALUES HIGH	UNITS
C13	E	1307.8	1.062	0.0134	E	8.255	INCH
C24	E	1385.4	0.308	0.0142	E	8.362	INCH

*** GR NOT CALIBRATED ***