

ATLAS MIRELINE SERVICES
4-ARM CALIPER LOG

FILE NO. _____
COMPANY OREGON NATURAL GAS CORP
WELL IW 238-3
FIELD MIST
COUNTY COLUMBIA
STATE OR
5" = 100'

LOCATION: 1/4 CORNER OF
R15 S & 15th E OF THE
SEC 3 T14N R06E S4
ELEVATIONS
LOGGING MEASURED FROM NG 11.4' F. ABOVE P.D.
DRILLING MEASURED FROM NG 1894.5'
OR 1073.1'

PERMANENT DRILL LOG NO. _____
LOGGING MEASURED FROM NG 11.4' F. ABOVE P.D.
DRILLING MEASURED FROM NG 1894.5'
OR 1073.1'

SERVICE ORDER 138846
DATE 7/10/88
DEPTH-LOGGER 2125
BOTTOM LOGGED INTERVAL 2115'
TOP LOGGED INTERVAL 2105'
USING - DRILLER 8 2628'
USING - LOGGER 8 508'
BIT SIZE 4 1/4
LIFE FLUID IN HOLE KOL POLYMER 40
FRESH FLUID LOSS 10.8
SCALE OF STRIP 10.8
RMC AT HES. TEMP. 0
RMC AT HES. TEMP. 0
SOURCE OF RMC / RMC 0
RMC BIT BIT 0
TIME SINCE CIRCULATION 1 HR.
MAY. REC. TEMP. DEG. F 112
EQUIP. NO. / LOC. HL 6406 SRC
RECORDED BY B. HELTON
WITNESSED BY HR. THOMAS

IN MAKING INTERPRETATIONS OF LOGS, OUR EMPLOYEES WILL GIVE CUSTOMER THE BENEFIT OF THEIR BEST JUDGMENT, BUT SINCE ALL INTERPRETATIONS ARE OPINIONS BASED ON INFORMATION FROM ELECTRICAL OR OTHER MEASUREMENTS, WE CANNOT, AND WE DO NOT WARRANT THE ACCURACY OR CORRECTNESS OF ANY INTERPRETATION. WE SHALL NOT BE LIABLE OR RESPONSIBLE FOR ANY LOSS, COST, DAMAGES, OR EXPENSES WHATSOEVER INCURRED OR SUSTAINED BY THE CUSTOMER RESULTING FROM ANY INTERPRETATION MADE BY ANY OF OUR EMPLOYEES.

ATLAS MIRELINE SERVICES
Western Atlas International
A Division of Western Atlas

FOLD HERE

REMARKS RUN (1)

EQUIPMENT DATA

RUN	TRIP	TOOL	SERIAL NO.	SERIES NO.	POSITION
1	1	4CAL	42216	1905	CENT
1	1	GR			

CURVE DELAYS

CURVE	DELAY	UNITS
C13	0.8	FT. IN
C24	0	FT. IN
GR	10.0	FT. IN

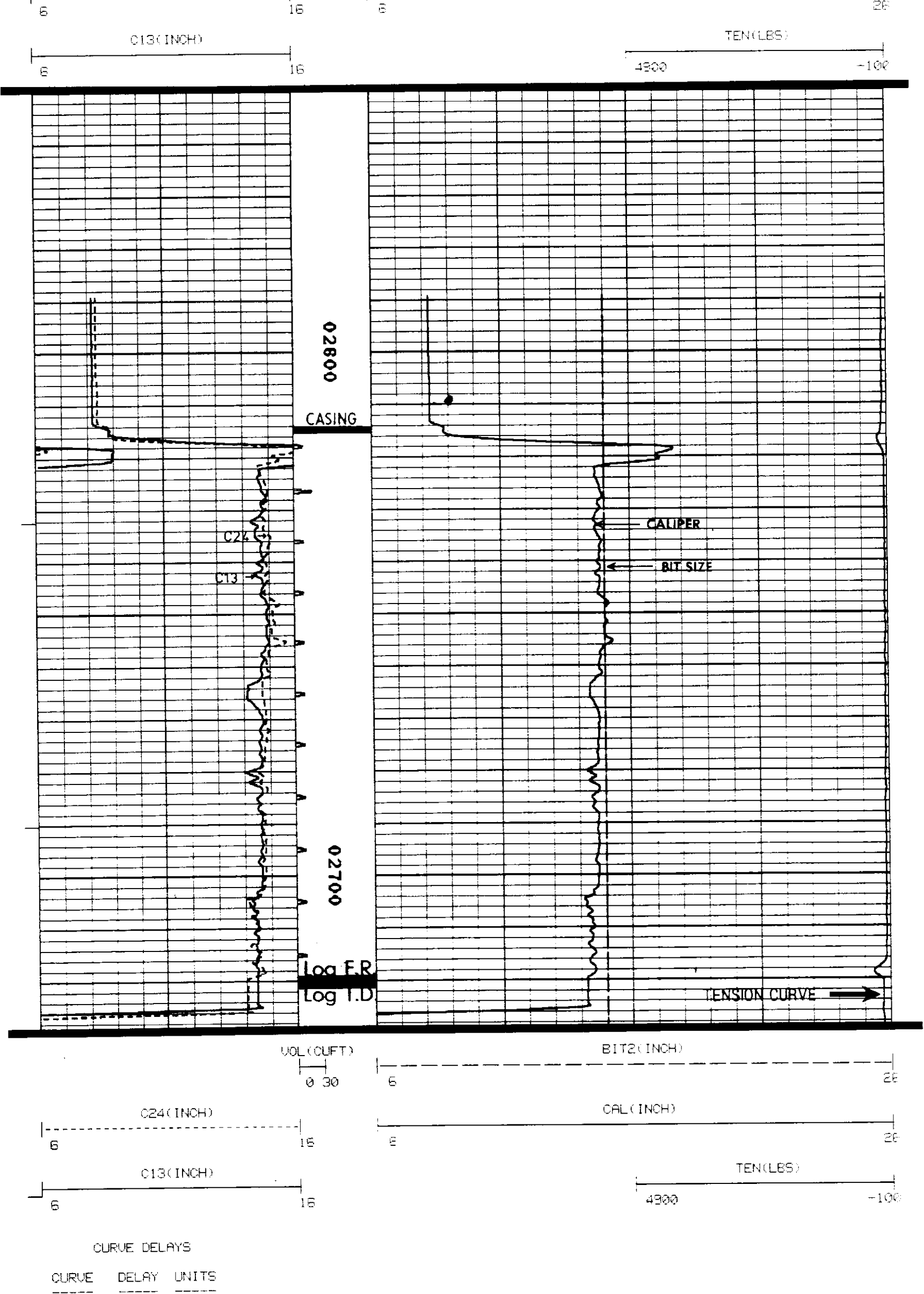
PARAMETERS

NAME	DEPTH INTERVAL	VALUE	UNITS
O.D.	2728 TO 2600	5.500	INCH

DISPLAY SCALE CHANGES
*** NONE ***

COMPANY: OREGON NATURAL GAS CORP
WELL NAME: IW 238-3
SERVICE: KC202A
REVISION: PSYCAL FEV 0508 VER 2

RUN: 1
TRIP: 1
DATE: 07/10/88
TIME: 15:42:04
MODE: RECORD



CURVE DELAYS

CURVE	DELAY	UNITS
C13	0.8	FT. IN
C24	0	FT. IN
GR	10.0	FT. IN

PARAMETERS

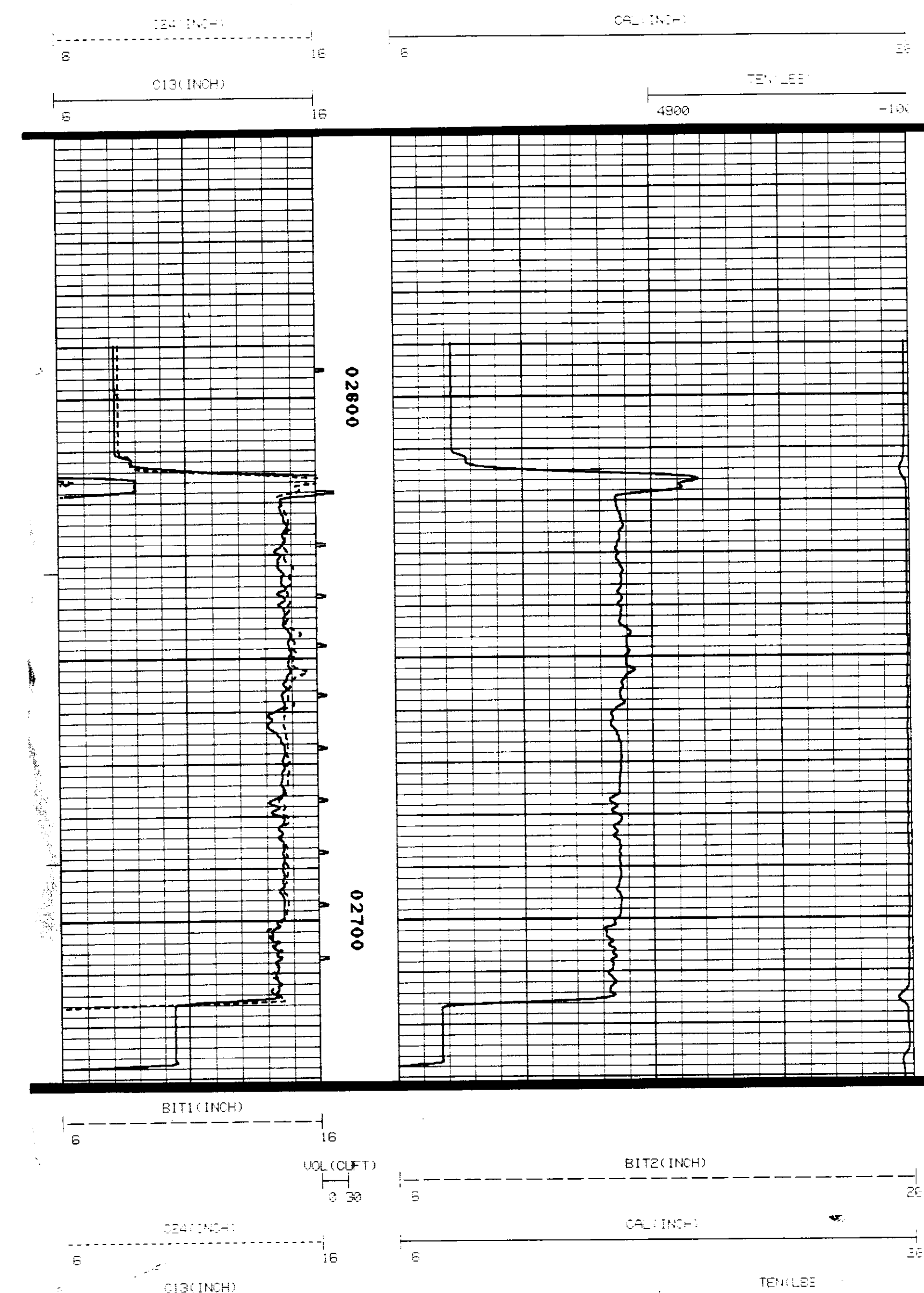
NAME	DEPTH INTERVAL	VALUE	UNITS
O.D.	2731 TO 2601	5.500	INCH

DISPLAY SCALE CHANGES
*** NONE ***

COMPANY: OREGON NATURAL GAS CORP
WELL NAME: IW 238-3
SERVICE: KC202A
REVISION: PSYCAL FEV 0508 VER 2

RUN: 1
TRIP: 1
DATE: 07/10/88
TIME: 15:34:21
MODE: RECORD

REPEAT SECTION



CURVE DELAYS

CURVE	DELAY	UNITS
C13	0.8	FT. IN
C24	0	FT. IN
GR	10.0	FT. IN

PARAMETERS

NAME	DEPTH INTERVAL	VALUE	UNITS
O.D.	2731 TO 2601	5.500	INCH

DISPLAY SCALE CHANGES
*** NONE ***

* CALIBRATION VERIFICATION SUMMARY *
* DATE 07/10/88 TIME 15:42:04 *
* RUN 1 *

LOG NAME 4CAL ASSET NO. 42216 UNIT NO. HL 6406
CALIBRATION ENTERED ON 07/10/88 AT 14:59:38

CURVE	MILLIVOLTS	SCALING FACTORS	ENGINEERING VALUES	UNITS
	LOW HIGH	ADD. MULT.	LOW HIGH	
DATE 07/10/88	CALIBRATION			TIME 14:59:38
C13	927.1 2566.9	0.912 0.0134	6.000 15.000	INCH
C24	1001.9 2543.0	0.148 0.0142	6.000 15.000	INCH
PRIMARY VERIFICATION NOT DONE				
DATE 07/10/88	BEFORE LOG VERIFICATION			TIME 15:31:50
C13	FE 1290.8	0.912 0.0134	E 7.996	INCH
C24	FE 1337.4	0.148 0.0142	E 7.859	INCH
DATE 07/10/88	AFTER LOG VERIFICATION			TIME 15:46:15
C13	E 1323.0	0.912 0.0134	E 8.173	INCH
C24	E 1400.1	0.148 0.0142	E 8.326	INCH

*** GR NOT CALIBRATED ***