

**ATLAS WIRELINE SERVICES**  
COMPUTED DIP LOG

WELL I.N. 23d - 3  
FIELD MIST  
COUNTY COLUMBIA  
STATE OREGON

COMPANY NORTHWEST NATURAL GAS CO.  
CORP. 224 - 3  
J.M. 23d - 3

Dr. 11,481 ft Above Ground  
Elev. 1181.85  
Date 10/15/51  
Dip 34.4

Location 2475 ft East 1/4 Sec. 29, T. 29S, R. 10E, S. 1E  
from the NE 1/4 corner of

Section 3 T. 29S, R. 10E, S. 1E

Payroll District 2  
Drillings Measured from 1181.85

Date 10/15/51  
Run No. 2  
Dip 34.4

Operator Dr. 11,481 ft Above Ground  
Elev. 1181.85

Depth - Cassner 2171.0  
Tool Record Interval 50.0  
Dip - Dip 34.4  
Dip - Dip 34.4

Tool Record Interval 50.0  
Dip - Dip 34.4  
Dip - Dip 34.4

Tool Record Interval 50.0  
Dip - Dip 34.4  
Dip - Dip 34.4

Tool Record Interval 50.0  
Dip - Dip 34.4  
Dip - Dip 34.4

Tool Record Interval 50.0  
Dip - Dip 34.4  
Dip - Dip 34.4

Tool Record Interval 50.0  
Dip - Dip 34.4  
Dip - Dip 34.4

Tool Record Interval 50.0  
Dip - Dip 34.4  
Dip - Dip 34.4

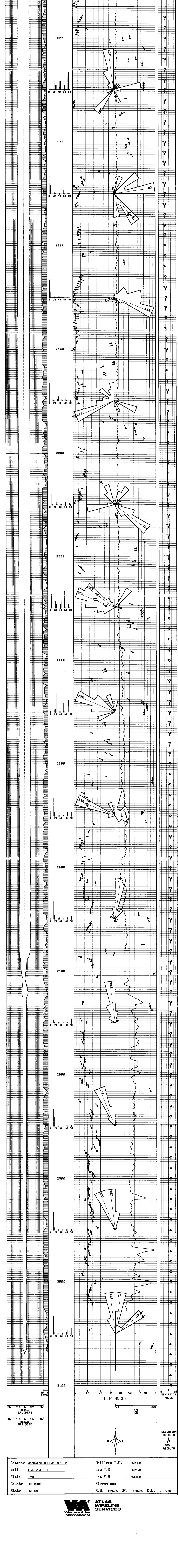
Tool Record Interval 50.0  
Dip - Dip 34.4  
Dip - Dip 34.4

Tool Record Interval 50.0  
Dip - Dip 34.4  
Dip - Dip 34.4

Remarks: S. = 48 inches 600-306 ft  
2 ft STEP, 8 ft WINDOW  
48" SEARCH LENGTH PRESENTED AT CUSTOMERS SPECIAL REQUEST.

Table with columns: EQUIPMENT DATA, RUN NO. 1, RUN NO. 2, RUN NO. Includes data for Tool Serial No., Orientation Type, Panel Serial No., Electronics No., Tape Unit Serial No., and Operator.

Table: MAGNETIC DECLINATION 29 EAST. VERTICAL DISPLACEMENT FOR VARIOUS HORIZONTAL DISTANCES AND ANGLES OF DIP. Columns: DIP in degrees, 100, 1000, 5280, DIP in degrees, 100, 1000, 5280.



Company NORTHWEST NATURAL GAS CO. Drillers T.D. 3079.0  
Well I.N. 23d - 3 Log T.D. 3071.0  
Field MIST Log F.R. 3068.0  
County COLUMBIA Elevations  
State OREGON K.B. 1199.25 OF. 1198.25 C.L. 1181.85

