

Schlumberger

GEOFRAME
PROCESSED
INTERPRETATION

True Vertical Depth AIT - BHC

2 inch Display

Using the following logs: FMS/FMI

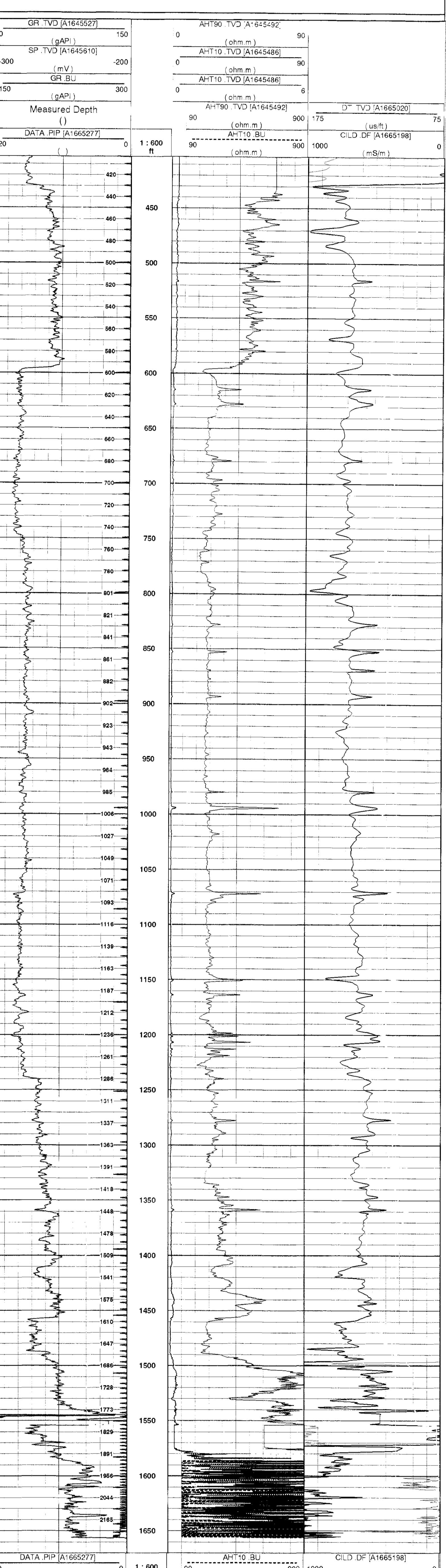
COMPANY: NORTHWEST NATURAL GAS
 WELL: IW-24BH-23-65
 FIELD: MIST
 COUNTY: COLUMBIA
 STATE: OREGON
 COUNTRY: OREGON
 Date Logged: 20-JUN-2000 Date Processed: 29-JUN-2000
 Well Location: 976.5' NORTH, 1256.3' EAST
 FROM THE SW SECTION CORNOR
 Elevations: KB: DF: 923ft GL: 905ft
 API Number: 36-009-00351 Job Number:

FOLD HERE The well name, location and borehole reference data were furnished by the customer.

Field Recording: Location: SACRAMENTO Software Version: 9C1-303 Engineer: V.K-AN
 Office Recording: ICS Center: Bakersfield ICS Baseline: Log Analyst: T.Quinlan

Mud and Borehole Measurements:
 Rm @ Measured Temperature: 0.266ohm.m @ 58degF BHT: 212degF Bitsize: 7.875in
 Rmf @ Measured Temperature: 0.281ohm.m @ 19degF Type Fluid in Hole: XCD/KCL
 Rmc @ Measured Temperature: 0.1454ohm.m @ 18degF Mud Density: 8.6lbm/gal

Remarks: MAXIMUM HOLE DEVIATION: 92 DEG LOGGED WITH TLC EQUIPMENT



DATA.PIP [A1665277] Measured Depth (ft) GR.BU (gAPI) SP.TVD [A1645610] (mV) GR.TVD [A1645527] (gAPI)

AHT10.BU (ohm.m) AHT90.TVD [A1645492] (ohm.m) AHT10.TVD [A1645486] (ohm.m) D.T.TVD [A1665020] (us/ft) CILD.DF [A1665198] (mS/m) DT.TVD [A1665020] (us/ft)

Company: NORTHWEST NATURAL GAS
 Well: IW-24BH-23-65
 FIELD: MIST
 COUNTY: COLUMBIA
 STATE: OREGON

Date Logged: 20-JUN-2000 Date Processed: 29-JUN-2000
 Well Location: 976.5' NORTH, 1256.3' EAST
 FROM THE SW SECTION CORNOR

Elevations: KB: DF: 923ft GL: 905ft
 API Number: 36-009-00351 Job Number:

