

**True Vertical Depth  
AIT-BHC**

2 inch Display

Using the following logs:

COMPANY: NORTHWEST NATURAL GAS  
 WELL: I.W. 24C-23-65  
 FIELD: CALVIN CREEK GAS STORAGE  
 COUNTY: COLUMBIA  
 STATE: OREGON  
 COUNTRY:  
 DATE LOGGED: 28-APR-2000 Date Processed: 18-MAY-2000  
 WELL LOCATION: 985.3' N & 1258.4' E from the SW corner of 23  
 FROM THE SW CORNER OF 23  
 ELEVATIONS: KB: 922.5ft DF: 922.3ft GL: 905ft  
 API NUMBER: 36-009-00350 Job Number:

FOLD HERE The well name, location and borehole reference data were furnished by the customer.

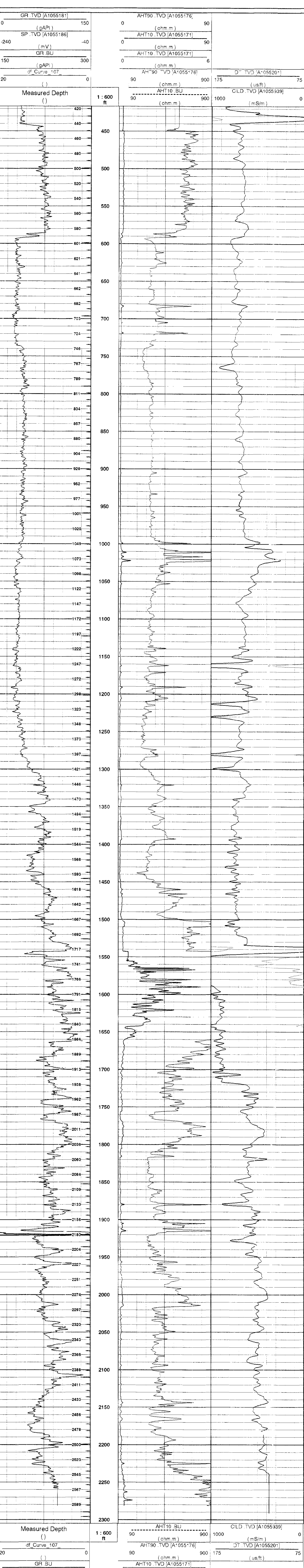
All interpretations are on a non-proprietary basis and are not intended to be used for legal or financial purposes. Schlumberger is not responsible for any loss of data or equipment damage or expense incurred as a result of any interpretation made by any of our employees. These interpretations are also subject to our General Terms and Conditions as set out in our current Price Book.

Field Recording: Location: Sacramento Software Version: Engineer: V. Khan

Office Recording: ICS Center: Bakersfield ICS Baseline: Log Analyst: T. Quinlan

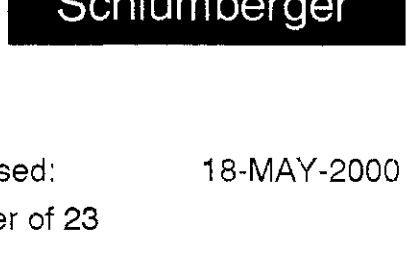
Mud and Borehole Measurements:  
 Rm @ Measured Temperature: @ BHT: 92degF Bitsize: 7.875in  
 Rmf @ Measured Temperature: @ Type Fluid in Hole:  
 Rmc @ Measured Temperature: @ Mud Density: 8.8lbm/gal

Remarks:



Measured Depth (ft) 1:600 ft  
 df Curve 107  
 GR BU  
 SP TVD [A1055186]  
 GR TVD [A1055181]  
 AHT90 TVD [A1055176]  
 AHT10 TVD [A1055171]  
 AHT10 BU  
 CILD TVD [A1055339]  
 DT TVD [A1055201]

Company: NORTHWEST NATURAL GAS  
 Well: I.W. 24C-23-65  
 FIELD: CALVIN CREEK GAS STORAGE  
 COUNTY: COLUMBIA  
 STATE: OREGON



Date Logged: 28-APR-2000 Date Processed: 18-MAY-2000  
 Well Location: 985.3' N & 1258.4' E from the SW corner of 23  
 FROM THE SW CORNER OF 23

Elevations: KB: 922.5ft DF: 922.3ft GL: 905ft  
 API Number: 36-009-00350 Job Number: