



ATLAS SERVICES
BHC ACQUISITION

WESTERN ADAS International
5" = 100'

FILE NO. _____
WELL _____

COMPANY OREGON NATURAL GAS DEVELOPMENT CORP.
FIELD MIST
COUNTY OREGON
STATE OR.

LOCATION: 1500 95 N. 4 2919.5' H
FROM EA CORNER OF: ODF/COR 017-630
SEC 12 T14N R3E S4

PERMANENT DATUM Q. ELEV. 798.25
LOOKING REFERRED FROM NG 801.85
DRILLING REFERRED FROM DE 798.25

DATE 12-28-90
SERVICE ORDER 65511
DEPTH-DRILLER 2145'
DEPTH-LOGGER 2151'
BOTTOM LOGGED INTERVAL 2151'-
TOP LOGGED INTERVAL 2180'-

LOGGING - DRILLER B 5/8" 2180'
LOGGING - LOGGER Z 1/8" 2180'

WELL FLUID LOSS 9.6
SOURCE OF SAMPLE FLOL INC 5.2
PH AT WERS. TEMP. 1.85 8.45 DEG. F
PHC AT WERS. TEMP. 1.35 8.45 DEG. F
SOURCE OF PH / PHC M 58 8.186 DEG. F
PH AT PHC REGULATION 3.88
TEMP. SEC. TEMP. DEG. F 126
TAIPE NO. / LOC. 5293
RECORDED BY M. HINDS
CHECKED BY MR. ROTH

IN MAKING INTERPRETATIONS OF LOGS OUR EMPLOYEES WILL GIVE CUSTOMER THE BEST FIT OF THEIR BEST JUDGMENT, BUT SINCE ALL INTERPRETATIONS ARE OPINIONS BASED ON MEASUREMENTS, WE CANNOT AND WE DO NOT GUARANTEE THE FREQUENCY OR CORRECTNESS OF ANY INTERPRETATION. WE SHALL NOT BE LIABLE FOR DAMAGES OF ANY KIND, INCLUDING REASONABLE ATTORNEY'S FEES, ARISING FROM ANY INTERPRETATION MADE BY ANY OF OUR EMPLOYEES.

REMARKS RUN (2)

RUN	TRIP	TOOL	SERIAL NO.	SERIES NO.	POSITION
2	2	DIFL	77837	1503XA	1.5 SO
2	2	AC	79731	1603/1609	CENT.
2	2	GR	72384	1309XA	CENT.
2	2	CAL	38088	4202XA	47FRM

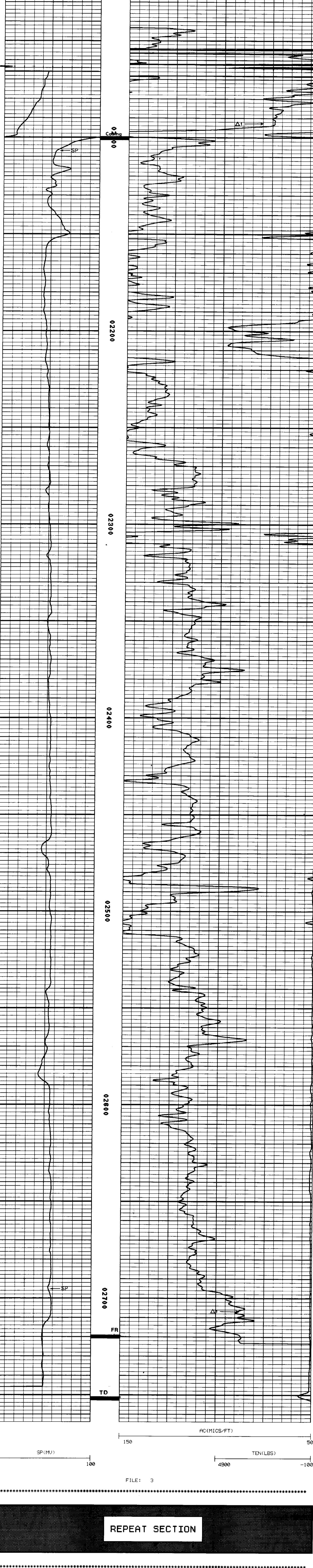
PARAMETERS

NAME	DEPTH INTERVAL	VALUE	UNITS
A	2764 TO 2016	1.000	
DEL-T F	2764 TO 2016	189.000	MICS/FT
DEL-T M	2764 TO 2016	55.500	MICS/FT
DEL-T S	2764 TO 2016	110.000	MICS/FT
M	2764 TO 2016	2.000	
O.D.	2764 TO 2016	5.500	INCH
PORA	2764 TO 2016		WYLLIE

DISPLAY SCALE CHANGES

*** NONE ***

COMPANY: OREGON NATURAL GAS DEVELOPMENT CORP. RUN: 2
WELL NAME: IU 320-10 TRIP: 2
SERVICE: KC214N FILE: 3 DATE: 12/27/90 TIME: 22:00:08
REVISION: FSYS256 REV:002 UER:12.0 MODE: PLAYBACK



REPEAT SECTION

FILE: 2

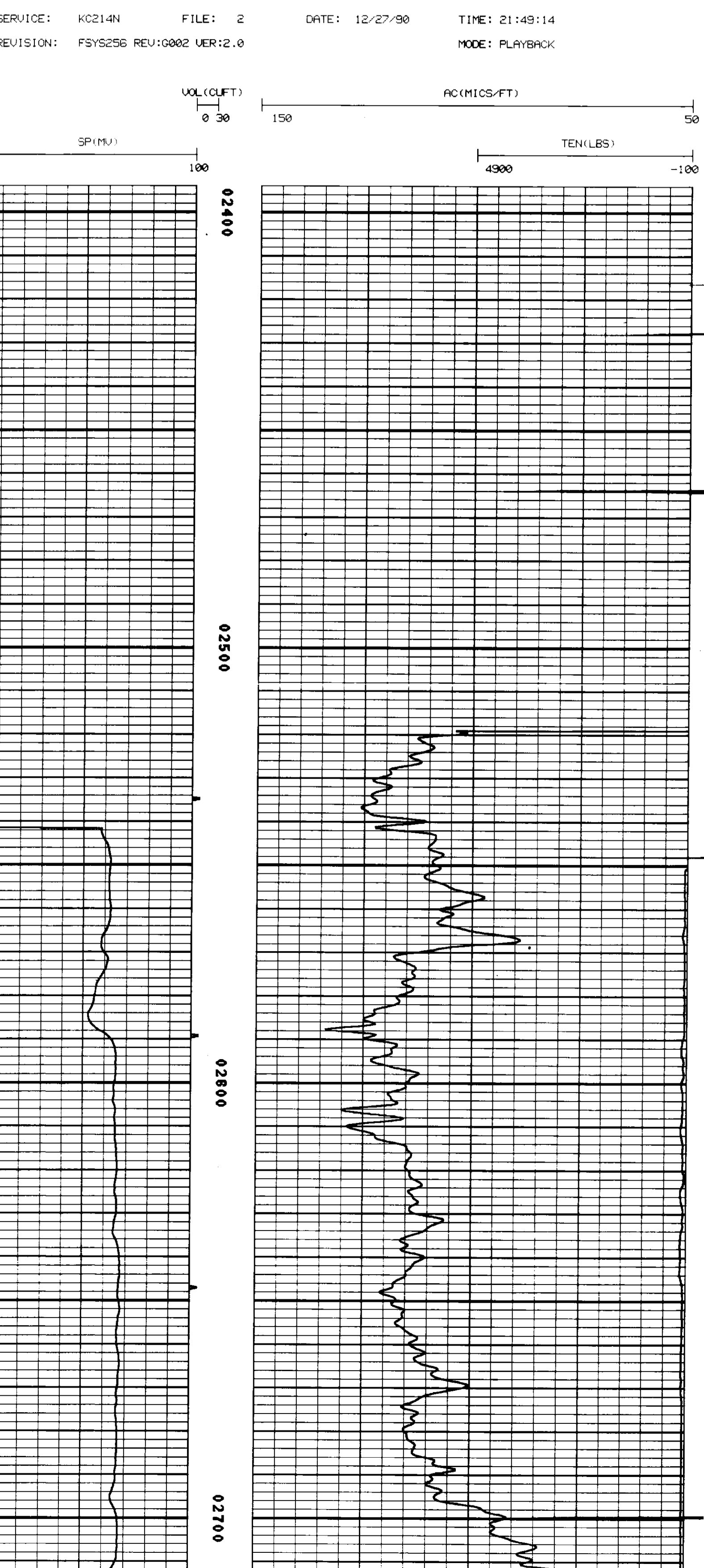
PARAMETERS

NAME	DEPTH INTERVAL	VALUE	UNITS
A	2763 TO 2495	1.000	
DEL-T F	2763 TO 2495	189.000	MICS/FT
DEL-T M	2763 TO 2495	55.500	MICS/FT
DEL-T S	2763 TO 2495	110.000	MICS/FT
M	2763 TO 2495	2.000	
O.D.	2763 TO 2495	5.500	INCH
PORA	2763 TO 2495		WYLLIE

DISPLAY SCALE CHANGES

*** NONE ***

COMPANY: OREGON NATURAL GAS DEVELOPMENT CORP. RUN: 2
WELL NAME: IU 320-10 TRIP: 2
SERVICE: KC214N FILE: 2 DATE: 12/27/90 TIME: 21:49:14
REVISION: FSYS256 REV:002 UER:12.0 MODE: PLAYBACK



FILE: 2