



ATLAS WIRELINES SERVICES
2" = 100'

CONCRETE DENSILOG®
GAMMA RAY
CONCRETE NEUTRON

FILE NO. _____
COMPANY **NORTHWEST NATURAL GAS**
WELL **ORCON NUTRIB GDS DEVELOPMENT CORP.**
MIST
FIELD **MIST**
COUNTY **COLUMBIA** STATE **OR.**

LOCATION: **1500' N. & 2519.6' W FROM E/4 CORNER OF:**
SEC 10 T12P1N R3E5N
ELEVATIONS
PERMANENT BRUM **11.4** FT. ABOVE P.O.
LOGGING MEASURED FROM **KB** OF **KB** 801.155'
DRILLING MEASURED FROM **KB** OF **KB** 790.25'

DATE **12-28-90**
SERVISE ORDER **15511**
DEPTH-DRILLER **Z147**
DEPTH-LOGGER **Z136**
BOTTOM-LOGGED **Z146**
TOP-LOGGED **Z100**
CORING - DRILLER **B 5/8"**
CORING - LOGGER **B 2100'**

BIT SIZE **7 7/8"**
TYPE FLUID IN HOLE **CEL**
DENSITY / VISCOSITY **9.6** **41**
PH / FLUID LOSS **8.7** **5.2**
SOURCE OF SAMPLE **FLO LINE**
RM AT MERS. TEMP. **1.05** **0.65 DEG. F**
RM AT MERS. TEMP. **1.15** **0.65 DEG. F**
RM AT MERS. TEMP. **1.35** **0.65 DEG. F**
SOURCE OF RM / RMC **M** **M**
RM AT BHT **5.65** **0.166 DEG. F**

LINE SINCE CIRCULATION **5 HRS**
MIX. REC. TEMP. DEG. F **106**
EQUIP. NO. / LOC. **5999**
RECORDED BY **M. HINDS**
WITNESSED BY **M. ROH/THORS**

IN MAKING INTERPRETATIONS OF LOGS OUR EMPLOYEES WILL GIVE CUSTOMER THE BENEFIT OF THEIR BEST JUDGMENT. BECAUSE ALL INTERPRETATIONS ARE OPINIONS BASED ON INTERFERENCES FROM ELECTRICAL ROTHER MEASUREMENTS WE CANNOT AND DO NOT GUARANTEE THE ACCURACY OR CONSISTENCY OF ANY INTERPRETATION. WE SHALL NOT BE LIABLE OR RESPONSIBLE FOR ANY LOSS, DAMAGE OR EXPENSES INCURRED BY CUSTOMER INCURRED OR SUSTAINED BY THE CUSTOMER RESULTING FROM ANY INTERPRETATION MADE BY ANY OF OUR EMPLOYEES.

REMARKS **RUN (2)**
VOL COMPUTED FOR 5.5" CASING.

EQUIPMENT DATA

RUN	TRIP	TOOL	SERIAL NO.	SERIES NO.	POSITION
2	2	CDL	7417B	2227XA	DE-CENT
2	2	CDL	7417B	2227XA	1/ARM
2	2	CN	52364	2435XA	DE-CENT
2	2	GR	60484	1309XA	DE-CENT
2	2	TEMP			
2	2	PCM	73003	3506XA	DE-CENT

FILE: 2

CURVE DELAY REPORT

CURVE	PHYS. DELAY	UNITS
SSD	0.3	FT. IN
LSD	0	FT. IN
CAL	0.3	FT. IN
SSN	10.0	FT. IN
LSN	10.0	FT. IN
TEMP	10.0	FT. IN
DTEM	10.0	FT. IN

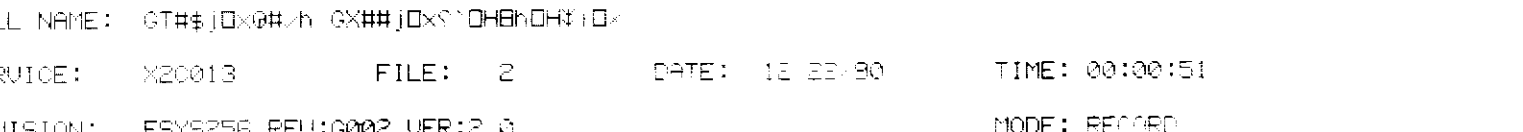
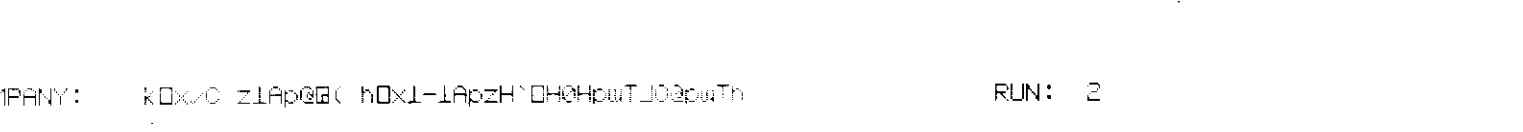
PARAMETERS

NAME	DEPTH	INTERVAL	VALUE	UNITS
RA	2753 TO	2523	0.000	
CAL COR	2753 TO	2523	0.000	CAL
CASING CN	2753 TO	2523	NOT ACTIVE	
OHISM CN	2753 TO	2523	NOT ACTIVE	
OHISM DEN	2753 TO	2523	NOT ACTIVE	
M	2753 TO	2523	0.000	
MATRIX	2753 TO	2523	SANDSTONE	
RHO F	2753 TO	2523	0.500	INCH
RHO M	2753 TO	2523	0.830	G/CC
RHO P	2753 TO	2523	0.650	G/CC
SALINITY	2753 TO	2523	0.000	PPM

DISPLAY SCALE CHANGES

*** NONE ***

COMPANY: **KD&C ZLAPGB HDXL-LAPZH-DHCHWUTJ0300TH** RUN: 2
WELL NAME: **GT#S J0X#LH G##J0X-DHCHWUTJ0300TH**
SERVICE: **X20013** FILE: 2 DATE: **12/28/90** TIME: **00:00:51**
REVISION: **FSYS256 REV:0002 VER:2.0** MODE: **RECORD**



FILE: 1

REPEAT SECTION

FILE: 1

CURVE DELAY REPORT

CURVE	PHYS. DELAY	UNITS
SSD	0.3	FT. IN
LSD	0	FT. IN
CAL	0.3	FT. IN
SSN	10.0	FT. IN
LSN	10.0	FT. IN
TEMP	10.0	FT. IN
DTEM	10.0	FT. IN

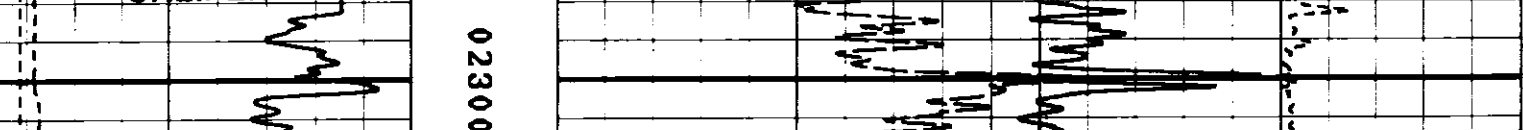
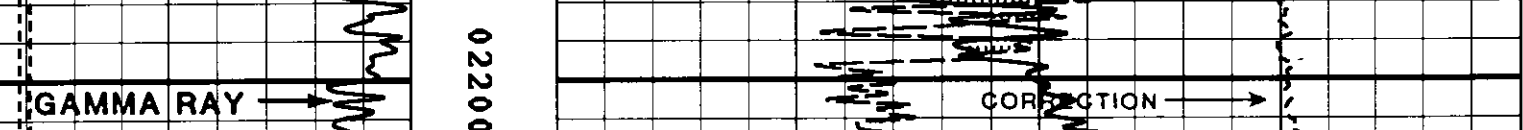
PARAMETERS

NAME	DEPTH	INTERVAL	VALUE	UNITS
RA	2753 TO	2523	0.000	
CAL COR	2753 TO	2523	0.000	CAL
CASING CN	2753 TO	2523	NOT ACTIVE	
OHISM CN	2753 TO	2523	NOT ACTIVE	
OHISM DEN	2753 TO	2523	NOT ACTIVE	
M	2753 TO	2523	0.000	
MATRIX	2753 TO	2523	SANDSTONE	
RHO F	2753 TO	2523	0.500	INCH
RHO M	2753 TO	2523	0.830	G/CC
RHO P	2753 TO	2523	0.650	G/CC
SALINITY	2753 TO	2523	0.000	PPM

DISPLAY SCALE CHANGES

*** NONE ***

COMPANY: **KD&C ZLAPGB HDXL-LAPZH-DHCHWUTJ0300TH** RUN: 2
WELL NAME: **GT#S J0X#LH G##J0X-DHCHWUTJ0300TH**
SERVICE: **X20013** FILE: 1 DATE: **12/27/90** TIME: **23:50:27**
REVISION: **FSYS256 REV:0002 VER:2.0** MODE: **RECORD**



FILE: 1