

ATLAS WIRELINE SERVICES
BHC ACQUISITION

DIP INDUCTION FOCUSED LOG
CHMRA RAY

FILE NO. 111-322-10
WELL IM 322-10
COMPANY OREGON NATURAL GAS DEVELOPMENT CORP.
FIELD MIST
COUNTY COLUMBIA
STATE OR

LOCATION: 1500 95 N & 2519 E
FROM E/W CORNER OF:
SEC. 10 T. 14 N. R. 25 E
RCE 5M

PERMIT DRUM Q
LOGGING MEASURED FROM NG 11.4
ELEV. 790.25
FT. ABOVE P.O.
DRILLING MEASURED FROM NG 11.4
ELEV. 790.25

OTHER SERVICES:
BHC-AC/GR
CDL/EN/GR
DIP/LOG

RUN DATE 12-28-90
SERVISE ORDER 655811
DEPTH-DRILLER 2749
DEPTH-LOGGER 2751

TOP LOGGED INTERVAL 2100'
BOTTOM LOGGED INTERVAL 2749'
OSING - DRILLER 8 5/8"
OSING - LOSER 2100'

TYPE FLUID IN HOLE OIL
BIT SIZE 7 7/8"
DENSITY / VISCOSITY 9.6
PH / FLUID LOSS 41
SOURCE OF SAMPLE 4-7
RHT MEAS. TEMP. 1.95
RHT MEAS. TEMP. 1.75
RHT MEAS. TEMP. 1.35
SOURCE OF RHT / RHC 1-1
RHT MEAS. TEMP. 1.68
LINE SLOPE CALCULATION 3.68 DEG. F
HEAT. REC. TEMP. LOG. F 1065 DEG. F
EQUIP. NO. / LOG. 63793
RECORDED BY H.HINDS
WITNESSED BY MR. ROTH

IN MAKING INTERPRETATIONS OF LOGS OUR EMPLOYEES WILL GIVE CUSTOMER THE BENEFIT OF THEIR BEST JUDGMENT, BUT SINCE ALL INTERPRETATIONS ARE OPINIONS OR OTHER MESSAGES FROM ELECTRICAL OR OTHER INSTRUMENTS, WE CANNOT AND WE DO NOT GUARANTEE THE ACCURACY OR CORRECTNESS OF ANY INTERPRETATION. WE SHALL NOT BE LIABLE OR RESPONSIBLE FOR ANY LOSS, COST, DAMAGES OR EXPENSES WHATSOEVER INCURRED OR SUFFERED BY THE CUSTOMER RESULTING FROM AN INTERPRETATION MADE BY ANY OF OUR EMPLOYEES.

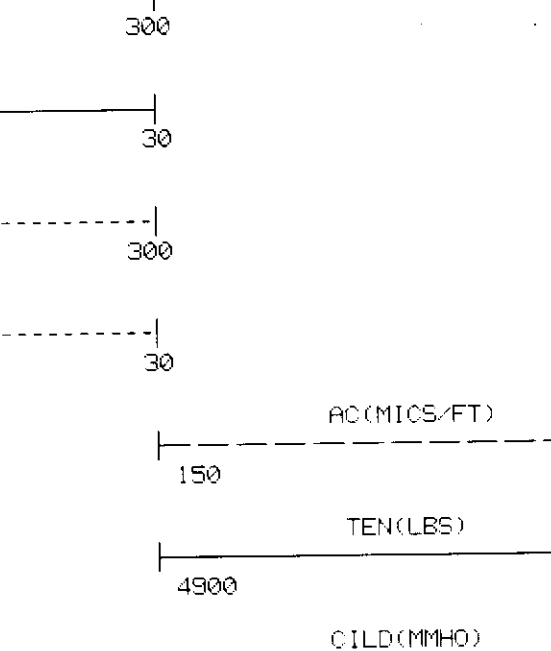
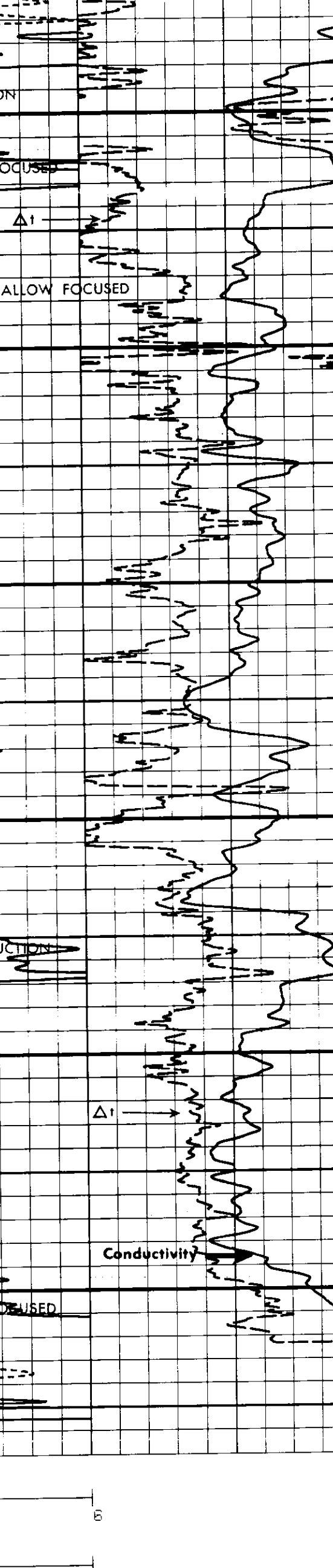
REMARKS RUN (2)

EQUIPMENT DATA

| RUN | TRIP | TOOL | SERIAL NO. | SERIES NO. | POSITION |
|-----|------|------|-------------|------------|----------|
| 2 | 2 | DIFL | 77837 | 1503XR | 1.5 SO |
| 2 | 2 | RC | 75731/VENT1 | 1603/1609 | CENT. |
| 2 | 2 | GR | 72384 | 1305XR | CENT. |
| 2 | 2 | CAL | 30288 | 4222XR | 4/ARM |

COMPANY: OREGON NATURAL GAS DEVELOPMENT CORP.
WELL NAME: IM 322-10
SERVICE: K0214N
REVISION: FSYS256 REV:0002 UER:2.0

RUN: 2
TRIP: 2
DATE: 12/27/90
MODE: RECORD



FILE: 3

REPEAT SECTION

FILE: 2

CURVE DELAY REPORT

| CURVE | PHYS. DELAY | UNITS |
|-------|-------------|--------|
| CFCC | 0.0 | FT./IN |
| CILM | 0.0 | FT./IN |
| CILD | 0.3 | FT./IN |
| CS | 0.3 | FT./IN |
| CAL | 0.0 | FT./IN |
| RCO | 0.0 | FT./IN |
| RC | 0.0 | FT./IN |

PARAMETERS

| NAME | DEPTH INTERVAL | VALUE | UNITS |
|---------|----------------|---------|---------|
| A | 2763 TO 2493 | 1.000 | MICS/FT |
| DEL-T F | 2763 TO 2493 | 55.500 | MICS/FT |
| DEL-T S | 2763 TO 2493 | 110.000 | MICS/FT |
| N | 2763 TO 2493 | 2.000 | INCH |
| O.D. | 2763 TO 2493 | 5.500 | INCH |
| P.O.R.A | 2763 TO 2493 | UNLITE | |

DISPLAY SCALE CHANGES

*** NONE ***

COMPANY: OREGON NATURAL GAS DEVELOPMENT CORP.
WELL NAME: IM 322-10
SERVICE: K0214N
REVISION: FSYS256 REV:0002 UER:2.0

RUN: 2
TRIP: 2
DATE: 12/27/90
MODE: RECORD

FILE: 2