

WESTERN NATURAL GAS DEVELOPMENT CORP.
OREGON NATURAL GAS DEVELOPMENT CORP.
FILE NO. 101-10
WELL 101-10
COUNTY COUMBER
FIELD MIST
STRIKE OR.

COMPANY NORTH EAST
LOCATION: 1500 55' N. 4251.5' E. 4
FROM 2/4 CORNER OF
SEC 12 T14P24N R3E24E
ELEVATION 89
ELECT. 11.4 FT. FROM P.D.
ELEVATION 790.25
ELEVATION 89
ELEVATION 790.25

CONDUCTIVITY 2141
RESISTIVITY 2141
TEMPERATURE 2141
DEPTH-DRILLER 2141
DEPTH-LOGGER 2141
BOTTOM LOGGED INTERVAL 2141-2142
CORRECTION INTERVAL 2141-2142
CORRECTION INTERVAL 2141-2142
CORRECTION INTERVAL 2141-2142

LOGGING UNIT 2141
LOGGING UNIT 2141
LOGGING UNIT 2141
LOGGING UNIT 2141
LOGGING UNIT 2141
LOGGING UNIT 2141
LOGGING UNIT 2141
LOGGING UNIT 2141

LOGGING UNIT 2141
LOGGING UNIT 2141
LOGGING UNIT 2141
LOGGING UNIT 2141
LOGGING UNIT 2141
LOGGING UNIT 2141
LOGGING UNIT 2141
LOGGING UNIT 2141

LOGGING UNIT 2141
LOGGING UNIT 2141
LOGGING UNIT 2141
LOGGING UNIT 2141
LOGGING UNIT 2141
LOGGING UNIT 2141
LOGGING UNIT 2141
LOGGING UNIT 2141

LOGGING UNIT 2141
LOGGING UNIT 2141
LOGGING UNIT 2141
LOGGING UNIT 2141
LOGGING UNIT 2141
LOGGING UNIT 2141
LOGGING UNIT 2141
LOGGING UNIT 2141

LOGGING UNIT 2141
LOGGING UNIT 2141
LOGGING UNIT 2141
LOGGING UNIT 2141
LOGGING UNIT 2141
LOGGING UNIT 2141
LOGGING UNIT 2141
LOGGING UNIT 2141

IN MAKING INTERPRETATIONS OF LOGS OUR EMPLOYEES WILL GIVE OPINION, BUT SINCE OUR INTERPRETATIONS ARE OPINIONS BASED ON INFORMATION FROM ELECTRIC LOGS AND OTHER SOURCES WE CANNOT BE HELD RESPONSIBLE FOR ANY INTERPRETATION. WE SHALL NOT BE LIABLE FOR REPERCUSSIONS OF OUR EMPLOYEES OR EXPENSES INCURRED BY ANY OF OUR EMPLOYEES.

REMARKS RUN (2)
VOL COMPUTED FOR 5.5" CASING.

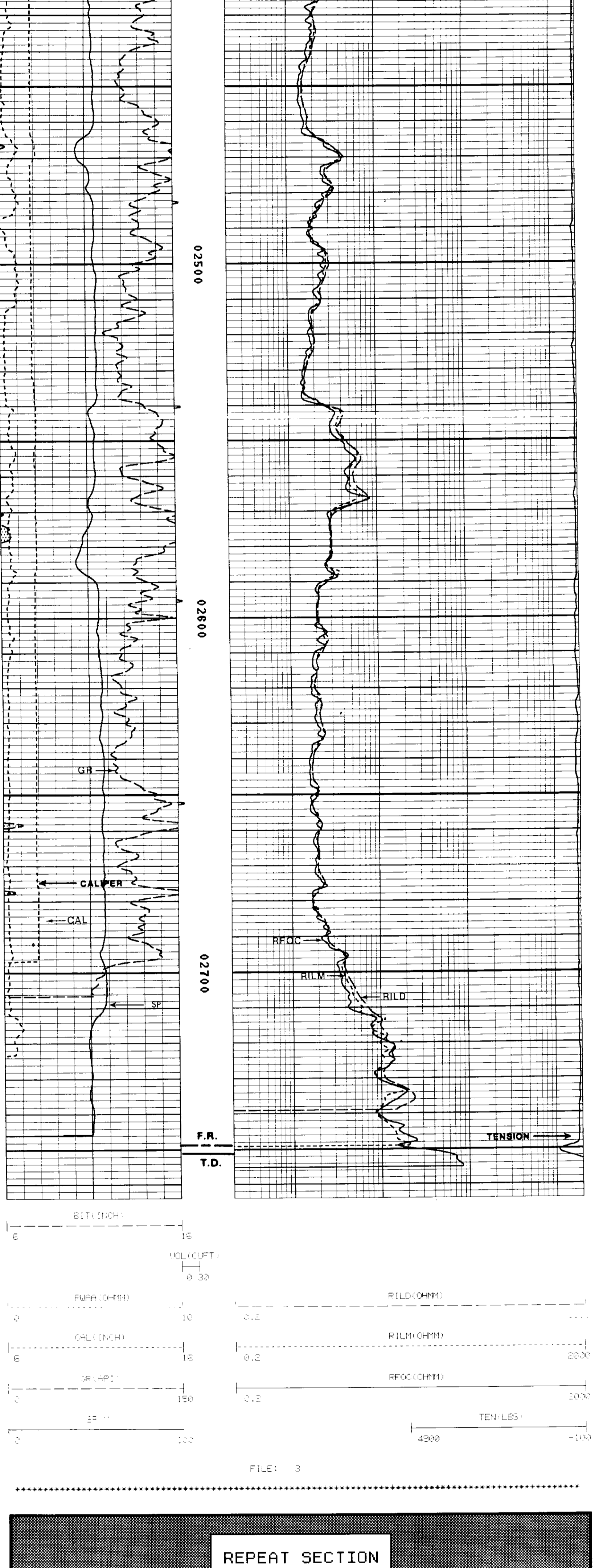
RUN	TRIP	TOOL	SERIAL NO.	SERIES NO.	POSITION
2	2	OILF	77837	1522XF	1 S SQ
2	2	AC	79731/VENT1	1623/1629	CENT.
2	2	GR	72384	1302XF	CENT.
2	2	CAL	38088	4282XF	47/ARM

PARAMETERS

NAME	DEPTH	INTERVAL	VALUE	UNITS
A	2141	TO 2016	1.000	
DEL-T F	2141	TO 2016	189.000	MICS/FT
DEL-T M	2141	TO 2016	55.500	MICS/FT
DEL-T S	2141	TO 2016	110.000	MICS/FT
M	2141	TO 2016	8.000	
O.D.	2141	TO 2016	5.500	INCH
FORM	2141	TO 2016		

DISPLAY SCALE CHANGES
*** NONE ***

COMPANY: OREGON NATURAL GAS DEVELOPMENT CORP. RUN: 2
WELL NAME: 101-10 TRIP: 2
SERVICE: 101-10 FILE: 3 DATE: 12-27-90 TIME: 22:00:09
REVISION: PS15256 REV:0002 VER:3.0 MODE: PLAYBACK



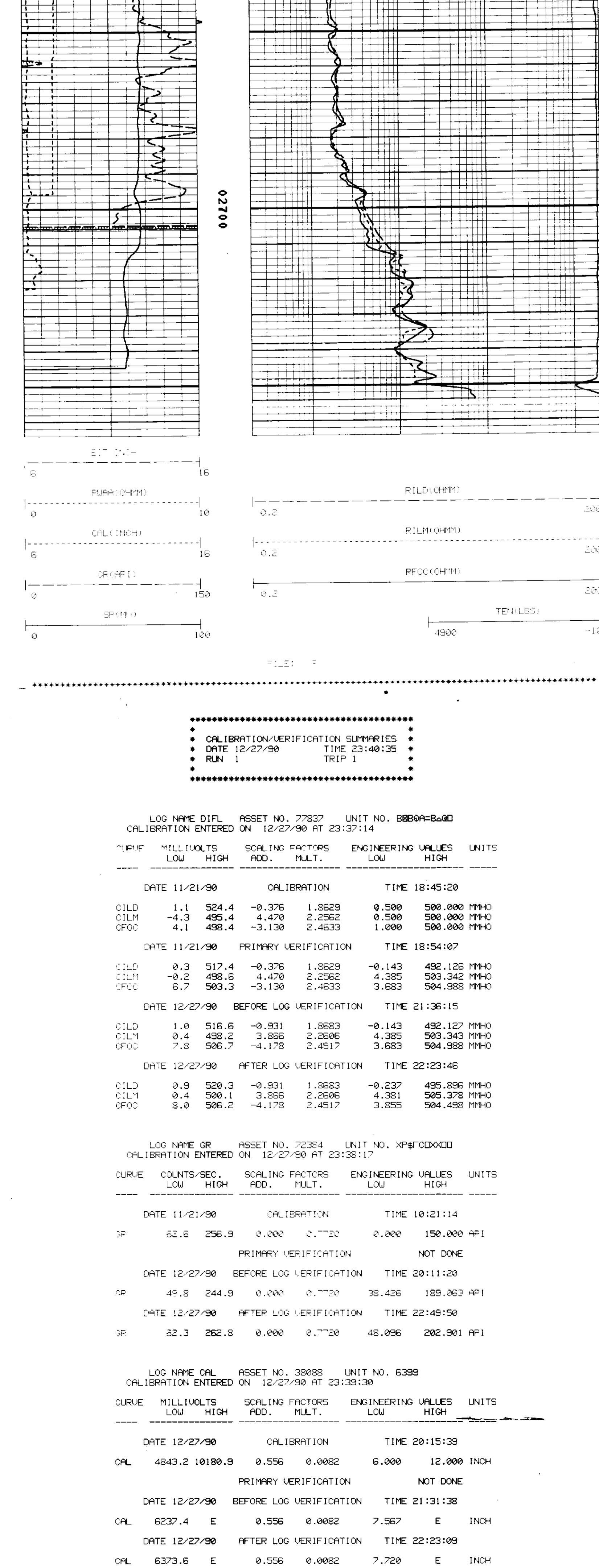
REPEAT SECTION

PARAMETERS

NAME	DEPTH	INTERVAL	VALUE	UNITS
A	2141	TO 2016	1.000	
DEL-T F	2141	TO 2016	189.000	MICS/FT
DEL-T M	2141	TO 2016	55.500	MICS/FT
DEL-T S	2141	TO 2016	110.000	MICS/FT
M	2141	TO 2016	8.000	
O.D.	2141	TO 2016	5.500	INCH
FORM	2141	TO 2016		

DISPLAY SCALE CHANGES
*** NONE ***

COMPANY: OREGON NATURAL GAS DEVELOPMENT CORP. RUN: 2
WELL NAME: 101-10 TRIP: 2
SERVICE: 101-10 FILE: 3 DATE: 12-27-90 TIME: 21:49:14
REVISION: PS15256 REV:0002 VER:3.0 MODE: PLAYBACK



REPEAT SECTION

PARAMETERS

NAME	DEPTH	INTERVAL	VALUE	UNITS
A	2141	TO 2016	1.000	
DEL-T F	2141	TO 2016	189.000	MICS/FT
DEL-T M	2141	TO 2016	55.500	MICS/FT
DEL-T S	2141	TO 2016	110.000	MICS/FT
M	2141	TO 2016	8.000	
O.D.	2141	TO 2016	5.500	INCH
FORM	2141	TO 2016		

DISPLAY SCALE CHANGES
*** NONE ***

COMPANY: OREGON NATURAL GAS DEVELOPMENT CORP. RUN: 2
WELL NAME: 101-10 TRIP: 2
SERVICE: 101-10 FILE: 3 DATE: 12-27-90 TIME: 23:37:14
REVISION: PS15256 REV:0002 VER:3.0 MODE: PLAYBACK

LOG NAME DIFL ASSET NO. 77837 UNIT NO. BB89A-B-040
CALIBRATION ENTERED ON 12/27/90 AT 23:37:14

CURVE	MILLIVOLTS	LOW	HIGH	SCALING FACTORS	ADD.	MULT.	ENGINEERING VALUES	LOW	HIGH	UNITS	
DATE 11/21/90	CALIBRATION										TIME 18:45:20
CILD	1.1	524.4	-0.376	1.8629	0.500		500.000	500.000	500.000	MHO	
CILM	-4.3	495.4	-4.470	2.2562	0.500		500.000	500.000	500.000	MHO	
OFOC	4.1	503.3	-3.130	2.4633	1.000		500.000	500.000	500.000	MHO	
DATE 11/21/90	PRIMARY VERIFICATION										TIME 18:54:07
CILD	0.3	517.4	-0.376	1.8629	-0.143		492.126	492.126	492.126	MHO	
CILM	-0.2	498.6	-4.470	2.2562	4.385		503.343	503.343	503.343	MHO	
OFOC	6.7	503.3	-3.130	2.4633	3.683		504.988	504.988	504.988	MHO	
DATE 12/27/90	BEFORE LOG VERIFICATION										TIME 21:36:15
CILD	1.0	516.6	-0.931	1.8683	-0.143		492.127	492.127	492.127	MHO	
CILM	0.4	498.6	-3.886	2.2606	4.385		503.343	503.343	503.343	MHO	
OFOC	7.8	506.7	-4.178	2.4517	3.683		504.988	504.988	504.988	MHO	
DATE 12/27/90	AFTER LOG VERIFICATION										TIME 22:23:46
CILD	0.9	520.3	-0.931	1.8683	-0.237		495.896	495.896	495.896	MHO	
CILM	0.4	500.1	-3.886	2.2606	4.381		505.378	505.378	505.378	MHO	
OFOC	8.0	506.2	-4.178	2.4517	3.855		504.498	504.498	504.498	MHO	

LOG NAME OR ASSET NO. 72384 UNIT NO. XP4F000DD
CALIBRATION ENTERED ON 12/27/90 AT 23:38:17

CURVE	COUNTS/SEC.	LOW	HIGH	SCALING FACTORS	ADD.	MULT.	ENGINEERING VALUES	LOW	HIGH	UNITS	
DATE 11/21/90	CALIBRATION										TIME 10:21:14
IF	62.6	256.9	0.000	0.7720	0.000		150.000	150.000	150.000	HF1	
DATE 12/27/90	PRIMARY VERIFICATION										TIME 20:11:20
IF	49.8	244.9	0.000	0.7720	38.426		189.062	189.062	189.062	HF1	
DATE 12/27/90	AFTER LOG VERIFICATION										TIME 22:48:50
IF	52.3	262.8	0.000	0.7720	48.096		202.901	202.901	202.901	HF1	

LOG NAME CAL ASSET NO. 38088 UNIT NO. 6399
CALIBRATION ENTERED ON 12/27/90 AT 23:38:30

CURVE	MILLIVOLTS	LOW	HIGH	SCALING FACTORS	ADD.	MULT.	ENGINEERING VALUES	LOW	HIGH	UNITS	
DATE 12/27/90	CALIBRATION										TIME 20:15:39
CAL	4843.2	10180.9	0.556	0.0082	6.000		12.000	12.000	12.000	INCH	
DATE 12/27/90	PRIMARY VERIFICATION										TIME 21:31:38
CAL	6237.4	E	0.556	0.0082	7.567		3.000	3.000	3.000	E INCH	
DATE 12/27/90	AFTER LOG VERIFICATION										TIME 22:23:09
CAL	6373.6	E	0.556	0.0082	7.720		3.000	3.000	3.000	E INCH	