



ATLAS  
WIRELINES  
SERVICES  
5" = 100'

PRODIP™

FILE NO. \_\_\_\_\_  
 COMPANY OREGON NATURAL GAS DEVELOPMENT CORP.  
 WELL LM 32C-10  
 FIELD MIST  
 COUNTY COLUMBIA STATE OR.  
 LOCATION:  
 1500 95' N.A. 2519.6' W  
 FROM E74 CORNER OF:  
 SEC 10 T14N R10E S4

PERMITS PERMIT 0104 DL 11.4 ELEV. 790.25  
 LOGGING MEASURED FROM KB 801.58'  
 DRILLING MEASURED FROM DL 790.25'

DATE 12-16-90  
 MAIN SERVICE ORDER 655093  
 DEPTH-DRILLER 2114  
 BOTTOM-LOGGED INTERVAL 2090  
 LOG-LOGGED INTERVAL 1000  
 DRISNG - DRILLER 13 5/8" @ 531'  
 DRISNG - LOGGER N/A

OTHER SERVICES:  
 BUREAU OF LAND MANAGEMENT  
 COLLECTOR  
 DIPILOG

IN MAKING INTERPRETATIONS OF LOGS OUR EMPLOYEES WILL GIVE CUSTOMER THE BENEFIT OF THEIR EXPERIENCE AND OPTIMUM SKILL. INTERPRETATIONS FROM ELECTRICAL OR OTHER INSTRUMENTS, WE CANNOT AND WE DO NOT GUARANTEE THE ACCURACY OR CORRECTNESS OF ANY INTERPRETATION. WE SHALL NOT BE LIABLE OR RESPONSIBLE FOR ANY LOSS OF COST, DAMAGES OR EXPENSES WHATSOEVER INCURRED OR SUSTAINED BY THE CUSTOMER RESULTING FROM ANY INTERPRETATION MADE BY ANY OF OUR EMPLOYEES.

REMARKS RUN ( 1 )  
 MAGNETIC DECLINATION 20 deg  
 WINDOW LENGTH: 8'  
 SEARCH LENGTH 12"

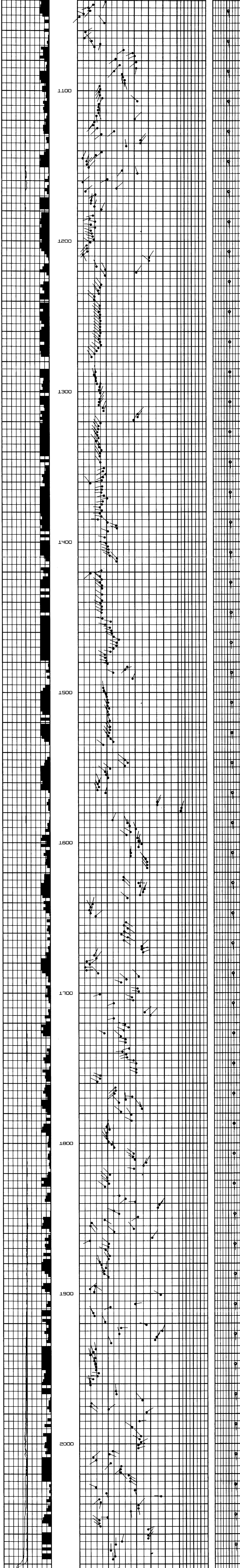
EQUIPMENT DATA

RUN TRIP	TOOL	SERIAL NO.	SERIES NO.	POSITION
1 1	COL	74178	2227XA	DE-CENT
1 1	COL	74178	2227XA	1/FARM
1 1	CN	52364	2435XA	DE-CENT
1 1	GR	60484	1309XA	DE-CENT
1 1	TEMP			
1 1	PCM	73003	3506XA	DE-CENT
1 1	C.P.	78387/52430	1016/1010	CENT

PRELIMINARY RESULTS  
 DRESSER ATLAS

OREGON NATURAL GAS DEVELOPMENT CORP.  
 LU 32C-10

6. CALIPERS 26. GRADE  
 DRIFT ANGLE  
 DIP ANGLE



RECORDED BY M. HINDS  
 WITNESSED BY MR. ROTH/HOHMS