

COMPANY REICHHOLD ENERGY CORPORATION  
 WELL COLUMBIA COUNTY 32-10  
 FIELD MIST  
 COUNTY COLUMBIA STATE OREGON  
 LOCATION 2181.42' SOUTH & 174.74' WEST  
 OF THE INTERSECTION CORNER OF 4" X 4" SECTION  
 SEC. 10 Twp. 49N Rng. 3E  
 ELEV. 803.3  
 ELEV. 819.3  
 PLUMBING DIAMETER 8.1" 8R 14.5" Above Perm. Bottom  
 LOGGING INTERVAL 2181.42' - 803.3'  
 DATE 12-23-61  
 TIME 10:00  
 DEPTH 2181.42'  
 TOOL BIT 7808  
 TOOL BIT TYPE 2794 @ 2792  
 TOOL BIT SIZE 7.713  
 BIT SIZE 7.713  
 BIT WEIGHT 2794  
 TOOL BIT TYPE 7808  
 TOOL BIT SIZE 7.713  
 BIT WEIGHT 2794  
 TOOL BIT TYPE 7808  
 TOOL BIT SIZE 7.713  
 BIT WEIGHT 2794

Service Ticket No. 057067

Change to Log Type or Additional Samples	Run No.	1	2	3	4
Zone	Tool Type	D.P.D.			
Depth	Tool Number	7808			
Type Fluid in Hole	Log Type	F.B.D.			
Correlated By	Computed By				
Remarks					

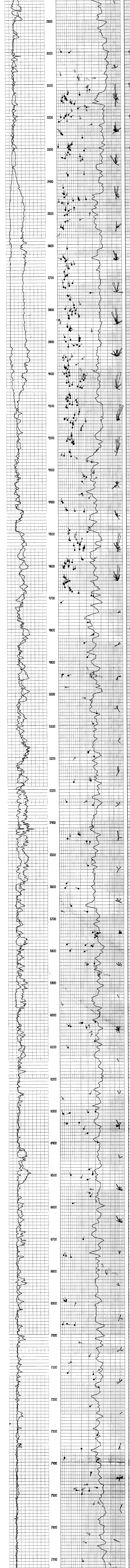
Magnetic Declination NORTH 21.5° EAST

TABLE OF CONSTANTS FOR DETERMINING VERTICAL DIFFERENCE AT VARIOUS DIP ANGLES

DIP ANGLES	CONSTANT	DIP ANGLES	CONSTANT	DIP ANGLES	CONSTANT	DIP ANGLES	CONSTANT
1	0175	11	194	21	384	35	700
2	035	12	213	22	404	40	839
3	052	13	231	23	425	45	1000
4	070	14	249	24	445	50	1192
5	088	15	268	25	466	55	1408
6	105	16	287	26	487	60	1648
7	123	17	306	27	509	65	1912
8	141	18	325	28	531	70	2144
9	158	19	344	29	554	75	2448
10	176	20	364	30	577	80	2732

Vertical difference in feet is obtained by multiplying the constant for any given dip angle by the horizontal distance in feet.  
 Example: Dip angle 10°, Horizontal distance 440 ft  
 Vertical difference = .176 x 440 = 77.44

GRAPHIC PRESENTATION



COMPANY REICHHOLD ENERGY CORPORATION  
 WELL COLUMBIA COUNTY 32-10  
 FIELD MIST  
 COUNTY COLUMBIA STATE OREGON  
 T.D. LOGGED 7804  
 T.D. DRILLER 7808  
 T.D. WELLEX 7806  
 ELEV. K.B. 819.3  
 D.F. G.L.  
 803.3