

|                                      |  |   |  |  |  |   |  |  |  |   |  |   |  |
|--------------------------------------|--|---|--|--|--|---|--|--|--|---|--|---|--|
|                                      |  | <b>ATLAS WIRELINE SERVICES</b>                                  |  | COMPANY: <b>OREGON NATURAL GAS DEVELOPMENT CORP.</b> |  | WELL: <b>103340-3</b>   |  | FIELD: <b>MI31</b>                     |  | COUNTY: <b>COLUMBIA</b>   |  | STATE: <b>OR.</b>                         |  |
| FILE NO.: _____                      |  | COMPANY: <b>OREGON NATURAL GAS DEVELOPMENT CORP.</b>            |  | WELL: <b>103340-3</b>                                |  | FIELD: <b>MI31</b>  |  | COUNTY: <b>COLUMBIA</b>                |  | STATE: <b>OR.</b>   |  | OTHER SERVICES: <b>DILE/PC/CR DIL/LOG</b> |  |
| WPI NO.: _____                       |  | LOCATION: <b>1493 94' N 4 1765 49' W FROM THE SW CORNER OF:</b> |  | LOCATION: <b>SEC 3 T12P30 R10E S11</b>               |  | LOCATION: <b>1493 94' N 4 1765 49' W FROM THE SW CORNER OF:</b> |  | LOCATION: <b>SEC 3 T12P30 R10E S11</b> |  | LOCATION: <b>1493 94' N 4 1765 49' W FROM THE SW CORNER OF:</b> |  | LOCATION: <b>SEC 3 T12P30 R10E S11</b>    |  |
| PERMIT ORIGIN: <b>Q</b>              |  | LOCATION MEASURED FROM: <b>KB</b>                               |  | ELEV. <b>1075.1</b>                                  |  | ELEVATIONS: <b>KB 1088.6' OF 1075.1'</b>                        |  | DRILLING MEASURED FROM: <b>KB</b>      |  | ELEV. <b>11.5</b>   |  | ELEVATIONS: <b>KB 1088.6' OF 1075.1'</b>  |  |
| SERVICE ORDER: <b>15565</b>          |  | DEPTH-DRILLER: <b>2891'</b>                                     |  | DEPTH-DRILLER: <b>2892'</b>                          |  | DEPTH-DRILLER: <b>2893'</b>                                     |  | DEPTH-DRILLER: <b>2894'</b>            |  | DEPTH-DRILLER: <b>2895'</b>                                     |  | DEPTH-DRILLER: <b>2896'</b>               |  |
| TOP LOGGED INTERVAL: <b>2897'</b>    |  | BOTTOM LOGGED INTERVAL: <b>2898'</b>                            |  | CASING - BRILLER: <b>8 5/8"</b>                      |  | CASING - LOGGER: <b>2897'</b>                                   |  | BIT SIZE: <b>7 7/8"</b>                |  | TYPE FLUID IN HOLE: <b>POLYMER</b>                              |  | DENSITY / VISCOSITY: <b>8.9</b>           |  |
| PH / FLUID LOSS: <b>9.0</b>          |  | SOURCE OF SAMPLE: <b>FLUID LINE</b>                             |  | BIT HEATS TEMP.: <b>.5</b>                           |  | RMC BIT HEATS TEMP.: <b>.4</b>                                  |  | TEMP.: <b>.7</b>                       |  | SOURCE OF RMC / RMC: <b>H</b>                                   |  | RMC AT BIT: <b>.23</b>                    |  |
| TIME SINCE CIRCULATION: <b>5 HRS</b> |  | MAX. REC. TEMP. DEG. F: <b>106</b>                              |  | EQUIP. NO. / LOG.: <b>6799</b>                       |  | HR: <b>ROT/HT/HOMS</b>  |  | HR: <b>ROT/HT/HOMS</b>                 |  | HR: <b>ROT/HT/HOMS</b>  |  | HR: <b>ROT/HT/HOMS</b>                    |  |

FOLD HERE

REMARKS RUN ( 2 )

| RUN | TRIP | TOOL | SERIAL NO. | SERIES NO. | POSITION |
|-----|------|------|------------|------------|----------|
| 2   | 2    | CDL  | 57797      | 2227XA     | DE-CENT  |
| 2   | 2    | CDL  | 57797      | 2227XA     | DE-CENT  |
| 2   | 2    | CN   | 52354      | 2435XA     | DE-CENT  |
| 2   | 2    | CR   | 50484      | 1309XA     | DE-CENT  |
| 2   | 2    | TEMP |            |            |          |
| 2   | 2    | PCM  | 73003      | 3506XA     | DE-CENT  |

PARAMETERS

| NAME       | DEPTH INTERVAL | VALUE      | UNITS |
|------------|----------------|------------|-------|
| A          | 2804 TO 2853   | 0.000      |       |
| CAL COR    | 2804 TO 2853   | CAL        |       |
| CASING CNC | 2804 TO 2853   | NOT ACTIVE |       |
| CHISM CN   | 2804 TO 2853   | NOT ACTIVE |       |
| CHISM DEN  | 2804 TO 2853   | NOT ACTIVE |       |
| M          | 2804 TO 2853   | 0.000      |       |
| MATRIX     | 2804 TO 2853   | SANDSTONE  |       |
| O.D.       | 2804 TO 2853   | 0.000      | INCH  |
| PHO F      | 2804 TO 2853   | 0.250      | G/CC  |
| PHO M      | 2804 TO 2853   | 2.850      | G/CC  |
| SALINITY   | 2804 TO 2853   | 0.000      | PPK   |

DISPLAY SCALE CHANGES

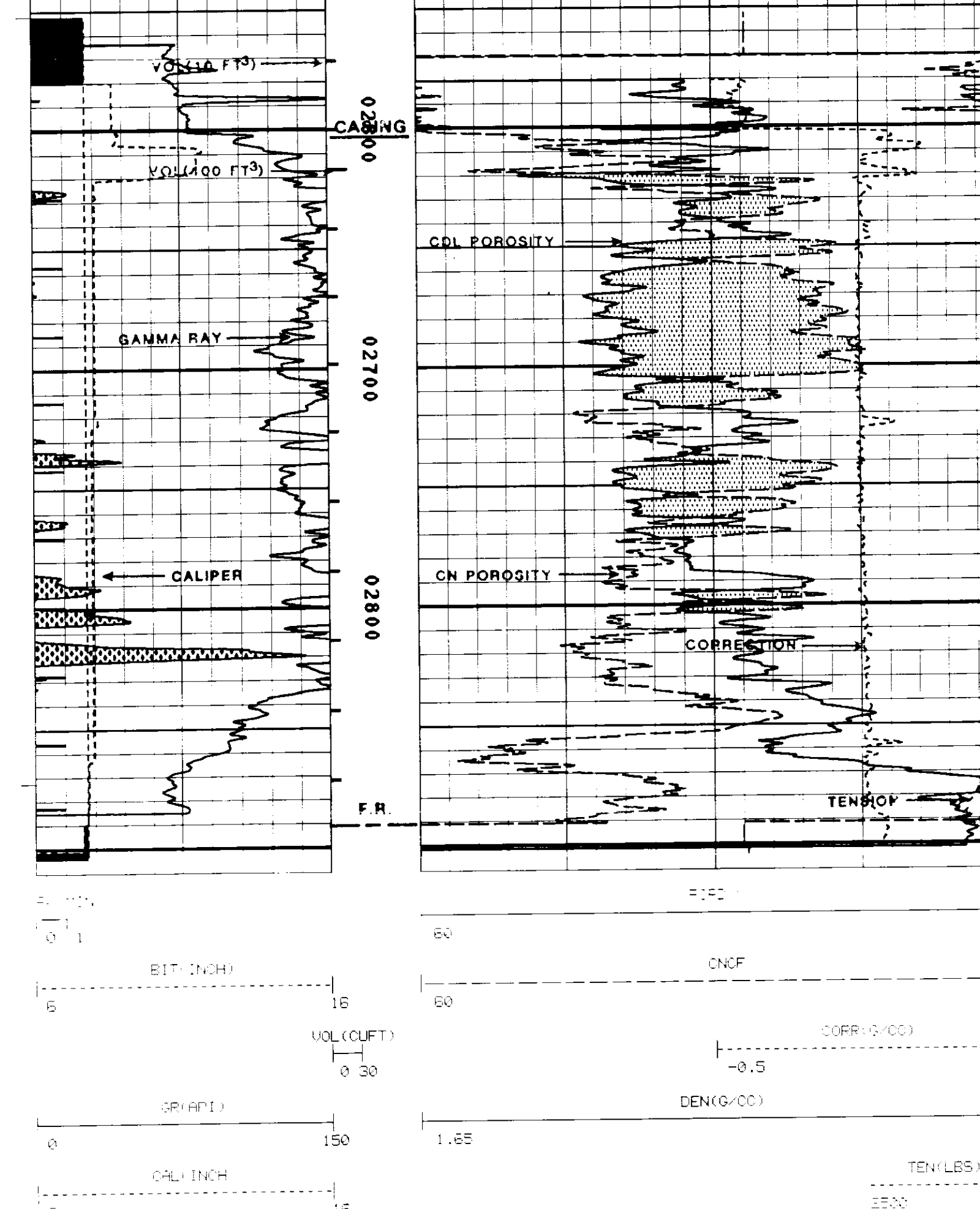
\*\*\* NONE \*\*\*

COMPANY: OREGON NATURAL GAS DEVELOPMENT CORP. RUN: 2

WELL NAME: 103340-3 TRIP: 2

SERVICE: 102015 FILE: 1 DATE: 12-03-90 TIME: 15:48:57

REVISION: FS10256 REV:0002 VER:2.0 MODE: RECOMPUTE FLA-EAR



FILE: 2

**REPEAT SECTION**

FILE: 1

PARAMETERS

| NAME       | DEPTH INTERVAL | VALUE      | UNITS |
|------------|----------------|------------|-------|
| A          | 2809 TO 2864   | 0.000      |       |
| CAL COR    | 2809 TO 2864   | CAL        |       |
| CASING CNC | 2809 TO 2864   | NOT ACTIVE |       |
| CHISM CN   | 2809 TO 2864   | NOT ACTIVE |       |
| CHISM DEN  | 2809 TO 2864   | NOT ACTIVE |       |
| M          | 2809 TO 2864   | 0.000      |       |
| MATRIX     | 2809 TO 2864   | SANDSTONE  |       |
| O.D.       | 2809 TO 2864   | 0.000      | INCH  |
| PHO F      | 2809 TO 2864   | 0.250      | G/CC  |
| PHO M      | 2809 TO 2864   | 2.850      | G/CC  |
| SALINITY   | 2809 TO 2864   | 0.000      | PPK   |

DISPLAY SCALE CHANGES

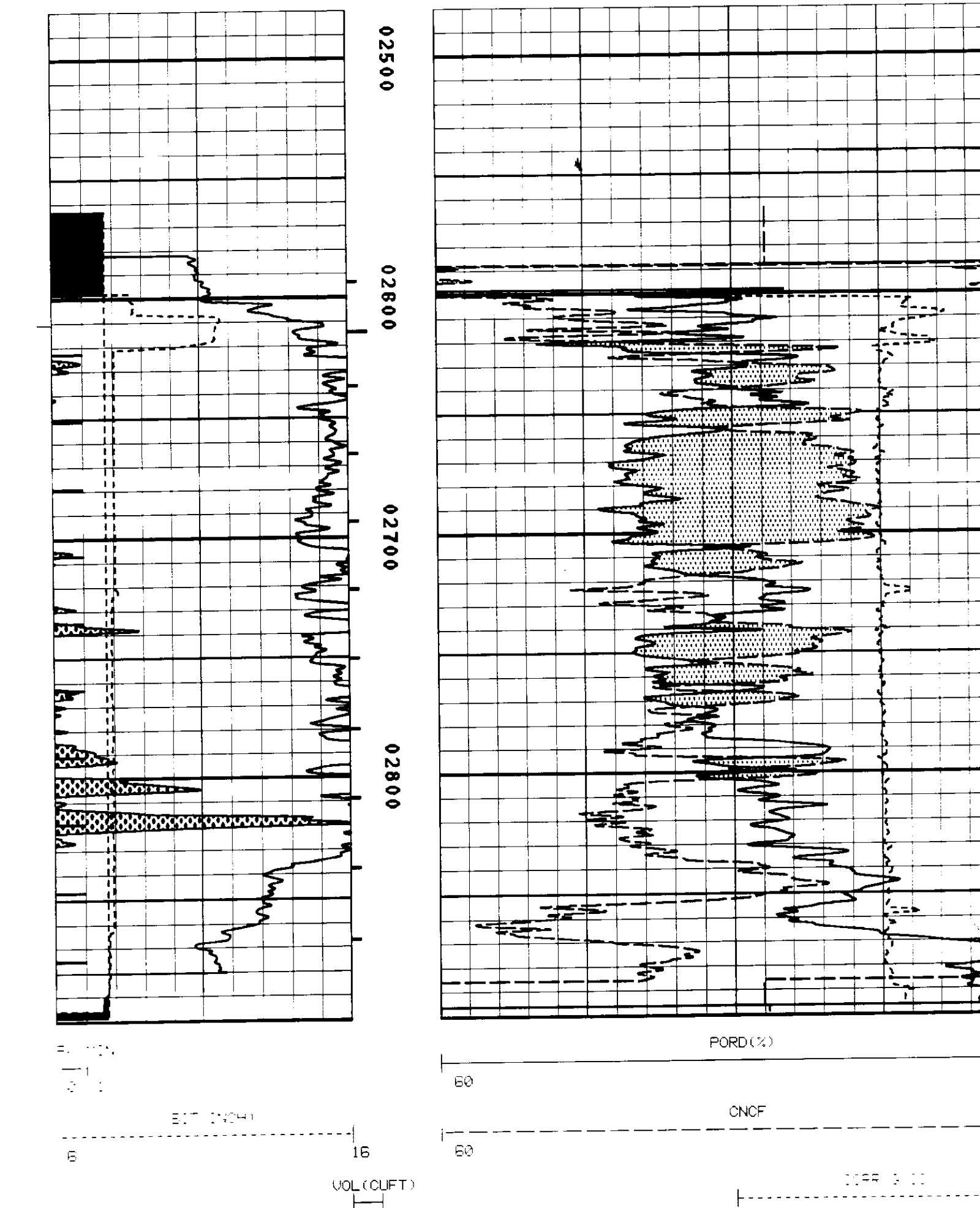
\*\*\* NONE \*\*\*

COMPANY: OREGON NATURAL GAS DEVELOPMENT CORP. RUN: 2

WELL NAME: 103340-3 TRIP: 2

SERVICE: 102015 FILE: 1 DATE: 12-03-90 TIME: 15:24:30

REVISION: FS10256 REV:0002 VER:2.0 MODE: RECOMPUTE FLA-EAR



FILE: 1