

ATLAS WIRELINE SERVICES

DIPLOG

Western Atlas International
 541-100

FILE NO. _____
 COMPANY **NORTHWEST NATURAL GAS**
 OREGON NATURAL GAS DEVELOPMENT CORP.

WELL **WJ393-3**
 FIELD **MIST**
 COUNTY **COLUMBIA** STATE **OR.**

LOCATION: **1465 94' N & 1185 42' W**
 FROM THE SW CORNER OF:
 SEC 3 T14P3N R3E38N

OTHER SERVICES
 DILF/REG/GR
 COL/CN/GR

PERMANENT GRAIN **0**
 LOGGING MEASURED FROM **KB**
 DRILLING MEASURED FROM **KB**
 ELEVATIONS
 ELEV. **2075.1** OF **1075.1'**

DATE **12-03-90**
 RUN **2**
 SERVICE ORDER **655965**
 DEPTH-ORDER **28912**

TOP LOGGED INTERVAL **2890'**
 BOTTOM LOGGED INTERVAL **2896'**
 USING - DRILLER **B 578'** **B 2403'**

BIT SIZE	8 1/2"
TYPE OF BIT	PC
THEFT INDICATOR	ON
DETAILED LOSS	9.0
SOURCE OF SAMPLE	FLUID LINE
SPR AT HESG. TEMP.	5
SPR AT HESG. TEMP.	4
SPR AT HESG. TEMP.	1.7
SOURCE OF SPR / RMC	H
SPR AT HESG. TEMP.	2.3
TIME SINCE CIRCULATION	5 HRS
MAX. REC. TEMP. DEG. F	106 DEG. F
EQUIP. NO. / LOC.	6394 / BMS
RECORDED BY	M. HINDS
WITNESSED BY	MR. ROY/HINDS

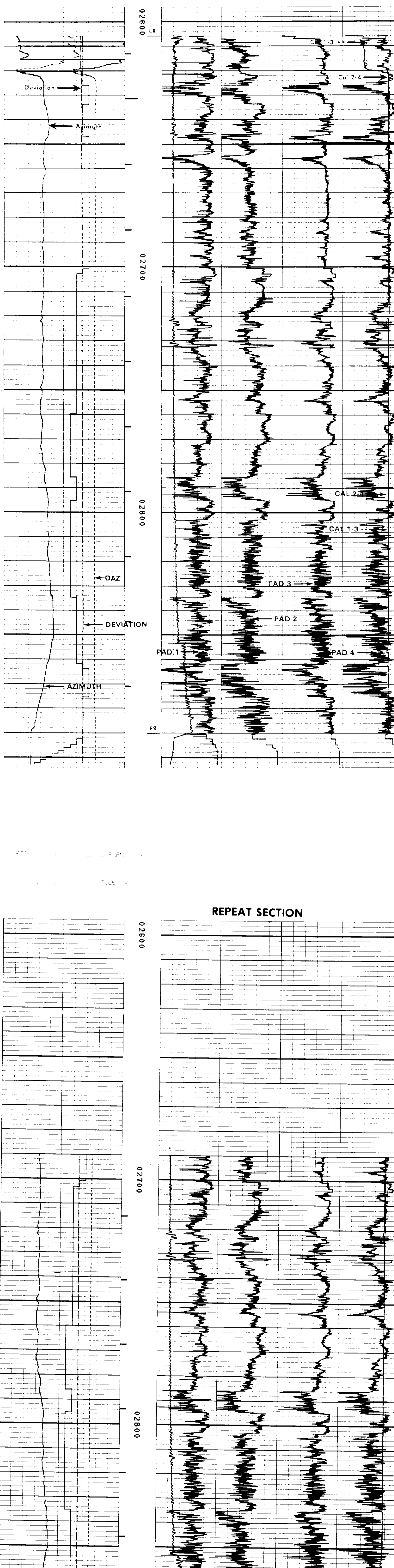
IN MAKING INTERPRETATIONS OF LOGS OUR EMPLOYEES WILL GIVE CUSTOMER THE BENEFIT OF THEIR BEST JUDGMENT, BUT SINCE ALL INTERPRETATIONS ARE OPINIONS BASED ON INFORMATION FROM ELECTRICAL OR OTHER MEASUREMENTS, WE CANNOT AND WE DO NOT GUARANTEE THE ACCURACY OR CORRECTNESS OF ANY INTERPRETATION. WE SHALL NOT BE LIABLE OR RESPONSIBLE FOR ANY LOSS, COST, DAMAGES, OR EXPENSES WHATSOEVER INCURRED OR SUSTAINED BY THE CUSTOMER RESULTING FROM ANY INTERPRETATION MADE BY ANY OF OUR EMPLOYEES.

FOLD HERE

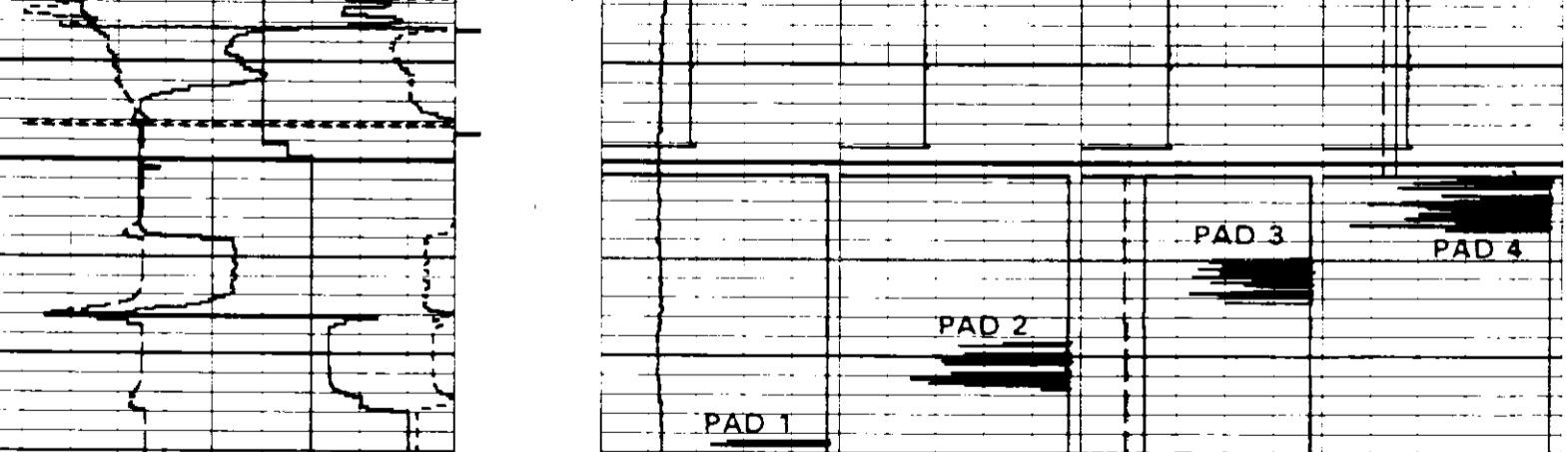
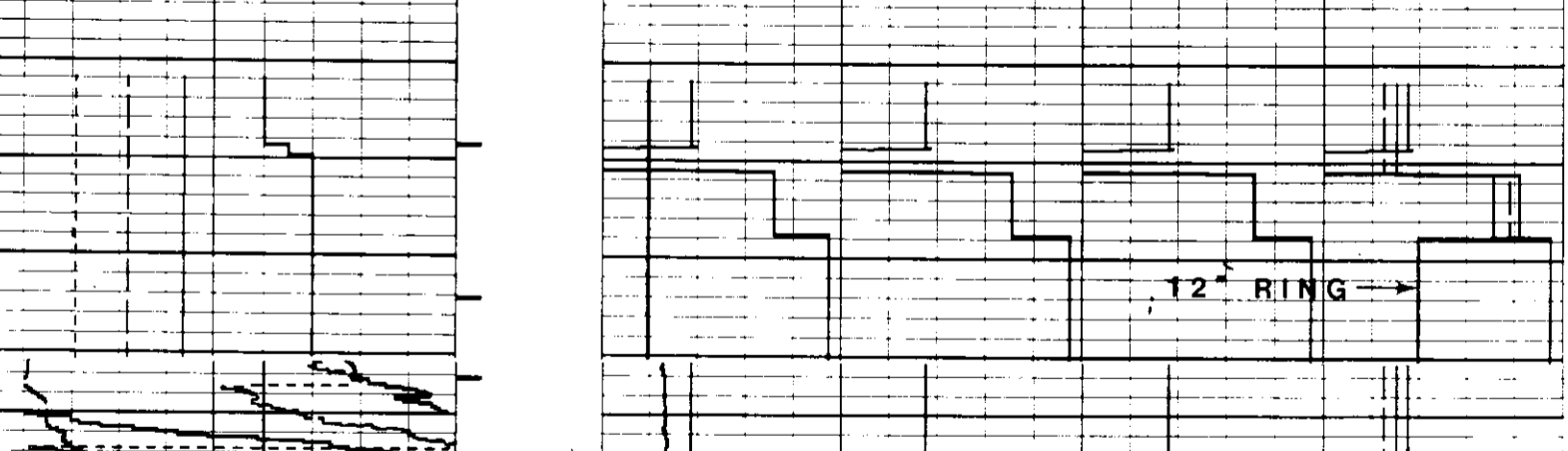
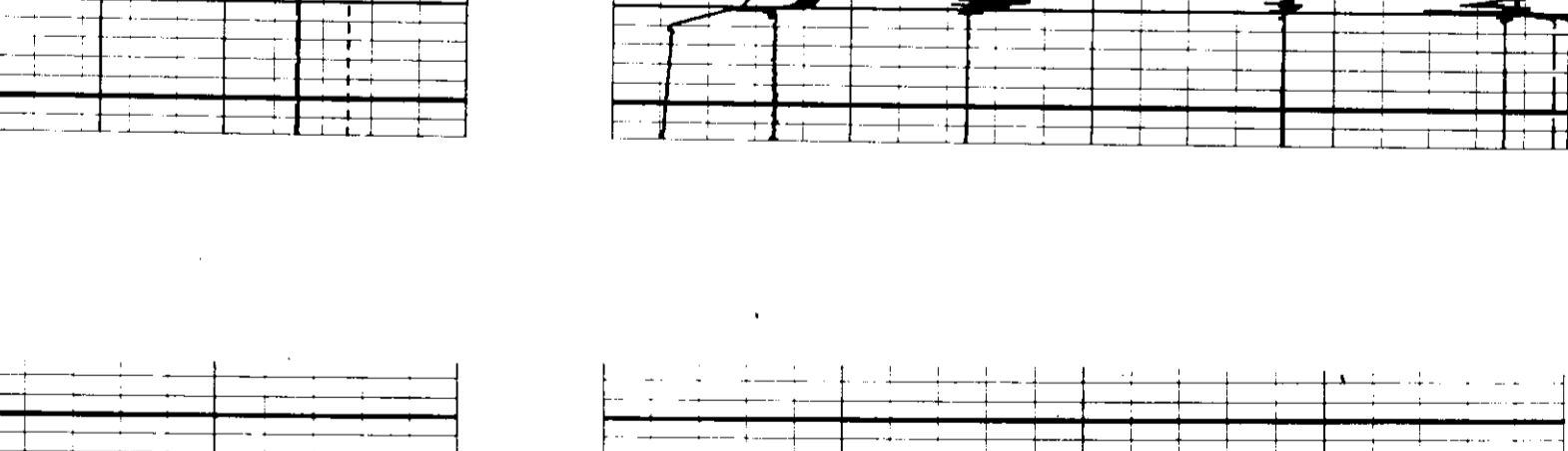
REMARKS RUN (2)
 AZIMUTH...0 to 360 deg
 DEVIATION...0 to 18 deg
 DAZ...0 to 360 deg
 CALIPER 26" to 6"

EQUIPMENT DATA

RUN	TRIP	TOOL	SERIAL NO.	SERIES NO.	POSITION
2	2	COL	57797	2227XA	DE-CENT
2	2	CAL	57797	2227XA	1/ARM
2	2	CN	52364	2435XA	DE-CENT
2	2	GR	60464	1309XA	DE-CENT
2	2	TEMP			
2	2	PCM	73003	3506XA	DE-CENT
2	2	DIP	52430/78403	1010/1016	CENT.



REPEAT SECTION



CALIBRATION AFTER LOG

