

4-ARM Caliper Log

Western Atlas
International
Services Wireline

FILE NO. _____		COMPANY: OREGON NATURAL GAS CORPORATION	
WELL NO. IW 42C-10		WELL: IW 42C-10	
FIELD: MIST		STATE: OREGON	
COUNTY: COCLUMMA		Other Services: NONE	
LOCATION: 437 W. 3291 N. FROM THE E/4 CORNER OF:			
SEC: 10	TWP: 6N	RGE: 5W	Other Services: NONE
Permanent Datum: 11		Elev.: 801.38'	
Log Measured from: K13		Elev.: 811.38'	
Drilling Measured from: K13		Elev.: 801.38'	
Date: 8-2-88	Run No.: 139032	Service Order: 21891	Depth - Driller: 2188'
Depth - Logger: 2188'	Bottom Logged Interval: 2188'	Top Logged Interval: 2178'	Casing - Driller: 8 5/8" @ 2170'
Casing - Logger: 2170'	Bit Size: 1 1/2"	Type Fluid in Hole: K-1, H-1, C-1	Design and Viscosity: K-1, H-1, C-1
Spillage and Fluid Loss: 2.0	Spillage and Fluid Loss: 14.8cc	Source of Sample: @	Temp. @ Meas. Temp.: @
Temp. @ Meas. Temp.: @	Temp. @ Meas. Temp.: @	Temp. @ Meas. Temp.: @	Temp. @ Meas. Temp.: @
Temp. @ Meas. Temp.: @	Temp. @ Meas. Temp.: @	Temp. @ Meas. Temp.: @	Temp. @ Meas. Temp.: @
Time Since Circ.: @	Time Since Circ.: @	Time Since Circ.: @	Time Since Circ.: @
Max. Rec. Temp. Day F.: @	Max. Rec. Temp. Day F.: @	Max. Rec. Temp. Day F.: @	Max. Rec. Temp. Day F.: @
Equip. No. and Location: B. WELCH	Equip. No. and Location: SAC.	Equip. No. and Location: SAC.	Equip. No. and Location: SAC.
Recorded By: M. THOMAS	Recorded By: M. THOMAS	Recorded By: M. THOMAS	Recorded By: M. THOMAS
Witnessed By: _____	Witnessed By: _____	Witnessed By: _____	Witnessed By: _____

Western Atlas
International
Services Wireline

WIRELINE SERVICES

IN MAKING INTERPRETATIONS OF LOGS, OUR EMPLOYEES WILL GIVE CUSTOMER THE BENEFIT OF THEIR BEST JUDGMENT, BUT SINCE ALL INTERPRETATIONS ARE OPINIONS BASED ON INFORMATION FROM ELECTRICAL OR OTHER INSTRUMENTS, WE CANNOT, AND WE DO NOT GUARANTEE THE ACCURACY OR CORRECTNESS OF ANY INTERPRETATION. WE SHALL NOT BE LIABLE OR RESPONSIBLE FOR ANY LOSS, COST, DAMAGES, OR EXPENSES WHATSOEVER INCURRED OR SUSTAINED BY THE CUSTOMER RESULTING FROM ANY INTERPRETATION MADE BY ANY OF OUR EMPLOYEES.

REMARKS RUN (1)
BHV COMPUTED FOR 5.5" CSG

RUN	TRIP	TOOL	SERIAL NO.	SERIES NO.	POSITION
1	1	4CAL	32422	11905	CENT
1	1	GR			

*** GR NOT CALIBRATED ***

CURVE DELAYS

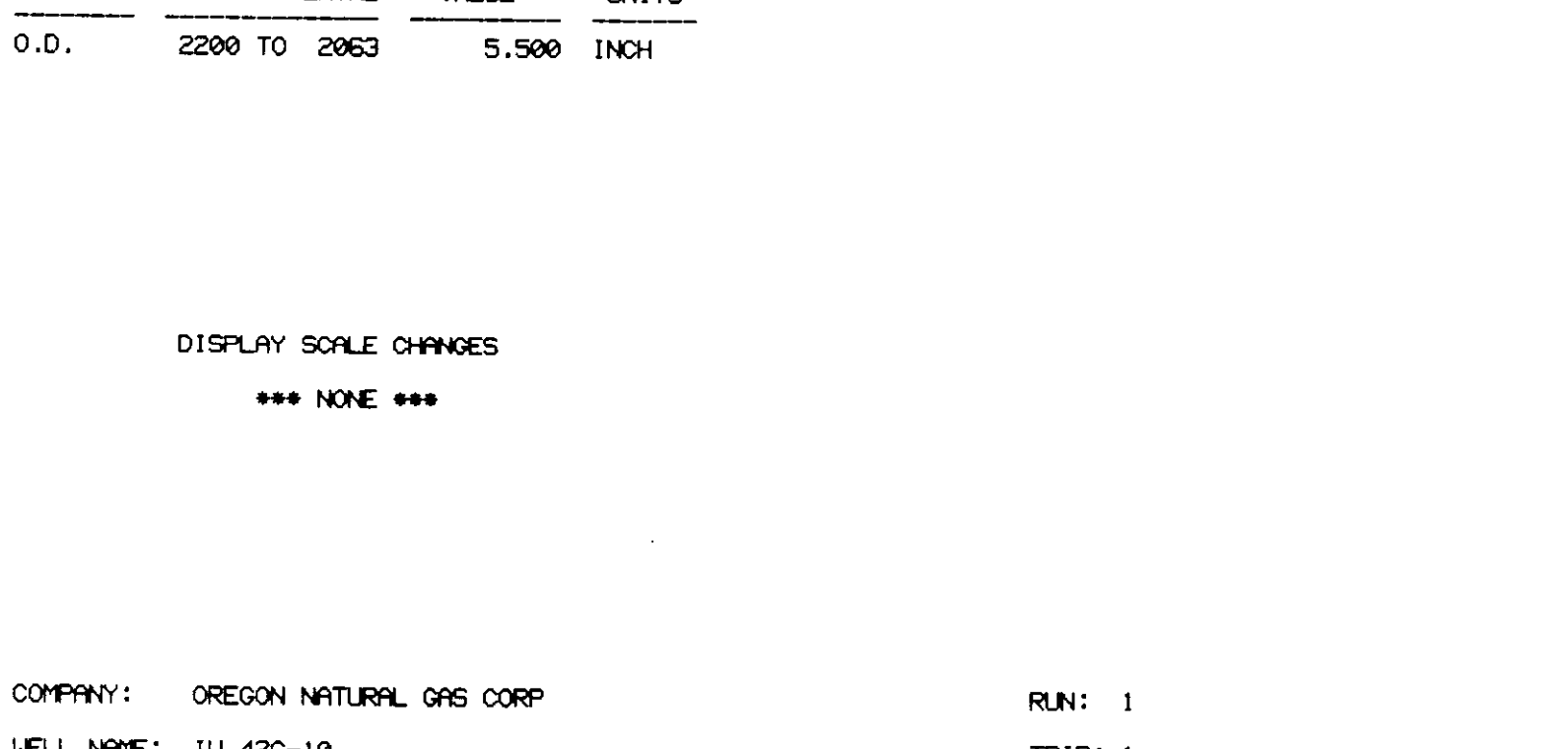
CURVE	DELAY	UNITS
C13	0,9	FT, IN
C24	0	FT, IN
GR	10,0	FT, IN

PARAMETERS

NAME	DEPTH INTERVAL	VALUE	UNITS
O.D.	2200 TO 2063	5.500	INCH

DISPLAY SCALE CHANGES
*** NONE ***

COMPANY: OREGON NATURAL GAS CORP
WELL NAME: IW 42C-10
SERVICE: KC202A FILE: 3 DATE: 08/02/88 TIME: 22:10:16
REVISION: FSYVAL REV 0508 VER 2 MODE: RECORD



CURVE DELAYS

CURVE	DELAY	UNITS
C13	0,9	FT, IN
C24	0	FT, IN
GR	10,0	FT, IN

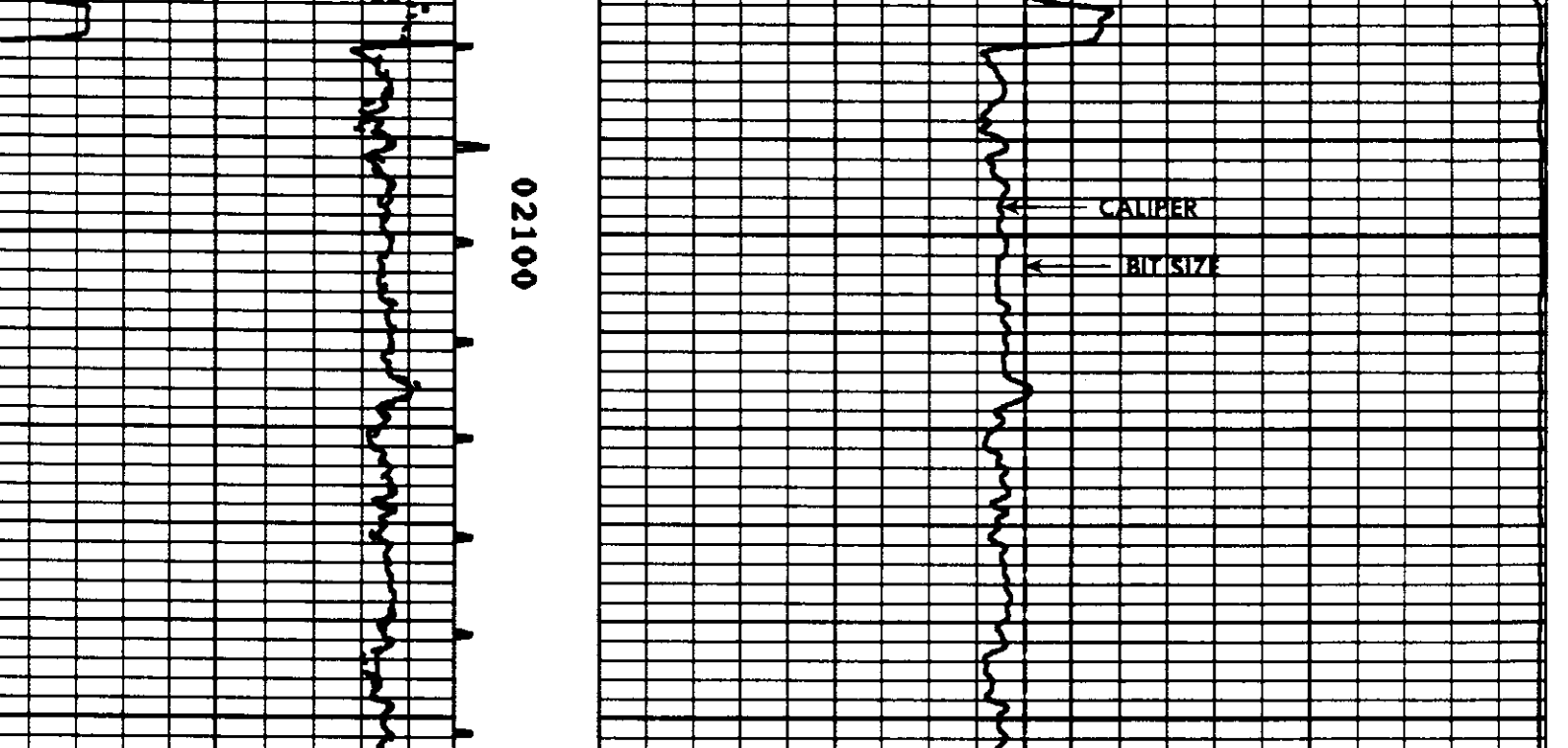
PARAMETERS

NAME	DEPTH INTERVAL	VALUE	UNITS
O.D.	2193 TO 2049	5.500	INCH

DISPLAY SCALE CHANGES
*** NONE ***

COMPANY: OREGON NATURAL GAS CORP
WELL NAME: IW 42C-10
SERVICE: KC202A FILE: 2 DATE: 08/02/88 TIME: 22:04:30
REVISION: FSYVAL REV 0508 VER 2 MODE: RECORD

REPEAT SECTION



CURVE DELAYS

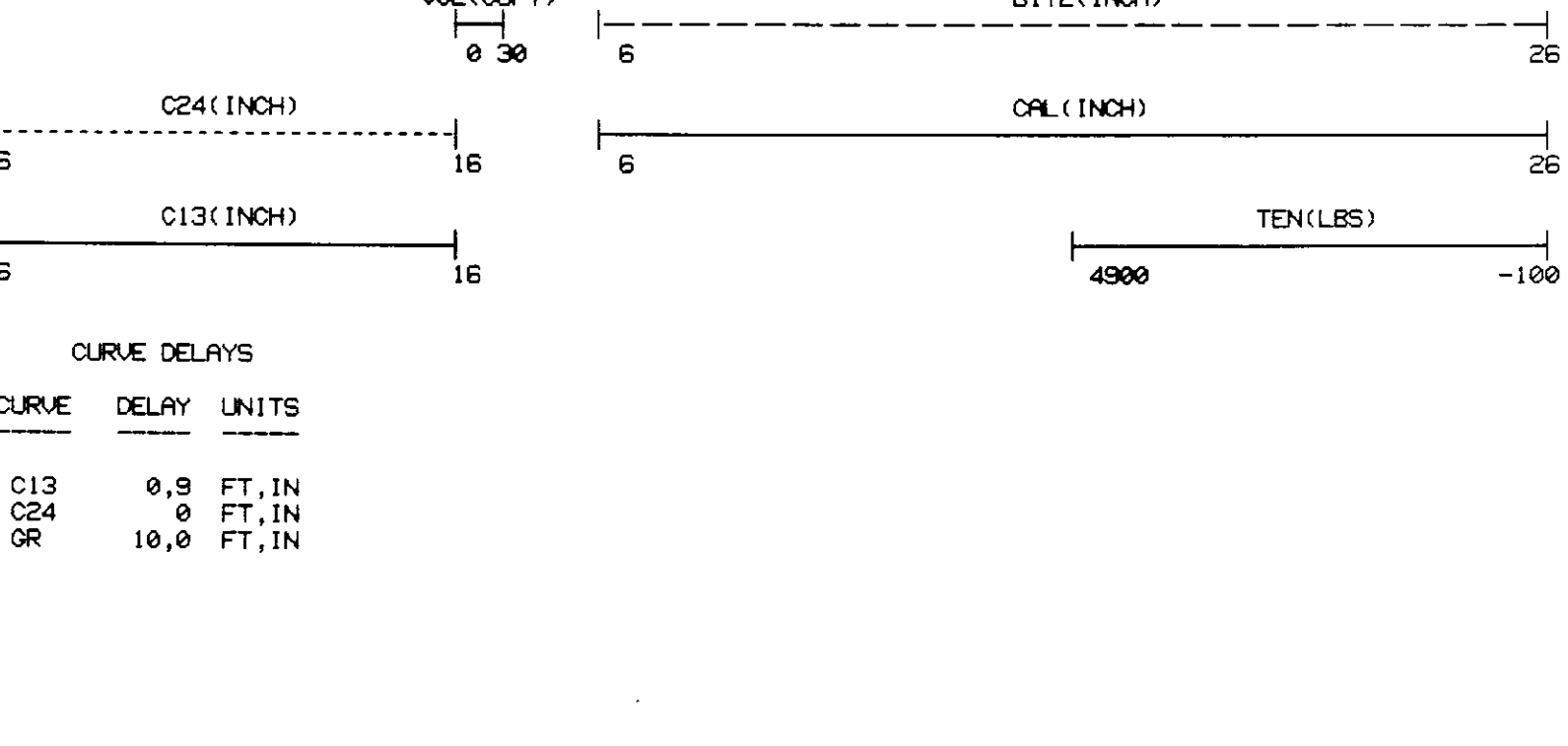
CURVE	DELAY	UNITS
C13	0,9	FT, IN
C24	0	FT, IN
GR	10,0	FT, IN

PARAMETERS

NAME	DEPTH INTERVAL	VALUE	UNITS
O.D.	2193 TO 2049	5.500	INCH

DISPLAY SCALE CHANGES
*** NONE ***

COMPANY: OREGON NATURAL GAS CORP
WELL NAME: IW 42C-10
SERVICE: KC202A FILE: 2 DATE: 08/02/88 TIME: 22:04:30
REVISION: FSYVAL REV 0508 VER 2 MODE: RECORD



CURVE DELAYS

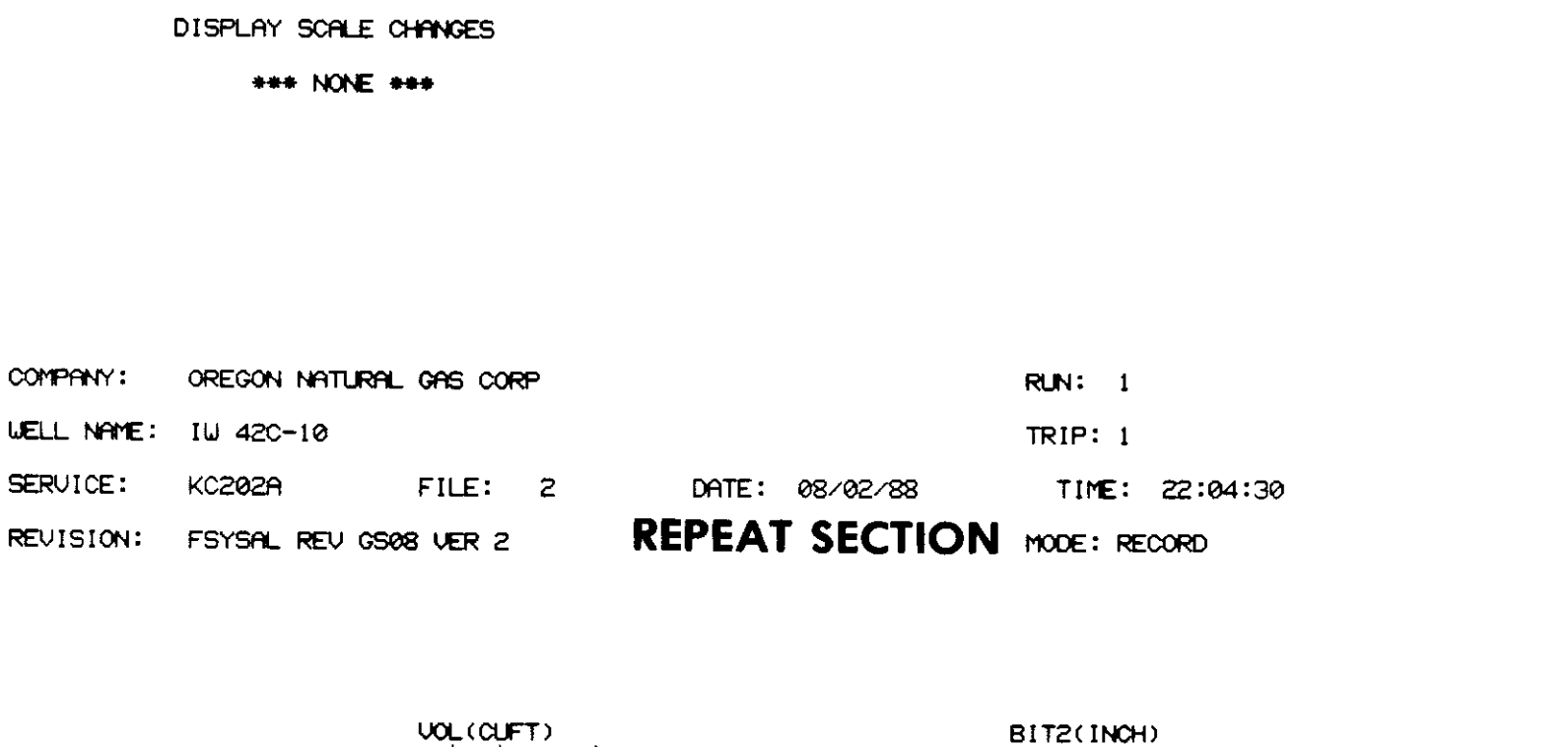
CURVE	DELAY	UNITS
C13	0,9	FT, IN
C24	0	FT, IN
GR	10,0	FT, IN

PARAMETERS

NAME	DEPTH INTERVAL	VALUE	UNITS
O.D.	2193 TO 2049	5.500	INCH

DISPLAY SCALE CHANGES
*** NONE ***

COMPANY: OREGON NATURAL GAS CORP
WELL NAME: IW 42C-10
SERVICE: KC202A FILE: 2 DATE: 08/02/88 TIME: 22:04:30
REVISION: FSYVAL REV 0508 VER 2 MODE: RECORD



CURVE DELAYS

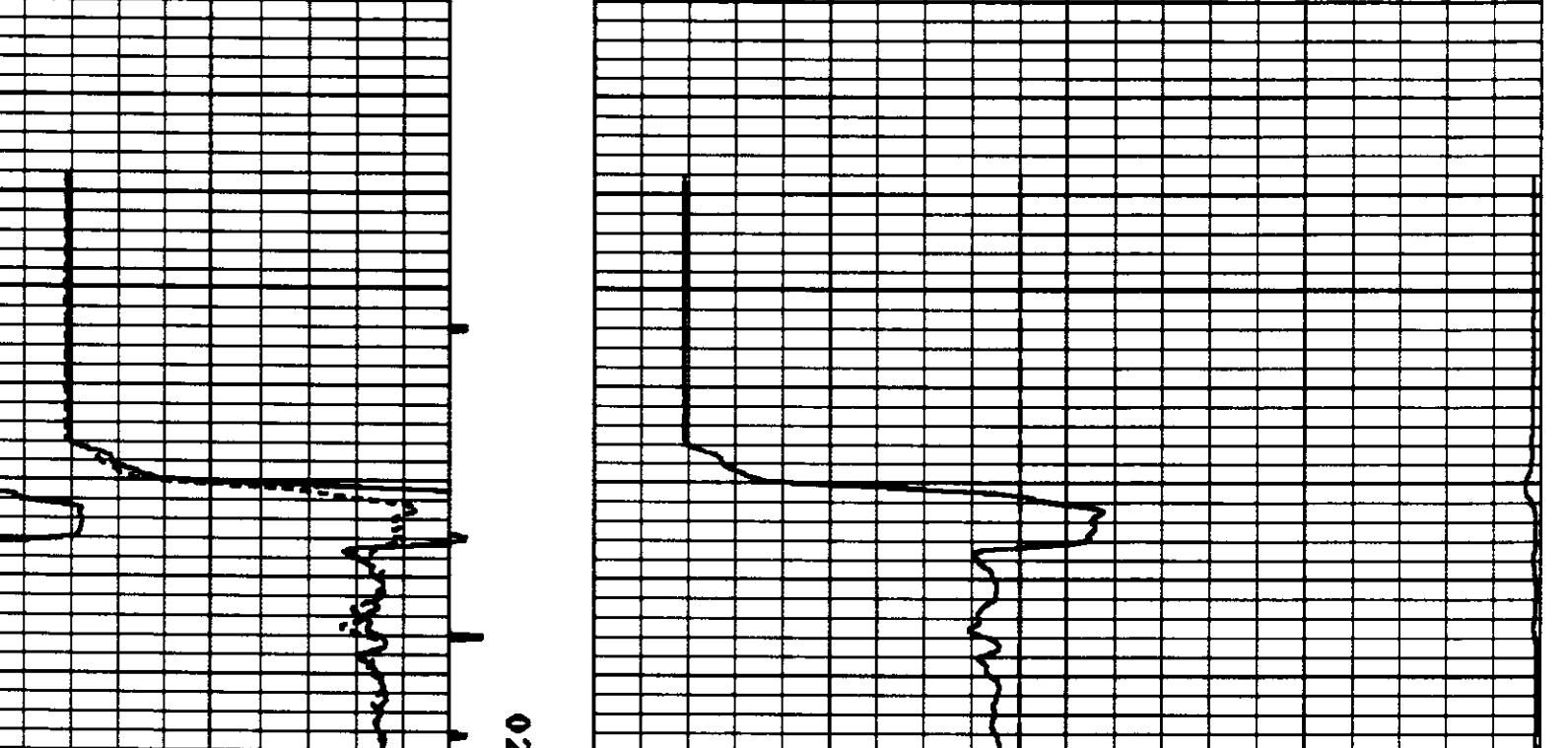
CURVE	DELAY	UNITS
C13	0,9	FT, IN
C24	0	FT, IN
GR	10,0	FT, IN

PARAMETERS

NAME	DEPTH INTERVAL	VALUE	UNITS
O.D.	2193 TO 2049	5.500	INCH

DISPLAY SCALE CHANGES
*** NONE ***

COMPANY: OREGON NATURAL GAS CORP
WELL NAME: IW 42C-10
SERVICE: KC202A FILE: 2 DATE: 08/02/88 TIME: 22:04:30
REVISION: FSYVAL REV 0508 VER 2 MODE: RECORD



CURVE DELAYS

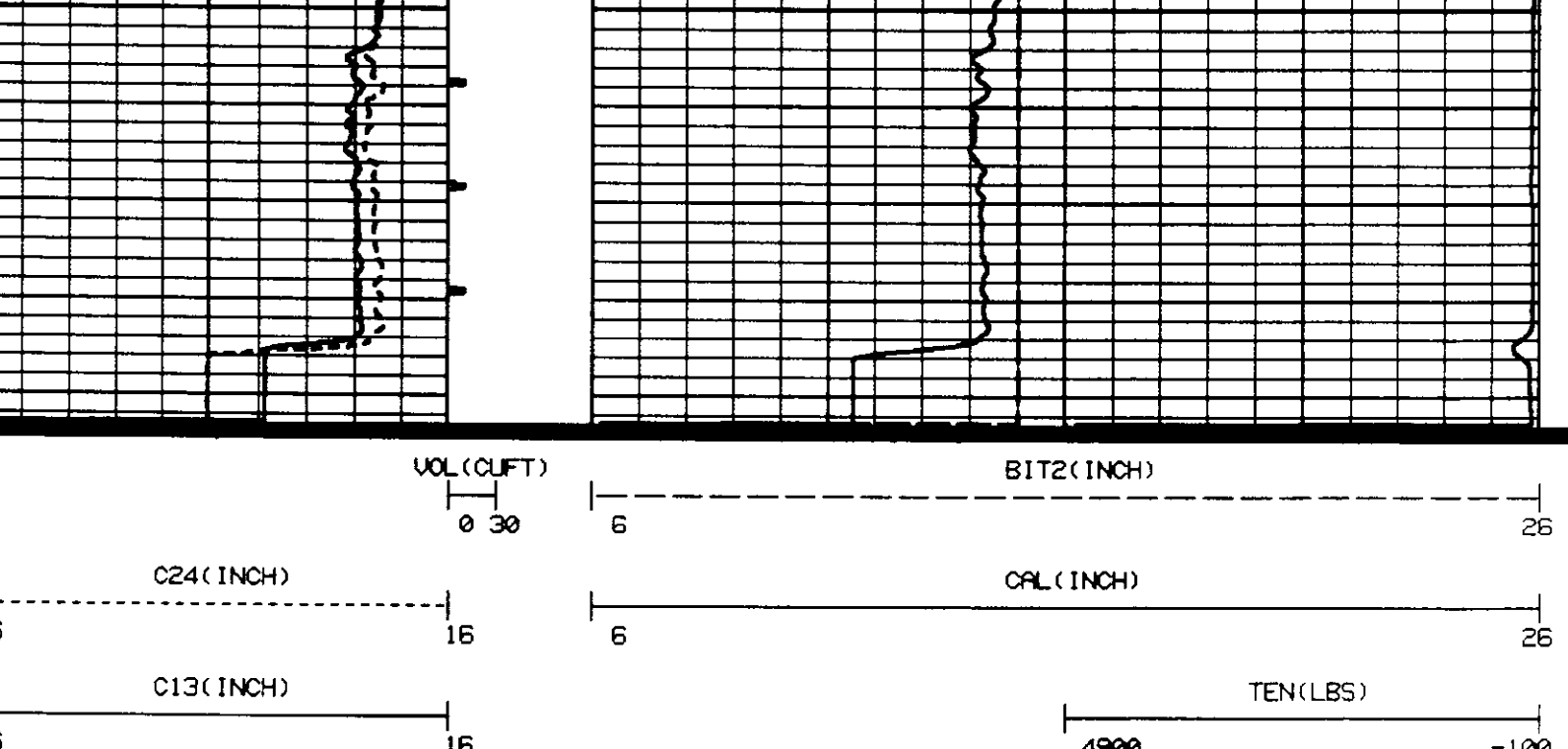
CURVE	DELAY	UNITS
C13	0,9	FT, IN
C24	0	FT, IN
GR	10,0	FT, IN

PARAMETERS

NAME	DEPTH INTERVAL	VALUE	UNITS
O.D.	2193 TO 2049	5.500	INCH

DISPLAY SCALE CHANGES
*** NONE ***

COMPANY: OREGON NATURAL GAS CORP
WELL NAME: IW 42C-10
SERVICE: KC202A FILE: 2 DATE: 08/02/88 TIME: 22:04:30
REVISION: FSYVAL REV 0508 VER 2 MODE: RECORD



CURVE DELAYS

CURVE	DELAY	UNITS
C13	0,9	FT, IN
C24	0	FT, IN
GR	10,0	FT, IN

PARAMETERS

NAME	DEPTH INTERVAL	VALUE	UNITS
O.D.	2193 TO 2049	5.500	INCH

DISPLAY SCALE CHANGES
*** NONE ***

COMPANY: OREGON NATURAL GAS CORP
WELL NAME: IW 42C-10
SERVICE: KC202A FILE: 2 DATE: 08/02/88 TIME: 22:04:30
REVISION: FSYVAL REV 0508 VER 2 MODE: RECORD

LOG NAME 4CAL ASSET NO. 32422 UNIT NO. HL 6406		CALIBRATION ENTERED ON 08/02/88 AT 21:08:56	
CURVE	MILLIVOLTS	SCALING FACTORS	ENGINEERING VALUES
	LOW HIGH	ADD. MULT.	LOW HIGH
DATE 08/02/88	CALIBRATION		TIME 21:08:56
C13	1089.0 3015.8	0.914 0.0114	6.000 15.000 INCH
C24	1293.4 3014.9	-0.762 0.0128	6.000 15.000 INCH
PRIMARY VERIFICATION NOT DONE			
DATE 08/02/88	BEFORE LOG VERIFICATION		TIME 21:53:45
C13	E 1495.5	0.914 0.0114	E 7.889 INCH
C24	E 1651.6	-0.762 0.0128	E 7.873 INCH
DATE 08/02/88	AFTER LOG VERIFICATION		TIME 22:14:53
C13	E 1511.8	0.914 0.0114	E 7.975 INCH
C24	E 1653.3	-0.762 0.0128	E 7.882 INCH

 • CALIBRATION/VERIFICATION SUMMARIES •
 • DATE 08/02/88 TIME 22:16:44 •
 • RUN 1 TRIP 1 •
